

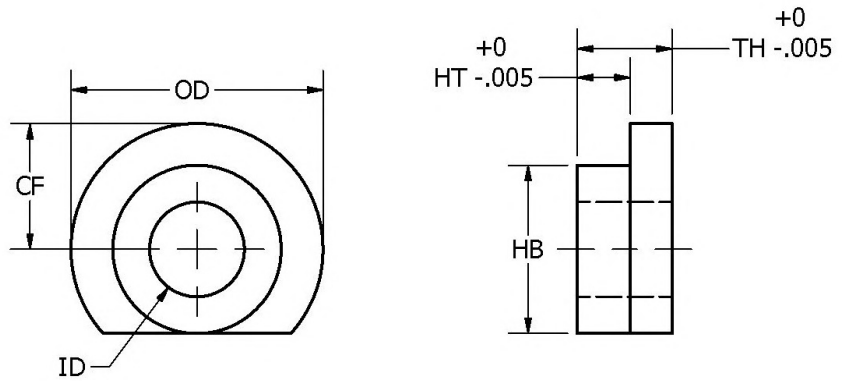
CM2

COMPONENTS

CM2

Precision Motor Clamps

Inch and Metric versions



Tolerances

.XX ±.016

.XXX ±.005

Suffix	Material	Finish
A	Aluminum 2024-T351	Chromic Acid Anodize
S	Stainless Steel 303	Clear Passivate
F	Stainless Steel 416	Clear Passivate

Part Number	Suffix	HT	TH	OD	CF	HB	ID
CM2-1209.055	S	.055	.095	.250	.125	.187	.094
CM2-1212.086	S	.086	.125	.250	.125	.187	.094
CM2-1810.052	A S F	.052	.100	.375	.187	.250	.128
CM2-1811.063	S F	.063	.113	.375	.187	.250	.128
CM2-1813.081	A S F	.081	.131	.375	.187	.250	.128
CM2-1816.109	A S F	.109	.160	.375	.187	.250	.128
CM2-1816.112	S F	.112	.162	.375	.187	.250	.128
CM2-1819.143	S F	.143	.193	.375	.187	.250	.128
CM2-1826.213	S F	.213	.263	.375	.187	.250	.128
CM2-1828.238	A S F	.238	.288	.375	.187	.250	.128
CM2-2010.052	S	.052	.106	.404	.202	.280	.152
CM2-2015.070	S	.070	.152	.404	.202	.280	.152
CM2-2015.085	S	.085	.152	.404	.202	.280	.152