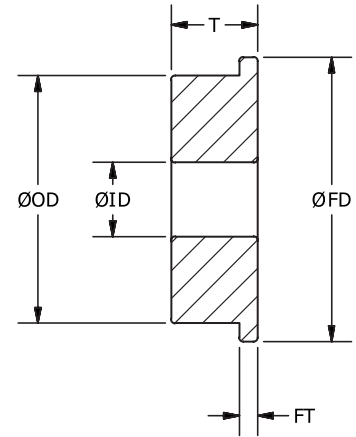
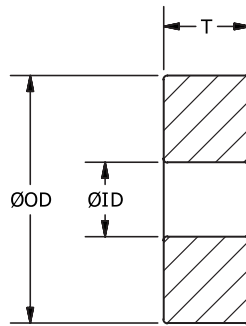


PB

# COMPONENTS

PB

Sintered Bronze per Mil-B-5687a Type 1  
Vacuum Impregnated Oil per Mil-L 6085



Part Number		Shaft Size	Bore I.D.	O.D.	Thickness T	Flange Diameter FD	Flange Thickness FT
Plain	Flanged						
PB-042	PB-642	3/64	0.0469	0.1563	0.094	0.203	0.031
PB-052	PB-653	1.4mm	0.0550	0.1876	0.109	0.234	0.031
PB-061	PB-661	1/16	0.0627	0.2501	0.094	0.296	0.031
PB-071	PB-671	5/64	0.0781	0.2500	0.094	0.296	0.023
PB-072	PB-673	5/64	0.0783	0.2501	0.094	0.296	0.031
PB-091	PB-691	3/32	0.0937	0.1875	0.062	0.234	0.018
PB-092	PB-692	3/32	0.0937	0.3125	0.109	0.359	0.023
PB-094	PB-696	3/32	0.0939	0.3126	0.109	0.359	0.031
PB-121	PB-721	1/8	0.1250	0.2500	0.094	0.296	0.023
PB-122	PB-722	1/8	0.1250	0.3125	0.109	0.359	0.023
PB-124	PB-724	1/8	0.1250	0.3750	0.156	0.440	0.030
PB-125	---	1/8	0.1252	0.2188	0.094	---	---
PB-130	PB-731	1/8	0.1252	0.3751	0.141	0.422	0.031
PB-130A	---	1/8	0.1252	0.3125	0.141	---	---
PB-152	PB-754	5/32	0.1564	0.3126	0.125	0.359	0.036
PB-181	PB-781	3/16	0.1875	0.3125	0.109	0.359	0.023
PB-182	PB-783	3/16	0.1875	0.3750	0.125	0.422	0.031
PB-183	---	3/16	0.1875	0.5000	0.156	---	---
PB-184	PB-784	3/16	0.1875	0.5000	0.196	0.565	0.042
PB-184A	---	3/16	0.1875	0.5000	0.180	---	---
PB-187	PB-789	3/16	0.1877	0.5001	0.156	0.565	0.042
PB-251	PB-851	1/4	0.2500	0.3750	0.125	0.422	0.023
PB-253	PB-853	1/4	0.2500	0.5000	0.187	0.547	0.045
PB-254	PB-854	1/4	0.2500	0.6250	0.196	0.690	0.042
PB-257	PB-859	1/4	0.2502	0.6251	0.196	0.690	0.042
PB-257A	---	1/4	0.2502	0.6251	0.180	---	---
PB-311	---	5/16	0.3127	0.5001	0.156	---	---
PB-312	PB-911	5/16	0.3127	0.6876	0.250	0.750	0.042
PB-371	PB-971	3/8	0.3752	0.8751	0.281	0.969	0.062
PB-390	PB-990	1/2	0.5002	1.1251	0.312	1.250	0.062

**ondrives.us**

☎ 1-888-260-7466  
📄 516-771-6444

💻 sales@ondrivesus.com  
🌐 www.ondrivesus.com