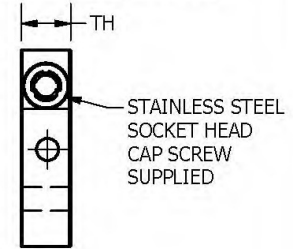
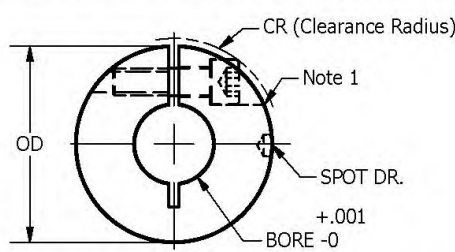


COMPONENTS

Precision Split-Hub Shaft Collar

Inch and Metric versions



Tolerances	Suffix	Material	Finish
------------	--------	----------	--------

.XX ±.016	A	Aluminum 2024-T351	Chromic Acid Anodize
.XXX ±.005	S	Stainless Steel 303	Clear Passivate

Bore +.001

Part Number	Suffix	Bore	OD	TH	CR	Spot	Screw
SH1-1616.094	A S	.094	.500	.16	.32	.06	3-48
SH1-1616.118	A S	.118	.500	.16	.32	.06	3-48
SH1-1616.125	A S	.125	.500	.16	.32	.06	3-48
SH1-1616.157	A S	4mm	.500	.16	.32	.06	3-48
SH1-1616.188	A S	.188	.500	.16	.32	.06	3-48
SH1-1812.181	A S	4.6mm	.562	.125	.33	-	1-72
SH1-1812.188	A S	.188	.562	.125	.33	-	1-72
SH1-1812.197	A S	5mm	.562	.125	.33	-	1-72
SH1-1812.250	A S	.250	.562	.125	.33	-	1-72
SH1-1815.125	A S	.125	.562	.156	.34	-	2-56
SH1-1815.181	A S	4.6mm	.562	.156	.34	-	2-56
SH1-1815.188	A S	.188	.562	.156	.34	-	2-56
SH1-1815.197	A S	5mm	.562	.156	.34	-	2-56
SH1-1815.250	A S	.250	.562	.156	.34	-	2-56
SH1-1815.260	A S	6.6mm	.562	.156	.34	-	2-56
SH1-2015.125	A S	.125	.625	.156	.34	-	2-56
SH1-2015.157	A S	4mm	.625	.156	.34	-	2-56
SH1-2015.181	A S	4.6mm	.625	.156	.34	-	2-56
SH1-2015.188	A S	.188	.625	.156	.34	-	2-56
SH1-2015.197	A S	5mm	.625	.156	.34	-	2-56
SH1-2015.220	A S	5.6mm	.625	.156	.34	-	2-56
SH1-2015.236	A S	6mm	.625	.156	.34	-	2-56
SH1-2015.250	A S	.250	.625	.156	.34	-	2-56
SH1-2015.260	A S	6.6mm	.625	.156	.34	-	2-56
SH1-2015.276	A S	7mm	.625	.156	.34	-	2-56
SH1-2019.181	A S	4.6mm	.625	.19	.34	.07	4-40
SH1-2019.188	A S	.188	.625	.19	.34	.07	4-40
SH1-2019.250	A S	.250	.625	.19	.34	.07	4-40
SH1-2019.260	A S	6.6mm	.625	.19	.34	.07	4-40
SH1-2418.250	---	.250	.750	.188	.41	-	4-40
SH1-2425.313	---	.313	.750	.250	.44	-	4-40
SH1-2814.250	---	.250	.875	.14	.46	-	2-56
SH1-2819.220	---	5.6mm	.875	.19	.48	-	4-40
SH1-2819.250	A S	.250	.875	.19	.48	-	4-40
SH1-2819.260	A S	6.6mm	.875	.19	.48	-	4-40
SH1-2819.299	A S	7.6mm	.875	.19	.48	-	4-40

Part Number	Suffix	Bore	OD	TH	CR	Spot	Screw
SH1-2819.312	A S	.312	.875	.19	.48	-	4-40
SH1-2819.339	A S	8.6mm	.875	.19	.48	-	4-40
SH1-2819.375	A S	.375	.875	.19	.48	-	4-40
SH1-2825.156	A ---	.156	.875	.250	.51	-	6-32
SH1-2825.157	A ---	4mm	.875	.250	.51	-	6-32
SH1-2825.188	A S	.188	.875	.250	.51	-	6-32
SH1-2825.197	A S	5mm	.875	.250	.51	-	6-32
SH1-2825.236	A S	6mm	.875	.250	.51	-	6-32
SH1-2825.250	A S	.250	.875	.250	.51	-	6-32
SH1-2825.260	A S	6.6mm	.875	.250	.51	-	6-32
SH1-2825.276	A S	7mm	.875	.250	.51	-	6-32
SH1-2825.281	A S	.281	.875	.250	.51	-	6-32
SH1-2825.313	A S	.313	.875	.250	.51	-	6-32
SH1-2825.315	A S	.315	.875	.250	.51	-	6-32
SH1-2825.316	A S	.316	.875	.250	.51	-	6-32
SH1-2825.317	A S	.317	.875	.250	.51	-	6-32
SH1-2825.318	A S	.318	.875	.250	.51	-	6-32
SH1-2825.319	A S	.319	.875	.250	.51	-	6-32
SH1-2825.320	A S	.320	.875	.250	.51	-	6-32
SH1-2825.321	A S	.321	.875	.250	.51	-	6-32
SH1-2825.322	A S	.322	.875	.250	.51	-	6-32
SH1-2825.323	A S	.323	.875	.250	.51	-	6-32
SH1-2825.324	A S	.324	.875	.250	.51	-	6-32
SH1-2825.325	A S	.325	.875	.250	.51	-	6-32
SH1-2825.326	A S	.326	.875	.250	.51	-	6-32
SH1-2825.327	A S	.327	.875	.250	.51	-	6-32
SH1-2825.328	A S	.328	.875	.250	.51	-	6-32
SH1-2825.329	A S	.329	.875	.250	.51	-	6-32
SH1-2825.330	A S	.330	.875	.250	.51	-	6-32
SH1-2825.331	A S	.331	.875	.250	.51	-	6-32
SH1-2825.332	A S	.332	.875	.250	.51	-	6-32
SH1-2825.333	A S	.333	.875	.250	.51	-	6-32
SH1-2825.334	A S	.334	.875	.250	.51	-	6-32
SH1-2825.335	A S	.335	.875	.250	.51	-	6-32
SH1-2825.336	A S	.336	.875	.250	.51	-	6-32
SH1-2825.337	A S	.337	.875	.250	.51	-	6-32
SH1-2825.338	A S	.338	.875	.250	.51	-	6-32
SH1-2825.339	A S	.339	.875	.250	.51	-	6-32
SH1-3037.438	A ---	.438	.937	.37	.49	-	6-32
SH1-3625.375	A S	.375	1.125	.25	.63	.19	8-32
SH1-3625.378	A S	9.6mm	1.125	.25	.63	.19	8-32
SH1-3625.394	A S	10mm	1.125	.25	.63	.19	8-32
SH1-3625.437	A S	.437	1.125	.25	.63	.19	8-32
SH1-3625.457	A S	11.6mm	1.125	.25	.63	.19	8-32
SH1-4032.250	A ---	.250	1.250	.32	.63	-	8-32
SH1-4032.375	A S	.375	1.250	.32	.63	-	8-32
SH1-4032.394	A S	10mm	1.250	.32	.63	-	8-32
SH1-4032.433	A S	11mm	1.250	.32	.63	-	8-32
SH1-4032.437	A S	.437	1.250	.32	.63	-	8-32
SH1-4032.457	A S	11.6mm	1.250	.32	.63	-	8-32
SH1-4032.472	A S	12mm	1.250	.32	.63	-	8-32
SH1-4032.500	A S	.500	1.250	.32	.63	-	8-32
SH1-4032535	A S	13.6mm	1.250	.32	.63	-	8-32
SH1-4032.551	A S	14mm	1.250	.32	.63	-	8-32
SH1-4032.562	A S	.562	1.250	.32	.63	-	8-32
SH1-4032.591	A S	15mm	1.250	.32	.63	-	8-32
SH1-4032.625	A S	.625	1.250	.32	.63	-	8-32
SH1-4032.630	A S	16mm	1.250	.32	.63	-	8-32