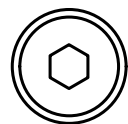
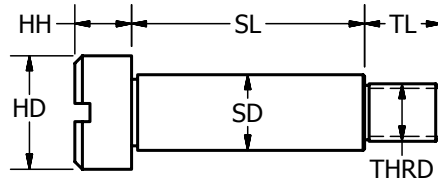
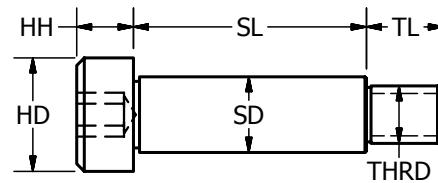


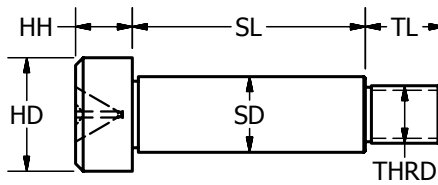
Slotted Head



Hex Socket Head



Cross Recess Head

**Choose ondrives because:**

Precision shoulder screws have undersize diameter and oversize shoulder length for free rotation of components

We will beat any price in quantity - call us at 1-888-260-7466

Stocked in 303 and 416 RC 26-32 Stainless Steel

Inch or metric sizes in stock for same day shipment

Custom shoulder screws in virtually any material, change any dimension

Custom screws to your print

Quick delivery on standards and customs

Large quantities - 1,000 to 20,000 quickly

3D CAD and product Parameter Search at www.ondrivesUS.com

G

FASTENERS

Precision Shoulder Screws

303, 416 Rc 26-32, Stainless Steel
Inch

G

303 SS - Rockwell B-83
416 SS - Rockwell C26-32

Part Number						-.001	+.002	±.005	±.005	THRD	TL	HX	DR
Slotted Head		Hex Socket Head		Phillips Head									
303SS	416SS	303SS	416SS	303SS	416SS	SD	SL	HD	HH				
G4301	G4501	G4401	G4601	---	---	.0935	.0943	3/16	3/32	#2-56	1/8	1/16	---
G4302	G4502	G4402	G4602	---	---	.0935	.1255	3/16	3/32	#2-56	1/8	1/16	---
G4303	G4503	G4403	G4603	---	---	.0935	.1880	3/16	3/32	#2-56	1/8	1/16	---
G4304	G4504	G4404	G4604	---	---	.0935	.2505	3/16	3/32	#2-56	1/8	1/16	---
G4305	G4505	G4405	G4605	---	---	.0935	.3130	3/16	3/32	#2-56	1/8	1/16	---
G4306	G4506	G4406	G4606	---	---	.0935	.3755	3/16	3/32	#2-56	1/8	1/16	---
G4307	G4507	G4407	G4607	---	---	.0935	.5005	3/16	3/32	#2-56	1/8	1/16	---
G4310	G4510	G4410	G4610	G4710	G4810	.1245	.1255	1/4	1/8	#4-40	5/32	5/64	1
G4311	G4511	G4411	G4611	G4711	G4811	.1245	.1880	1/4	1/8	#4-40	5/32	5/64	1
G4312	G4512	G4412	G4612	G4712	G4812	.1245	.2505	1/4	1/8	#4-40	5/32	5/64	1
G4313	G4513	G4413	G4613	G4713	G4813	.1245	.3130	1/4	1/8	#4-40	5/32	5/64	1
G4314	G4514	G4414	G4614	G4714	G4814	.1245	.3755	1/4	1/8	#4-40	5/32	5/64	1
G4370	G4570	G4470	G4670	---	---	.1245	.5005	1/4	1/8	#4-40	5/32	5/64	---
G4371	G4571	G4471	G4671	---	---	.1245	.6255	1/4	1/8	#4-40	5/32	5/64	---
G4372	G4572	G4472	G4672	---	---	.1245	.7505	1/4	1/8	#4-40	5/32	5/64	---
G4373	G4573	G4473	G4673	---	---	.1245	1.0005	1/4	1/8	#4-40	5/32	5/64	---
G4361	G4561	G4461	G4661	---	---	.1557	.1255	9/32	1/8	#6-32	3/16	3/32	---
G4362	G4562	G4462	G4662	---	---	.1557	.1880	9/32	1/8	#6-32	3/16	3/32	---
G4363	G4563	G4463	G4663	---	---	.1557	.2505	9/32	1/8	#6-32	3/16	3/32	---
G4364	G4564	G4464	G4664	---	---	.1557	.3130	9/32	1/8	#6-32	3/16	3/32	---
G4365	G4565	G4465	G4665	---	---	.1557	.3755	9/32	1/8	#6-32	3/16	3/32	---
G4385	G4585	G4485	G4685	---	---	.1557	.4380	9/32	1/8	#6-32	3/16	3/32	---
G4374	G4574	G4474	G4674	G4774	---	.1557	.5005	9/32	1/8	#6-32	3/16	3/32	1
G4375	G4575	G4475	G4675	---	---	.1557	.6255	9/32	1/8	#6-32	3/16	3/32	---
G4376	G4576	G4476	G4676	---	---	.1557	.7505	9/32	1/8	#6-32	3/16	3/32	---
G4377	G4577	G4477	G4677	---	---	.1557	1.0005	9/32	1/8	#6-32	3/16	3/32	---
G4315	G4515	G4415	G4615	G4715	G4815	.1870	.1255	5/16	5/32	#8-32	3/16	3/32	2
G4383	G4583	G4483	G4683	G4783	G4883	.1870	.1565	5/16	5/32	#8-32	3/16	3/32	2
G4316	G4516	G4416	G4616	G4716	G4816	.1870	.1880	5/16	5/32	#8-32	3/16	3/32	2
G4317	G4517	G4417	G4617	G4717	G4817	.1870	.2505	5/16	5/32	#8-32	3/16	3/32	2
G4318	G4518	G4418	G4618	G4718	G4818	.1870	.3130	5/16	5/32	#8-32	3/16	3/32	2
G4319	G4519	G4419	G4619	G4719	G4819	.1870	.3755	5/16	5/32	#8-32	3/16	3/32	2
G4320	G4520	G4420	G4620	G4720	G4820	.1870	.5005	5/16	5/32	#8-32	3/16	3/32	2
G4321	G4521	G4421	G4621	G4721	G4821	.1870	.6255	5/16	5/32	#8-32	3/16	3/32	2
G4322	G4522	G4422	G4622	G4722	G4822	.1870	.7505	5/16	5/32	#8-32	3/16	3/32	2
G4382	G4582	G4482	G4682	G4782	G4882	.1870	.8755	5/16	5/32	#8-32	3/16	3/32	2
G4323	G4523	G4423	G4623	G4723	G4823	.1870	1.0005	5/16	5/32	#8-32	3/16	3/32	2
G4324	G4524	G4424	G4624	G4724	G4824	.1870	1.2505	5/16	5/32	#8-32	3/16	3/32	2
G4381	G4581	G4481	G4681	---	---	.1870	1.3755	5/16	5/32	#8-32	3/16	3/32	2
G4325	G4525	G4425	G4625	G4725	G4825	.1870	1.5005	5/16	5/32	#8-32	3/16	3/32	2
G4326	G4526	G4426	G4626	G4726	G4826	.2495	.1255	3/8	3/16	#10-32	1/4	1/8	2
G4327	G4527	G4427	G4627	G4727	G4827	.2495	.1880	3/8	3/16	#10-32	1/4	1/8	2
G4328	G4528	G4428	G4628	G4728	G4828	.2495	.2505	3/8	3/16	#10-32	1/4	1/8	2
G4329	G4529	G4429	G4629	G4729	G4829	.2495	.3130	3/8	3/16	#10-32	1/4	1/8	2
G4330	G4530	G4430	G4630	G4730	G4830	.2495	.3755	3/8	3/16	#10-32	1/4	1/8	2
G4390	G4590	G4490	G4690	---	---	.2495	.4380	3/8	3/16	#10-32	1/4	1/8	2
G4331	G4531	G4431	G4631	G4731	G4831	.2495	.5005	3/8	3/16	#10-32	1/4	1/8	2
G4332	G4532	G4432	G4632	G4732	G4832	.2495	.6255	3/8	3/16	#10-32	1/4	1/8	2
G4333	G4533	G4433	G4633	G4733	G4833	.2495	.7505	3/8	3/16	#10-32	1/4	1/8	2
G4388	G4588	G4488	G4688	---	---	.2495	.8755	3/8	3/16	#10-32	1/4	1/8	2
G4334	G4534	G4434	G4634	G4734	G4834	.2495	1.0005	3/8	3/16	#10-32	1/4	1/8	2
G4335	G4535	G4435	G4635	G4735	G4835	.2495	1.2505	3/8	3/16	#10-32	1/4	1/8	2
G4336	G4536	G4436	G4636	G4736	G4836	.2495	1.5005	3/8	3/16	#10-32	1/4	1/8	2

Phillips Head: special order only, minimum quantity required

ondrives.us

☎ 1-888-260-7466
📄 516-771-6444

💻 sales@ondrivesus.com
🌐 www.ondrivesus.com

FASTENERS

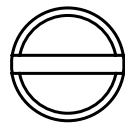
Precision Shoulder Screws

303, 416 Rc 26-32, Stainless Steel
Inch

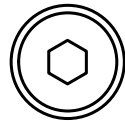
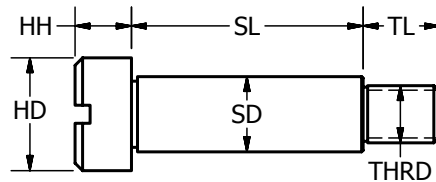
303 SS - Rockwell B-83
416 SS - Rockwell C26-32

Part Number						-.001	+.002	±.005	±.005	THR	TL	HX	DR
Slotted Head		Hex Socket Head		Phillips Head									
303SS	416SS	303SS	416SS	303SS	416SS	SD	SL	HD	HH				
G4337	G4537	G4437	G4637	G4737	G4837	.3120	.2505	1/2	7/32	#1/4-20	7/16	5/32	3
G4338	G4538	G4438	G4638	G4738	G4838	.3120	.3130	1/2	7/32	#1/4-20	7/16	5/32	3
G4339	G4539	G4439	G4639	G4739	G4839	.3120	.3755	1/2	7/32	#1/4-20	7/16	5/32	3
G4340	G4540	G4440	G4640	G4740	G4840	.3120	.5005	1/2	7/32	#1/4-20	7/16	5/32	3
G4341	G4541	G4441	G4641	G4741	G4841	.3120	.6255	1/2	7/32	#1/4-20	7/16	5/32	3
G4342	G4542	G4442	G4642	G4742	G4842	.3120	.7505	1/2	7/32	#1/4-20	7/16	5/32	3
G4378	G4578	G4478	G4678	----	----	.3120	.8755	1/2	7/32	#1/4-20	7/16	5/32	3
G4389	G4589	G4489	G4689	----	----	.3120	1.0005	1/2	7/32	#1/4-20	7/16	5/32	3
G4343	G4543	G4443	G4643	G4743	G4843	.3745	.3130	1/2	7/32	#1/4-20	7/16	5/32	3
G4344	G4544	G4444	G4644	G4744	G4844	.3745	.3755	1/2	7/32	#1/4-20	7/16	5/32	3
G4345	G4545	G4445	G4645	G4745	G4845	.3745	.5005	1/2	7/32	#1/4-20	7/16	5/32	3
G4346	G4546	G4446	G4646	G4746	G4846	.3745	.6255	1/2	7/32	#1/4-20	7/16	5/32	3
G4347	G4547	G4447	G4647	G4747	G4847	.3745	.3130	9/16	1/4	#5/16-18	1/2	3/16	4
G4348	G4548	G4448	G4648	G4748	G4848	.3745	.3755	9/16	1/4	#5/16-18	1/2	3/16	4
G4349	G4549	G4449	G4649	G4749	G4849	.3745	.5005	9/16	1/4	#5/16-18	1/2	3/16	4
G4350	G4550	G4450	G4650	G4750	G4850	.3745	.6255	9/16	1/4	#5/16-18	1/2	3/16	4
G4379	G4579	G4479	G4679	----	----	.3745	.7505	9/16	1/4	#5/16-18	1/2	3/16	4
G4380	G4580	G4480	G4680	----	----	.3745	1.0005	9/16	1/4	#5/16-18	1/2	3/16	4
G4386	G4586	G4486	G4686	----	----	.3745	1.2505	9/16	1/4	#5/16-18	1/2	3/16	4
G4384	G4584	G4484	G4684	----	----	.3745	1.5005	9/16	1/4	#5/16-18	1/2	3/16	4
G4387	G4587	G4487	G4687	----	----	.4995	.3130	3/4	5/16	3/8-16	5/8	1/4	4
G4351	G4551	G4451	G4651	G4751	G4851	.4995	.5005	3/4	5/16	3/8-16	5/8	1/4	4
G4352	G4552	G4452	G4652	G4752	G4852	.4995	.6255	3/4	5/16	3/8-16	5/8	1/4	4

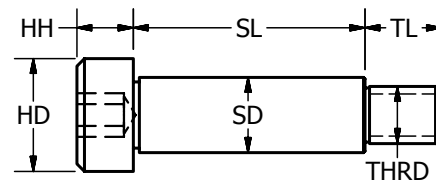
Phillips Head: special order only, minimum quantity required



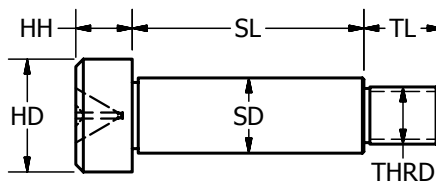
Slotted Head



Hex Socket Head



Cross Recess Head



GM

FASTENERS

Precision Shoulder Screws

303, 416 Rc 26-32, Stainless Steel
Metric

GM

Part Number						303 SS - Rockwell B-83 416 SS - Rockwell C26-32							
Slotted Head		Hex Socket Head		Phillips Head		-.025	+.050	±.127	±.127				
303SS	416SS	303SS	416SS	303SS	416SS	SD	SL	HD	HH	THRD	TL	HX	DR
GM6364	GM6564	GM6464	GM6664	GM6764	GM6864	3.987	3.01	6	3	M3	4	2	1
GM6301	GM6501	GM6401	GM6601	GM6701	GM6801	3.987	4.013	6	3	M3	4	2	1
GM6302	GM6502	GM6402	GM6602	GM6702	GM6802	3.987	5.013	6	3	M3	4	2	1
GM6303	GM6503	GM6403	GM6603	GM6703	GM6803	3.987	6.013	6	3	M3	4	2	1
GM6365	GM6565	GM6465	GM6665	GM6765	GM6865	3.987	7.013	6	3	M3	4	2	1
GM6304	GM6504	GM6404	GM6604	GM6704	GM6804	3.987	8.013	6	3	M3	4	2	1
GM6305	GM6505	GM6405	GM6605	GM6705	GM6805	3.987	10.013	6	3	M3	4	2	1
GM6377	GM6577	GM6477	GM6677	GM6777	GM6877	3.987	12.013	6	3	M3	4	2	1
GM6380	GM6580	GM6480	GM6680	GM6780	GM6880	3.987	16.013	6	3	M3	4	2	1
GM6381	GM6581	GM6481	GM6681	GM6781	GM6881	3.987	20.013	6	3	M3	4	2	1
GM6360	GM6560	GM6460	GM6660	GM6760	GM6860	3.987	30.013	6	3	M3	4	2	1
GM6306	GM6506	GM6406	GM6606	GM6706	GM6806	4.987	4.013	8	4	M4	5	2.5	2
GM6307	GM6507	GM6407	GM6607	GM6707	GM6807	4.987	5.013	8	4	M4	5	2.5	2
GM6308	GM6508	GM6408	GM6608	GM6708	GM6808	4.987	6.013	8	4	M4	5	2.5	2
GM6366	GM6566	GM6466	GM6666	GM6766	GM6866	4.987	7.013	8	4	M4	5	2.5	2
GM6309	GM6509	GM6409	GM6609	GM6709	GM6809	4.987	8.013	8	4	M4	5	2.5	2
GM6375	GM6575	GM6475	GM6675	GM6775	GM6875	4.987	9.013	8	4	M4	5	2.5	2
GM6310	GM6510	GM6410	GM6610	GM6710	GM6810	4.987	10.013	8	4	M4	5	2.5	2
GM6311	GM6511	GM6411	GM6611	GM6711	GM6811	4.987	12.013	8	4	M4	5	2.5	2
GM6312	GM6512	GM6412	GM6612	GM6712	GM6812	4.987	14.013	8	4	M4	5	2.5	2
GM6313	GM6513	GM6413	GM6613	GM6713	GM6813	4.987	16.013	8	4	M4	5	2.5	2
GM6314	GM6514	GM6414	GM6614	GM6714	GM6814	4.987	20.013	8	4	M4	5	2.5	2
GM6367	GM6567	GM6467	GM6667	GM6767	GM6867	4.987	21.013	8	4	M4	5	2.5	2
GM6315	GM6515	GM6415	GM6615	GM6715	GM6815	4.987	25.013	8	4	M4	5	2.5	2
GM6368	GM6568	GM6468	GM6668	GM6768	GM6868	4.987	26.013	8	4	M4	5	2.5	2
GM6316	GM6516	GM6416	GM6616	GM6716	GM6816	4.987	30.013	8	4	M4	5	2.5	2
GM6317	GM6517	GM6417	GM6617	GM6717	GM6817	5.987	4.013	10	5	M5	6	3	2
GM6318	GM6518	GM6418	GM6618	GM6718	GM6818	5.987	5.013	10	5	M5	6	3	2
GM6319	GM6519	GM6419	GM6619	GM6719	GM6819	5.987	6.013	10	5	M5	6	3	2
GM6320	GM6520	GM6420	GM6620	GM6720	GM6820	5.987	8.013	10	5	M5	6	3	2
GM6369	GM6569	GM6469	GM6669	GM6769	GM6869	5.987	9.013	10	5	M5	6	3	2
GM6321	GM6521	GM6421	GM6621	GM6721	GM6821	5.987	10.013	10	5	M5	6	3	2
GM6322	GM6522	GM6422	GM6622	GM6722	GM6822	5.987	12.013	10	5	M5	6	3	2
GM6323	GM6523	GM6423	GM6623	GM6723	GM6823	5.987	14.013	10	5	M5	6	3	2
GM6370	GM6570	GM6470	GM6670	GM6770	GM6870	5.987	15.013	10	5	M5	6	3	2
GM6324	GM6524	GM6424	GM6624	GM6724	GM6824	5.987	16.013	10	5	M5	6	3	2
GM6325	GM6525	GM6425	GM6625	GM6725	GM6825	5.987	20.013	10	5	M5	6	3	2
GM6326	GM6526	GM6426	GM6626	GM6726	GM6826	5.987	25.013	10	5	M5	6	3	2
GM6327	GM6527	GM6427	GM6627	GM6727	GM6827	5.987	30.013	10	5	M5	6	3	2
GM6328	GM6528	GM6428	GM6628	GM6728	GM6828	7.987	6.013	12	6	M6	11	4	3
GM6329	GM6529	GM6429	GM6629	GM6729	GM6829	7.987	8.013	12	6	M6	11	4	3
GM6330	GM6530	GM6430	GM6630	GM6730	GM6830	7.987	10.01	12	6	M6	11	4	3
GM6331	GM6531	GM6431	GM6631	GM6731	GM6831	7.987	12.013	12	6	M6	11	4	3
GM6363	GM6563	GM6463	GM6663	GM6763	GM6863	7.987	14.013	12	6	M6	11	4	3
GM6332	GM6532	GM6432	GM6632	GM6732	GM6832	7.987	16.013	12	6	M6	11	4	3

Phillips Head: special order only, minimum quantity required

ondrives.us

☎ 1-888-260-7466
📄 516-771-6444

💻 sales@ondrivesus.com
🌐 www.ondrivesus.com

GM

FASTENERS

Precision Shoulder Screws

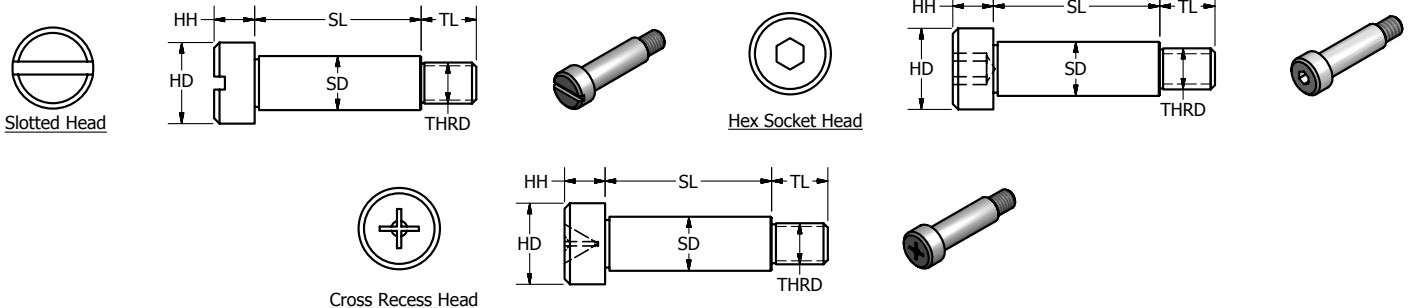
303, 416 Rc 26-32, Stainless Steel
Metric

GM

303 SS - Rockwell B-83
416 SS - Rockwell C26-32

Part Number						-.025	+.050	±.127	±.127	THRD	TL	HX	DR
Slotted Head		Hex Socket Head		Phillips Head									
303SS	416SS	303SS	416SS	303SS	416SS	SD	SL	HD	HH				
GM6333	GM6533	GM6433	GM6633	GM6733	GM6833	7.987	20.013	12	6	M6	11	4	3
GM6351	GM6551	GM6451	GM6651	GM6751	GM6851	7.987	25.013	12	6	M6	11	4	3
GM6378	GM6578	GM6478	GM6678	GM6778	GM6878	7.987	30.013	12	6	M6	11	4	3
GM6379	GM6579	GM6479	GM6679	GM6779	GM6879	7.987	40.013	12	6	M6	11	4	3
GM6371	GM6571	GM6471	GM6671	GM6771	GM6871	9.987	4.013	12	6	M6	11	4	3
GM6334	GM6534	GM6434	GM6634	GM6734	GM6834	9.987	8.013	12	6	M6	11	4	3
GM6335	GM6535	GM6435	GM6635	GM6735	GM6835	9.987	10.013	12	6	M6	11	4	3
GM6336	GM6536	GM6436	GM6636	GM6736	GM6836	9.987	12.013	12	6	M6	11	4	3
GM6337	GM6537	GM6437	GM6637	GM6737	GM6837	9.987	16.013	12	6	M6	11	4	3
GM6372	GM6572	GM6472	GM6672	GM6772	GM6872	9.987	5.013	14	7	M8	12	5	4
GM6338	GM6538	GM6438	GM6638	GM6738	GM6838	9.987	8.013	14	7	M8	12	5	4
GM6373	GM6573	GM6473	GM6673	GM6773	GM6873	9.987	9.013	14	7	M8	12	5	4
GM6339	GM6539	GM6439	GM6639	GM6739	GM6839	9.987	10.013	14	7	M8	12	5	4
GM6340	GM6540	GM6440	GM6640	GM6740	GM6840	9.987	12.013	14	7	M8	12	5	4
GM6350	GM6550	GM6450	GM6650	GM6750	GM6850	9.987	13.013	14	7	M8	12	5	4
GM6341	GM6541	GM6441	GM6641	GM6741	GM6841	9.987	16.013	14	7	M8	12	5	4
GM6356	GM6556	GM6456	GM6656	GM6756	GM6856	9.987	20.013	14	7	M8	12	5	4
GM6352	GM6552	GM6452	GM6652	GM6752	GM6852	9.987	25.013	14	7	M8	12	5	4
GM6357	GM6557	GM6457	GM6657	GM6757	GM6857	9.987	30.013	14	7	M8	12	5	4
GM6358	GM6558	GM6458	GM6658	GM6758	GM6858	9.987	40.013	14	7	M8	12	5	4
GM6359	GM6559	GM6459	GM6659	GM6759	GM6859	9.987	45.013	14	7	M8	12	5	4
GM6362	GM6562	GM6462	GM6662	GM6762	GM6862	9.987	90.013	14	7	M8	12	5	4
GM6376	GM6576	GM6476	GM6676	GM6776	GM6876	11.987	10.013	20	8	M10	16	6	4
GM6342	GM6542	GM6442	GM6642	GM6742	GM6842	11.987	12.013	20	8	M10	16	6	4
GM6343	GM6543	GM6443	GM6643	GM6743	GM6843	11.987	16.013	20	8	M10	16	6	4
GM6374	GM6574	GM6474	GM6674	GM6774	GM6874	11.987	17.013	20	8	M10	16	6	4
GM6344	GM6544	GM6444	GM6644	GM6744	GM6844	11.987	20.013	20	8	M10	16	6	4
GM6345	GM6545	GM6445	GM6645	GM6745	GM6845	11.987	25.013	20	8	M10	16	6	4
GM6354	GM6554	GM6454	GM6654	GM6754	GM6854	11.987	30.013	20	8	M10	16	6	4
GM6353	GM6553	GM6453	GM6653	GM6753	GM6853	11.987	35.013	20	8	M10	16	6	4
GM6355	GM6555	GM6455	GM6655	GM6755	GM6855	11.987	40.013	20	8	M10	16	6	4
GM6361	GM6561	GM6461	GM6661	GM6761	GM6861	11.987	60.013	20	8	M10	16	6	4

Phillips Head: special order only, minimum quantity required



ondrives.us

1-888-260-7466
516-771-6444

sales@ondrivesus.com
www.ondrivesus.com

G

FASTENERS

Precision Shoulder Screws

Shallow Head
Inch

G

Part Number	303 SS - Rockwell B-83						
Slotted Head	-.001 SD	+.002 SL	±.005 HD	±.005 HH	THRD	TL	LG
G5010	.0935	.130	3/16	1/16	2-56	.246	0.439
G5011	.0935	.130	7/32	1/16	2-56	.246	0.439
G5012	.1248	.099	3/16	1/16	4-40	.292	0.454
G5013	.1248	.146	1/4	1/16	4-40	.323	0.532
G5014	.1873	.186	5/16	1/16	8-32	.440	0.689
G5015	.2498	.186	3/8	1/16	10-32	.518	0.767
G5016	.3748	.270	9/16	1/16	1/4-20	.684	1.017

