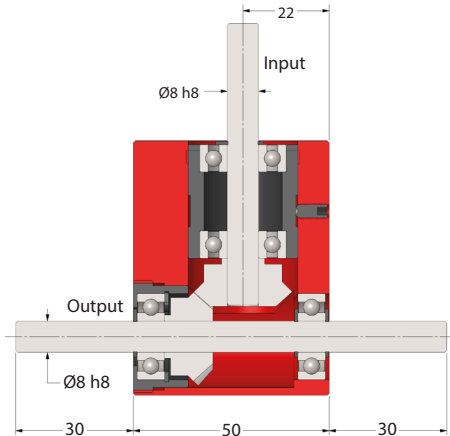
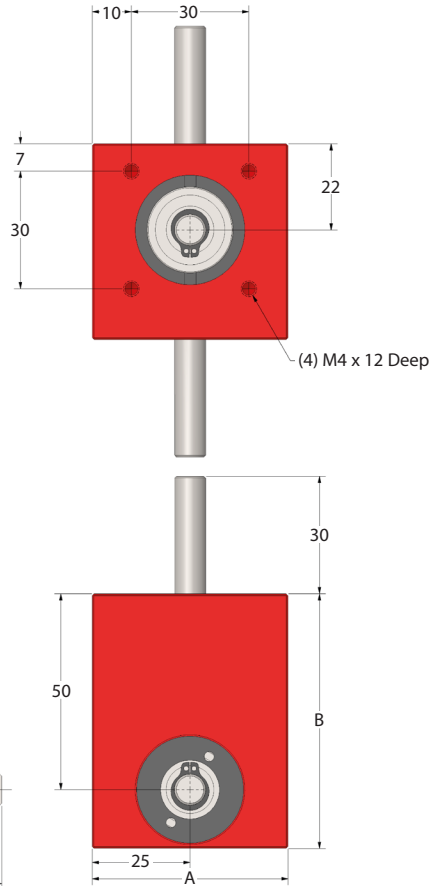
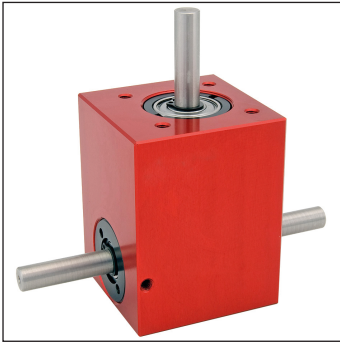


BL8**e-cad**
Drawings
Available

GEARBOXES

Bevel Tee Gearbox

Right Angled Drive 0.2 – 4 Nm **1:1 - 4:1**

Part Number	Ratio	Efficiency at 1000 Rpm	A	B
BL8-1	1:1	88%	50	65
BL8-2	2:1	88%	50	65
BL8-3	3:1	88%	50	75
BL8-4	4:1	88%	60	80
BL8-XH	1:1 - 4:1		Hardened Gears (= Nm x 2)	

Weight: 0.56 kg (1:1), 0.54 kg (2:1), 0.66 kg (3:1), 1.10 kg (4:1)**Backlash:** ≈1°.**Max. Input Speed:** 2,000 Rpm.**Greased for Life:** Shell Gadus S2 V220AD 2.

Testing in your application is necessary.

You will need to assess duty cycles and confirm gearbox suitability with your own calculations.

All figures listed are to be used for guidance only.

Output Torque Nm

Rpm	Reduction Ratio			
Input	1:1	2:1	3:1	4:1
2000	0.4	0.2	0.5	0.8
1000	0.5	0.3	0.5	0.9
500	0.5	0.3	0.6	1.1
200	0.6	0.4	0.7	1.3
100	0.7	0.4	0.8	1.4
50	0.8	0.4	0.9	1.6
10	1.0	0.6	1.2	2.0

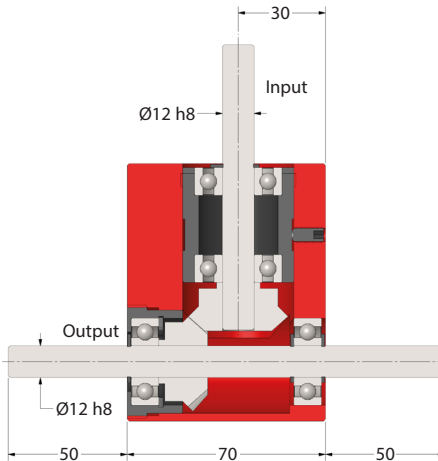
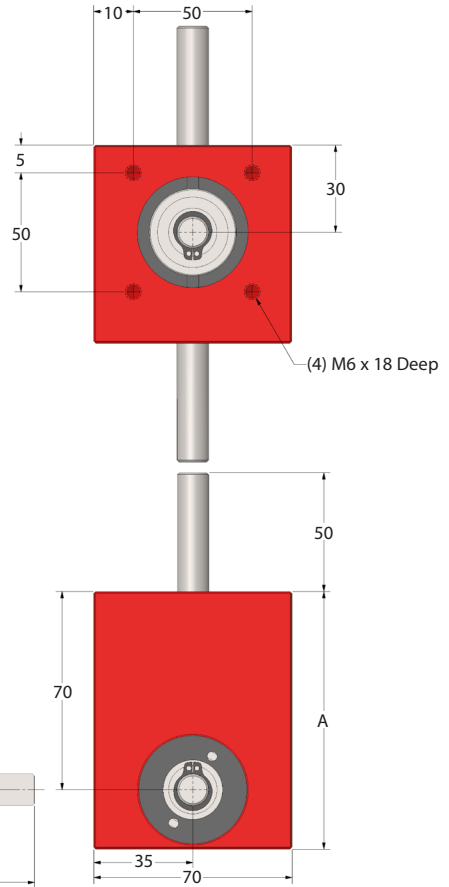
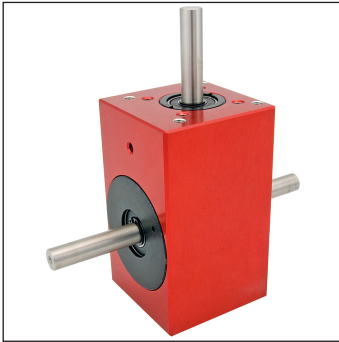
GEARBOXES

Bevel Tee Gearbox

Right Angled Drive 1.1 – 12 Nm **1:1 - 4:1**

e-cad
Drawings
Available

BL15



Part Number	Ratio	Efficiency at 1000 Rpm	A
BL15-1	1:1	88%	90
BL15-2	2:1	88%	105
BL15-3	3:1	88%	110
BL15-4	4:1	88%	120
BL15-XH	1:1 - 4:1	Hardened Gears (= Nm x 2)	

Weight: 1.51 kg (1:1), 1.75 kg (2:1), 2.04 kg (3:1), 2.14 kg (4:1)

Backlash: $\approx 1^\circ$.

Max. Input Speed: 2,000 Rpm.

Greased for Life: Shell Gadus S2 V220AD 2.

Testing in your application is necessary.

You will need to assess duty cycles and confirm gearbox suitability with your own calculations.

All figures listed are to be used for guidance only.

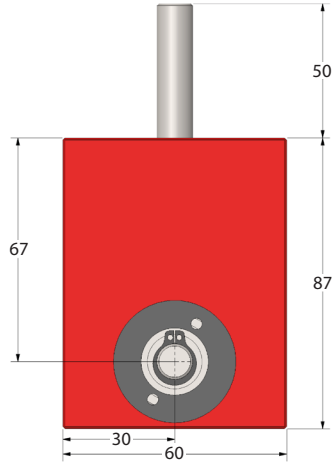
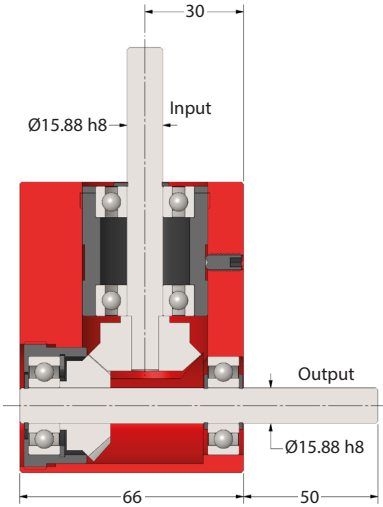
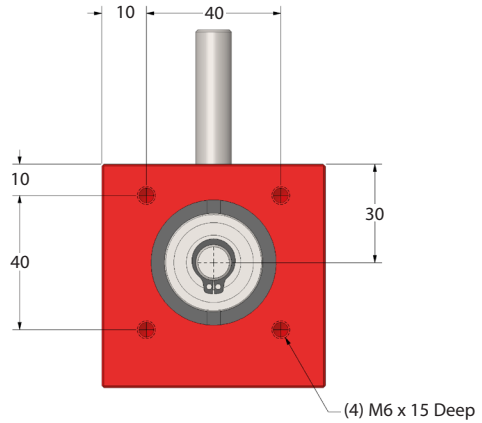
Output Torque Nm

Rpm	Reduction Ratio			
Input	1:1	2:1	3:1	4:1
2000	2.0	1.1	2.3	2.2
1000	2.3	1.2	2.6	2.5
500	2.7	1.4	3.0	2.8
200	3.2	1.7	3.6	3.4
100	3.5	2.0	4.0	3.7
50	3.9	2.2	4.5	4.2
10	5.0	2.9	6.0	5.5

BL18**e-cad**
Drawings
Available

GEARBOXES

Bevel Tee Gearbox

Right Angled Drive & Hardened Teeth 4 – 10 Nm **1:1****Part
Number****BL18-XH-1****Ratio**

1:1 Hardened

**Efficiency
at
1000 Rpm**

88%

Weight: 1.3 kg**Backlash:** ≈1°.**Max. Input Speed:** 2,000 Rpm.**Greased for Life:** Shell Gadus S2 V220AD 2.

Testing in your application is necessary.

You will need to assess duty cycles and confirm gearbox suitability with your own calculations.

All figures listed are to be used for guidance only.

Output Torque Nm

Rpm	Reduction Ratio
Input	1:1 Hardened
2000	4.0
1000	4.6
500	5.4
200	6.4
100	7.0
50	7.8
10	10.0