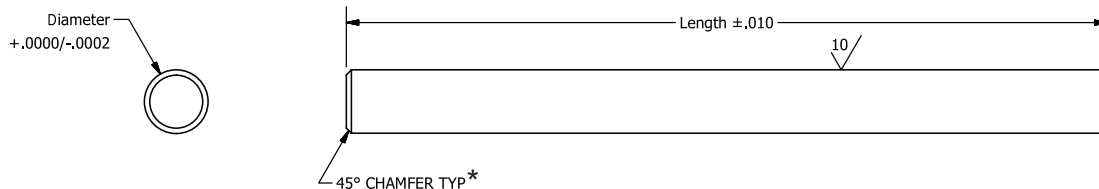
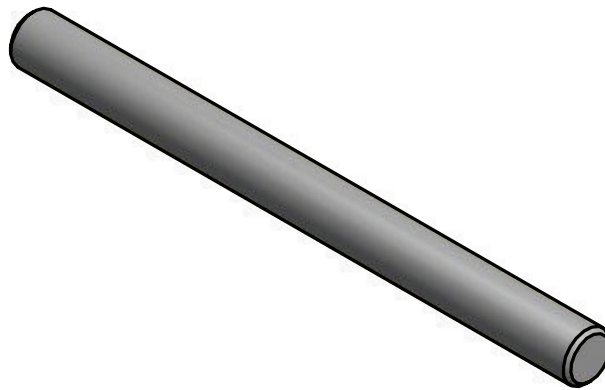


**GA**  
**INCH**

## Precision Ground Shafting

### 12L14 Steel



- + Precision ground 12L14 Steel
- + 8 Diameters .0312 to .3750
- + 13 Lengths from 3" to 36"
- + Chamfered both ends\*
- + Straightness .0004 in/in up to 1/4" diameter
- + Straightness .0006 in/in over to 1/4" diameter
- + From stock delivery
- + Other materials available from stock: 303, 316, 17-4 PH
- + Special sizes and other materials are available, please ask
- + Customizing: grooves, journals, flats, drill holes, thread + tapped holes, chamfers, special diameters, special lengths

**GA  
INCH**

# Precision Ground Shafting

## 12L14 Steel

Straightness .0004in/in up to 1/4" Dia., .0006in/in over 1/4" Dia.  
Surface Finish 10µin

Rockwell B75-95

\*Chamfered both ends

Ref.	+ .0000 / - .0002 Diameter	Part Number	+/- .010 Length
1/32"	0.0312	GA0312-30	3.00
		GA0312-40	4.00
		GA0312-50	5.00
		GA0312-60	6.00
		GA0312-70	7.00
		GA0312-80	8.00
		GA0312-90	9.00
		GA0312-100	10.00
		GA0312-120	12.00
		GA0312-180	18.00
1/16"	0.0625	GA0625-30	3.00
		GA0625-40	4.00
		GA0625-50	5.00
		GA0625-60	6.00
		GA0625-70	7.00
		GA0625-80	8.00
		GA0625-90	9.00
		GA0625-100	10.00
		GA0625-120	12.00
		GA0625-180	18.00
		GA0625-240	24.00
		GA0625-300	30.00
		GA0625-360	36.00
		1/8"	0.1250
GA1250-40	4.00		
GA1250-50	5.00		
GA1250-60	6.00		
GA1250-70	7.00		
GA1250-80	8.00		
GA1250-90	9.00		
GA1250-100	10.00		
GA1250-120	12.00		
GA1250-180	18.00		
GA1250-240	24.00		
GA1250-300	30.00		
GA1250-360	36.00		
3/16"	0.1875		
		GA1875-40	4.00
		GA1875-50	5.00
		GA1875-60	6.00
		GA1875-70	7.00
		GA1875-80	8.00
		GA1875-90	9.00
		GA1875-100	10.00
		GA1875-120	12.00
		GA1875-180	18.00
		GA1875-240	24.00
		GA1875-300	30.00
		GA1875-360	36.00

Ref.	+ .0000 / - .0002 Diameter	Part Number	+/- .010 Length
1/4"	0.2500	GA2500-30	3.00
		GA2500-40	4.00
		GA2500-50	5.00
		GA2500-60	6.00
		GA2500-70	7.00
		GA2500-80	8.00
		GA2500-90	9.00
		GA2500-100	10.00
		GA2500-120	12.00
		GA2500-180	18.00
5/16"	0.3125	GA2500-240	24.00
		GA2500-300	30.00
		GA2500-360	36.00
		GA3125-30	3.00
		GA3125-40	4.00
		GA3125-50	5.00
		GA3125-60	6.00
		GA3125-70	7.00
		GA3125-80	8.00
		GA3125-90	9.00
		GA3125-100	10.00
		GA3125-120	12.00
		GA3125-180	18.00
		GA3125-240	24.00
3/8"	0.3750	GA3125-300	30.00
		GA3125-360	36.00
		GP3750-30	3.00
		GP3750-40	4.00
		GP3750-50	5.00
		GP3750-60	6.00
		GP3750-70	7.00
		GP3750-90	9.00
		GP3750-100	10.00
		GA3750-120	12.00
		GA3750-180	18.00
		GA3750-240	24.00
		GA3750-300	30.00
		GA3750-360	36.00

\*Chamfered 0.0937" diameter and larger,  
Rough cut under 0.0937" diameter