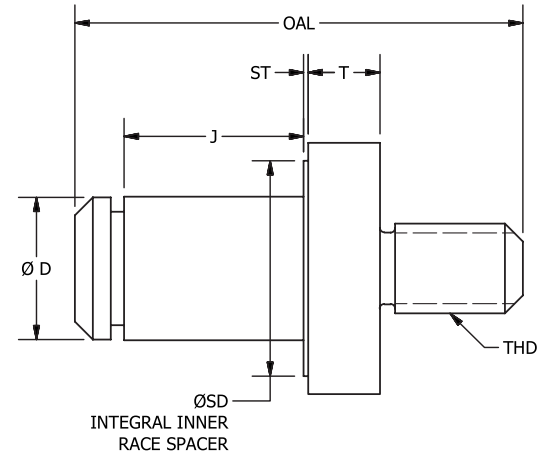
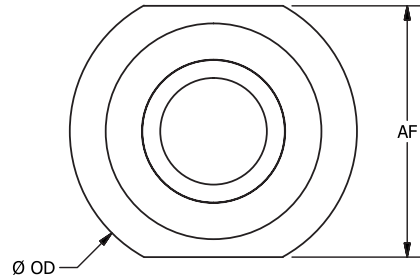
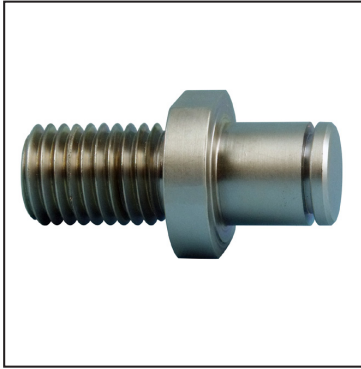


RSM

COMPONENTS

RSM

Stud Mount Support For Bearings - Gears - Pulleys Inch



Part Number	D	J	OD	AF	T	THD	OAL	SD	ST
	Journal Dia.	Journal Length	Journal Dia.	Across Flats	Flange Thickness	Thread	Overall Length	Spacer Dia.	Spacer Thickness
RSM-250	0.250	0.375	0.500	7/16	0.25	1/4-20	1.06	0.375	0.016
RSM-375	0.375	0.438	0.750	5/8	0.25	1/4-20	1.23	0.562	0.016
RSM-500	0.500	0.625	1.000	7/8	0.25	5/16-18	1.56	0.750	0.016
RSM-625	0.625	0.625	1.125	1	0.25	5/16-18	1.59	0.875	0.016
RSM-750	0.750	0.625	1.250	1-1/8	0.25	3/8-16	1.79	1.000	0.016
RSM-1000	1.000	0.625	1.500	1-5/16	0.25	1/2-13	2.00	1.250	0.016

Materials

Mount: 1215 Steel, Zinc Plated

Retaining Ring: Steel

Shim Spacers: Stainless Steel

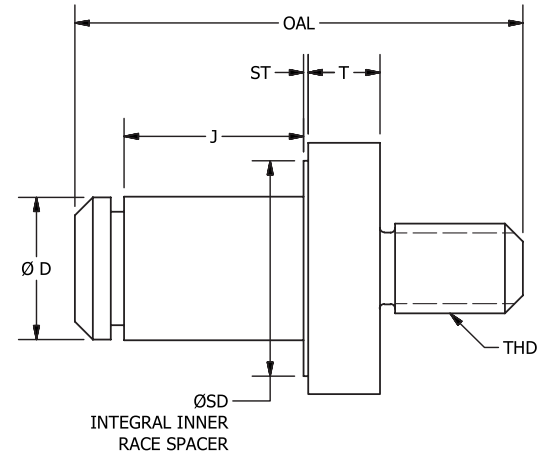
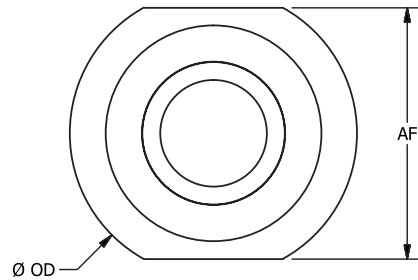
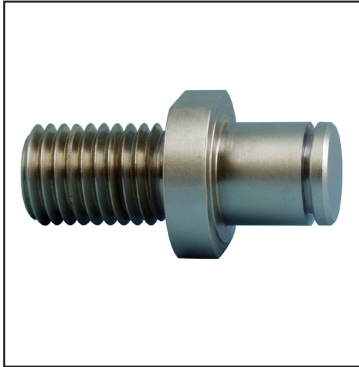
Retaining ring (E-Clip) and 3 sizes of shim spacers supplied.

RSM-M

COMPONENTS

RSM-M

Stud Mount Support For Bearings - Gears - Pulleys Metric



Part Number	D Journal Dia.	J Journal Length	OD Overall Dia.	AF Across Flats	T Flange Thickness	THD Thread	OAL Overall Length	SD Spacer Dia.	ST Spacer Thickness
RSM-08M	8	9	15	13	7	M6x1	28.0	12	0.4
RSM-10M	10	11	19	17	7	M8x1.25	33.5	14	0.4
RSM-12M	12	12	22	19	7	M8x1.25	34.5	16	0.4
RSM-20M	20	15	31	25	7	M12x1.75	44.5	24	0.4

Dimensions in millimeters

Materials

Mount: 1215 Steel, Zinc Plated

Retaining Ring: Steel

Shim Spacers: Stainless Steel

Retaining ring (E-Clip) and 3 sizes of shim spacers supplied.