

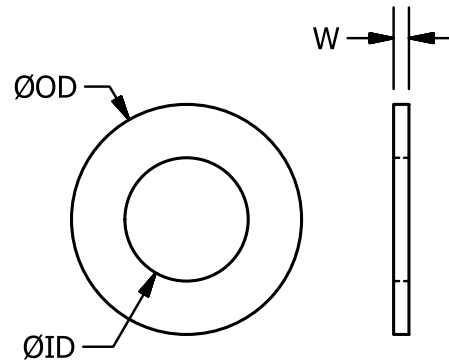
TBW

# COMPONENTS

## Thrust Washers

Inch

TBW



Carbon Steel Washer	Stainless Steel Washer	ID	OD	W
TBW-012C	TBW-012S	.128 +.005/-0.000	.437 +.000/-0.007	.050 ±.002
TBW-018C	TBW-018S	.191 +.004/-0.000	.499 +.000/-0.007	.050 ±.002
TBW-025C	TBW-025S	.253 +.005/-0.000	.562 +.000/-0.007	.050 ±.002
TBW-031C	TBW-031S	.316 +.005/-0.000	.624 +.000/-0.007	.050 ±.002
TBW-037C	TBW-037S	.378 +.005/-0.000	.812 +.000/-0.007	.062 ±.002
TBW-043C	TBW-043S	.441 +.005/-0.000	.874 +.000/-0.007	.062 ±.002
TBW-050C	TBW-050S	.503 +.005/-0.000	.937 +.000/-0.007	.062 ±.002
TBW-056C	TBW-056S	.566 +.005/-0.000	.999 +.000/-0.007	.062 ±.002
TBW-062C	TBW-062S	.628 +.007/-0.000	1.124 +.000/-0.009	.093 ±.003
TBW-068C	TBW-068S	.691 +.007/-0.000	1.187 +.000/-0.009	.093 ±.003
TBW-075C	TBW-075S	.753 +.007/-0.000	1.249 +.000/-0.009	.093 ±.003
TBW-081C	TBW-081S	.816 +.007/-0.000	1.312 +.000/-0.009	.093 ±.003
TBW-087C	TBW-087S	.878 +.007/-0.000	1.374 +.000/-0.009	.093 ±.003
TBW-093C	TBW-093S	.941 +.009/-0.000	1.562 +.000/-0.011	.125 ±.005
TBW-100C	TBW-100S	1.003 +.009/-0.000	1.624 +.000/-0.011	.125 ±.005
TBW-112C	TBW-112S	1.128 +.009/-0.000	1.749 +.000/-0.011	.125 ±.005
TBW-125C	TBW-125S	1.253 +.009/-0.000	1.874 +.000/-0.011	.125 ±.005
TBW-150C	TBW-150S	1.503 +.009/-0.000	2.124 +.000/-0.011	.125 ±.005
TBW-200C	TBW-200S	2.000 +.020/-0.000	3.000 +.000/-0.020	.188 ±.020
TBW-250C	TBW-250S	2.500 +.020/-0.000	3.500 +.000/-0.020	.188 ±.020
TBW-300C	TBW-300S	3.000 +.020/-0.000	4.000 +.000/-0.020	.188 ±.020
TBW-350C	TBW-350S	3.500 +.020/-0.000	4.500 +.000/-0.020	.188 ±.020
TBW-400C	TBW-400S	4.000 +.020/-0.000	5.000 +.000/-0.020	.188 ±.020
TBW-450C	TBW-450S	4.500 +.020/-0.000	5.500 +.000/-0.020	.188 ±.020
TBW-500C	TBW-500S	5.000 +.020/-0.000	6.000 +.000/-0.020	.188 ±.020

For bearing sets, including Ball + Ball Retainer, see Thrust Bearings

### Carbon Steel Washer

Washer: CR 1075 steel heat treated to RC 59-61

### Stainless Steel Washer

Washer: CR 410 stainless steel heat treated to RC 38-42

**ondrives.us**

☎ 1-888-260-7466  
📄 516-771-6444

💻 sales@ondrivesus.com  
🌐 www.ondrivesus.com

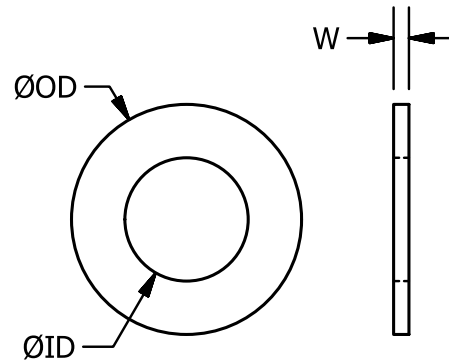
TBW

# COMPONENTS

## Thrust Washers

Metric

TBW



All dimensions in millimeters

Carbon Steel Washer	Stainless Steel Washer	ID	OD	W
TBW-04C	TBW-04S	4.01 +0.05/-0	9.04 +0/-0.10	1.27 ±0.05
TBW-05C	TBW-05S	5.08 +0.13/-0	11.96 +0/-0.18	1.27 ±0.05
TBW-06C	TBW-06S	6.07 +0.13/-0	13.97 +0/-0.18	1.27 ±0.05
TBW-07C	TBW-07S	7.06 +0.12/-0	16.97 +0/-0.18	1.27 ±0.05
TBW-08C	TBW-08S	8.08 +0.12/-0	15.96 +0/-0.16	1.27 ±0.05
TBW-10C	TBW-10S	10.06 +0.13/-0	20.96 +0/-0.18	1.57 ±0.06
TBW-12C	TBW-12S	12.06 +0.13/-0	23.98 +0/-0.18	1.57 ±0.06
TBW-16C	TBW-16S	16.07 +0.19/-0	27.97 +0/-0.23	2.36 ±0.08
TBW-19C	TBW-19S	19.08 +0.17/-0	31.98 +0/-0.23	2.36 ±0.08
TBW-25C	TBW-25S	25.07 +0.23/-0	40.97 +0/-0.28	3.18 ±0.13
TBW-28C	TBW-28S	28.07 +0.23/-0	43.97 +0/-0.28	3.18 ±0.13

For bearing sets, including Ball + Ball Retainer, see Thrust Bearings

### Carbon Steel Washer

Washer: CR 1075 steel heat treated to RC 59-61

### Stainless Steel Washer

Washer: CR 410 stainless steel heat treated to RC 38-42

**ondrives.us**

☎ 1-888-260-7466

📄 516-771-6444

💻 sales@ondrivesus.com

🌐 www.ondrivesus.com