

500
514

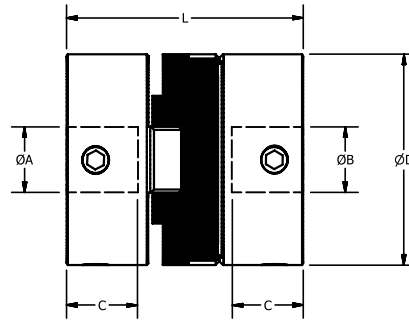
COUPLINGS

500
514

Standard Oldham Zero Backlash

Aluminum Hubs - Set Screw Style

Mechanical Fuse - Disc Will Break Allowing Hubs to Disconnect



Standard Coupler

Backlash-free up to 108turns
25%+ increased Torque option
Large misalignment capability

Std. Coupling	Peak Torque lb.in	Static Break Torque lb.in	ØD	Ang. Offset ±deg.	Max Radial Offset ±in.	Mass lb.*	Moment of inertia lb.in ² x 10 ⁻⁵ *	Set Scr.	L	C	ØH	Max Bore
500.06	0.5	6	0.25	1	0.008	0.006	27	M3	0.5	0.15	0.25	1/8"
500.09	1.8	18	0.38	1	0.008	0.009	60	M3	0.5	0.15	0.38	5mm
514H13	4.4	35	0.50	1.5	0.008	0.024	90	M3	0.63	0.17	0.50	1/4"
514H19	15	71	0.75	1.5	0.016	0.029	200	M5	1.02	0.37	0.75	8mm
514H25	35	115	1.00	3	0.016	0.068	860	M5	1.28	0.46	1.00	1/2"
514H33	80	465	1.31	3	0.016	0.148	3870	M6	1.65	0.59	1.31	16mm
514H41	150	500	1.63	3	0.020	0.313	10850	M6	2.00	0.70	1.63	20mm
514H50	265	840	1.97	3	0.020	0.459	25780	M8	2.35	0.81	1.97	1"
514H57	390	1325	2.25	3	0.020	0.796	42370	M8	3.07	1.12	2.25	30mm

Size	Available Bores																											
	Inch														Metric													
	1/8	3/16	1/4	5/16	3/8	1/2	5/8	3/4	7/8	1"	1-1/8	2	3	4	5	6	8	9	10	12	14	15	16	20	24	25	30	
06	
09	
13	
19	
25	
33	
41	
50	
57	
Code	16	19	24	27	31	36	41	47	50	53	55	11	14	18	20	22	28	30	32	35	38	40	42	48	51	52	56	

Coupling Part Number

Consists of base number plus two bore codes
Add required bore codes to end of part number
eg, 516H25.2431 (bored 1/4" x 3/8")

Materials

Hubs (size 06-13): Brass (blind bores .15 deep)

Hubs (size 19-57): Aluminum 2011 T8

Fasteners: Alloy Steel, Black Oiled

Disc: Acetal (Black)

Performance

Max speed: 3000 RPM, Max Angular Offset (@ 3000 RPM) Operating temperature range -20 to +60 deg.C

Additional Info

Backlash Free. Parallel out of line compensation.
Lubrication free. Compact and detachable.
Angular, radial and axial flexibility. Isolates vibration and ab-sorbs shock. No corrosion. Non-Magnetic. Low Inertia. Resonance dampening.
Electrical isolation between shafts>3kw. Boring out service available at extra cost. Keyways available in 7mm and larger bore sizes.

*Mass and Moment of Inertia for High Torque couplings is slightly higher.

Service Factor

Duty	Factor
Momentary	1
1 hr per day	2
3 hrs per day	4
6 hrs per day	6
12 hrs per day	8

Peak Torque, select a size where Peak Torque exceeds the application torque x service factor

ondrives.us

1-888-260-7466

516-771-6444

sales@ondrivesus.com

www.ondrivesus.com

514HT

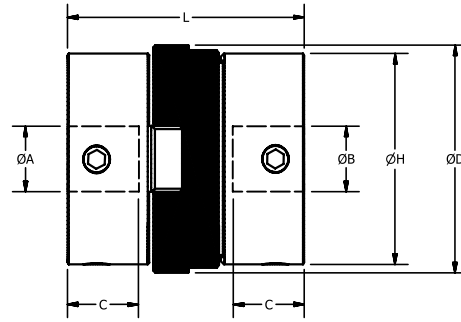
COUPLINGS

514HT

Hi-Torque Oldham Zero Backlash

Aluminum Hubs - Set Screw Style

25% Stronger than Standard Oldhams



High Torque Coupler

Slight torsional damping
Electrically isolating
Low inertia

High Torque Coupling	Peak Torque lb.in	Static Break Torque lb.in	ØD	Ang. Offset ± deg.	Max Radial Offset ± in.	Mass lb. *	Moment of inertia lb.in ² x 10 ⁻⁵ *	Set Scr.	L	C	ØH	Max Bore
514HT19	19	89	0.83	1.5	0.016	0.029	200	M5	1.02	0.37	0.75	8mm
514HT25	44	145	1.08	3	0.016	0.068	860	M5	1.28	0.46	1.00	1/2"
514HT33	100	580	1.39	3	0.016	0.148	3870	M6	1.65	0.59	1.31	16mm
514HT41	190	625	1.70	3	0.020	0.313	10850	M6	2.00	0.70	1.63	20mm
514HT50	330	1050	2.05	3	0.020	0.459	25780	M8	2.35	0.81	1.97	1"
514HT57	490	1650	2.33	3	0.020	0.796	42370	M8	3.07	1.12	2.25	30mm

Size	Available Bores																											
	Inch														Metric													
	1/8	3/16	1/4	5/16	3/8	1/2	5/8	3/4	7/8	1"	1-1/8	2	3	4	5	6	8	9	10	12	14	15	16	20	24	25	30	
13												
19												
25								
33			
41				
50					
57						
Code	16	19	24	27	31	36	41	47	50	53	55	11	14	18	20	22	28	30	32	35	38	40	42	48	51	52	56	

Coupling Part Number

Consists of base number plus two bore codes
Add required bore codes to end of part number
eg, 516H25.2431 (bored 1/4" x 3/8")

Materials

Hubs (size 06-13): Brass (blind bores .15 deep)

Hubs (size 19-57): Aluminum 2011 T8

Fasteners: Alloy Steel, Black Oiled

Disc: Acetal (Black)

Performance

Max speed: 3000 RPM, Max Angular Offset (@ 3000 RPM) Operating temperature range -20 to +60 deg.C

Additional Info

Backlash Free. Parallel out of line compensation.
Lubrication free. Compact and detachable.
Angular, radial and axial flexibility. Isolates vibration and ab-sorbs shock. No corrosion. Non-Magnetic. Low Inertia. Resonance dampening.
Electrical isolation between shafts >3kw. Boring out service available at extra cost. Keyways available in 7mm and larger bore sizes.

*Mass and Moment of Inertia for High Torque couplings is slightly higher.

Service Factor

Duty	Factor
Momentary	1
1 hr per day	2
3 hrs per day	4
6 hrs per day	6
12 hrs per day	8

Peak Torque, select a size where Peak Torque exceeds the application torque x service factor

ondrives.us

1-888-260-7466

516-771-6444

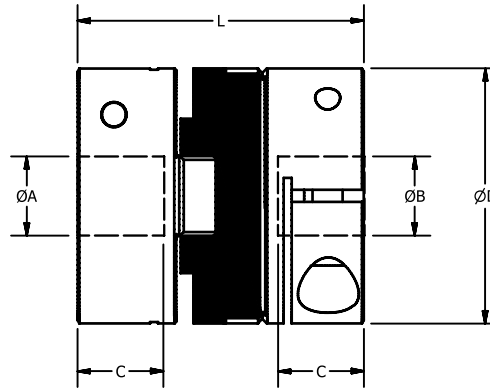
sales@ondrivesus.com

www.ondrivesus.com

Standard Oldham Zero Backlash

Aluminum Hubs - Clamp Style

Mechanical Fuse - Disc Will Break Allowing Hubs to Disconnect



Standard Coupler

Backlash-free up to 108turns
25%+ increased Torque option
Large misalignment capability

Std. Coupling Part Number	Peak Torque lb.in	Static Break Torque lb.in	ØD	Ang. Offset ± deg.	Max Radial Offset ± in.	Mass lb. *	Moment of inertia lb.in ² x 10 ⁻⁵ *	Cap Scr.	L	C	Max Bore
516H19	15	71	0.75	1.5	0.016	0.029	200	M2.5	1.02	0.28	8mm
516H25	35	115	1.00	3	0.016	0.068	860	M3	1.28	0.46	12mm
516H33	80	465	1.31	3	0.016	0.148	3870	M4	1.65	0.59	16mm
516H41	150	500	1.63	3	0.020	0.313	10850	M4	2.00	0.70	20mm
516H50	265	840	1.97	3	0.020	0.459	25780	M5	2.35	0.81	1"
516H57	390	1325	2.25	3	0.020	0.796	42370	M6	3.07	1.12	30mm

Size	Available Bores																							
	Inch								Metric															
	3/16	1/4	5/16	3/8	1/2	5/8	3/4	7/8	1	1-1/8	4	5	6	8	9	10	12	14	15	16	20	24	25	30
19										
25								
33						
41					
50			
57			
Code	19	24	27	31	36	41	47	50	53	55	18	20	22	28	30	32	35	38	40	42	48	51	52	56

Coupling Part Number

Consists of base number plus two bore codes
 Add required bore codes to end of part number eg, 516H25.2431 (bored 1/4" x 3/8")

Materials

Hubs (size 19-57): Aluminum 2011 T8
Fasteners: Alloy Steel, Black Oiled
Disc: Acetal (Black)

Performance

Max speed: 3000 RPM, Max Angular Offset (@ 3000 RPM)
 Operating temperature range -20 to +60 degC

Additional Info

Backlash Free. Parallel out of line compensation.
 Lubrication free. Compact and detachable.
 Angular, radial and axial flexibility. Isolates vibration and ab-sorbs shock. No corrosion. Non-Magnetic. Low Inertia. Resonance dampening.
 Electrical isolation between shafts >3kw. Boring out service available at extra cost. Keyways available in 7mm and larger bore sizes.

*Mass and Moment of Inertia for High Torque couplings is slightly higher.

Service Factor

Duty	Factor
Momentary	1
1 hr per day	2
3 hrs per day	4
6 hrs per day	6
12 hrs per day	8

Peak Torque, select a size where Peak Torque exceeds the application torque x service factor

516HT

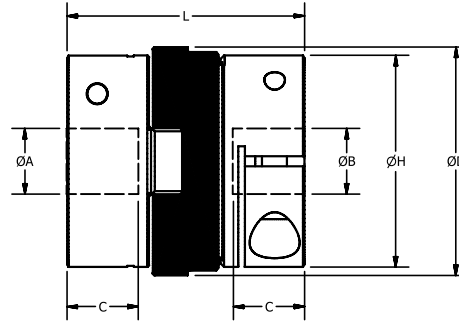
COUPLINGS

516HT

Hi-Torque Oldham Zero Backlash

Aluminum Hubs - Clamp Style

25% Stronger than Standard Oldhams



High Torque Coupler

Slight torsional damping
Electrically isolating
Low inertia

Hi Torq Coupling	Peak Torque lb.in	Static Break Torque lb.in	ØD	Ang. Offset ± deg.	Max Radial Offset ± in.	Mass lb. *	Moment of inertia lb.in ² x 10 ⁻⁵ *	Cap Scr.	L	C	ØH	Max Bore
516HT19	19	89	0.83	1.5	0.016	0.029	200	M2.5	1.02	0.28	0.79	8mm
516HT25	44	145	1.08	3	0.016	0.068	860	M3	1.28	0.46	1.00	12mm
516HT33	100	580	1.39	3	0.016	0.148	3870	M4	1.65	0.59	1.31	16mm
516HT41	190	625	1.70	3	0.020	0.313	10850	M4	2.00	0.70	1.63	20mm
516HT50	330	1050	2.05	3	0.020	0.459	25780	M5	2.35	0.81	1.97	1"
516HT57	490	1650	2.33	3	0.020	0.796	42370	M6	3.07	1.12	2.25	30mm

Size	Available Bores																								
	Inch								Metric																
	3/16	1/4	5/16	3/8	1/2	5/8	3/4	7/8	1	1-1/8	4	5	6	8	9	10	12	14	15	16	20	24	25	30	
19											
25										
33							
41						
50			
57				
Code	19	24	27	31	36	41	47	50	53	55	18	20	22	28	30	32	35	38	40	42	48	51	52	56	

Coupling Part Number

Consists of base number plus two bore codes
Add required bore codes to end of part number
eg, 516H25.2431 (bored 1/4" x 3/8")

Materials

Hubs (size 19-57): Aluminum 2011 T8

Fasteners: Alloy Steel, Black Oiled

Disc: Acetal (Black)

Performance

Max speed: 3000 RPM, Max Angular Offset (@ 3000 RPM) Operating temperature range -20 to +60 deg.C

Additional Info

Backlash Free. Parallel out of line compensation.
Lubrication free. Compact and detachable.
Angular, radial and axial flexibility. Isolates vibration and ab-sorbs shock. No corrosion. Non-Magnetic. Low Inertia. Resonance dampening.
Electrical isolation between shafts > 3kw. Boring out service available at extra cost. Keyways available in 7mm and larger bore sizes.

*Mass and Moment of Inertia for High Torque couplings is slightly higher.

Service Factor

Duty	Factor
Momentary	1
1 hr per day	2
3 hrs per day	4
6 hrs per day	6
12 hrs per day	8

Peak Torque, select a size where Peak Torque exceeds the application torque x service factor

ondrives.us

☎ 1-888-260-7466

📄 516-771-6444

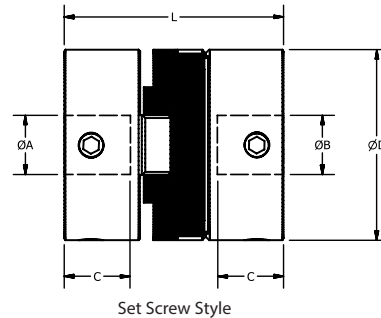
💻 sales@ondrivesus.com

🌐 www.ondrivesus.com

Standard Oldham Zero Backlash

Stainless Steel Hubs - Set Screw Style

Mechanical Fuse - Disc Will Break Allowing Hubs to Disconnect



Set Screw Style

Backlash-free up to 108turns
25%+ increased Torque option
Large misalignment capability

Slight torsional damping
Electrically isolating
Low inertia

Part Number	Max Bore ØB	ØD	L	C	Set Scr.	Ang. Offset ± deg.	Max Radial Offset ± in.	Static Break Torque lb.in	Peak Torque lb.in	Mass lb.	Moment of inertia lb.in ² x 10 ⁻⁵ *
864.13	.250"	0.50	0.63	0.21	M3	1.5	0.008	35	4.4	0.030	89
864.19	8mm	0.75	1.2	0.37	M4	3	0.016	70	15	0.100	750
864.25	12mm	1.00	1.28	0.46	M5	3	0.016	115	35	0.167	2003
864.33	16mm	1.31	1.65	0.60	M6	3	0.016	465	80	0.313	6335
864.41	20mm	1.63	2.00	0.70	M6	3	0.020	500	150	0.645	22268
864.50	1"	1.97	2.35	0.81	M8	3	0.020	840	265	1.125	57830

Size	Available Bores																							
	Inch										Metric													
	1/8	3/16	1/4	5/16	3/8	1/2	5/8	3/4	7/8	1"	3	4	5	6	8	9	10	12	14	15	16	20	24	25
13											
19											
25		
33			
41				
50				
CODE	16	19	24	27	31	36	41	47	50	53	14	18	20	22	28	30	32	35	38	40	42	48	51	52

Coupling Part Number

Consists of base number plus two bore codes
 Add required bore codes to end of part number
 eg, 864.25.2431 (bored 1/4" x 3/8")

Materials

Hubs: Stainless Steel 303
Fasteners: Stainless Steel 18-8
Disc: Acetal (Black)

Performance

Max speed: 3000 RPM, Max Angular Offset (@ 3000 RPM) Operating temperature range -20 to +60 deg.C

Additional Info

Backlash Free. Parallel out of line compensation.
 Lubrication free. Compact and detachable.
 Angular, radial and axial flexibility. Isolates vibration and ab-sorbs shock. No corrosion. Non-Magnetic. Low Inertia. Resonance dampening.
 Electrical isolation between shafts >3kw. Boring out service available at extra cost. Keyways available in 7mm and larger bore sizes.

*Mass and Moment of Inertia for High Torque couplings is slightly higher.

Service Factor

Duty	Factor
Momentary	1
1 hr per day	2
3 hrs per day	4
6 hrs per day	6
12 hrs per day	8

Peak Torque, select a size where Peak Torque exceeds the application torque x service factor

864HT

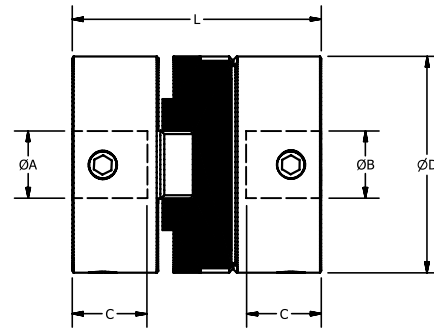
COUPLINGS

864HT

Hi-Torque Oldham Zero Backlash

Stainless Steel Hubs - Set Screw Style

25% Stronger than Standard Oldhams



Set Screw Style

Backlash-free up to 10⁸ turns
25%+ increased Torque option
Large misalignment capability

Slight torsional damping
Electrically isolating
Low inertia

Part Number	Max Bore ØB	ØD	L	C	Cap Scr.	Ang. Offset ± deg.	Max Radial Offset + in.	Static Break Torque lb.in	Mass lb.	Peak Torque Lb.In.	Moment of inertia lb.in ² x 10 ⁻⁵ *
High Torque											
864HT19	8mm	0.83	1.02	0.37	M4	3	0.016	89	0.101	19	770
864HT25	12mm	1.08	1.28	0.46	M5	3	0.016	145	0.171	44	2063
864HT33	16mm	1.39	1.65	0.60	M6	3	0.016	580	0.320	100	6605
864HT41	20mm	1.70	2.00	0.70	M6	3	0.020	625	0.659	190	23078
864HT50	1"	2.05	2.35	0.81	M8	3	0.020	1050	1.154	330	61690

Size	Available Bores																							
	Inch									Metric														
	3/16	1/4	5/16	3/8	1/2	5/8	3/4	7/8	1"	3	4	5	6	8	9	10	12	14	15	16	20	24	25	
19											
25					
33		
41			
50			
CODE	19	24	27	31	36	41	47	50	53	14	18	20	22	28	30	32	35	38	40	42	48	51	52	

Coupling Part Number

Consists of base number plus two bore codes
 Add required bore codes to end of part number
 eg, 864.25.2431 (bored 1/4" x 3/8")

Materials

Hubs: Stainless Steel 303

Fasteners: Stainless Steel 18-8

Disc: Acetal (Black)

Performance

Max speed: 3000 RPM, Max Angular Offset (@ 3000 RPM) Operating temperature range -20 to +60 deg.C

Additional Info

Backlash Free. Parallel out of line compensation.
 Lubrication free. Compact and detachable.
 Angular, radial and axial flexibility. Isolates vibration and ab-sorbs shock. No corrosion. Non-Magnetic. Low Inertia. Resonance dampening.
 Electrical isolation between shafts > 3kw. Boring out service available at extra cost. Keyways available in 7mm and larger bore sizes.

*Mass and Moment of Inertia for High Torque couplings is slightly higher.

Service Factor

Duty	Factor
Momentary	1
1 hr per day	2
3 hrs per day	4
6 hrs per day	6
12 hrs per day	8

Peak Torque, select a size where Peak Torque exceeds the application torque x service factor

ondrives.us

1-888-260-7466

516-771-6444

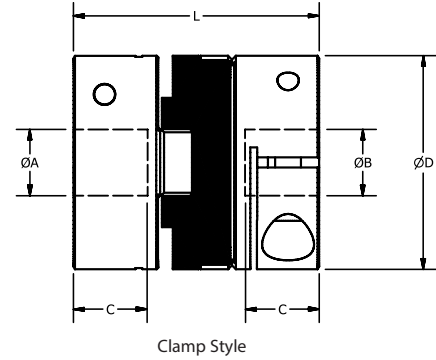
sales@ondrivesus.com

www.ondrivesus.com

Standard Oldham Zero Backlash

Stainless Steel Hubs - Clamp Style

Mechanical Fuse - Disc Will Break Allowing Hubs to Disconnect



Backlash-free up to 108turns
25%+ increased Torque option
Large misalignment capability

Slight torsional damping
Electrically isolating
Low inertia

Part Number	Max Bore ØB	ØD	L	C	Cap Scr.	Ang. Offset ± deg.	Max Radial Offset ± in.	Static Break Torque lb.in	Peak Torque lb.in	Mass lb.	Moment of inertia lb.in ² x 10 ⁻⁵ *
Standard Torque											
Clamp											
866.19	8mm	0.75	1.2	0.37	M2.5	3	0.016	71	15	0.100	750
866.25	12mm	1.00	1.28	0.46	M3	3	0.016	115	35	0.167	2003
866.33	16mm	1.31	1.65	0.60	M4	3	0.016	465	80	0.313	6335
866.41	20mm	1.63	2.00	0.70	M4	3	0.020	500	150	0.645	22268
866.50	1"	1.97	2.35	0.81	M5	3	0.020	840	265	1.125	57830

Size	Available Bores																							
	Inch									Metric														
	3/16	1/4	5/16	3/8	1/2	5/8	3/4	7/8	1"	3	4	5	6	8	9	10	12	14	15	16	20	24	25	
19											
25								
33						
41						
50			
CODE	19	24	27	31	36	41	47	50	53	14	18	20	22	28	30	32	35	38	40	42	48	51	52	

Coupling Part Number

Consists of base number plus two bore codes
 Add required bore codes to end of part number
 eg, 864.25.2431 (bored 1/4" x 3/8")

Materials

Hubs: Stainless Steel 303
Fasteners: Stainless Steel 18-8
Disc: Acetal (Black)

Performance

Max speed: 3000 RPM, Max Angular Offset (@ 3000 RPM) Operating temperature range -20 to +60 deg.C

Additional Info

Backlash Free. Parallel out of line compensation.
 Lubrication free. Compact and detachable.
 Angular, radial and axial flexibility. Isolates vibration and ab-sorbs shock. No corrosion. Non-Magnetic. Low Inertia. Resonance dampening.
 Electrical isolation between shafts >3kw. Boring out service available at extra cost. Keyways available in 7mm and larger bore sizes.

*Mass and Moment of Inertia for High Torque couplings is slightly higher.

Service Factor

Duty	Factor
Momentary	1
1 hr per day	2
3 hrs per day	4
6 hrs per day	6
12 hrs per day	8

Peak Torque, select a size where Peak Torque exceeds the application torque x service factor

866HT

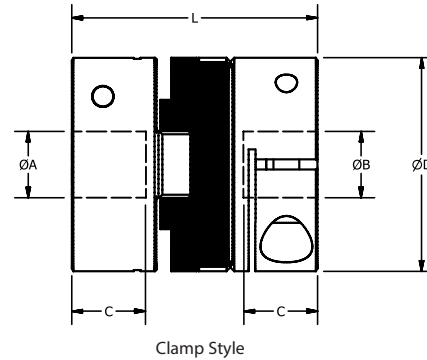
COUPLINGS

866HT

Hi-Torque Oldham Zero Backlash

Stainless Steel Hubs - Clamp Style

25% Stronger than Standard Oldhams



Clamp Style

Backlash-free up to 10⁸ turns
25%+ increased Torque option
Large misalignment capability

Slight torsional damping
Electrically isolating
Low inertia

Part Number	Max Bore ØB	ØD	L	C	Cap Scr.	Ang. Offset ± deg.	Max Radial Offset ± in.	Static Break Torque lb.in	Mass lb.	Peak Torque Lb.In.	Moment of inertia lb.in ² x 10 ⁻⁵ *
866HT19	8mm	0.83	1.02	0.37	M2.5	3	0.016	89	0.101	19	770
866HT25	12mm	1.08	1.28	0.46	M3	3	0.016	145	0.171	44	2063
866HT33	16mm	1.39	1.65	0.60	M4	3	0.016	580	0.320	100	6605
866HT41	20mm	1.70	2.00	0.70	M4	3	0.020	625	0.659	190	23078
866HT50	1"	2.05	2.35	0.81	M5	3	0.020	1050	1.154	330	61690

Size	Available Bores																							
	Inch									Metric														
	3/16	1/4	5/16	3/8	1/2	5/8	3/4	7/8	1"	3	4	5	6	8	9	10	12	14	15	16	20	24	25	
19											
25								
33						
41						
50			
CODE	19	24	27	31	36	41	47	50	53	14	18	20	22	28	30	32	35	38	40	42	48	51	52	

Coupling Part Number

Consists of base number plus two bore codes
 Add required bore codes to end of part number
 eg, 864.25.2431 (bored 1/4" x 3/8")

Materials

Hubs: Stainless Steel 303

Fasteners: Stainless Steel 18-8

Disc: Acetal (Black)

Performance

Max speed: 3000 RPM, Max Angular Offset (@ 3000 RPM) Operating temperature range -20 to +60 deg.C

Additional Info

Backlash Free. Parallel out of line compensation.

Lubrication free. Compact and detachable.

Angular, radial and axial flexibility. Isolates vibration and ab-sorbs shock. No corrosion. Non-Magnetic. Low Inertia. Resonance dampening.

Electrical isolation between shafts > 3kw. Boring out service available at extra cost. Keyways available in 7mm and larger bore sizes.

*Mass and Moment of Inertia for High Torque couplings is slightly higher.

Service Factor

Duty	Factor
Momentary	1
1 hr per day	2
3 hrs per day	4
6 hrs per day	6
12 hrs per day	8

Peak Torque, select a size where Peak Torque exceeds the application torque x service factor

ondrives.us

1-888-260-7466

516-771-6444

sales@ondrivesus.com

www.ondrivesus.com