

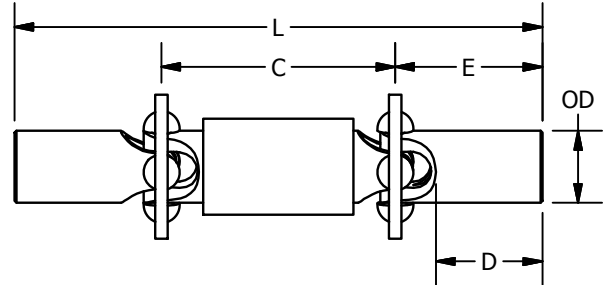
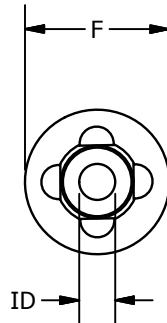
ZDT

COUPLINGS

Zero Backlash Telescoping Universal Joints

Torques to 600 inch-lbs

ZDT



Part Number	OD (in)	ID (+.001 / -.000)		D	E	C	L	F	Torque in-lbs
		Standard Bore Size	Optional Bore Size						
ZDT3	3/8	.1875	.250	3/8	3/4	1-1/4	2-3/4	3/4	16
ZDT4	1/2	.250	.3125	7/16	3/4	1-5/8	3	15/16	20
ZDT6	3/4	.375	.4375	5/8	1	2-1/4	4-1/4	1-3/8	30
ZDT8	1	.500	.625 .750	7/8	1-5/16	2-1/2	5-1/8	1-7/8	75
ZDT8B	1	.500	.625 .750	7/8	1-5/16	2-1/2	5-1/4	1-7/8	300
ZDT8C	1	.500	.625 .750	7/8	1-5/16	2-1/2	5-1/4	1-7/8	450
ZDT12	1-1/2	.750	1.000	1-1/2	2-1/4	3-1/4	7-3/4	2-1/2	600

Materials

Body: 303 Stainless, 304 and 316 special order

Balls: Precision grade 440 Stainless

Lubrication: Sealed in solid film plus oil suspension

Temperature: 0 to 100° C (-40° C and other temperature ranges on request)

Torque rating: Conditions are for static in-line loading. Maximum load being one which causes the joint to yield.

Operating Angle: Up to 60° for ZDT3, 4, 6

Up to 30° for ZDT8

Up to 20° for ZDT12

Maximum RPM: 3600

These unique zero backlash telescoping universal joints use precision balls, burnished custom spherical sockets and accurately sized components so when assembled an elastic preload will eliminate clearance between bearing surfaces.

Zero Backlash in a telescoping universal joint!

Instrumentation quality

Up to 15° operating angle for zero backlash

15 to 30° operating angle for zero backlash

per joint at 50% torque

Bores from 3/16" to 1", 5 to 25mm

Quick delivery in inch and metric sizes

Notes

1. Closed dimension for standard 1/4" of travel. Travel up to 6" on request
2. Where high torsional rigidity is required, ZA8C and ZD8C are recommended
3. Where high torsional rigidity is required, ZDT8C is recommended

Single and Double Universal Joints

available see ZA/ZD data sheet

ondrives.us

☎ 1-888-260-7466

📄 516-771-6444

💻 sales@ondrivesus.com

🌐 www.ondrivesus.com