

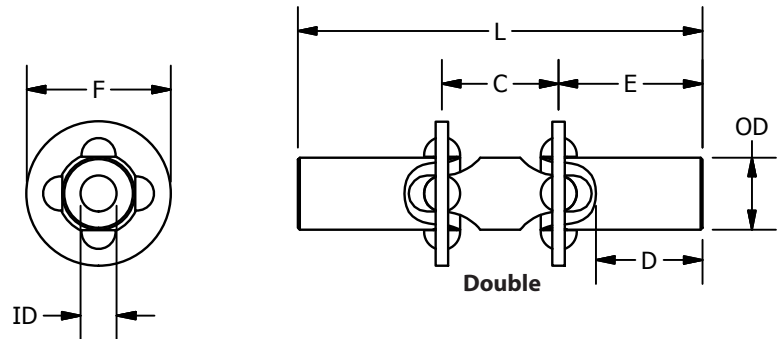
ZD

COUPLINGS

ZD

Zero Backlash Universal Joints Double Joint

Torques to 600 inch-lbs



Zero Backlash in a universal joint!

Instrumentation quality

Up to 20° operating angle for zero backlash

20 to 60° operating angle for zero backlash

per joint at 50% torque

Bores from 3/16" to 1", 5 to 25mm

Quick delivery in inch and metric sizes

Materials

Body: 303 Stainless, 304 and 316 special order

Balls: Precision grade 440 Stainless

Lubrication: Sealed in solid film plus oil suspension

Temperature: 0 to 100° C (other temperature ranges on request)

Torque rating: Conditions are for static in-line loading. Maximum load being one which causes the joint to yield.

Operating Angle: 20° per single joint for sizes up to ZA8 and ZD8 at 2000 rpm
10° per single joint for size ZA12 and ZD12 at 2000 rpm

Maximum RPM: 3600

These unique zero backlash universal joints use precision balls, burnished custom spherical sockets and accurately sized components so when assembled an elastic preload will eliminate clearance between bearing surfaces.

Telescoping Double Universal Joints

available see ZDT data sheet.

Part Number	OD (in)	ID (+.001 / -.000)		D	E	C	L	F	Torque in-lbs
		Standard Bore Size	Optional Bore Size						
ZD3	3/8	.1875	.250	3/8	3/4	5/8	1-1/2	3/4	16
ZD4	1/2	.250	.3125	7/16	3/4	25/32	2-13/32	15/16	20
ZD6	3/4	.375	.4375	5/8	1	7/8	2-7/8	1-3/8	30
ZD8	1	.500	.625 .750	7/8	1-5/16	1-1/4	3-7/8	1-7/8	75
ZD8B	1	.500	.625 .750	7/8	1-5/16	1-1/4	4	1-7/8	300
ZD8C	1	.500	.625 .750	7/8	1-5/16	1-1/4	4	1-7/8	450
ZD12	1-1/2	.750	1.000	1-1/2	2-1/4	2-1/4	6-3/4	2-1/2	600

Notes

- For higher peak torque or transient shock loads, ZA8B and ZD8B are recommended
- Where high torsional rigidity is required, ZA8C and ZD8C are recommended

ondrives.us

☎ 1-888-260-7466

📄 516-771-6444

💻 sales@ondrivesus.com

🌐 www.ondrivesus.com