

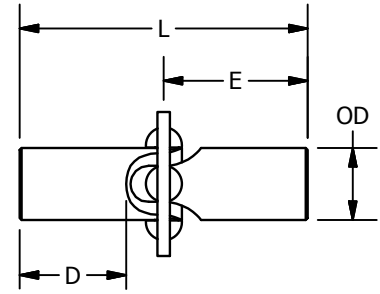
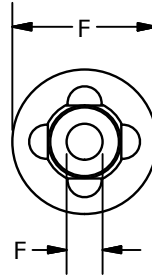
ZA

COUPLINGS

ZA

Zero Backlash Universal Joints Single Joint

Torques to 600 inch-lbs



Single

Zero Backlash in a universal joint!

Instrumentation quality

Up to 10° operating angle for zero backlash

10 to 30° operating angle for zero backlash

per joint at 50% torque

Bores from 3/16" to 1", 5 to 25mm

Quick delivery in inch and metric sizes

Materials

Body: 303 Stainless, 304 and 316 special order

Balls: Precision grade 440 Stainless

Lubrication: Sealed in solid film plus oil suspension

Temperature: 0 to 100° C (other temperature ranges on request)

Torque rating: Conditions are for static in-line loading. Maximum load being one which causes the joint to yield.

Operating Angle: 20° per single joint for sizes up to ZA8 and ZD8 at 2000 rpm
10° per single joint for size ZA12 and ZD12 at 2000 rpm

Maximum RPM: 3600

These unique zero backlash universal joints use precision balls, burnished custom spherical sockets and accurately sized components so when assembled an elastic preload will eliminate clearance between bearing surfaces.

***Telescoping Double Universal Joints**
available see ZDT data sheet.

Part Number	OD (in)	ID (+.001 / -.000)		D	E	L	F	Torque in-lbs
		Standard Bore Size	Optional Bore Size					
ZA3	3/8	.1875	.250	3/8	3/4	1-1/2	3/4	16
ZA4	1/2	.250	.3125	7/16	3/4	1-5/8	15/16	20
ZA6	3/4	.375	.4375	5/8	1	2	1-3/8	30
ZA8	1	.500	.625 .750	7/8	1-5/16	2-5/8	1-7/8	75
ZA8B	1	.500	.625 .750	7/8	1-5/16	2-3/4	1-7/8	300
ZA8C	1	.500	.625 .750	7/8	1-5/16	2-3/4	1-7/8	450
ZA12	1-1/2	.750	1.000	1-1/2	2-1/4	4-1/2	2-1/2	600

Notes

1. For higher peak torque or transient shock loads, ZA8B and ZD8B are recommended
2. Where high torsional rigidity is required, ZA8C and ZD8C are recommended