

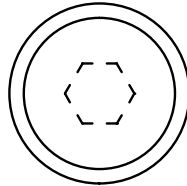
SH3  
SH4

# FASTENERS

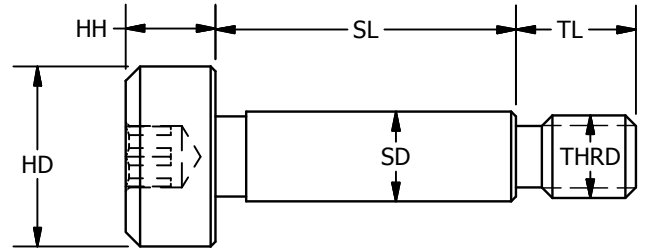
## Precision Shoulder Screws

Hex Socket Head - Inch Sizes

SH3  
SH4



Hex Socket Head



303 SS - Rockwell B83  
416 SS - Rockwell C26-32

Part Number		-.001 SD	+.002 SL	±.005 HD	±.005 HH	TH	±.005 TL	HX
303SS	416SS							
SH3-0909	SH4-0909	0.0935	0.0943	3/16	3/32	#2-56	1/8	1/16
SH3-0912	SH4-0912	0.0935	0.1255	3/16	3/32	#2-56	1/8	1/16
SH3-0918	SH4-0918	0.0935	0.188	3/16	3/32	#2-56	1/8	1/16
SH3-0925	SH4-0925	0.0935	0.2505	3/16	3/32	#2-56	1/8	1/16
SH3-0931	SH4-0931	0.0935	0.313	3/16	3/32	#2-56	1/8	1/16
SH3-0937	SH4-0937	0.0935	0.3755	3/16	3/32	#2-56	1/8	1/16
SH3-0950	SH4-0950	0.0935	0.5005	3/16	3/32	#2-56	1/8	1/16
SH3-1212	SH4-1212	0.1245	0.1255	1/4	1/8	#4-40	5/32	5/64
SH3-1218	SH4-1218	0.1245	0.188	1/4	1/8	#4-40	5/32	5/64
SH3-1225	SH4-1225	0.1245	0.2505	1/4	1/8	#4-40	5/32	5/64
SH3-1231	SH4-1231	0.1245	0.313	1/4	1/8	#4-40	5/32	5/64
SH3-1237	SH4-1237	0.1245	0.3755	1/4	1/8	#4-40	5/32	5/64
SH3-1250	SH4-1250	0.1245	0.5005	1/4	1/8	#4-40	5/32	5/64
SH3-1262	SH4-1262	0.1245	0.6255	1/4	1/8	#4-40	5/32	5/64
SH3-1275	SH4-1275	0.1245	0.7505	1/4	1/8	#4-40	5/32	5/64
SH3-12100	SH4-12100	0.1245	1.0005	1/4	1/8	#4-40	5/32	5/64
SH3-1512	SH4-1512	0.1557	0.1255	9/32	1/8	#6-32	3/16	3/32
SH3-1518	SH4-1518	0.1557	0.188	9/32	1/8	#6-32	3/16	3/32
SH3-1525	SH4-1525	0.1557	0.2505	9/32	1/8	#6-32	3/16	3/32
SH3-1531	SH4-1531	0.1557	0.313	9/32	1/8	#6-32	3/16	3/32
SH3-1537	SH4-1537	0.1557	0.3755	9/32	1/8	#6-32	3/16	3/32
SH3-1543	SH4-1543	0.1557	0.438	9/32	1/8	#6-32	3/16	3/32
SH3-1550	SH4-1550	0.1557	0.5005	9/32	1/8	#6-32	3/16	3/32
SH3-1562	SH4-1562	0.1557	0.6255	9/32	1/8	#6-32	3/16	3/32
SH3-1575	SH4-1575	0.1557	0.7505	9/32	1/8	#6-32	3/16	3/32
SH3-15100	SH4-15100	0.1557	1.0005	9/32	1/8	#6-32	3/16	3/32
SH3-1812	SH4-1812	0.187	0.1255	5/16	5/32	#8-32	3/16	3/32
SH3-1815	SH4-1815	0.187	0.1565	5/16	5/32	#8-32	3/16	3/32
SH3-1818	SH4-1818	0.187	0.188	5/16	5/32	#8-32	3/16	3/32
SH3-1825	SH4-1825	0.187	0.2505	5/16	5/32	#8-32	3/16	3/32
SH3-1831	SH4-1831	0.187	0.313	5/16	5/32	#8-32	3/16	3/32
SH3-1837	SH4-1837	0.187	0.3755	5/16	5/32	#8-32	3/16	3/32
SH3-1843	SH4-1843	0.187	0.438	5/16	5/32	#8-32	3/16	3/32
SH3-1850	SH4-1850	0.187	0.5005	5/16	5/32	#8-32	3/16	3/32
SH3-1862	SH4-1862	0.187	0.6255	5/16	5/32	#8-32	3/16	3/32
SH3-1875	SH4-1875	0.187	0.7505	5/16	5/32	#8-32	3/16	3/32
SH3-1887	SH4-1887	0.187	0.8755	5/16	5/32	#8-32	3/16	3/32
SH3-18100	SH4-18100	0.187	1.0005	5/16	5/32	#8-32	3/16	3/32
SH3-18125	SH4-18125	0.187	1.2505	5/16	5/32	#8-32	3/16	3/32
SH3-18137	SH4-18137	0.187	1.3755	5/16	5/32	#8-32	3/16	3/32
SH3-18150	SH4-18150	0.187	1.5005	5/16	5/32	#8-32	3/16	3/32

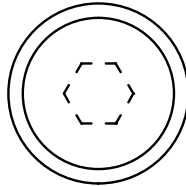
**SH3**  
**SH4**

# FASTENERS

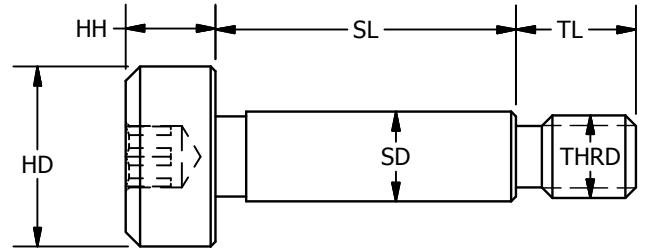
## Precision Shoulder Screws

Hex Socket Head - Inch Sizes

**SH3**  
**SH4**



Hex Socket Head



303 SS - Rockwell B83  
416 SS - Rockwell C26-32

Part Number		-.001 SD	+.002 SL	±.005 HD	±.005 HH	TH	±.005 TL	HX
303SS	416SS							
SH3-2512	SH4-2512	0.2495	0.1255	3/8	3/16	#10-32	1/4	1/8
SH3-2518	SH4-2518	0.2495	0.188	3/8	3/16	#10-32	1/4	1/8
SH3-2525	SH4-2525	0.2495	0.2505	3/8	3/16	#10-32	1/4	1/8
SH3-2531	SH4-2531	0.2495	0.313	3/8	3/16	#10-32	1/4	1/8
SH3-2537	SH4-2537	0.2495	0.3755	3/8	3/16	#10-32	1/4	1/8
SH3-2550	SH4-2550	0.2495	0.5005	3/8	3/16	#10-32	1/4	1/8
SH3-2556	SH4-2556	0.2495	0.563	3/8	3/16	#10-32	1/4	1/8
SH3-2562	SH4-2562	0.2495	0.6255	3/8	3/16	#10-32	1/4	1/8
SH3-2575	SH4-2575	0.2495	0.7505	3/8	3/16	#10-32	1/4	1/8
SH3-2587	SH4-2587	0.2495	0.8755	3/8	3/16	#10-32	1/4	1/8
SH3-2510	SH4-2510	0.2495	1.0005	3/8	3/16	#10-32	1/4	1/8
SH3-25125	SH4-25125	0.2495	1.2505	3/8	3/16	#10-32	1/4	1/8
SH3-25150	SH4-25150	0.2495	1.5005	3/8	3/16	#10-32	1/4	1/8
SH3-3125	SH4-3125	0.312	0.2505	1/2	7/32	1/4-20	7/16	5/32
SH3-3131	SH4-3131	0.312	0.313	1/2	7/32	1/4-20	7/16	5/32
SH3-3137	SH4-3137	0.312	0.3755	1/2	7/32	1/4-20	7/16	5/32
SH3-3150	SH4-3150	0.312	0.5005	1/2	7/32	1/4-20	7/16	5/32
SH3-3162	SH4-3162	0.312	0.6255	1/2	7/32	1/4-20	7/16	5/32
SH3-3175	SH4-3175	0.312	0.7505	1/2	7/32	1/4-20	7/16	5/32
SH3-3187	SH4-3187	0.312	0.8755	1/2	7/32	1/4-20	7/16	5/32
SH3-31100	SH4-31100	0.312	1.0005	1/2	7/32	1/4-20	7/16	5/32
SH3-3731A	SH4-3731A	0.3745	0.313	1/2	7/32	1/4-20	7/16	5/32
SH3-3737A	SH4-3737A	0.3745	0.3755	1/2	7/32	1/4-20	7/16	5/32
SH3-3750A	SH4-3750A	0.3745	0.5005	1/2	7/32	1/4-20	7/16	5/32
SH3-3762A	SH4-3762A	0.3745	0.6255	1/2	7/32	1/4-20	7/16	5/32
SH3-3731	SH4-3731	0.3745	0.313	9/16	1/4	5/16-18	1/2	3/16
SH3-3737	SH4-3737	0.3745	0.3755	9/16	1/4	5/16-18	1/2	3/16
SH3-3750	SH4-3750	0.3745	0.5005	9/16	1/4	5/16-18	1/2	3/16
SH3-3762	SH4-3762	0.3745	0.6255	9/16	1/4	5/16-18	1/2	3/16
SH3-3775	SH4-3775	0.3745	0.7505	9/16	1/4	5/16-18	1/2	3/16
SH3-37100	SH4-37100	0.3745	1.0005	9/16	1/4	5/16-18	1/2	3/16
SH3-37125	SH4-37125	0.3745	1.2505	9/16	1/4	5/16-18	1/2	3/16
SH3-37150	SH4-37150	0.3745	1.5005	9/16	1/4	5/16-18	1/2	3/16
SH3-5031	SH4-5031	0.4995	0.313	3/4	5/16	3/8-16	5/8	1/4
SH3-5050	SH4-5050	0.4995	0.5005	3/4	5/16	3/8-16	5/8	1/4
SH3-5062	SH4-5062	0.4995	0.6255	3/4	5/16	3/8-16	5/8	1/4
SH3-5075	SH4-5075	0.4995	0.7505	3/4	5/16	3/8-16	5/8	1/4
SH3-50100	SH4-50100	0.4995	1.0005	3/4	5/16	3/8-16	5/8	1/4

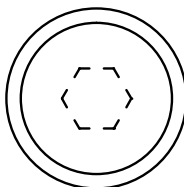
**SHM3**  
**SHM4**

# FASTENERS

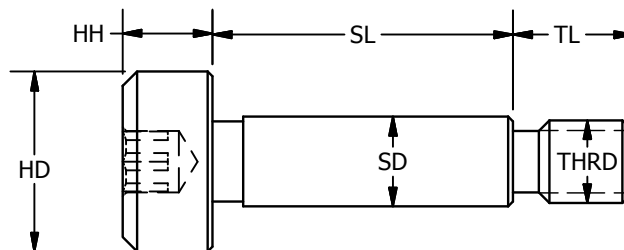
## Precision Shoulder Screws

Hex Socket Head - Metric Sizes

**SHM3**  
**SHM4**



Hex Socket Head



303 SS - Rockwell B83  
416 SS - Rockwell C26-32

Part Number		-.025 SD	+.050 SL	±.127 HD	±.127 HH	TH	±.127 TL	HX
303SS	416SS							
SHM3-43	SHM4-43	3.987	3.013	6	3	M3x0.5	4	2
SHM3-44	SHM4-44	3.987	4.013	6	3	M3x0.5	4	2
SHM3-45	SHM4-45	3.987	5.013	6	3	M3x0.5	4	2
SHM3-46	SHM4-46	3.987	6.013	6	3	M3x0.5	4	2
SHM3-47	SHM4-47	3.987	7.013	6	3	M3x0.5	4	2
SHM3-48	SHM4-48	3.987	8.013	6	3	M3x0.5	4	2
SHM3-410	SHM4-410	3.987	10.013	6	3	M3x0.5	4	2
SHM3-412	SHM4-412	3.987	12.013	6	3	M3x0.5	4	2
SHM3-416	SHM4-416	3.987	16.013	6	3	M3x0.5	4	2
SHM3-420	SHM4-420	3.987	20.013	6	3	M3x0.5	4	2
SHM3-425	SHM4-425	3.987	25.013	6	3	M3x0.5	4	2
SHM3-430	SHM4-430	3.987	30.013	6	3	M3x0.5	4	2
SHM3-54	SHM4-54	4.987	4.013	8	4	M4x0.7	5	2.5
SHM3-55	SHM4-55	4.987	5.013	8	4	M4x0.7	5	2.5
SHM3-56	SHM4-56	4.987	6.013	8	4	M4x0.7	5	2.5
SHM3-57	SHM4-57	4.987	7.013	8	4	M4x0.7	5	2.5
SHM3-58	SHM4-58	4.987	8.013	8	4	M4x0.7	5	2.5
SHM3-59	SHM4-59	4.987	9.013	8	4	M4x0.7	5	2.5
SHM3-510	SHM4-510	4.987	10.013	8	4	M4x0.7	5	2.5
SHM3-512	SHM4-512	4.987	12.013	8	4	M4x0.7	5	2.5
SHM3-514	SHM4-514	4.987	14.013	8	4	M4x0.7	5	2.5
SHM3-516	SHM4-516	4.987	16.013	8	4	M4x0.7	5	2.5
SHM3-520	SHM4-520	4.987	20.013	8	4	M4x0.7	5	2.5
SHM3-521	SHM4-521	4.987	21.013	8	4	M4x0.7	5	2.5
SHM3-525	SHM4-525	4.987	25.013	8	4	M4x0.7	5	2.5
SHM3-526	SHM4-526	4.987	26.013	8	4	M4x0.7	5	2.5
SHM3-530	SHM4-530	4.987	30.013	8	4	M4x0.7	5	2.5
SHM3-64	SHM4-64	5.987	4.013	10	5	M5x0.8	6	3
SHM3-65	SHM4-65	5.987	5.013	10	5	M5x0.8	6	3
SHM3-66	SHM4-66	5.987	6.013	10	5	M5x0.8	6	3
SHM3-68	SHM4-68	5.987	8.013	10	5	M5x0.8	6	3
SHM3-69	SHM4-69	5.987	9.013	10	5	M5x0.8	6	3
SHM3-610	SHM4-610	5.987	10.013	10	5	M5x0.8	6	3
SHM3-612	SHM4-612	5.987	12.013	10	5	M5x0.8	6	3
SHM3-614	SHM4-614	5.987	14.013	10	5	M5x0.8	6	3
SHM3-615	SHM4-615	5.987	15.013	10	5	M5x0.8	6	3
SHM3-616	SHM4-616	5.987	16.013	10	5	M5x0.8	6	3
SHM3-620	SHM4-620	5.987	20.013	10	5	M5x0.8	6	3
SHM3-625	SHM4-625	5.987	25.013	10	5	M5x0.8	6	3
SHM3-630	SHM4-630	5.987	30.013	10	5	M5x0.8	6	3

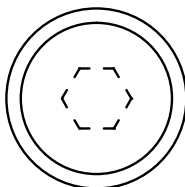
**SHM3**  
**SHM4**

# FASTENERS

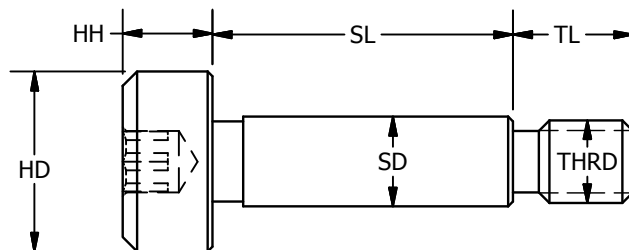
## Precision Shoulder Screws

Hex Socket Head - Metric Sizes

**SHM3**  
**SHM4**



Hex Socket Head



303 SS - Rockwell B83  
416 SS - Rockwell C26-32

Part Number		-.025 SD	+.050 SL	±.127 HD	±.127 HH	TH	±.127 TL	HX
303SS	416SS							
SHM3-86	SHM4-86	7.987	6.013	12	6	M6x1	11	4
SHM3-88	SHM4-88	7.987	8.013	12	6	M6x1	11	4
SHM3-810	SHM4-810	7.987	10.013	12	6	M6x1	11	4
SHM3-812	SHM4-812	7.987	12.013	12	6	M6x1	11	4
SHM3-814	SHM4-814	7.987	14.013	12	6	M6x1	11	4
SHM3-816	SHM4-816	7.987	16.013	12	6	M6x1	11	4
SHM3-820	SHM4-820	7.987	20.013	12	6	M6x1	11	4
SHM3-825	SHM4-825	7.987	25.013	12	6	M6x1	11	4
SHM3-830	SHM4-830	7.987	30.013	12	6	M6x1	11	4
SHM3-840	SHM4-840	7.987	40.013	12	6	M6x1	11	4
SHM3-860	SHM4-860	7.987	60.013	12	6	M6x1	11	4
SHM3-104A	SHM4-104A	9.987	4.013	12	6	M6x1	11	4
SHM3-108A	SHM4-108A	9.987	8.013	12	6	M6x1	11	4
SHM3-1010A	SHM4-1010A	9.987	10.013	12	6	M6x1	11	4
SHM3-1012A	SHM4-1012A	9.987	12.013	12	6	M6x1	11	4
SHM3-1016A	SHM4-1016A	9.987	16.013	12	6	M6x1	11	4
SHM3-105	SHM4-105	9.987	5.013	14	7	M8x1.25	12	5
SHM3-108	SHM4-108	9.987	8.013	14	7	M8x1.25	12	5
SHM3-109	SHM4-109	9.987	9.013	14	7	M8x1.25	12	5
SHM3-1010	SHM4-1010	9.987	10.013	14	7	M8x1.25	12	5
SHM3-1012	SHM4-1012	9.987	12.013	14	7	M8x1.25	12	5
SHM3-1013	SHM4-1013	9.987	13.013	14	7	M8x1.25	12	5
SHM3-1016	SHM4-1016	9.987	16.013	14	7	M8x1.25	12	5
SHM3-1020	SHM4-1020	9.987	20.013	14	7	M8x1.25	12	5
SHM3-1025	SHM4-1025	9.987	25.013	14	7	M8x1.25	12	5
SHM3-1030	SHM4-1030	9.987	30.013	14	7	M8x1.25	12	5
SHM3-1040	SHM4-1040	9.987	40.013	14	7	M8x1.25	12	5
SHM3-1045	SHM4-1045	9.987	45.013	14	7	M8x1.25	12	5
SHM3-1060	SHM4-1060	9.987	60.013	14	7	M8x1.25	12	5
SHM3-1080	SHM4-1080	9.987	80.013	14	7	M8x1.25	12	5
SHM3-1090	SHM4-1090	9.987	90.013	14	7	M8x1.25	12	5
SHM3-1210	SHM4-1210	11.987	10.013	20	8	M10x1.5	16	6
SHM3-1212	SHM4-1212	11.987	12.013	20	8	M10x1.5	16	6
SHM3-1216	SHM4-1216	11.987	16.013	20	8	M10x1.5	16	6
SHM3-1217	SHM4-1217	11.987	17.013	20	8	M10x1.5	16	6
SHM3-1220	SHM4-1220	11.987	20.013	20	8	M10x1.5	16	6
SHM3-1225	SHM4-1225	11.987	25.013	20	8	M10x1.5	16	6
SHM3-1230	SHM4-1230	11.987	30.013	20	8	M10x1.5	16	6
SHM3-1235	SHM4-1235	11.987	35.013	20	8	M10x1.5	16	6
SHM3-1240	SHM4-1240	11.987	40.013	20	8	M10x1.5	16	6
SHM3-1260	SHM4-1260	11.987	60.013	20	8	M10x1.5	16	6