

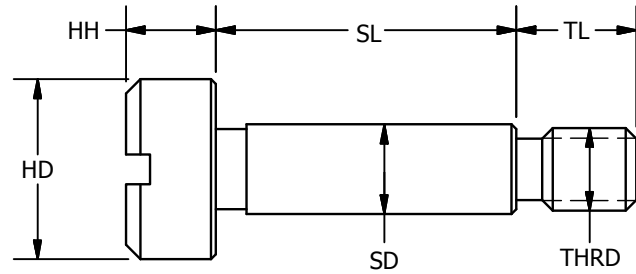
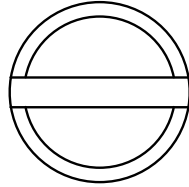
SS3  
SS4

# FASTENERS

## Precision Shoulder Screws

Slotted Head - Inch Sizes

SS3  
SS4



303 SS - Rockwell B83  
416 SS - Rockwell C26-32

Part Number		-.001 SD	+.002 SL	±.005 HD	±.005 HH	TH	±.005 TL	Slot Width
303SS	416SS							
SS3-0909	SS4-0909	0.0935	0.0943	3/16	3/32	#2-56	1/8	.030-.035
SS3-0912	SS4-0912	0.0935	0.1255	3/16	3/32	#2-56	1/8	.030-.035
SS3-0918	SS4-0918	0.0935	0.1880	3/16	3/32	#2-56	1/8	.030-.035
SS3-0925	SS4-0925	0.0935	0.2505	3/16	3/32	#2-56	1/8	.030-.035
SS3-0931	SS4-0931	0.0935	0.3130	3/16	3/32	#2-56	1/8	.030-.035
SS3-0937	SS4-0937	0.0935	0.3755	3/16	3/32	#2-56	1/8	.030-.035
SS3-0950	SS4-0950	0.0935	0.5005	3/16	3/32	#2-56	1/8	.030-.035
SS3-1212	SS4-1212	0.1245	0.1255	1/4	1/8	#4-40	5/32	.040-.045
SS3-1218	SS4-1218	0.1245	0.1880	1/4	1/8	#4-40	5/32	.040-.045
SS3-1225	SS4-1225	0.1245	0.2505	1/4	1/8	#4-40	5/32	.040-.045
SS3-1231	SS4-1231	0.1245	0.3130	1/4	1/8	#4-40	5/32	.040-.045
SS3-1237	SS4-1237	0.1245	0.3755	1/4	1/8	#4-40	5/32	.040-.045
SS3-1250	SS4-1250	0.1245	0.5005	1/4	1/8	#4-40	5/32	.040-.045
SS3-1262	SS4-1262	0.1245	0.6255	1/4	1/8	#4-40	5/32	.040-.045
SS3-1275	SS4-1275	0.1245	0.7505	1/4	1/8	#4-40	5/32	.040-.045
SS3-12100	SS4-12100	0.1245	1.0005	1/4	1/8	#4-40	5/32	.040-.045
SS3-1512	SS4-1512	0.1557	0.1255	9/32	1/8	#6-32	3/16	.040-.045
SS3-1518	SS4-1518	0.1557	0.1880	9/32	1/8	#6-32	3/16	.040-.045
SS3-1525	SS4-1525	0.1557	0.2505	9/32	1/8	#6-32	3/16	.040-.045
SS3-1531	SS4-1531	0.1557	0.3130	9/32	1/8	#6-32	3/16	.040-.045
SS3-1812	SS4-1812	0.1870	0.1255	5/16	5/32	#8-32	3/16	.040-.045
SS3-1818	SS4-1818	0.1870	0.1880	5/16	5/32	#8-32	3/16	.040-.045
SS3-1825	SS4-1825	0.1870	0.2505	5/16	5/32	#8-32	3/16	.040-.045
SS3-1831	SS4-1831	0.1870	0.3130	5/16	5/32	#8-32	3/16	.040-.045
SS3-1837	SS4-1837	0.1870	0.3755	5/16	5/32	#8-32	3/16	.040-.045
SS3-1843	SS4-1843	0.1870	0.4380	5/16	5/32	#8-32	3/16	.040-.045
SS3-1850	SS4-1850	0.1870	0.5005	5/16	5/32	#8-32	3/16	.040-.045
SS3-1862	SS4-1862	0.1870	0.6255	5/16	5/32	#8-32	3/16	.040-.045
SS3-1875	SS4-1875	0.1870	0.7505	5/16	5/32	#8-32	3/16	.040-.045
SS3-1887	SS4-1887	0.1870	0.8755	5/16	5/32	#8-32	3/16	.040-.045
SS3-18100	SS4-18100	0.1870	1.0005	5/16	5/32	#8-32	3/16	.040-.045
SS3-18125	SS4-18125	0.1870	1.2505	5/16	5/32	#8-32	3/16	.040-.045
SS3-18137	SS4-18137	0.1870	1.3755	5/16	5/32	#8-32	3/16	.040-.045
SS3-18150	SS4-18150	0.1870	1.5005	5/16	5/32	#8-32	3/16	.040-.045
SS3-1843	SS4-1843	0.1870	0.4380	5/16	5/32	#8-32	3/16	.040-.045
SS3-1850	SS4-1850	0.1870	0.5005	5/16	5/32	#8-32	3/16	.040-.045
SS3-1862	SS4-1862	0.1870	0.6255	5/16	5/32	#8-32	3/16	.040-.045
SS3-1875	SS4-1875	0.1870	0.7505	5/16	5/32	#8-32	3/16	.040-.045
SS3-18100	SS4-18100	0.1870	1.0005	5/16	5/32	#8-32	3/16	.040-.045
SS3-18125	SS4-18125	0.1870	1.2505	5/16	5/32	#8-32	3/16	.040-.045
SS3-18150	SS4-18150	0.1870	1.5005	5/16	5/32	#8-32	3/16	.040-.045

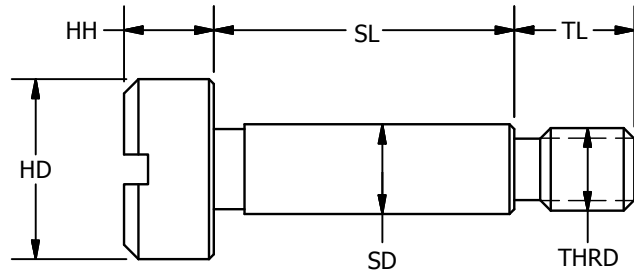
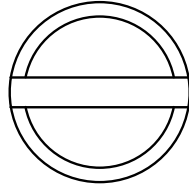
SS3  
SS4

# FASTENERS

## Precision Shoulder Screws

Slotted Head - Inch Sizes

SS3  
SS4



303 SS - Rockwell B83  
416 SS - Rockwell C26-32

Part Number		-.001 SD	+.002 SL	±.005 HD	±.005 HH	TH	±.005 TL	Slot Width
303SS	416SS							
SS3-2512	SS4-2512	0.2495	0.1255	3/8	3/16	#10-32	1/4	.051-.057
SS3-2518	SS4-2518	0.2495	0.1880	3/8	3/16	#10-32	1/4	.051-.057
SS3-2525	SS4-2525	0.2495	0.2505	3/8	3/16	#10-32	1/4	.051-.057
SS3-2531	SS4-2531	0.2495	0.3130	3/8	3/16	#10-32	1/4	.051-.057
SS3-2537	SS4-2537	0.2495	0.3755	3/8	3/16	#10-32	1/4	.051-.057
SS3-2550	SS4-2550	0.2495	0.5005	3/8	3/16	#10-32	1/4	.051-.057
SS3-2556	SS4-2556	0.2495	0.5630	3/8	3/16	#10-32	1/4	.051-.057
SS3-2562	SS4-2562	0.2495	0.6255	3/8	3/16	#10-32	1/4	.051-.057
SS3-2575	SS4-2575	0.2495	0.7505	3/8	3/16	#10-32	1/4	.051-.057
SS3-2510	SS4-2510	0.2495	1.0005	3/8	3/16	#10-32	1/4	.051-.057
SS3-25125	SS4-25125	0.2495	1.2505	3/8	3/16	#10-32	1/4	.051-.057
SS3-25150	SS4-25150	0.2495	1.5005	3/8	3/16	#10-32	1/4	.051-.057
SS3-3125	SS4-3125	0.3120	0.2505	1/2	7/32	1/4-20	7/16	.057-.064
SS3-3131	SS4-3131	0.3120	0.3130	1/2	7/32	1/4-20	7/16	.057-.064
SS3-3137	SS4-3137	0.3120	0.3755	1/2	7/32	1/4-20	7/16	.057-.064
SS3-3150	SS4-3150	0.3120	0.5005	1/2	7/32	1/4-20	7/16	.057-.064
SS3-3162	SS4-3162	0.3120	0.6255	1/2	7/32	1/4-20	7/16	.057-.064
SS3-3175	SS4-3175	0.3120	0.7505	1/2	7/32	1/4-20	7/16	.057-.064
SS3-3731	SS4-3731	0.3745	0.3130	9/16	1/4	5/16-18	1/2	.060-.070
SS3-3731A	SS4-3731A	0.3745	0.3130	1/2	7/32	1/4-20	7/16	.057-.064
SS3-3737	SS4-3737	0.3745	0.3755	9/16	1/4	5/16-18	1/2	.060-.070
SS3-3737A	SS4-3737A	0.3745	0.3755	1/2	7/32	1/4-20	7/16	.057-.064
SS3-3750	SS4-3750	0.3745	0.5005	9/16	1/4	5/16-18	1/2	.060-.070
SS3-3750A	SS4-3750A	0.3745	0.5005	1/2	7/32	1/4-20	7/16	.057-.064
SS3-3762	SS4-3762	0.3745	0.6255	9/16	1/4	5/16-18	1/2	.060-.070
SS3-3762A	SS4-3762A	0.3745	0.6255	1/2	7/32	1/4-20	7/16	.057-.064
SS3-37100	SS4-37100	0.3745	1.0005	9/16	1/4	5/16-18	1/2	.060-.070
SS3-37125	SS4-37125	0.3745	1.2505	9/16	1/4	5/16-18	1/2	.060-.070
SS3-37150	SS4-37150	0.3745	1.5005	9/16	1/4	5/16-18	1/2	.060-.070
SS3-5031	SS4-5031	0.4995	0.3130	3/4	5/16	3/8-16	5/8	.060-.070
SS3-5050	SS4-5050	0.4995	0.5005	3/4	5/16	3/8-16	5/8	.060-.070
SS3-5062	SS4-5062	0.4995	0.6255	3/4	5/16	3/8-16	5/8	.060-.070
SS3-5075	SS4-5075	0.4995	0.7505	3/4	5/16	3/8-16	5/8	.060-.070
SS3-50100	SS4-50100	0.4995	1.0005	3/4	5/16	3/8-16	5/8	.060-.070

\*Specials made to order

Slot Depth = 1/3 the Width of the Head

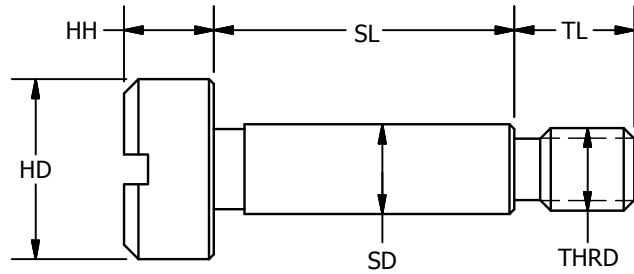
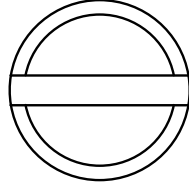
**SSM3**  
**SSM4**

# FASTENERS

## Precision Shoulder Screws

Slotted Head - Metric Sizes

**SSM3**  
**SSM4**



303 SS - Rockwell B83  
416 SS - Rockwell C26-32

Part Number		-.025 SD	+.050 SL	±.127 HD	±.127 HH	TH	±.127 TL	Slot Width
303SS	416SS							
SSM3-43	SSM4-43	3.987	3.013	6	3	M3x0.5	4	1.14-1.27
SSM3-44	SSM4-44	3.987	4.013	6	3	M3x0.5	4	1.14-1.27
SSM3-45	SSM4-45	3.987	5.013	6	3	M3x0.5	4	1.14-1.27
SSM3-46	SSM4-46	3.987	6.013	6	3	M3x0.5	4	1.14-1.27
SSM3-47	SSM4-47	3.987	7.013	6	3	M3x0.5	4	1.14-1.27
SSM3-48	SSM4-48	3.987	8.013	6	3	M3x0.5	4	1.14-1.27
SSM3-410	SSM4-410	3.987	10.013	6	3	M3x0.5	4	1.14-1.27
SSM3-412	SSM4-412	3.987	12.013	6	3	M3x0.5	4	1.14-1.27
SSM3-416	SSM4-416	3.987	16.013	6	3	M3x0.5	4	1.14-1.27
SSM3-420	SSM4-420	3.987	20.013	6	3	M3x0.5	4	1.14-1.27
SSM3-425	SSM4-425	3.987	25.013	6	3	M3x0.5	4	1.14-1.27
SSM3-430	SSM4-430	3.987	30.013	6	3	M3x0.5	4	1.14-1.27
SSM3-54	SSM4-54	4.987	4.013	8	4	M4x0.7	5	1.27-1.45
SSM3-55	SSM4-55	4.987	5.013	8	4	M4x0.7	5	1.27-1.45
SSM3-56	SSM4-56	4.987	6.013	8	4	M4x0.7	5	1.27-1.45
SSM3-57	SSM4-57	4.987	7.013	8	4	M4x0.7	5	1.27-1.45
SSM3-58	SSM4-58	4.987	8.013	8	4	M4x0.7	5	1.27-1.45
SSM3-59	SSM4-59	4.987	9.013	8	4	M4x0.7	5	1.27-1.45
SSM3-510	SSM4-510	4.987	10.013	8	4	M4x0.7	5	1.27-1.45
SSM3-512	SSM4-512	4.987	12.013	8	4	M4x0.7	5	1.27-1.45
SSM3-514	SSM4-514	4.987	14.013	8	4	M4x0.7	5	1.27-1.45
SSM3-516	SSM4-516	4.987	16.013	8	4	M4x0.7	5	1.27-1.45
SSM3-520	SSM4-520	4.987	20.013	8	4	M4x0.7	5	1.27-1.45
SSM3-521	SSM4-521	4.987	21.013	8	4	M4x0.7	5	1.27-1.45
SSM3-525	SSM4-525	4.987	25.013	8	4	M4x0.7	5	1.27-1.45
SSM3-526	SSM4-526	4.987	26.013	8	4	M4x0.7	5	1.27-1.45
SSM3-530	SSM4-530	4.987	30.013	8	4	M4x0.7	5	1.27-1.45
SSM3-64	SSM4-64	5.987	4.013	10	5	M5x0.8	6	1.27-1.45
SSM3-65	SSM4-65	5.987	5.013	10	5	M5x0.8	6	1.27-1.45
SSM3-66	SSM4-66	5.987	6.013	10	5	M5x0.8	6	1.27-1.45
SSM3-68	SSM4-68	5.987	8.013	10	5	M5x0.8	6	1.27-1.45
SSM3-69	SSM4-69	5.987	9.013	10	5	M5x0.8	6	1.27-1.45
SSM3-610	SSM4-610	5.987	10.013	10	5	M5x0.8	6	1.27-1.45
SSM3-612	SSM4-612	5.987	12.013	10	5	M5x0.8	6	1.27-1.45
SSM3-614	SSM4-614	5.987	14.013	10	5	M5x0.8	6	1.27-1.45
SSM3-615	SSM4-615	5.987	15.013	10	5	M5x0.8	6	1.27-1.45
SSM3-616	SSM4-616	5.987	16.013	10	5	M5x0.8	6	1.27-1.45
SSM3-620	SSM4-620	5.987	20.013	10	5	M5x0.8	6	1.27-1.45
SSM3-625	SSM4-625	5.987	25.013	10	5	M5x0.8	6	1.27-1.45
SSM3-630	SSM4-630	5.987	30.013	10	5	M5x0.8	6	1.27-1.45

Specials made to order

Slot Depth = 1/3 the Width of the Head

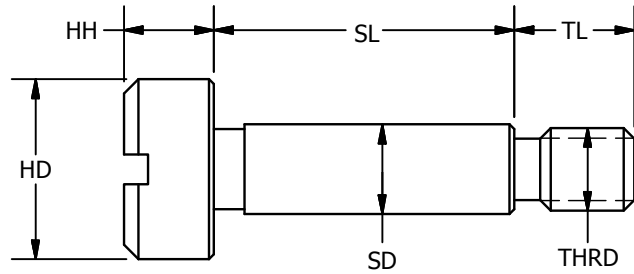
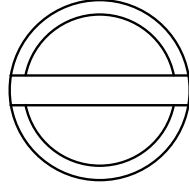
**SSM3**  
**SSM4**

# FASTENERS

## Precision Shoulder Screws

Slotted Head - Metric Sizes

**SSM3**  
**SSM4**



303 SS - Rockwell B83  
416 SS - Rockwell C26-32

Part Number		-.025 SD	+.050 SL	±.127 HD	±.127 HH	TH	±.127 TL	Slot Width
303SS	416SS							
SSM3-86	SSM4-86	7.987	6.013	12	6	M6x1	11	1.52-1.83
SSM3-88	SSM4-88	7.987	8.013	12	6	M6x1	11	1.52-1.83
SSM3-810	SSM4-810	7.987	10.013	12	6	M6x1	11	1.52-1.83
SSM3-812	SSM4-812	7.987	12.013	12	6	M6x1	11	1.52-1.83
SSM3-814	SSM4-814	7.987	14.013	12	6	M6x1	11	1.52-1.83
SSM3-816	SSM4-816	7.987	16.013	12	6	M6x1	11	1.52-1.83
SSM3-820	SSM4-820	7.987	20.013	12	6	M6x1	11	1.52-1.83
SSM3-825	SSM4-825	7.987	25.013	12	6	M6x1	11	1.52-1.83
SSM3-830	SSM4-830	7.987	30.013	12	6	M6x1	11	1.52-1.83
SSM3-840	SSM4-840	7.987	40.013	12	6	M6x1	11	1.52-1.83
SSM3-860	SSM4-860	7.987	60.013	12	6	M6x1	11	1.52-1.83
SSM3-104A	SSM4-104A	9.987	4.013	12	6	M6x1	11	1.52-1.83
SSM3-105	SSM4-105	9.987	5.013	14	7	M8x1.25	12	1.78-1.91
SSM3-108	SSM4-108	9.987	8.013	14	7	M8x1.25	12	1.78-1.91
SSM3-108A	SSM4-108A	9.987	8.013	12	6	M6x1	11	1.52-1.83
SSM3-109	SSM4-109	9.987	9.013	14	7	M8x1.25	12	1.78-1.91
SSM3-1010	SSM4-1010	9.987	10.013	14	7	M8x1.25	12	1.78-1.91
SSM3-1010A	SSM4-1010A	9.987	10.013	12	6	M6x1	11	1.52-1.83
SSM3-1012	SSM4-1012	9.987	12.013	14	7	M8x1.25	12	1.78-1.91
SSM3-1012A	SSM4-1012A	9.987	12.013	12	6	M6x1	11	1.52-1.83
SSM3-1013	SSM4-1013	9.987	13.013	14	7	M8x1.25	12	1.78-1.91
SSM3-1016	SSM4-1016	9.987	16.013	14	7	M8x1.25	12	1.78-1.91
SSM3-1016A	SSM4-1016A	9.987	16.013	12	6	M6x1	11	1.52-1.83
SSM3-1020	SSM4-1020	9.987	20.013	14	7	M8x1.25	12	1.78-1.91
SSM3-1025	SSM4-1025	9.987	25.013	14	7	M8x1.25	12	1.78-1.91
SSM3-1030	SSM4-1030	9.987	30.013	14	7	M8x1.25	12	1.78-1.91
SSM3-1040	SSM4-1040	9.987	40.013	14	7	M8x1.25	12	1.78-1.91
SSM3-1045	SSM4-1045	9.987	45.013	14	7	M8x1.25	12	1.78-1.91
SSM3-1060	SSM4-1060	9.987	60.013	14	7	M8x1.25	12	1.78-1.91
SSM3-1080	SSM4-1080	9.987	80.013	14	7	M8x1.25	12	1.78-1.91
SSM3-1090	SSM4-1090	9.987	90.013	14	7	M8x1.25	12	1.78-1.91
SSM3-1210	SSM4-1210	11.987	10.013	20	8	M10x1.5	16	2.03-2.29
SSM3-1212	SSM4-1212	11.987	12.013	20	8	M10x1.5	16	2.03-2.29
SSM3-1216	SSM4-1216	11.987	16.013	20	8	M10x1.5	16	2.03-2.29
SSM3-1217	SSM4-1217	11.987	17.013	20	8	M10x1.5	16	2.03-2.29
SSM3-1220	SSM4-1220	11.987	20.013	20	8	M10x1.5	16	2.03-2.29
SSM3-1225	SSM4-1225	11.987	25.013	20	8	M10x1.5	16	2.03-2.29
SSM3-1230	SSM4-1230	11.987	30.013	20	8	M10x1.5	16	2.03-2.29
SSM3-1235	SSM4-1235	11.987	35.013	20	8	M10x1.5	16	2.03-2.29
SSM3-1240	SSM4-1240	11.987	40.013	20	8	M10x1.5	16	2.03-2.29
SSM3-1260	SSM4-1260	11.987	60.013	20	8	M10x1.5	16	2.03-2.29

Specials made to order

Slot Depth = 1/3 the Width of the Head