

ST3

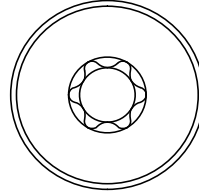
FASTENERS

Precision Shoulder Screws

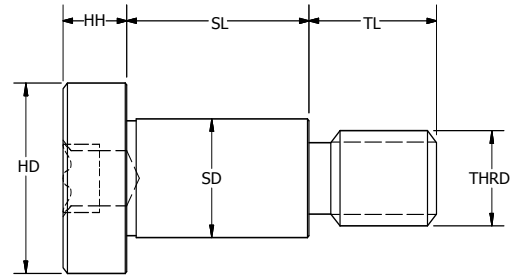
Star Socket Head - Inch Sizes

Conforms to ISO 10664-2014

ST3



STAR SOCKET HEAD
TORX® COMPATIBLE



303 SS - Rockwell B83

Specials made to order

Other materials available on request

Part Number	SD -.001	SL +.002	HD +.005	HH +.005	THRD	TL +.005	Star Drive
ST3-0909	0.0935	0.0943	3/16	3/32	#2-56	1/8	T6
ST3-0912	0.0935	0.1255	3/16	3/32	#2-56	1/8	T6
ST3-0918	0.0935	0.1880	3/16	3/32	#2-56	1/8	T6
ST3-0925	0.0935	0.2505	3/16	3/32	#2-56	1/8	T6
ST3-0931	0.0935	0.3130	3/16	3/32	#2-56	1/8	T6
ST3-0937	0.0935	0.3755	3/16	3/32	#2-56	1/8	T6
ST3-0950	0.0935	0.5005	3/16	3/32	#2-56	1/8	T6
ST3-1212	0.1245	0.1255	1/4	1/8	#4-40	5/32	T8
ST3-1218	0.1245	0.1880	1/4	1/8	#4-40	5/32	T8
ST3-1225	0.1245	0.2505	1/4	1/8	#4-40	5/32	T8
ST3-1231	0.1245	0.3130	1/4	1/8	#4-40	5/32	T8
ST3-1237	0.1245	0.3755	1/4	1/8	#4-40	5/32	T8
ST3-1250	0.1245	0.5005	1/4	1/8	#4-40	5/32	T8
ST3-1262	0.1245	0.6255	1/4	1/8	#4-40	5/32	T8
ST3-1275	0.1245	0.7505	1/4	1/8	#4-40	5/32	T8
ST3-12100	0.1245	1.0005	1/4	1/8	#4-40	5/32	T8
ST3-1512	0.1557	0.1255	9/32	1/8	#6-32	3/16	T10
ST3-1518	0.1557	0.1880	9/32	1/8	#6-32	3/16	T10
ST3-1525	0.1557	0.2505	9/32	1/8	#6-32	3/16	T10
ST3-1531	0.1557	0.3130	9/32	1/8	#6-32	3/16	T10
ST3-1537	0.1557	0.3755	9/32	1/8	#6-32	3/16	T10
ST3-1543	0.1557	0.4380	9/32	1/8	#6-32	3/16	T10
ST3-1550	0.1557	0.5005	9/32	1/8	#6-32	3/16	T10
ST3-1562	0.1557	0.6255	9/32	1/8	#6-32	3/16	T10
ST3-1575	0.1557	0.7505	9/32	1/8	#6-32	3/16	T10
ST3-15100	0.1557	1.0005	9/32	1/8	#6-32	3/16	T10
ST3-1812	0.1870	0.1255	5/16	5/32	#8-32	3/16	T15
ST3-1815	0.1870	0.1565	5/16	5/32	#8-32	3/16	T15
ST3-1818	0.1870	0.1880	5/16	5/32	#8-32	3/16	T15
ST3-1825	0.1870	0.2505	5/16	5/32	#8-32	3/16	T15
ST3-1831	0.1870	0.3130	5/16	5/32	#8-32	3/16	T15
ST3-1837	0.1870	0.3755	5/16	5/32	#8-32	3/16	T15
ST3-1843	0.1870	0.4380	5/16	5/32	#8-32	3/16	T15
ST3-1850	0.1870	0.5005	5/16	5/32	#8-32	3/16	T15
ST3-1862	0.1870	0.6255	5/16	5/32	#8-32	3/16	T15
ST3-1875	0.1870	0.7505	5/16	5/32	#8-32	3/16	T15
ST3-1887	0.1870	0.8755	5/16	5/32	#8-32	3/16	T15
ST3-18100	0.1870	1.0005	5/16	5/32	#8-32	3/16	T15
ST3-18125	0.1870	1.2505	5/16	5/32	#8-32	3/16	T15
ST3-18137	0.1870	1.3755	5/16	5/32	#8-32	3/16	T15
ST3-18150	0.1870	1.5005	5/16	5/32	#8-32	3/16	T15

ST3

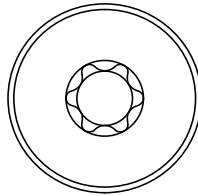
FASTENERS

ST3

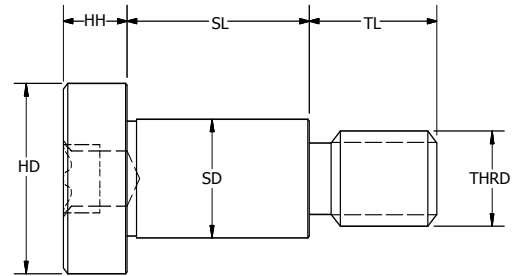
Precision Shoulder Screws

Star Socket Head - Inch Sizes

Conforms to ISO 10664-2014



STAR SOCKET HEAD
TORX* COMPATIBLE



303 SS - Rockwell B83
Specials made to order
Other materials available on request

Part Number	SD -.001	SL +.002	HD +.005	HH +.005	THRD	TL +.005	Star Drive
ST3-2512	0.2495	0.1255	3/8	3/16	#10-32	1/4	T20
ST3-2518	0.2495	0.1880	3/8	3/16	#10-32	1/4	T20
ST3-2525	0.2495	0.2505	3/8	3/16	#10-32	1/4	T20
ST3-2531	0.2495	0.3130	3/8	3/16	#10-32	1/4	T20
ST3-2537	0.2495	0.3755	3/8	3/16	#10-32	1/4	T20
ST3-2543	0.2495	0.4380	3/8	3/16	#10-32	1/4	T20
ST3-2550	0.2495	0.5005	3/8	3/16	#10-32	1/4	T20
ST3-2556	0.2495	0.5630	3/8	3/16	#10-32	1/4	T20
ST3-2562	0.2495	0.6255	3/8	3/16	#10-32	1/4	T20
ST3-2575	0.2495	0.7505	3/8	3/16	#10-32	1/4	T20
ST3-2587	0.2495	0.8755	3/8	3/16	#10-32	1/4	T20
ST3-2510	0.2495	1.0005	3/8	3/16	#10-32	1/4	T20
ST3-25125	0.2495	1.2505	3/8	3/16	#10-32	1/4	T20
ST3-25150	0.2495	1.5005	3/8	3/16	#10-32	1/4	T20
ST3-3125	0.3120	0.2505	1/2	7/32	1/4-20	7/16	T27
ST3-3131	0.3120	0.3130	1/2	7/32	1/4-20	7/16	T27
ST3-3137	0.3120	0.3755	1/2	7/32	1/4-20	7/16	T27
ST3-3150	0.3120	0.5005	1/2	7/32	1/4-20	7/16	T27
ST3-3162	0.3120	0.6255	1/2	7/32	1/4-20	7/16	T27
ST3-3175	0.3120	0.7505	1/2	7/32	1/4-20	7/16	T27
ST3-3187	0.3120	0.8755	1/2	7/32	1/4-20	7/16	T27
ST3-31100	0.3120	1.0005	1/2	7/32	1/4-20	7/16	T27
ST3-3731A	0.3745	0.3130	1/2	7/32	1/4-20	7/16	T40
ST3-3737A	0.3745	0.3755	1/2	7/32	1/4-20	7/16	T40
ST3-3750A	0.3745	0.5005	1/2	7/32	1/4-20	7/16	T40
ST3-3762A	0.3745	0.6255	1/2	7/32	1/4-20	7/16	T40
ST3-3731	0.3745	0.3130	9/16	1/4	5/16-18	1/2	T40
ST3-3737	0.3745	0.3755	9/16	1/4	5/16-18	1/2	T40
ST3-3750	0.3745	0.5005	9/16	1/4	5/16-18	1/2	T40
ST3-3762	0.3745	0.6255	9/16	1/4	5/16-18	1/2	T40
ST3-3775	0.3745	0.7505	9/16	1/4	5/16-18	1/2	T40
ST3-37100	0.3745	1.0005	9/16	1/4	5/16-18	1/2	T40
ST3-37125	0.3745	1.2505	9/16	1/4	5/16-18	1/2	T40
ST3-37150	0.3745	1.5005	9/16	1/4	5/16-18	1/2	T40
ST3-5031	0.4995	0.3130	3/4	5/16	3/8-16	5/8	T45
ST3-5050	0.4995	0.5005	3/4	5/16	3/8-16	5/8	T45
ST3-5062	0.4995	0.6255	3/4	5/16	3/8-16	5/8	T45
ST3-5075	0.4995	0.7505	3/4	5/16	3/8-16	5/8	T45
ST3-50100	0.4995	1.0005	3/4	5/16	3/8-16	5/8	T45