

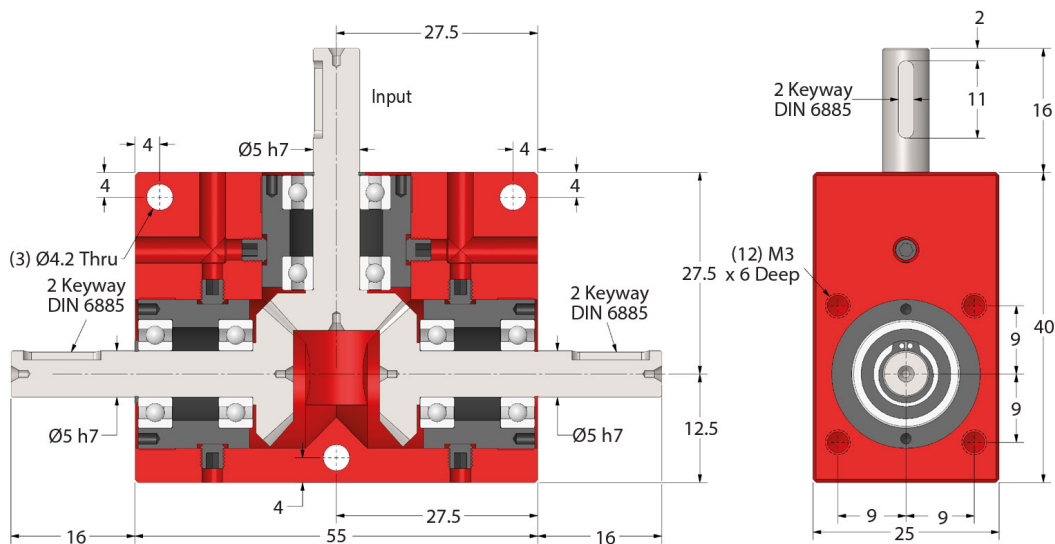
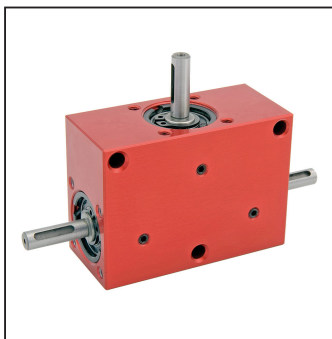
BLHM20

GEARBOXES

BLHM20

Bevel Heavy Duty Gearbox - Counter Rotating Outputs

Hardened Spiral Bevels 0.53 – 1.77 Nm **1:1 - 2:1**



Part Number			Ratio	Efficiency at 1000 RPM
Standard ≈1°	Low Standard ≤30'	Red. Standard ≤10'		
BLHM20-1	BLHM20-1A	BLHM20-1AR	1:1	88%
BLHM20-2	BLHM20-2A	BLHM20-2AR	2:1	88%

Weight: 0.160 kg approx.

Output Backlash: ≈1°.

Max. Input Speed: 3,000 Rpm.

Greased for Life: Shell Gadus S2 V220AD 2.

Input/Output Key: KK2-10.

Testing in your application is necessary.
You will need to assess duty cycles and confirm gearbox suitability with your own calculations.
All figures listed are to be used for guidance only.

Output Torque Nm

RPM Input	Reduction Ratio	
	1:1	2:1
3000	0.66	0.53
2000	0.72	0.58
1750	0.76	0.61
1000	0.88	0.70
500	1.00	0.80
100	1.35	1.08
50	1.48	1.18
10	1.77	1.41

ondrives.us

1-888-260-7466

516-771-6444

sales@ondrivesus.com

www.ondrivesus.com

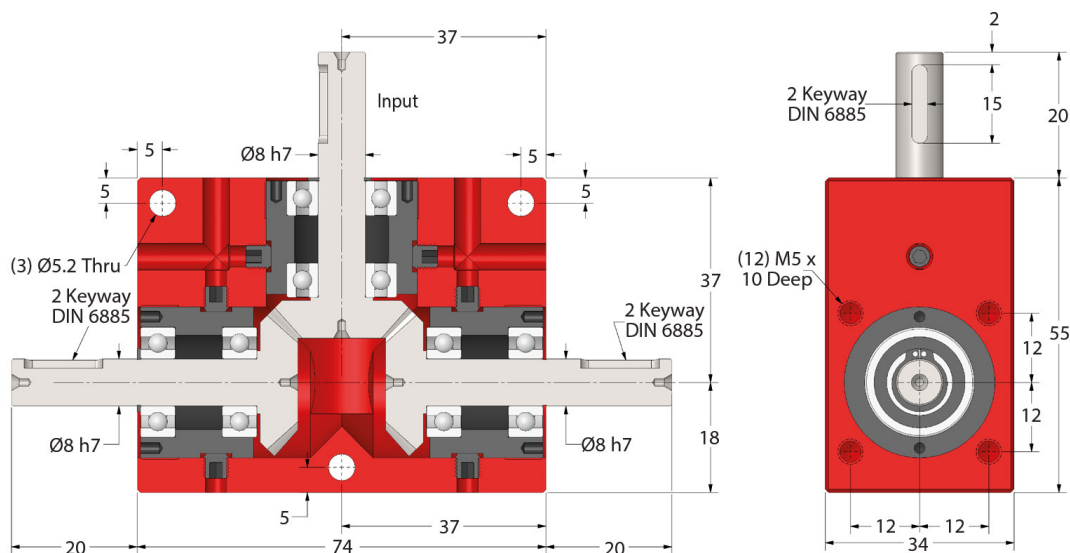
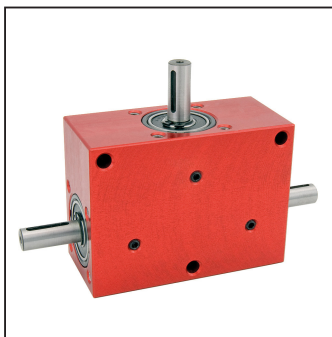
BLHM30

GEARBOXES

BLHM30

Bevel Heavy Duty Gearbox - Counter Rotating Outputs

Hardened Spiral Bevels 1.32 – 4.4 Nm **1:1 - 2:1**



Part Number			Ratio	Efficiency at 1000 RPM
Standard ≈1°	Low Standard ≤30'	Red. Standard ≤10'		
BLHM30-1	BLHM30-1A	BLHM30-1AR	1:1	88%
BLHM30-2	BLHM30-2A	BLHM30-2AR	2:1	88%

Weight: 0.345 kg approx.

Output Backlash: ≈1°.

Max. Input Speed: 3,000 Rpm.

Greased for Life: Shell Gadus S2 V220AD 2.

Input/Output Key: KK2-14.

Testing in your application is necessary.
You will need to assess duty cycles and confirm
gearbox suitability with your own calculations.
All figures listed are to be used for guidance
only.

Output Torque Nm

RPM Input	Reduction Ratio	
	1:1	2:1
3000	1.65	1.32
2000	1.81	1.45
1750	1.91	1.53
1000	2.20	1.76
500	2.51	2.00
100	3.38	2.70
50	3.70	3.00
10	4.40	3.54

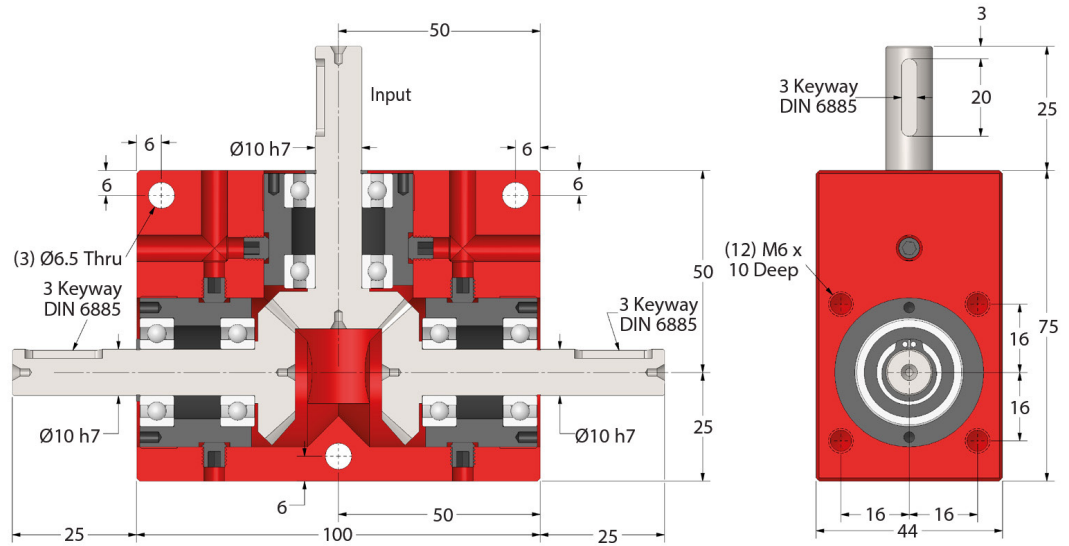
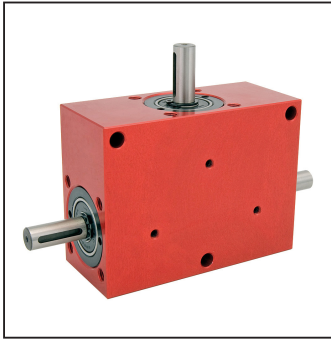
BLHM40

GEARBOXES

BLHM40

Bevel Heavy Duty Gearbox - Counter Rotating Outputs

Hardened Spiral Bevels 3 – 10.3 Nm 1:1 - 2:1



Part Number			Ratio	Efficiency at 1000 RPM
Standard ≈1°	Low Standard ≤30'	Red. Standard ≤10'		
BLHM40-1	BLHM40-1A	BLHM40-1AR	1:1	88%
BLHM40-2	BLHM40-2A	BLHM40-2AR	2:1	88%

Weight: 1.025 kg approx.

Output Backlash: ≈1°.

Max. Input Speed: 3,000 Rpm.

Greased for Life: Shell Gadus S2 V220AD 2.

Input/Output Key: KK3-20.

Testing in your application is necessary.
You will need to assess duty cycles and confirm
gearbox suitability with your own calculations.
All figures listed are to be used for guidance
only.

Output Torque Nm

RPM Input	Reduction Ratio	
	1:1	2:1
3000	4.0	3.0
2000	4.4	3.4
1750	4.6	3.6
1000	5.1	4.0
500	5.8	4.6
100	7.6	6.0
50	8.5	6.3
10	10.3	8.0

ondrives.us

1-888-260-7466

516-771-6444

sales@ondrivesus.com

www.ondrivesus.com

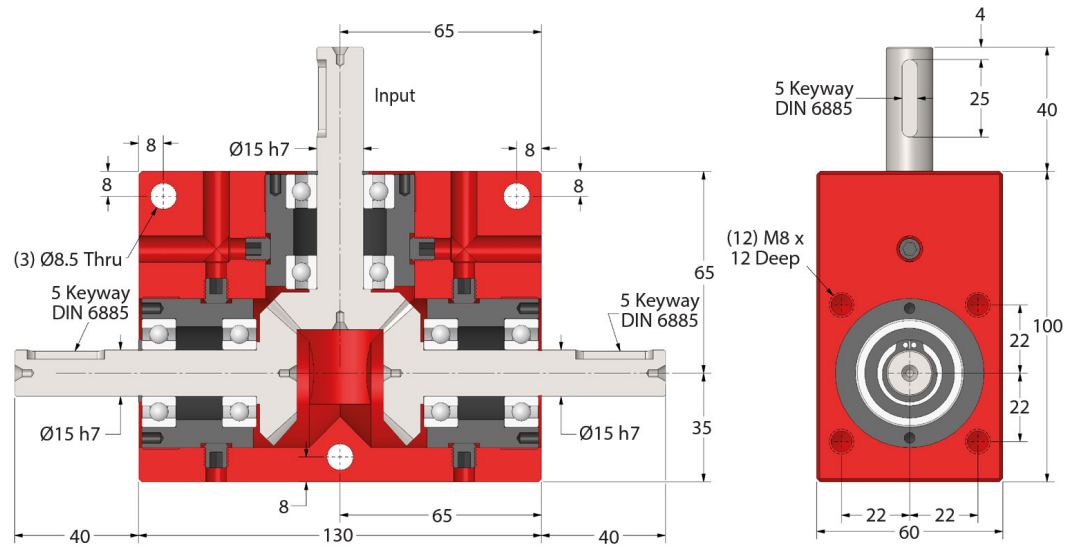
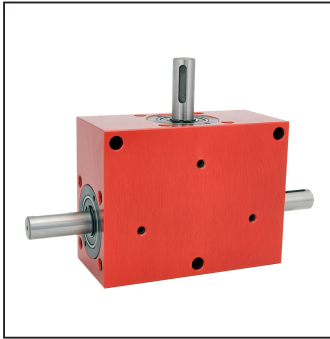
BLHM50

GEARBOXES

BLHM50

Bevel Heavy Duty Gearbox - Counter Rotating Outputs

Hardened Spiral Bevels 7.7 – 30 Nm 1:1 - 2:1



Part Number			Ratio	Efficiency at 1000 RPM
Standard ≈1°	Low Standard ≤30'	Red. Standard ≤10'		
BLHM50-1	BLHM50-1A	BLHM50-1AR	1:1	88%
BLHM50-2	BLHM50-2A	BLHM50-2AR	2:1	88%

Weight: 2.527 kg approx.

Output Backlash: ≈1°.

Max. Input Speed: 3,000 Rpm.

Greased for Life: Shell Gadus S2 V220AD 2.

Input/Output Key: KK5-25.

Testing in your application is necessary.
You will need to assess duty cycles and confirm
gearbox suitability with your own calculations.
All figures listed are to be used for guidance
only.

Output Torque Nm

RPM Input	Reduction Ratio	
	1:1	2:1
3000	11.5	7.7
2000	13.2	8.7
1750	13.9	9.1
1000	15.9	10.2
500	17.5	11.6
100	23.0	15.0
50	25.0	17.0
10	30.0	20.0

ondrives.us

☎ 1-888-260-7466

📄 516-771-6444

💻 sales@ondrivesus.com

🌐 www.ondrivesus.com

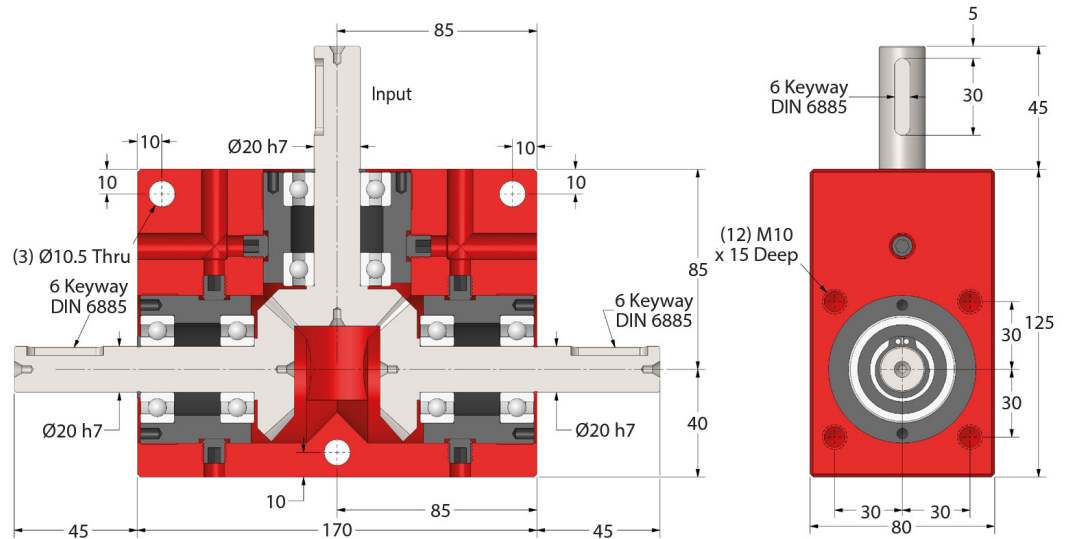
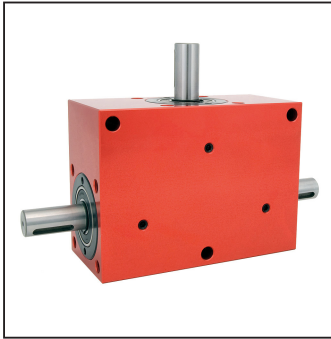
BLHM60

GEARBOXES

BLHM60

Bevel Heavy Duty Gearbox - Counter Rotating Outputs

Hardened Spiral Bevels 19 – 70 Nm **1:1 - 2:1**



Part Number			Ratio	Efficiency at 1000 RPM
Standard ≈1°	Low Standard ≤30'	Red. Standard ≤10'		
BLHM60-1	BLHM60-1A	BLHM60-1AR	1:1	88%
BLHM60-2	BLHM60-2A	BLHM60-2AR	2:1	88%

Weight: 5.200 kg approx.

Output Backlash: ≈1°.

Max. Input Speed: 3,000 Rpm.

Greased for Life: Shell Gadus S2 V220AD 2.

Input/Output Key: KK6-30.

Testing in your application is necessary.
You will need to assess duty cycles and confirm
gearbox suitability with your own calculations.
All figures listed are to be used for guidance
only.

Output Torque Nm

RPM Input	Reduction Ratio	
	1:1	2:1
3000	26.0	19.0
2000	30.0	22.0
1750	31.3	22.8
1000	35.0	25.0
500	40.0	29.0
100	53.0	38.0
50	57.0	43.0
10	70.0	52.0

ondrives.us

☎ 1-888-260-7466

📄 516-771-6444

💻 sales@ondrivesus.com

🌐 www.ondrivesus.com

BLHM70

Bevel Heavy Duty Gearbox - Counter Rotating Outputs