

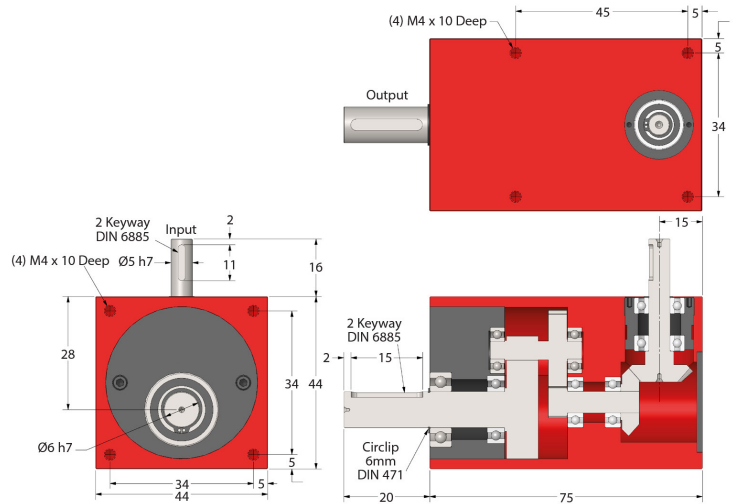
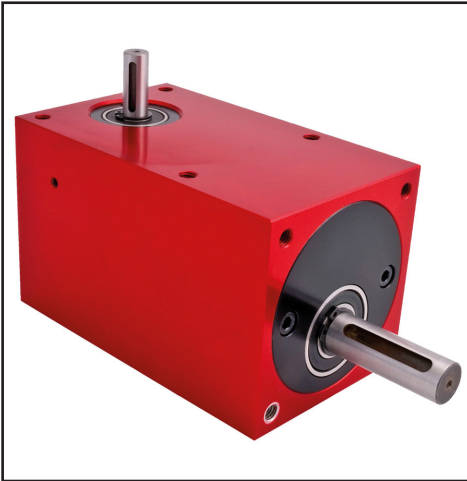
BLN20

GEARBOXES

Heavy Duty Gear Reducers

1.6 – 5 Nm **6:1 - 24:1**

BLN20



Part Number	Ratio	Efficiency at 1000 Rpm	Nm Output at 1000 Rpm
BLN20-6	6:1	88%	2.0
BLN20-12	12:1	88%	2.3
BLN20-18	18:1	88%	2.6
BLN20-24	24:1	88%	2.8

Backlash: Depends on ratio.
 Max. Input Speed: 3,000 Rpm.
 Greased for Life: Shell Gadus S2 V220AD 2.
 Output Key: KK2-14.
 Input Key: KK2-10.

Testing in your application is necessary.
 You will need to assess duty cycles and confirm
 gearbox suitability with your own calculations.
 All figures listed are to be used for guidance only.

Output Torque Nm

RPM Input	Reduction Ratio			
	6:1	12:1	18:1	24:1
3000	1.6	1.8	2.0	2.2
2000	1.8	2.0	2.3	2.5
1000	2.0	2.3	2.6	2.8
500	2.3	2.7	3.0	3.2
100	2.6	3.0	3.5	3.8
50	3.1	3.5	4.0	4.4
10	3.6	4.0	4.5	5.0

ondrives.us

☎ 1-888-260-7466
 📄 516-771-6444

💻 sales@ondrivesus.com
 🌐 www.ondrivesus.com

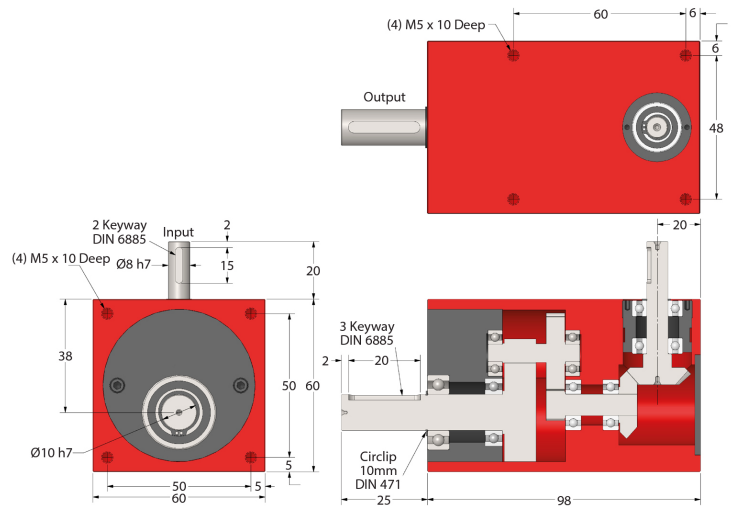
BLN30

GEARBOXES

Heavy Duty Gear Reducers

5 – 15.5 Nm **6:1 - 24:1**

BLN30



Part Number	Ratio	Efficiency at 1000 Rpm	Nm Output at 1000 Rpm
BLN30-6	6:1	88%	6.0
BLN30-12	12:1	88%	7.2
BLN30-18	18:1	88%	7.6
BLN30-24	24:1	88%	8.1

Weight: 1.05 kg. Backlash: Depends on ratio.
 Max. Input Speed: 3,000 Rpm.
 Greased for Life: Shell Gadus S2 V220AD 2.
 Output Key: KK3-20.
 Input Key: KK2-14.

Testing in your application is necessary.
 You will need to assess duty cycles and confirm
 gearbox suitability with your own calculations.
 All figures listed are to be used for guidance only.

Output Torque Nm

RPM Input	Reduction Ratio			
	6:1	12:1	18:1	24:1
3000	5.0	5.8	6.1	6.5
2000	5.3	6.3	6.8	7.2
1000	6.0	7.2	7.6	8.1
500	7.7	8.4	8.8	9.1
100	10.0	10.9	11.6	12.2
50	11.2	12.4	13.2	14.0
10	13.0	14.0	15.0	15.5

ondrives.us

☎ 1-888-260-7466
 📄 516-771-6444

💻 sales@ondrivesus.com
 🌐 www.ondrivesus.com

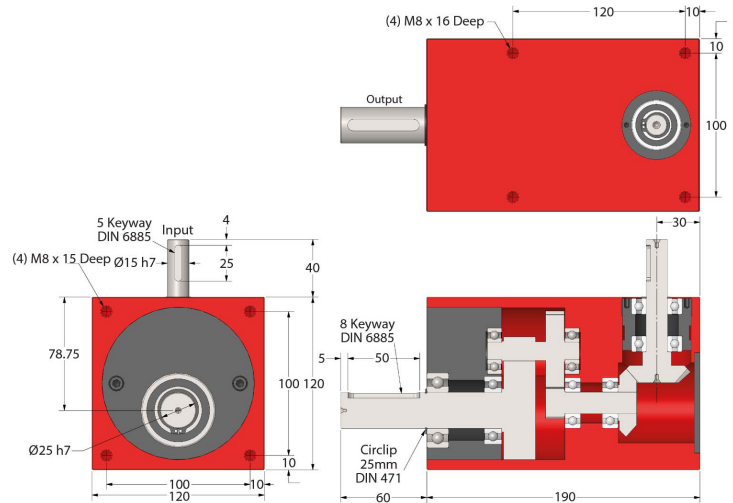
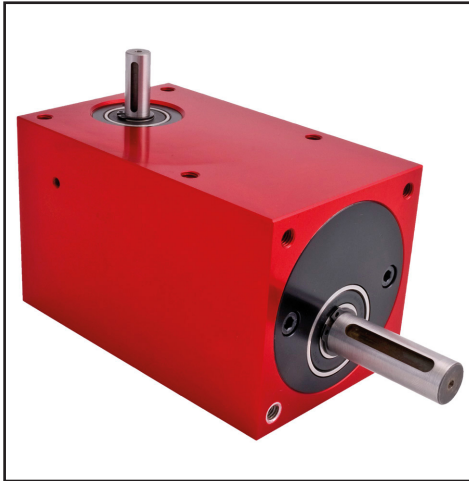
BLN50

GEARBOXES

Heavy Duty Gear Reducers

40.6 – 110 Nm **6:1 - 24:1**

BLN50



Part Number	Ratio	Efficiency at 1000 Rpm	Nm Output at 1000 Rpm
BLN50-6	6:1	88%	51.1
BLN50-12	12:1	88%	54.0
BLN50-18	18:1	88%	57.4
BLN50-24	24:1	88%	60.0

Backlash: Depends on ratio.
 Max. Input Speed: 3,000 Rpm.
 Greased for Life: Shell Gadus S2 V220AD 2.
 Output Key: KK8-7-50.
 Input Key: KK5-25.

Testing in your application is necessary.
 You will need to assess duty cycles and confirm
 gearbox suitability with your own calculations.
 All figures listed are to be used for guidance only.

Output Torque Nm

RPM Input	Reduction Ratio			
	6:1	12:1	18:1	24:1
3000	40.6	42.5	46.0	49.1
2000	45.0	47.3	50.2	53.0
1000	51.1	54.0	57.4	60.0
500	60.3	62.8	65.8	68.4
100	77.0	83.1	87.0	91.0
50	85.0	90.7	95.6	101.0
10	102.0	106.0	108.3	110.0

ondrives.us

☎ 1-888-260-7466
 📄 516-771-6444

💻 sales@ondrivesus.com
 🌐 www.ondrivesus.com

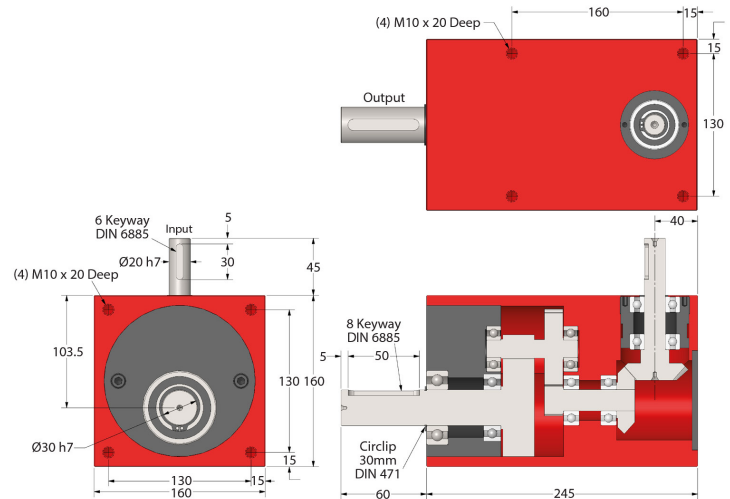
BLN60

GEARBOXES

Heavy Duty Gear Reducers

86 – 270 Nm **6:1 - 24:1**

BLN60



Part Number	Ratio	Efficiency at 1000 Rpm	Nm Output at 1000 Rpm
BLN60-6	6:1	88%	105
BLN60-12	12:1	88%	115
BLN60-18	18:1	88%	127
BLN60-24	24:1	88%	140

Backlash: Depends on ratio.
 Max. Input Speed: 3,000 Rpm.
 Greased for Life: Shell Gadus S2 V220AD 2.
 Output Key: KK8-7-50.
 Input Key: KK6-30.

Testing in your application is necessary.
 You will need to assess duty cycles and confirm
 gearbox suitability with your own calculations.
 All figures listed are to be used for guidance only.

Output Torque Nm

RPM Input	Reduction Ratio			
	6:1	12:1	18:1	24:1
3000	86	92	98	105
2000	91	100	109	120
1000	105	115	127	140
500	126	138	145	152
100	162	176	184	190
50	180	199	205	210
10	215	238	250	270

ondrives.us

1-888-260-7466
 516-771-6444

sales@ondrivesus.com
 www.ondrivesus.com

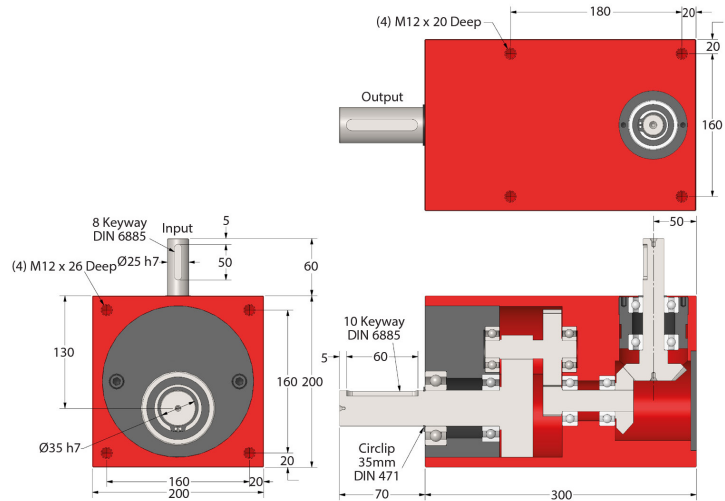
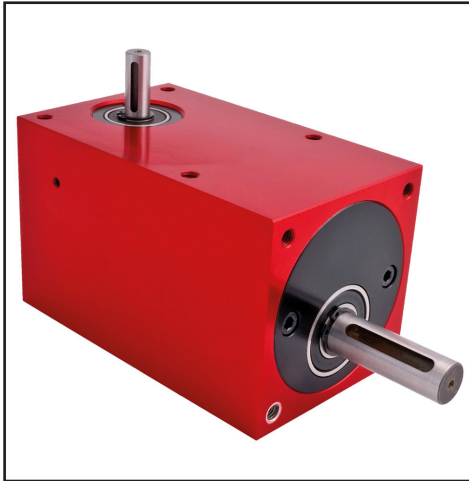
BLN70

GEARBOXES

Heavy Duty Gear Reducers

215 – 550 Nm **6:1 - 24:1**

BLN70



Part Number	Ratio	Efficiency at 1000 Rpm	Nm Output at 1000 Rpm
BLN70-6	6:1	88%	240
BLN70-12	12:1	88%	240
BLN70-18	18:1	88%	240
BLN70-24	24:1	88%	240

Backlash: Depends on ratio.
 Max. Input Speed: 2,000 Rpm.
 Greased for Life: Shell Gadus S2 V220AD 2.
 Output Key: KK10-8-50.
 Input Key: KK8-7-50.

Testing in your application is necessary.
 You will need to assess duty cycles and confirm
 gearbox suitability with your own calculations.
 All figures listed are to be used for guidance only.

Output Torque Nm

RPM Input	Reduction Ratio			
	6:1	12:1	18:1	24:1
2000	215	215	215	215
1000	240	240	240	240
500	270	270	270	270
100	310	310	320	330
50	400	410	410	420
10	450	480	510	550

ondrives.us

☎ 1-888-260-7466
 📄 516-771-6444

💻 sales@ondrivesus.com
 🌐 www.ondrivesus.com