

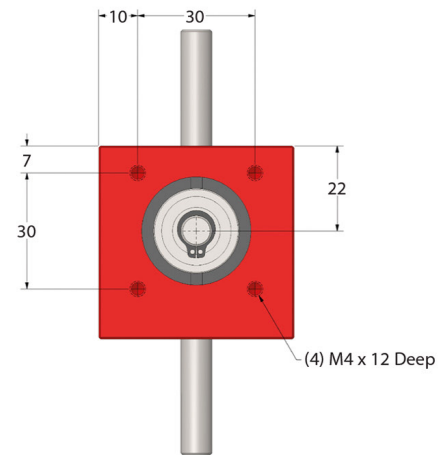
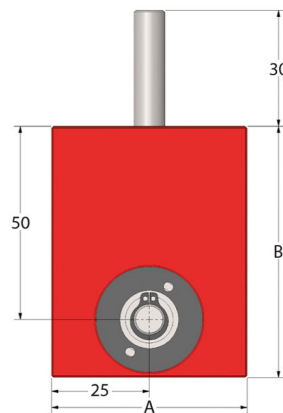
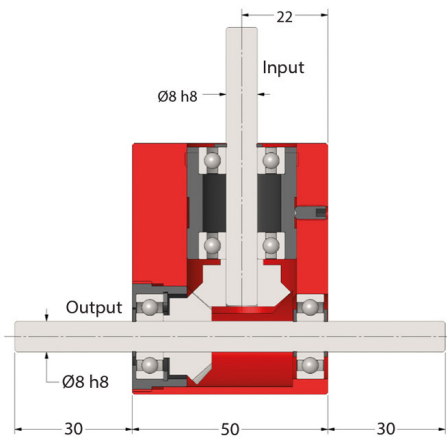
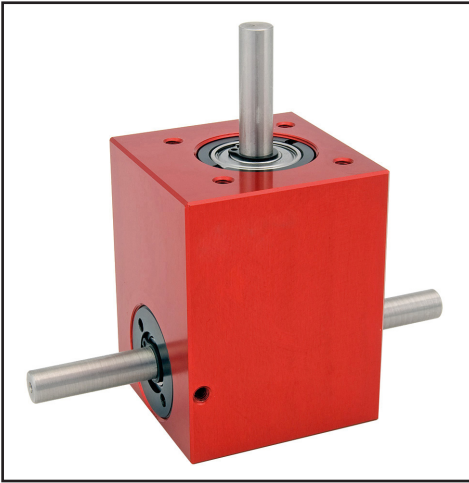
BL8

GEARBOXES

BL8

Bevel Tee Gearbox

Right Angled Drive 0.2 – 4 Nm **1:1 - 4:1**



Part Number	Ratio	Efficiency at 1000 Rpm	A	B
BL8-1	1:1	88%	50	65
BL8-2	2:1	88%	50	65
BL8-3	3:1	88%	50	75
BL8-4	4:1	88%	60	80
BL8-XH	1:1 - 4:1	Hardened Gears (=Nm x 2)		

Weight: 0.56 kg (1:1), 0.54 kg (2:1), 0.66 kg (3:1), 1.10 kg (4:1)

Backlash: $\approx 1^\circ$.

Max. Input Speed: 2,000 Rpm.

Greased for Life: Shell Gadus S2 V220AD 2.

Testing in your application is necessary.
You will need to assess duty cycles and confirm
gearbox suitability with your own calculations.
All figures listed are to be used for guidance only.

Output Torque Nm

RPM Input	Reduction Ratio			
	1:1	2:1	3:1	4:1
2000	0.4	0.2	0.5	0.8
1000	0.5	0.3	0.5	0.9
500	0.5	0.3	0.6	1.1
200	0.6	0.4	0.7	1.3
100	0.7	0.4	0.8	1.4
50	0.8	0.4	0.9	1.6
10	1.0	0.6	1.2	2.0

ondrives.us

☎ 1-888-260-7466

📠 516-771-6444

💻 sales@ondrivesus.com

🌐 www.ondrivesus.com

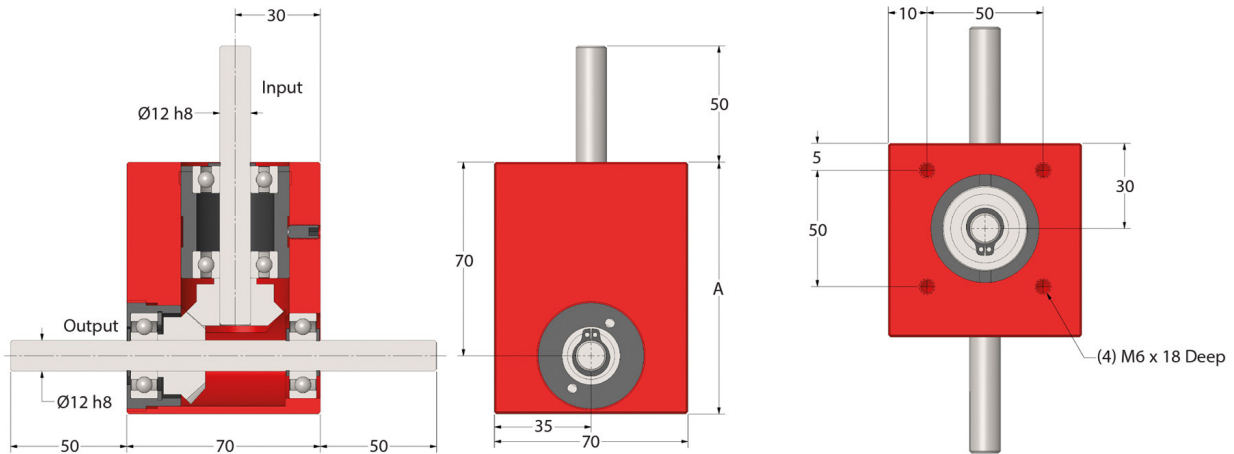
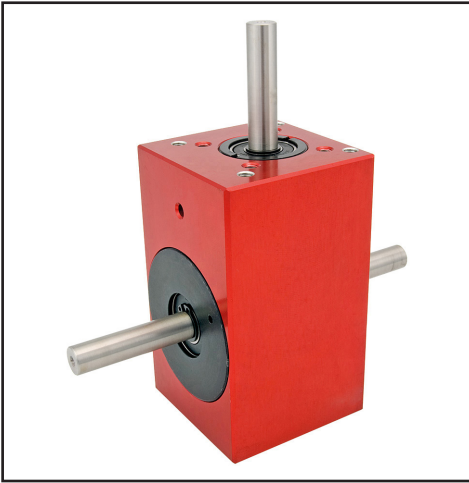
BL15

GEARBOXES

BL15

Bevel Tee Gearbox

Right Angled Drive 1.1 – 12 Nm **1:1 - 4:1**



Part Number	Ratio	Efficiency at 1000 Rpm	A
BL15-1	1:1	88%	90
BL15-2	2:1	88%	105
BL15-3	3:1	88%	110
BL15-4	4:1	88%	120
BL15-XH	1:1 - 4:1	Hardened Gears (=Nm x 2)	

Weight: 1.51 kg (1:1), 1.75 kg (2:1), 2.04 kg (3:1), 2.14 kg (4:1)

Backlash: $\approx 1^\circ$.

Max. Input Speed: 2,000 Rpm.

Greased for Life: Shell Gadus S2 V220AD 2.

Testing in your application is necessary.
You will need to assess duty cycles and confirm
gearbox suitability with your own calculations.
All figures listed are to be used for guidance only.

Output Torque Nm

RPM Input	Reduction Ratio			
	1:1	2:1	3:1	4:1
2000	2.0	1.1	2.3	2.2
1000	2.3	1.2	2.6	2.5
500	2.7	1.4	3.0	2.8
200	3.2	1.7	3.6	3.4
100	3.5	2.0	4.0	3.7
50	3.9	2.2	4.5	4.2
10	5.0	2.9	6.0	5.5

ondrives.us

☎ 1-888-260-7466

📄 516-771-6444

💻 sales@ondrivesus.com

🌐 www.ondrivesus.com

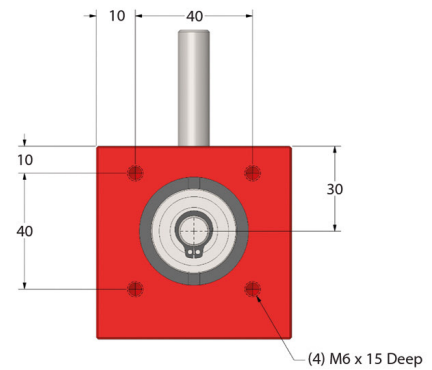
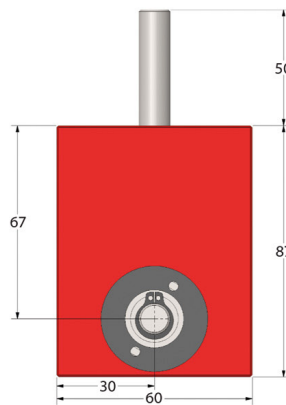
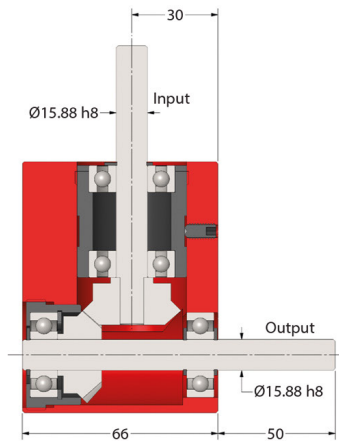
BL18

GEARBOXES

BL18

Bevel Tee Gearbox

Right Angled Drive & Hardened Teeth 4 – 10 Nm **1:1**



Part Number

BL18-XH-1

Ratio

1:1 Hardened

Efficiency at 1000 Rpm

88%

Weight: 1.3 kg

Backlash: $\approx 1^\circ$

Max. Input Speed: 2,000 Rpm.

Greased for Life: Shell Gadus S2 V220AD 2.

Testing in your application is necessary.
You will need to assess duty cycles and confirm
gearbox suitability with your own calculations.
All figures listed are to be used for guidance only.

Output Torque Nm

RPM	Reduction Ratio
Input	1:1 Hardened
2000	4.0
1000	4.6
500	5.4
200	6.4
100	7.0
50	7.8
10	10.0

ondrives.us

1-888-260-7466

516-771-6444

sales@ondrivesus.com

www.ondrivesus.com