

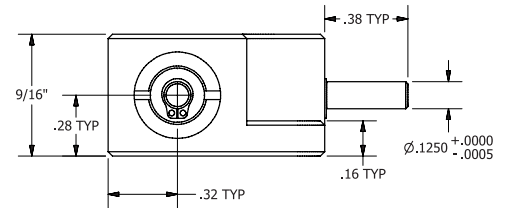
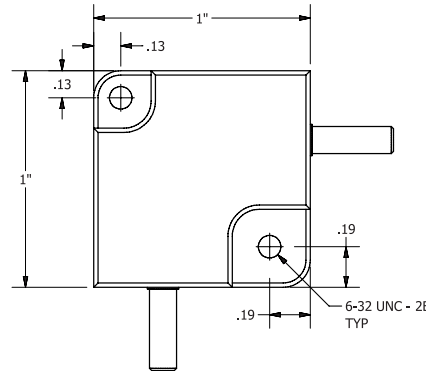
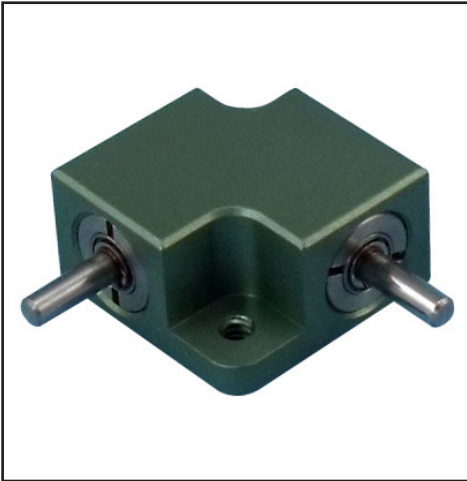
BG16

GEARBOXES

BG16

1:1 Gearboxes

Uniquely rated so you can balance Torque to RPM to Life



BGH16-1 + BGH16-1A (Low Backlash)

LIFETIME (hrs) as a FUNCTION of RPM & TORQUE						
Torque	RPM					
In-oz	50	100	200	500	1000	2000
4	20,000	20,000	20,000	20,000	20,000	11,700
4.5	20,000	20,000	20,000	9,100	4,000	1,700
5	20,000	9,500	4,500	1,650	790	370
5.5	9,500	4,700	2,300	880	420	190
6	5,250	2,500	1,250	480	230	100
6.5	3,100	1,500	750	280	130	60
7	940	940	450	170	80	40

2,000 RPM Maximum
Standard Backlash of 1°

Torque from 4 to 7 inch*ounces

Application rated for optimum operation and cost
You can balance Torque to RPM and Operating Life
Backlash 1°

Low Backlash 1/2°

Weight of only 0.07 lb.

RPM to 2,000

Temp range -5° F to +175° F, optional to -40° F

Made in USA with American CNC machines

Materials

416 Stainless Steel Shafts
Anodized Aluminum Housing
Sealed Steel Ball Bearings
Greased for life: Shell Alvania EP2. Cold temp. grease optional

Additional Information

Calculations are based on an application factor of 1.25. They apply to a medium impact drive turning a uniform load or a uniform drive turning a moderate impact load. Life Time figures shown are for guidance only. Testing in your application is required. You will need to assess duty cycles and confirm suitability with your own calculations.

Exclusive 24 Month Warranty!

See our website for CAD files

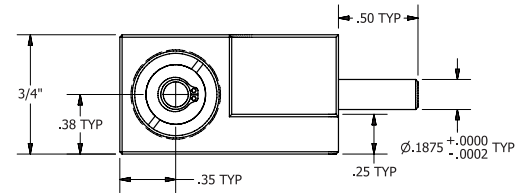
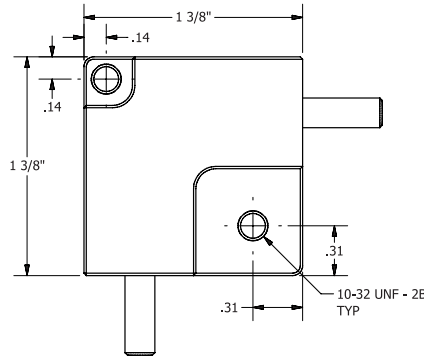
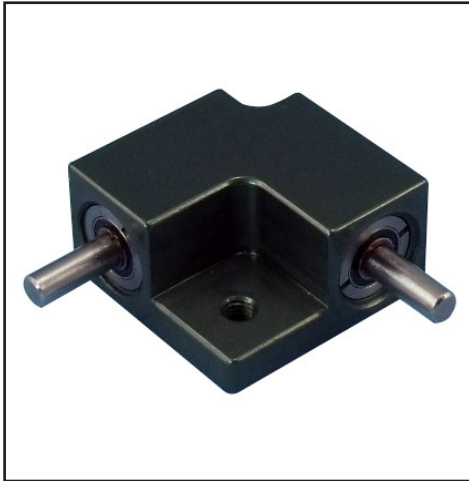
BG19

GEARBOXES

BG19

1:1 Gearboxes

Uniquely rated so you can balance Torque to RPM to Life



BGH19-1 + BGH19-1A (Low Backlash)

LIFETIME (hrs) as a FUNCTION of RPM & TORQUE						
Torque	RPM					
	50	100	200	500	1000	2000
17	20,000	20,000	20,000	20,000	20,000	10,000
18	20,000	20,000	20,000	20,000	11,000	4,500
19	20,000	20,000	20,000	10,000	4,500	1,900
20	20,000	20,000	12,000	4,500	2,000	800
21	20,000	10,000	5,500	1,900	900	400
22	14,000	7,000	3,300	1,300	620	280
23	10,500	5,000	2,500	950	450	220

2,000 RPM Maximum
Standard Backlash of 1°

Additional Information

Calculations are based on an application factor of 1.25. They apply to a medium impact drive turning a uniform load or a uniform drive turning a moderate impact load. Life Time figures shown are for guidance only. Testing in your application is required. You will need to assess duty cycles and confirm suitability with your own calculations.

Torque from 17 to 23 inch*ounces

Application rated for optimum operation and cost
You can balance Torque to RPM and Operating Life
Backlash 1°

Low Backlash 1/2°

Weight of only 0.16 lb.

RPM to 2000

Temp range -5° F to +175° F, -40° F grease optional

Made in USA with American CNC machines

Materials

303 Stainless Steel Shafts
Anodized Aluminum Housing
Sealed Steel Ball Bearings
Greased for life: Shell Alvania EP2. Cold temp. grease optional

Exclusive 24 Month Warranty!

See our website for CAD files

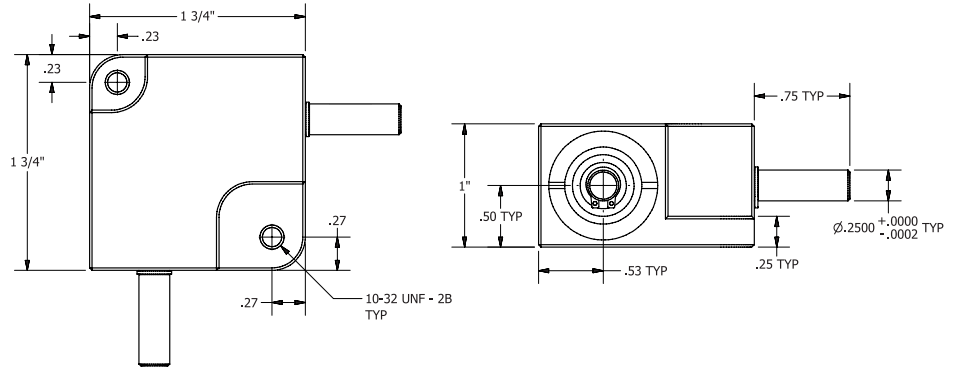
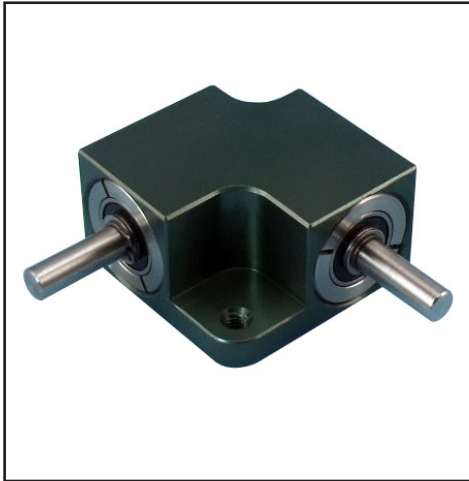
BG24

GEARBOXES

BG24

1:1 Gearboxes

Uniquely rated so you can balance Torque to RPM to Life



BGH24-1 + BGH24-1A (Low Backlash)

LIFETIME (hrs) as a FUNCTION of RPM & TORQUE							
Torque	RPM						
	In-lb	50	100	200	500	1000	2000
6		20,000	20,000	20,000	20,000	20,000	20,000
7		20,000	20,000	20,000	20,000	20,000	16,000
8		20,000	20,000	20,000	10,500	4,500	1,800
9		20,000	10,000	4,600	1,650	750	340
10		9,100	4,500	2,150	810	480	175
11		4,900	2,400	1,200	430	200	90
12		2,700	1,330	640	240	110	50

2,000 RPM Maximum
Standard Backlash of 1°

Additional Information

Calculations are based on an application factor of 1.25. They apply to a medium impact drive turning a uniform load or a uniform drive turning a moderate impact load. Life Time figures shown are for guidance only. Testing in your application is required. You will need to assess duty cycles and confirm suitability with your own calculations.

BGSH24-1 + BGSH24-1A (Low Backlash)

LIFETIME (hrs) as a FUNCTION of RPM & TORQUE								
Torque	RPM							
	In-lb	50	100	200	500	1000	2000	3000
15		20,000	20,000	20,000	20,000	20,000	20,000	14,300
16		20,000	20,000	20,000	20,000	20,000	9,000	5,000
17		20,000	20,000	20,000	20,000	8,600	3,300	1,860
18		20,000	20,000	20,000	8,200	3,400	1,320	730
19		20,000	20,000	10,000	3,400	1,400	550	305

3,000 RPM Maximum
Standard Backlash of 1° 1/2° Backlash Available

Torque from 6 to 19 inch* pounds

Application rated for optimum operation and cost
You can balance Torque to RPM and Operating Life
Backlash 1°

Low Backlash 1/2°

Weight of only 0.46 lb.

RPM to 3,000

Temp range -5° F to +175° F, -40° F grease optional

Made in USA with American CNC machines

Materials

303 Stainless Steel Shafts

Anodized Aluminum Housing

Sealed Steel Ball Bearings

Greased for life: Shell Alvania EP2. Cold temp. grease optional

Exclusive 24 Month Warranty!

See our website for CAD files