

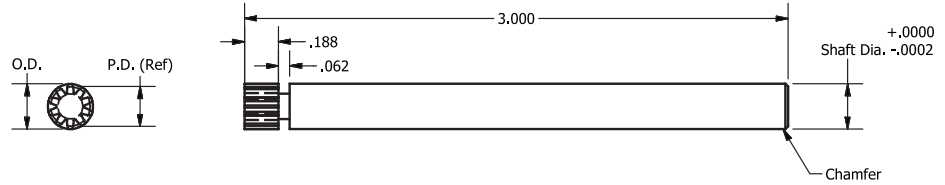
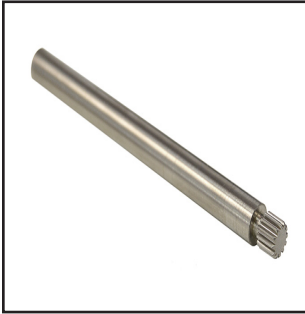
SG-PS

# SHAFTS

## Precision Pinion Shafts

Type S - Small Pitch Diameters

SG-PS



20° Pressure Angle  
A.G.M.A. Quality 10  
303 Stainless Steel

Gear O.D. is equal or smaller than shaft Dia.

Part Number	Pitch	Teeth	Shaft Dia.	Pitch Dia.	O.D.	Type
SG48PS4S-10	48	10	0.2497	0.2083	0.250	S
SG64PS4S-12	64	12	0.2497	0.1875	0.219	S
SG64PS4S-14	64	14	0.2497	0.2188	0.250	S
SG72PS3S-10	72	10	0.1872	0.1389	0.167	S
SG72PS4S-14	72	14	0.2497	0.1944	0.222	S
SG72PS4S-16	72	16	0.2497	0.2222	0.250	S
SG80PS3S-10	80	10	0.1872	0.1250	0.150	S
SG80PS4S-10	80	10	0.2497	0.1250	0.150	S
SG80PS3S-11	80	11	0.1872	0.1375	0.163	S
SG80PS4S-12	80	12	0.2497	0.1500	0.175	S
SG80PS4S-14	80	14	0.2497	0.1750	0.200	S
SG80PS4S-16	80	16	0.2497	0.2000	0.225	S
SG80PS4S-18	80	18	0.2497	0.2250	0.250	S
SG96PS2S-10	96	10	0.1247	0.1042	0.125	S
SG96PS3S-10	96	10	0.1872	0.1042	0.125	S
SG96PS3S-11	96	11	0.1872	0.1146	0.135	S
SG96PS3S-12	96	12	0.1872	0.1250	0.146	S
SG96PS3S-14	96	14	0.1872	0.1458	0.167	S
SG96PS4S-16	96	16	0.2497	0.1667	0.188	S
SG96PS4S-18	96	18	0.2497	0.1875	0.208	S
SG96PS4S-20	96	20	0.2497	0.2083	0.229	S
SG120PS2S-12	120	12	0.1247	0.1000	0.117	S

Other numbers of teeth are available on request

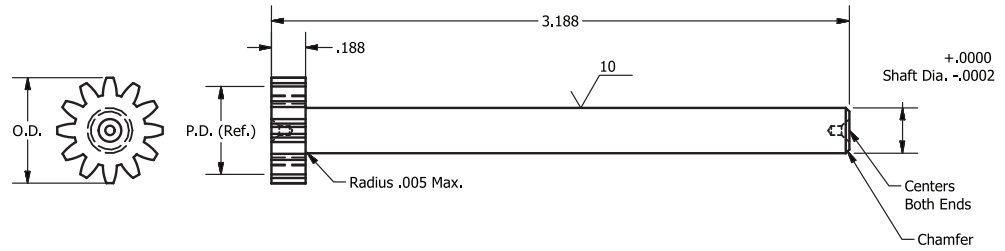
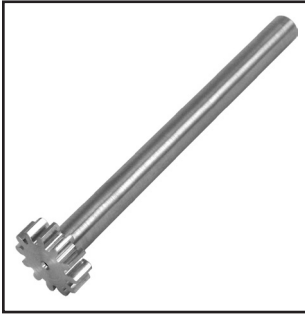
SG-PSH

# SHAFTS

## Precision Pinion Shafts

Type H - Large Pitch Diameters

SG-PSH



20° Pressure Angle

A.G.M.A. Quality 10

303 Stainless Steel

Gear O.D. is larger than shaft Dia.

Part Number	Pitch	Teeth	Shaft Dia.	Pitch Dia.	O.D.	Type
SG24PSH4S-10	24	10	0.2497	0.4167	0.500	H
SG24PSH4S-12	24	12	0.2497	0.5000	0.583	H
SG32PSH4S-12	32	12	0.2497	0.3750	0.438	H
SG32PSH4S-14	32	14	0.2497	0.4375	0.500	H
SG32PSH4S-16	32	16	0.2497	0.5000	0.563	H
SG48PSH3S-12	48	12	0.1872	0.2500	0.292	H
SG48PSH4S-12	48	12	0.2497	0.2500	0.292	H
SG48PSH4S-14	48	14	0.2497	0.2917	0.333	H
SG48PSH4S-16	48	16	0.2497	0.3333	0.375	H
SG48PSH3S-18	48	18	0.1872	0.3750	0.417	H
SG48PSH4S-18	48	18	0.2497	0.3750	0.417	H
SG48PSH4S-20	48	20	0.2497	0.4167	0.458	H
SG48PSH4S-24	48	24	0.2497	0.5000	0.542	H
SG64PSH2S-16	64	16	0.1247	0.2500	0.281	H
SG64PSH3S-16	64	16	0.1872	0.2500	0.281	H
SG64PSH4S-16	64	16	0.2497	0.2500	0.281	H
SG64PSH4S-18	64	18	0.2497	0.2813	0.313	H
SG64PSH2S-20	64	20	0.1247	0.3125	0.344	H
SG64PSH3S-20	64	20	0.1872	0.3125	0.344	H
SG64PSH4S-20	64	20	0.2497	0.3125	0.344	H
SG64PSH4S-22	64	22	0.2497	0.3438	0.375	H
SG64PSH4S-24	64	24	0.2497	0.3750	0.406	H
SG72PSH2S-18	72	18	0.1247	0.2500	0.278	H
SG72PSH3S-18	72	18	0.1872	0.2500	0.278	H
SG72PSH2S-24	72	24	0.1247	0.3333	0.361	H
SG72PSH3S-24	72	24	0.1872	0.3333	0.361	H
SG80PSH2S-20	80	20	0.1247	0.2500	0.275	H
SG80PSH3S-20	80	20	0.1872	0.2500	0.275	H
SG96PSH2S-24	96	24	0.1247	0.2500	0.271	H
SG96PSH2S-32	96	32	0.1247	0.3333	0.354	H

1-888-260-7466

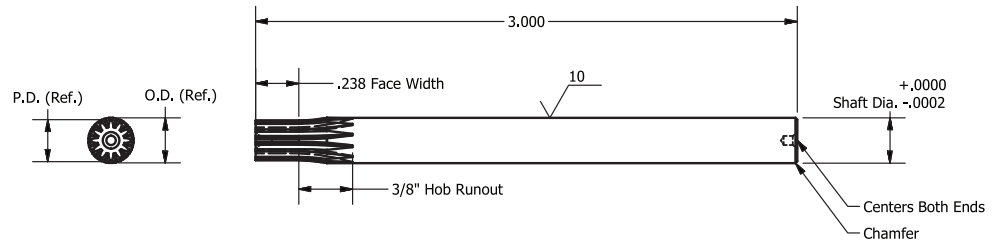
516-771-6444

sales@ondrivesus.com

www.ondrivesus.com

## Precision Pinion Shafts

Type R - Enlarged Pitch Diameters



20° Pressure Angle  
A.G.M.A. Quality 10  
303 Stainless Steel

## Enlarged Pitch Diameters

Part Number	Pitch	Teeth	Shaft Dia.	Pitch Dia.	O.D.	Type
SG48PSR5S-10	48	10	0.3122	0.2256	0.267	R
SG48PSR5S-11	48	11	0.3122	0.2440	0.285	R
SG48PSR5S-12	48	12	0.3122	0.2624	0.304	R
SG64PSR4S-10	64	10	0.2497	0.1692	0.200	R
SG64PSR4S-11	64	11	0.2497	0.1832	0.124	R
SG64PSR4S-12	64	12	0.2497	0.1968	0.228	R
SG64PSR4S-13	64	13	0.2497	0.2106	0.241	R
SG64PSR5S-15	64	15	0.3122	0.2382	0.269	R
SG72PSR3S-10	72	10	0.1872	0.1504	0.178	R
SG72PSR4S-12	72	12	0.2497	0.1750	0.202	R
SG72PSR4S-15	72	15	0.2497	0.2117	0.239	R
SG96PSR3S-10	96	10	0.1872	0.1128	0.133	R
SG96PSR3S-11	96	11	0.1872	0.1220	0.142	R
SG96PSR3S-12	96	12	0.1872	0.1312	0.152	R
SG96PSR3S-13	96	13	0.1872	0.1404	0.161	R
SG96PSR3S-14	96	14	0.1872	0.1496	0.170	R
SG96PSR3S-15	96	15	0.1872	0.1588	0.179	R
SG96PSR3S-16	96	16	0.1872	0.1680	0.187	R
SG96PSR4S-17	96	17	0.2497	0.1772	0.198	R
SG120PSR2S-10	120	10	0.1247	0.0902	0.106	R
SG120PSR2S-12	120	12	0.1247	0.1050	0.121	R
SG120PSR3S-15	120	15	0.1872	0.1270	0.149	R
SG120PSR3S-17	120	17	0.1872	0.1418	0.158	R

Other numbers of teeth are available on request

\*Enlarged P.D. & O.D., use for calculating center distances.

Use number of teeth to calculate ratios.