

40DP

TIMING

40DP Pulleys

.0816 Pitch -- For 3/16" Wide Belts

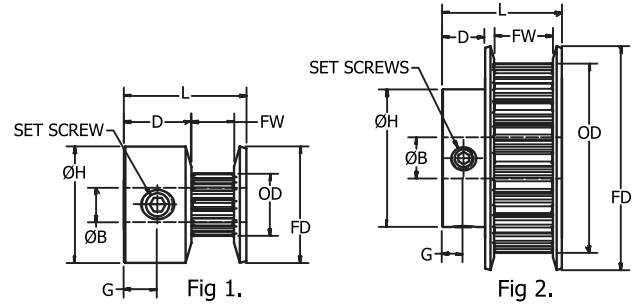
40DP



.0816 Circular Pitch

Materials

Aluminum
 Finish: Clear Anodize
 Double Flange
 2 set screws @ 90°
 (10 to 16 groove pulleys have 1 set screw)



Use 40DP018 series belts

Part Number	Fig No.	No. of Grooves	Pitch Dia.	O.D.	B Bore Ø +0.001	H Hub Ø ±1/64	D Hub Lgth.	L Lgth. ±1/64	FD ±1/64	FW	G
40DP18A-13DP-010	1	10	0.260	0.246	0.094	0.43	0.23	0.50	0.43	0.22	0.11
40DP18A-16DP-010	1	10	0.260	0.246	0.125	0.43	0.23	0.50	0.43	0.22	0.11
40DP18A-13DP-011	1	11	0.286	0.272	0.094	0.45	0.23	0.50	0.45	0.22	0.11
40DP18A-16DP-011	1	11	0.286	0.272	0.125	0.45	0.23	0.50	0.45	0.22	0.11
40DP18A-13DP-012	1	12	0.312	0.298	0.094	0.48	0.23	0.50	0.48	0.22	0.11
40DP18A-16DP-012	1	12	0.312	0.298	0.125	0.48	0.23	0.50	0.48	0.22	0.11
40DP18A-16DP-013	1	13	0.338	0.324	0.125	0.51	0.23	0.50	0.51	0.22	0.11
40DP18A-16DP-014	1	14	0.364	0.350	0.125	0.53	0.23	0.50	0.53	0.22	0.11
40DP18A-16DP-015	1	15	0.390	0.376	0.125	0.56	0.23	0.50	0.56	0.22	0.11
40DP18A-19DP-015	1	15	0.390	0.376	0.1875	0.56	0.23	0.50	0.56	0.22	0.11
40DP18A-16DP-016	1	16	0.416	0.402	0.125	0.58	0.23	0.50	0.58	0.22	0.11
40DP18A-19DP-016	1	16	0.416	0.402	0.1875	0.58	0.23	0.50	0.58	0.22	0.11
40DP18A-16DP-018	2	18	0.468	0.454	0.125	0.31	0.23	0.56	0.64	0.22	0.11
40DP18A-19DP-018	2	18	0.468	0.454	0.1875	0.31	0.23	0.56	0.64	0.22	0.11
40DP18A-24DP-018	1	18	0.468	0.454	0.250	0.64	0.23	0.50	0.64	0.22	0.11
40DP18A-16DP-020	2	20	0.520	0.506	0.125	0.36	0.23	0.56	0.69	0.22	0.11
40DP18A-19DP-020	2	20	0.520	0.506	0.1875	0.36	0.23	0.56	0.69	0.22	0.11
40DP18A-24DP-020	1	20	0.520	0.506	0.250	0.69	0.23	0.50	0.69	0.22	0.11
40DP18A-16DP-021	2	21	0.546	0.532	0.125	0.39	0.23	0.56	0.71	0.22	0.11
40DP18A-19DP-021	2	21	0.546	0.532	0.1875	0.39	0.23	0.56	0.71	0.22	0.11
40DP18A-24DP-021	1	21	0.546	0.532	0.250	0.71	0.23	0.50	0.71	0.22	0.11
40DP18A-16DP-022	2	22	0.572	0.558	0.125	0.39	0.23	0.56	0.74	0.22	0.11
40DP18A-19DP-022	2	22	0.572	0.558	0.1875	0.39	0.23	0.56	0.74	0.22	0.11
40DP18A-24DP-022	1	22	0.572	0.558	0.250	0.74	0.23	0.50	0.74	0.22	0.11
40DP18A-19DP-024	2	24	0.624	0.610	0.1875	0.44	0.30	0.63	0.79	0.22	0.16
40DP18A-24DP-024	2	24	0.624	0.610	0.250	0.44	0.30	0.63	0.79	0.22	0.16
40DP18A-19DP-025	2	25	0.650	0.636	0.1875	0.47	0.30	0.63	0.82	0.22	0.16
40DP18A-24DP-025	2	25	0.650	0.636	0.250	0.47	0.30	0.63	0.82	0.22	0.16
40DP18A-19DP-026	2	26	0.676	0.662	0.1875	0.49	0.30	0.63	0.84	0.22	0.16
40DP18A-24DP-026	2	26	0.676	0.662	0.250	0.49	0.30	0.63	0.84	0.22	0.16
40DP18A-19DP-028	2	28	0.728	0.714	0.1875	0.49	0.30	0.63	0.90	0.22	0.16
40DP18A-24DP-028	2	28	0.728	0.714	0.250	0.49	0.30	0.63	0.90	0.22	0.16

Continued on next page

40DP

TIMING

40DP Pulleys

.0816 Pitch -- For 3/16" Wide Belts

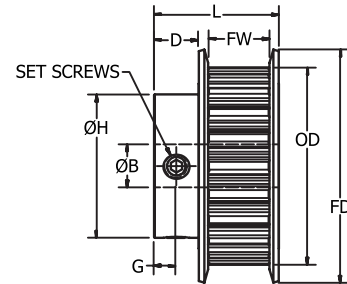
40DP



.0816 Circular Pitch

Materials

Aluminum
Finish: Clear Anodize
 Double Flange
 2 set screws @ 90°



Use 40DP018 series belts

Continued from previous page

Part Number	No. of Grooves	Pitch Dia.	O.D.	B Bore Ø +0.001	H Hub Ø ±1/64	D Hub Lgth.	L Lgth. ±1/64	FD ±1/64	FW	G
40DP18A-19DP-030	30	0.780	0.766	0.1875	0.55	0.30	0.63	0.95	0.22	0.16
40DP18A-24DP-030	30	0.780	0.766	0.250	0.55	0.30	0.63	0.95	0.22	0.16
40DP18A-19DP-032	32	0.832	0.818	0.1875	0.60	0.30	0.63	1.00	0.22	0.16
40DP18A-24DP-032	32	0.832	0.818	0.250	0.60	0.30	0.63	1.00	0.22	0.16
40DP18A-19DP-033	33	0.858	0.844	0.1875	0.62	0.30	0.63	1.03	0.22	0.16
40DP18A-24DP-033	33	0.858	0.844	0.250	0.62	0.30	0.63	1.03	0.22	0.16
40DP18A-19DP-034	34	0.884	0.870	0.1875	0.62	0.30	0.63	1.05	0.22	0.16
40DP18A-24DP-034	34	0.884	0.870	0.250	0.62	0.30	0.63	1.05	0.22	0.16
40DP18A-19DP-035	35	0.910	0.896	0.1875	0.65	0.30	0.63	1.08	0.22	0.16
40DP18A-24DP-035	35	0.910	0.896	0.250	0.65	0.30	0.63	1.08	0.22	0.16
40DP18A-19DP-036	36	0.936	0.922	0.1875	0.68	0.30	0.63	1.11	0.22	0.16
40DP18A-24DP-036	36	0.936	0.922	0.250	0.68	0.30	0.63	1.11	0.22	0.16
40DP18A-24DP-038	38	0.988	0.974	0.250	0.73	0.30	0.63	1.16	0.22	0.16
40DP18A-27DP-038	38	0.988	0.974	0.3125	0.73	0.30	0.63	1.16	0.22	0.16
40DP18A-24DP-040	40	1.040	1.026	0.250	0.75	0.33	0.66	1.21	0.22	0.16
40DP18A-27DP-040	40	1.040	1.026	0.3125	0.75	0.33	0.66	1.21	0.22	0.16
40DP18A-24DP-042	42	1.092	1.078	0.250	0.81	0.33	0.66	1.26	0.22	0.16
40DP18A-27DP-042	42	1.092	1.078	0.3125	0.81	0.33	0.66	1.26	0.22	0.16
40DP18A-24DP-044	44	1.144	1.130	0.250	0.86	0.33	0.66	1.32	0.22	0.16
40DP18A-27DP-044	44	1.144	1.130	0.3125	0.86	0.33	0.66	1.32	0.22	0.16
40DP18A-24DP-045	45	1.170	1.156	0.250	0.88	0.33	0.66	1.34	0.22	0.16
40DP18A-27DP-045	45	1.170	1.156	0.3125	0.88	0.33	0.66	1.34	0.22	0.16
40DP18A-24DP-048	48	1.248	1.234	0.250	0.93	0.33	0.66	1.42	0.22	0.16
40DP18A-27DP-048	48	1.248	1.234	0.3125	0.93	0.33	0.66	1.42	0.22	0.16
40DP18A-24DP-050	50	1.300	1.286	0.250	0.99	0.33	0.66	1.47	0.22	0.16
40DP18A-27DP-050	50	1.300	1.286	0.3125	0.99	0.33	0.66	1.47	0.22	0.16
40DP18A-24DP-054	54	1.404	1.390	0.250	1.07	0.33	0.66	1.58	0.22	0.16
40DP18A-27DP-054	54	1.404	1.390	0.3125	1.07	0.33	0.66	1.58	0.22	0.16
40DP18A-24DP-060	60	1.560	1.546	0.250	1.22	0.33	0.66	1.73	0.22	0.16
40DP18A-27DP-060	60	1.560	1.546	0.3125	1.22	0.33	0.66	1.73	0.22	0.16

40DP

TIMING

40DP

40DP Pulleys

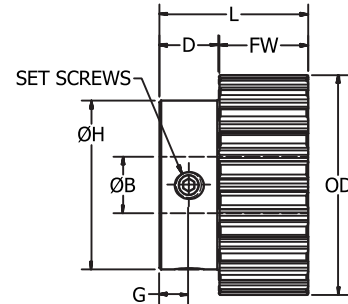
.0816 Pitch -- For 3/16" Wide Belts



.0816 Circular Pitch

Materials

Aluminum
Finish: Clear Anodize
 No Flange
 2 set screws @ 90°



Use 40DP018 series belts

Continued from previous page

Part Number	No. of Grooves	Pitch Dia.	O.D.	B Bore Ø +0.001	H Hub Ø ±1/64	D Hub Lgth.	L Lgth. ±1/64	FW	G
40DP18A-19NP-020	20	0.520	0.506	0.1875	0.44	0.38	0.75	0.38	0.19
40DP18A-24NP-020	20	0.520	0.506	0.250	0.44	0.38	0.75	0.38	0.19
40DP18A-19NP-024	24	0.624	0.610	0.1875	0.50	0.38	0.75	0.38	0.19
40DP18A-24NP-024	24	0.624	0.610	0.250	0.50	0.38	0.75	0.38	0.19
40DP18A-24NP-030	30	0.780	0.766	0.250	0.66	0.38	0.75	0.38	0.19
40DP18A-24NP-040	40	1.040	1.026	0.250	0.67	0.38	0.75	0.38	0.19
40DP18A-24NP-045	45	1.170	1.156	0.250	0.80	0.38	0.75	0.38	0.19
40DP18A-24NP-050	50	1.300	1.286	0.250	0.93	0.38	0.75	0.38	0.19
40DP18A-27NP-050	50	1.300	1.286	0.3125	0.93	0.38	0.75	0.38	0.19
40DP18A-24NP-060	60	1.560	1.546	0.250	1.19	0.38	0.75	0.38	0.19
40DP18A-27NP-060	60	1.560	1.546	0.3125	1.19	0.38	0.75	0.38	0.19
40DP18A-24NP-070	70	1.820	1.806	0.250	1.15	0.38	0.75	0.38	0.19
40DP18A-31NP-070	70	1.820	1.806	0.375	1.15	0.38	0.75	0.38	0.19
40DP18A-24NP-072	72	1.872	1.858	0.250	1.20	0.38	0.75	0.38	0.19
40DP18A-31NP-072	72	1.872	1.858	0.375	1.20	0.38	0.75	0.38	0.19
40DP18A-24NP-075	75	1.950	1.936	0.250	1.27	0.38	0.75	0.38	0.19
40DP18A-31NP-075	75	1.950	1.936	0.375	1.27	0.38	0.75	0.38	0.19
40DP18A-24NP-080	80	2.080	2.066	0.250	1.40	0.38	0.75	0.38	0.19
40DP18A-31NP-080	80	2.080	2.066	0.375	1.40	0.38	0.75	0.38	0.19
40DP18A-24NP-084	84	2.184	2.170	0.250	1.50	0.38	0.75	0.38	0.19
40DP18A-31NP-084	84	2.184	2.170	0.375	1.50	0.38	0.75	0.38	0.19
40DP18A-24NP-088	88	2.288	2.274	0.250	1.50	0.38	0.75	0.38	0.19
40DP18A-31NP-088	88	2.288	2.274	0.375	1.50	0.38	0.75	0.38	0.19
40DP18A-24NP-090	90	2.340	2.326	0.250	1.50	0.38	0.75	0.38	0.19
40DP18A-31NP-090	90	2.340	2.326	0.375	1.50	0.38	0.75	0.38	0.19
40DP18A-24NP-096	96	2.496	2.482	0.250	1.50	0.38	0.75	0.38	0.19
40DP18A-31NP-096	96	2.496	2.482	0.375	1.50	0.38	0.75	0.38	0.19
40DP18A-24NP-098	98	2.548	2.534	0.250	1.50	0.38	0.75	0.38	0.19
40DP18A-31NP-098	98	2.548	2.534	0.375	1.50	0.38	0.75	0.38	0.19
40DP18A-27NP-100	100	2.600	2.586	0.3125	1.50	0.38	0.75	0.38	0.19
40DP18A-31NP-100	100	2.600	2.586	0.375	1.50	0.38	0.75	0.38	0.19
40DP18A-27NP-108	108	2.808	2.794	0.3125	1.50	0.38	0.75	0.38	0.19
40DP18A-31NP-108	108	2.808	2.794	0.375	1.50	0.38	0.75	0.38	0.19
40DP18A-27NP-120	120	3.120	3.106	0.3125	1.50	0.38	0.75	0.38	0.19
40DP18A-31NP-120	120	3.120	3.106	0.375	1.50	0.38	0.75	0.38	0.19

40DP

TIMING

40DP Pulleys

.0816 Pitch -- For 5/16" Wide Belts

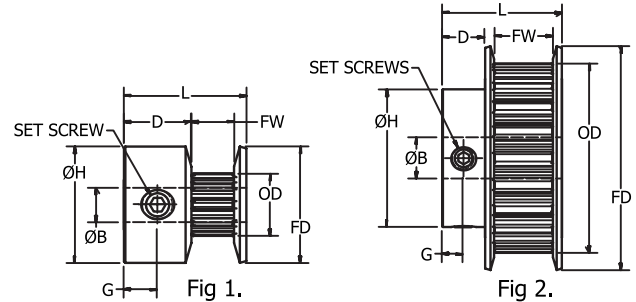
40DP



.0816 Circular Pitch

Materials

Aluminum
 Finish: Clear Anodize
 Double Flange
 2 set screws @ 90°
 (10 to 16 groove pulleys have 1 set screw)



Use 40DP031 series belts

Part Number	Fig No.	No. of Grooves	Pitch Dia.	O.D.	B Bore Ø +0.001	H Hub Ø ±1/64	D Hub Lgth.	L Lgth. ±1/64	FD ±1/64	FW	G
40DP31A-13DP-010	1	10	0.260	0.246	0.094	0.43	0.23	0.63	0.43	0.35	0.11
40DP31A-16DP-010	1	10	0.260	0.246	0.125	0.43	0.23	0.63	0.43	0.35	0.11
40DP31A-13DP-011	1	11	0.286	0.272	0.094	0.45	0.23	0.63	0.45	0.35	0.11
40DP31A-16DP-011	1	11	0.286	0.272	0.125	0.45	0.23	0.63	0.45	0.35	0.11
40DP31A-19DP-012	1	12	0.312	0.298	0.094	0.48	0.23	0.63	0.48	0.35	0.11
40DP31A-16DP-012	1	12	0.312	0.298	0.125	0.48	0.23	0.63	0.48	0.35	0.11
40DP31A-16DP-013	1	13	0.338	0.324	0.125	0.51	0.23	0.63	0.51	0.35	0.11
40DP31A-16DP-014	1	14	0.364	0.350	0.125	0.53	0.23	0.63	0.53	0.35	0.11
40DP31A-16DP-015	1	15	0.390	0.376	0.125	0.56	0.23	0.63	0.56	0.35	0.11
40DP31A-19DP-015	1	15	0.390	0.376	0.1875	0.56	0.23	0.63	0.56	0.35	0.11
40DP31A-16DP-016	1	16	0.416	0.402	0.125	0.58	0.23	0.63	0.58	0.35	0.11
40DP31A-19DP-016	1	16	0.416	0.402	0.1875	0.58	0.23	0.63	0.58	0.35	0.11
40DP31A-16DP-018	2	18	0.468	0.454	0.125	0.31	0.23	0.69	0.64	0.35	0.11
40DP31A-19DP-018	2	18	0.468	0.454	0.1875	0.31	0.23	0.69	0.64	0.35	0.11
40DP31A-24DP-018	1	18	0.468	0.454	0.250	0.64	0.23	0.63	0.64	0.35	0.11
40DP31A-16DP-020	2	20	0.520	0.506	0.125	0.36	0.23	0.69	0.69	0.35	0.11
40DP31A-19DP-020	2	20	0.520	0.506	0.1875	0.36	0.23	0.69	0.69	0.35	0.11
40DP31A-24DP-020	1	20	0.520	0.506	0.250	0.69	0.23	0.63	0.69	0.35	0.11
40DP31A-16DP-021	2	21	0.546	0.532	0.125	0.39	0.23	0.69	0.71	0.35	0.11
40DP31A-19DP-021	2	21	0.546	0.532	0.1875	0.39	0.23	0.69	0.71	0.35	0.11
40DP31A-24DP-021	1	21	0.546	0.532	0.250	0.71	0.23	0.63	0.71	0.35	0.11
40DP31A-16DP-022	2	22	0.572	0.558	0.125	0.39	0.23	0.69	0.74	0.35	0.11
40DP31A-19DP-022	2	22	0.572	0.558	0.1875	0.39	0.23	0.69	0.74	0.35	0.11
40DP31A-24DP-022	1	22	0.572	0.558	0.250	0.74	0.23	0.63	0.74	0.35	0.11
40DP31A-19DP-024	2	24	0.624	0.610	0.1875	0.44	0.30	0.75	0.79	0.35	0.16
40DP31A-24DP-024	2	24	0.624	0.610	0.250	0.44	0.30	0.75	0.79	0.35	0.16
40DP31A-19DP-025	2	25	0.650	0.636	0.1875	0.47	0.30	0.75	0.82	0.35	0.16
40DP31A-24DP-025	2	25	0.650	0.636	0.250	0.47	0.30	0.75	0.82	0.35	0.16
40DP31A-19DP-026	2	26	0.676	0.662	0.1875	0.49	0.30	0.75	0.84	0.35	0.16
40DP31A-24DP-026	2	26	0.676	0.662	0.250	0.49	0.30	0.75	0.84	0.35	0.16
40DP31A-19DP-028	2	28	0.728	0.714	0.1875	0.49	0.30	0.75	0.90	0.35	0.16
40DP31A-24DP-028	2	28	0.728	0.714	0.250	0.49	0.30	0.75	0.90	0.35	0.16

Continued on next page

40DP

TIMING

40DP Pulleys

.0816 Pitch -- For 5/16" Wide Belts

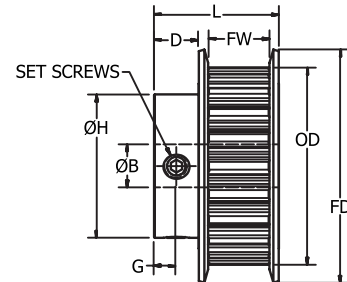
40DP



.0816 Circular Pitch

Materials

Aluminum
Finish: Clear Anodize
 Double Flange
 2 set screws @ 90°



Use 40DP031 series belts

Continued from previous page

Part Number	No. of Grooves	Pitch Dia.	O.D.	B Bore Ø +0.001	H Hub Ø ±1/64	D Hub Lgth.	L Lgth. ±1/64	FD ±1/64	FW	G
40DP31A-19DP-030	30	0.780	0.766	0.1875	0.55	0.30	0.75	0.95	0.35	0.16
40DP31A-24DP-030	30	0.780	0.766	0.250	0.55	0.30	0.75	0.95	0.35	0.16
40DP31A-19DP-032	32	0.832	0.818	0.1875	0.60	0.30	0.75	1.00	0.35	0.16
40DP31A-24DP-032	32	0.832	0.818	0.250	0.60	0.30	0.75	1.00	0.35	0.16
40DP31A-19DP-033	33	0.858	0.844	0.1875	0.62	0.30	0.75	1.03	0.35	0.16
40DP31A-24DP-033	33	0.858	0.844	0.250	0.62	0.30	0.75	1.03	0.35	0.16
40DP31A-19DP-034	34	0.884	0.870	0.1875	0.62	0.30	0.75	1.05	0.35	0.16
40DP31A-24DP-034	34	0.884	0.870	0.250	0.62	0.30	0.75	1.05	0.35	0.16
40DP31A-19DP-035	35	0.910	0.896	0.1875	0.65	0.30	0.75	1.08	0.11	0.16
40DP31A-24DP-035	35	0.910	0.896	0.250	0.65	0.30	0.75	1.08	0.11	0.16
40DP31A-19DP-036	36	0.936	0.922	0.1875	0.68	0.30	0.75	1.11	0.35	0.16
40DP31A-24DP-036	36	0.936	0.922	0.250	0.68	0.30	0.75	1.11	0.35	0.16
40DP31A-24DP-038	38	0.988	0.974	0.250	0.73	0.30	0.75	1.16	0.35	0.16
40DP31A-27DP-038	38	0.988	0.974	0.3125	0.73	0.30	0.75	1.16	0.35	0.16
40DP31A-24DP-040	40	1.040	1.026	0.250	0.75	0.31	0.78	1.21	0.35	0.16
40DP31A-27DP-040	40	1.040	1.026	0.3125	0.75	0.31	0.78	1.21	0.35	0.16
40DP31A-24DP-042	42	1.092	1.078	0.250	0.81	0.31	0.78	1.26	0.35	0.16
40DP31A-27DP-042	42	1.092	1.078	0.3125	0.81	0.31	0.78	1.26	0.35	0.16
40DP31A-24DP-044	44	1.144	1.130	0.250	0.86	0.31	0.78	1.32	0.35	0.16
40DP31A-27DP-044	44	1.144	1.130	0.3125	0.86	0.31	0.78	1.32	0.35	0.16
40DP31A-24DP-045	45	1.170	1.156	0.250	0.88	0.31	0.78	1.34	0.35	0.16
40DP31A-27DP-045	45	1.170	1.156	0.3125	0.88	0.31	0.78	1.34	0.35	0.16
40DP31A-24DP-048	48	1.248	1.234	0.250	0.93	0.31	0.78	1.42	0.35	0.16
40DP31A-27DP-048	48	1.248	1.234	0.3125	0.93	0.31	0.78	1.42	0.35	0.16
40DP31A-24DP-050	50	1.300	1.286	0.250	0.99	0.31	0.78	1.47	0.35	0.16
40DP31A-27DP-050	50	1.300	1.286	0.3125	0.99	0.31	0.78	1.47	0.35	0.16
40DP31A-24DP-054	54	1.404	1.390	0.250	1.07	0.31	0.78	1.58	0.35	0.16
40DP31A-27DP-054	54	1.404	1.390	0.3125	1.07	0.31	0.78	1.58	0.35	0.16
40DP31A-24DP-060	60	1.560	1.546	0.250	1.22	0.31	0.78	1.73	0.35	0.16
40DP31A-27DP-060	60	1.560	1.546	0.3125	1.22	0.31	0.78	1.73	0.35	0.16

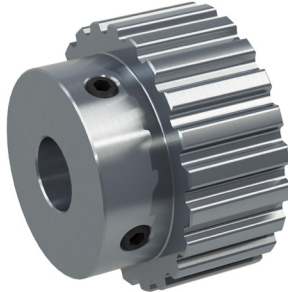
40DP

TIMING

40DP Pulleys

.0816 Pitch -- For 5/16" Wide Belts

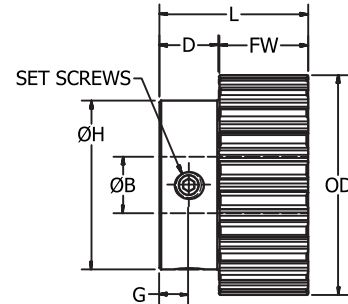
40DP



.0816 Circular Pitch

Materials

Aluminum
Finish: Clear Anodize
 No Flange
 2 set screws @ 90°



Use 40DP031 series belts

Continued from previous page

Part Number	No. of Grooves	Pitch Dia.	O.D.	B Bore Ø +0.001	H Hub Ø ±1/64	D Hub Lgth.	L Lgth. ±1/64	FW	G
40DP31A-19NP-020	20	0.520	0.506	0.1875	0.44	0.38	0.88	0.50	0.19
40DP31A-24NP-020	20	0.520	0.506	0.250	0.44	0.38	0.88	0.50	0.19
40DP31A-19NP-024	24	0.624	0.610	0.1875	0.50	0.38	0.88	0.50	0.19
40DP31A-24NP-024	24	0.624	0.610	0.250	0.50	0.38	0.88	0.50	0.19
40DP31A-24NP-030	30	0.780	0.766	0.250	0.66	0.38	0.88	0.50	0.19
40DP31A-24NP-040	40	1.040	1.026	0.250	0.67	0.38	0.88	0.50	0.19
40DP31A-24NP-045	45	1.170	1.156	0.250	0.80	0.38	0.88	0.50	0.19
40DP31A-24NP-050	50	1.300	1.286	0.250	0.93	0.38	0.88	0.50	0.19
40DP31A-27NP-050	50	1.300	1.286	0.3125	0.93	0.38	0.88	0.50	0.19
40DP31A-24NP-060	60	1.560	1.546	0.250	1.19	0.38	0.88	0.50	0.19
40DP31A-27NP-060	60	1.560	1.546	0.3125	1.19	0.38	0.88	0.50	0.19
40DP31A-24NP-070	70	1.820	1.806	0.250	1.15	0.38	0.88	0.50	0.19
40DP31A-31NP-070	70	1.820	1.806	0.375	1.15	0.38	0.88	0.50	0.19
40DP31A-24NP-072	72	1.872	1.858	0.250	1.20	0.38	0.88	0.50	0.19
40DP31A-31NP-072	72	1.872	1.858	0.375	1.20	0.38	0.88	0.50	0.19
40DP31A-24NP-075	75	1.950	1.936	0.250	1.27	0.38	0.88	0.50	0.19
40DP31A-31NP-075	75	1.950	1.936	0.375	1.27	0.38	0.88	0.50	0.19
40DP31A-24NP-080	80	2.080	2.066	0.250	1.40	0.38	0.88	0.50	0.19
40DP31A-31NP-080	80	2.080	2.066	0.375	1.40	0.38	0.88	0.50	0.19
40DP31A-24NP-084	84	2.184	2.170	0.250	1.50	0.38	0.88	0.50	0.19
40DP31A-31NP-084	84	2.184	2.170	0.375	1.50	0.38	0.88	0.50	0.19
40DP31A-24NP-088	88	2.288	2.274	0.250	1.50	0.38	0.88	0.50	0.19
40DP31A-31NP-088	88	2.288	2.274	0.375	1.50	0.38	0.88	0.50	0.19
40DP31A-24NP-090	90	2.340	2.326	0.250	1.50	0.38	0.88	0.50	0.19
40DP31A-31NP-090	90	2.340	2.326	0.375	1.50	0.38	0.88	0.50	0.19
40DP31A-24NP-096	96	2.496	2.482	0.250	1.50	0.38	0.88	0.50	0.19
40DP31A-31NP-096	96	2.496	2.482	0.375	1.50	0.38	0.88	0.50	0.19
40DP31A-24NP-098	98	2.548	2.534	0.250	1.50	0.38	0.88	0.50	0.19
40DP31A-31NP-098	98	2.548	2.534	0.375	1.50	0.38	0.88	0.50	0.19
40DP31A-27NP-100	100	2.600	2.586	0.3125	1.50	0.38	0.88	0.50	0.19
40DP31A-31NP-100	100	2.600	2.586	0.375	1.50	0.38	0.88	0.50	0.19
40DP31A-27NP-108	108	2.808	2.794	0.3125	1.50	0.38	0.88	0.50	0.19
40DP31A-31NP-108	108	2.808	2.794	0.375	1.50	0.38	0.88	0.50	0.19
40DP31A-27NP-110	110	2.860	2.846	0.3125	1.50	0.38	0.88	0.50	0.19
40DP31A-31NP-110	110	2.860	2.846	0.375	1.50	0.38	0.88	0.50	0.19
40DP31A-27NP-120	120	3.120	3.106	0.3125	1.50	0.38	0.88	0.50	0.19
40DP31A-31NP-120	120	3.120	3.106	0.375	1.50	0.38	0.88	0.50	0.19
40DP31A-31NP-130	130	3.380	3.366	0.375	1.63	0.38	0.88	0.50	0.19
40DP31A-31NP-140	140	3.640	3.626	0.375	1.75	0.38	0.88	0.50	0.19
40DP31A-31NP-150	150	3.900	3.886	0.375	2.00	0.38	0.88	0.50	0.19

MXL

TIMING

MXL Pulleys

.080" Pitch -- For 1/8" Wide Belts

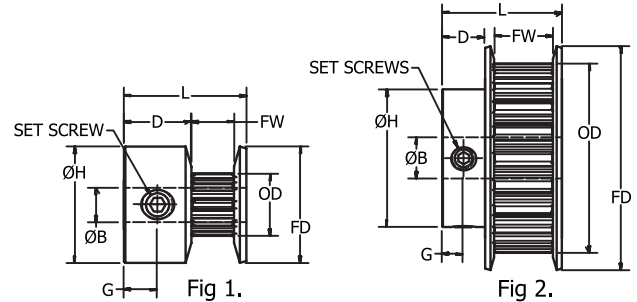
MXL



.0800 Circular Pitch

Materials

Aluminum
Finish: Clear Anodize
 Double Flange
 2 set screws @ 90°
 (10 to 16 groove pulleys have 1 set screw)



Use MXL012 series belts

Part Number	Fig No.	No. of Grooves	Pitch Dia.	O.D.	B Bore Ø +0.001	H Hub Ø ±1/64	D Hub Lgth.	L Lgth. ±1/64	FD ±1/64	FW	G
MXL12A-16DP-010	1	10	0.255	0.235	0.125	0.43	0.23	0.44	0.43	0.16	0.11
MXL12A-16DP-011	1	11	0.280	0.260	0.125	0.45	0.23	0.44	0.45	0.16	0.11
MXL12A-16DP-012	1	12	0.306	0.286	0.125	0.48	0.23	0.44	0.48	0.16	0.11
MXL12A-16DP-014	1	14	0.357	0.337	0.125	0.53	0.23	0.44	0.53	0.16	0.11
MXL12A-19DP-015	1	15	0.382	0.362	0.1875	0.56	0.23	0.44	0.56	0.16	0.11
MXL12A-19DP-016	1	16	0.407	0.387	0.1875	0.58	0.23	0.44	0.58	0.16	0.11
MXL12A-19DP-018	2	18	0.458	0.438	0.1875	0.31	0.22	0.48	0.64	0.16	0.11
MXL12A-24DP-018	1	18	0.458	0.438	0.250	0.64	0.23	0.44	0.64	0.16	0.11
MXL12A-19DP-020	2	20	0.509	0.489	0.1875	0.36	0.22	0.48	0.69	0.16	0.11
MXL12A-24DP-020	1	20	0.509	0.489	0.250	0.69	0.23	0.44	0.69	0.16	0.11
MXL12A-19DP-021	2	21	0.535	0.515	0.1875	0.39	0.22	0.48	0.71	0.16	0.11
MXL12A-24DP-021	1	21	0.535	0.515	0.250	0.71	0.23	0.44	0.71	0.16	0.11
MXL12A-19DP-022	2	22	0.560	0.540	0.1875	0.39	0.22	0.48	0.74	0.16	0.11
MXL12A-24DP-022	1	22	0.560	0.540	0.250	0.74	0.23	0.44	0.74	0.16	0.11
MXL12A-24DP-024	2	24	0.611	0.591	0.250	0.44	0.25	0.52	0.79	0.16	0.13
MXL12A-24DP-028	2	28	0.713	0.693	0.250	0.49	0.25	0.52	0.90	0.16	0.13
MXL12A-24DP-030	2	30	0.764	0.744	0.250	0.55	0.25	0.52	0.95	0.16	0.13
MXL12A-24DP-032	2	32	0.815	0.795	0.250	0.60	0.25	0.52	1.00	0.16	0.13
MXL12A-24DP-036	2	36	0.917	0.897	0.250	0.68	0.25	0.52	1.11	0.16	0.13
MXL12A-24DP-040	2	40	1.019	0.999	0.250	0.75	0.25	0.53	1.21	0.16	0.13
MXL12A-24DP-042	2	42	1.070	1.050	0.250	0.81	0.25	0.53	1.26	0.16	0.13
MXL12A-24DP-044	2	44	1.120	1.100	0.250	0.86	0.25	0.53	1.32	0.16	0.13
MXL12A-24DP-048	2	48	1.222	1.202	0.250	0.94	0.25	0.53	1.42	0.16	0.13
MXL12A-24DP-060	2	60	1.528	1.508	0.250	1.22	0.25	0.53	1.73	0.16	0.13

Continued on next page

MXL

TIMING

MXL Pulleys

.080" Pitch -- For 1/4" Wide Belts

MXL



.0800 Circular Pitch

Materials

Aluminum

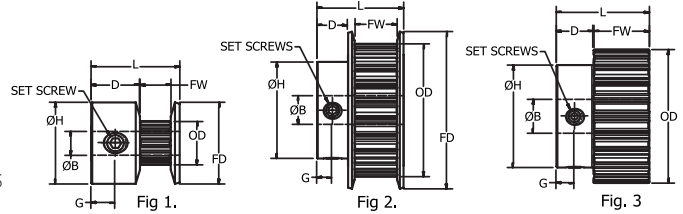
Finish: Clear Anodize

Double Flange &

No Flange

2 set screws @ 90°

(10 to 16 groove pulleys have 1 set screw)



Use MXL025 series belts

Part Number	Fig No.	No. of Grooves	Pitch Dia.	O.D.	B Bore Ø +0.001	H Hub Ø ±1/64	D Hub Lgth.	L Lgth. ±1/64	FD ±1/64	FW	G
MXL25A-16DP-010	1	10	0.255	0.235	0.125	0.43	0.23	0.56	0.43	0.29	0.11
MXL25A-16DP-011	1	11	0.280	0.260	0.125	0.45	0.23	0.56	0.45	0.29	0.11
MXL25A-16DP-012	1	12	0.306	0.286	0.125	0.48	0.23	0.56	0.48	0.29	0.11
MXL25A-16DP-014	1	14	0.357	0.337	0.125	0.53	0.23	0.56	0.53	0.29	0.11
MXL25A-19DP-015	1	15	0.382	0.362	0.1875	0.56	0.23	0.56	0.56	0.29	0.11
MXL25A-19DP-016	1	16	0.407	0.387	0.1875	0.58	0.23	0.56	0.58	0.29	0.11
MXL25A-19DP-018	2	18	0.458	0.438	0.1875	0.64	0.23	0.56	0.64	0.29	0.11
MXL25A-24DP-018	1	18	0.458	0.438	0.250	0.31	0.23	0.63	0.64	0.29	0.11
MXL25A-19DP-020	2	20	0.509	0.489	0.1875	0.69	0.23	0.56	0.69	0.29	0.11
MXL25A-24DP-020	1	20	0.509	0.489	0.250	0.36	0.23	0.63	0.69	0.29	0.11
MXL25A-19DP-021	2	21	0.535	0.515	0.1875	0.71	0.23	0.56	0.71	0.29	0.11
MXL25A-24DP-021	1	21	0.535	0.515	0.250	0.39	0.23	0.63	0.71	0.29	0.11
MXL25A-19DP-022	2	22	0.560	0.540	0.1875	0.74	0.23	0.56	0.74	0.29	0.16
MXL25A-24DP-022	1	22	0.560	0.540	0.250	0.39	0.30	0.63	0.74	0.29	0.16
MXL25A-24DP-024	2	24	0.611	0.591	0.250	0.44	0.30	0.69	0.79	0.29	0.16
MXL25A-24DP-025	2	25	0.637	0.617	0.250	0.47	0.30	0.69	0.82	0.29	0.16
MXL25A-24DP-028	2	28	0.713	0.693	0.250	0.49	0.30	0.69	0.90	0.29	0.16
MXL25A-24DP-030	2	30	0.764	0.744	0.250	0.55	0.30	0.69	0.95	0.29	0.16
MXL25A-24DP-032	2	32	0.815	0.795	0.250	0.60	0.30	0.69	1.00	0.29	0.16
MXL25A-24DP-036	2	36	0.917	0.897	0.250	0.68	0.30	0.69	1.11	0.29	0.16
MXL25A-24DP-040	2	40	1.019	0.999	0.250	0.75	0.56	0.72	1.21	0.29	0.16
MXL25A-24DP-042	2	42	1.070	1.050	0.250	0.81	0.56	0.72	1.26	0.29	0.16
MXL25A-24DP-044	2	44	1.120	1.100	0.250	0.86	0.56	0.72	1.32	0.29	0.16
MXL25A-24DP-048	2	48	1.222	1.202	0.250	0.94	0.56	0.72	1.42	0.29	0.16
MXL25A-24DP-060	2	60	1.528	1.508	0.250	1.22	0.56	0.72	1.73	0.29	0.16
MXL25A-24NP-060	3	60	1.528	1.508	0.250	1.15	0.38	0.75	---	0.38	0.19
MXL25A-24NP-072	3	72	1.833	1.813	0.250	1.20	0.38	0.75	---	0.38	0.19
MXL25A-27NP-080	3	80	2.037	2.017	0.3125	1.50	0.38	0.75	---	0.38	0.19
MXL25A-27NP-090	3	90	2.292	2.272	0.3125	1.50	0.38	0.75	---	0.38	0.19
MXL25A-27NP-100	3	100	2.546	2.526	0.3125	1.50	0.38	0.75	---	0.38	0.19
MXL25A-31NP-120	3	120	3.056	3.036	0.375	1.50	0.38	0.75	---	0.38	0.19

MXL

TIMING

MXL Pulleys

.080" Pitch -- For 3/8" Wide Belts

MXL



.0800 Circular Pitch

Materials

Aluminum

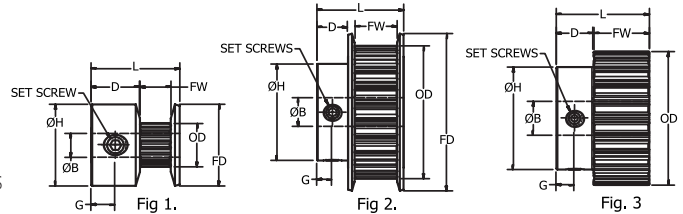
Finish: Clear Anodize

Double Flange &

No Flange

2 set screws @ 90°

(10 to 16 groove pulleys have 1 set screw)



Use MXL037 series belts

Part Number	Fig No.	No. of Grooves	Pitch Dia.	O.D.	B Bore Ø +0.001	H Hub Ø ±1/64	D Hub Lgth.	L Lgth. ±1/64	FD ±1/64	FW	G
MXL37A-16DP-010	1	10	0.255	0.235	0.125	0.43	0.23	0.69	0.43	0.41	0.11
MXL37A-16DP-011	1	11	0.280	0.260	0.125	0.45	0.23	0.69	0.45	0.41	0.11
MXL37A-16DP-012	1	12	0.306	0.286	0.125	0.48	0.23	0.69	0.48	0.41	0.11
MXL37A-16DP-014	1	14	0.357	0.337	0.125	0.53	0.23	0.69	0.53	0.41	0.11
MXL37A-19DP-015	1	15	0.382	0.362	0.1875	0.56	0.23	0.69	0.56	0.41	0.11
MXL37A-19DP-016	1	16	0.407	0.387	0.1875	0.58	0.23	0.69	0.58	0.41	0.11
MXL37A-19DP-018	1	18	0.458	0.438	0.1875	0.61	0.23	0.75	0.64	0.41	0.11
MXL37A-24DP-018	2	18	0.458	0.438	0.250	0.64	0.23	0.69	0.64	0.41	0.11
MXL37A-19DP-020	1	20	0.509	0.489	0.1875	0.66	0.23	0.75	0.69	0.41	0.11
MXL37A-24DP-020	2	20	0.509	0.489	0.250	0.69	0.23	0.69	0.69	0.41	0.11
MXL37A-19DP-021	1	21	0.535	0.515	0.1875	0.69	0.23	0.75	0.71	0.41	0.11
MXL37A-24DP-021	2	21	0.535	0.515	0.250	0.71	0.23	0.69	0.71	0.41	0.11
MXL37A-19DP-022	1	22	0.560	0.540	0.1875	0.71	0.30	0.75	0.74	0.41	0.16
MXL37A-24DP-022	2	22	0.560	0.540	0.250	0.74	0.23	0.69	0.74	0.41	0.16
MXL37A-24DP-024	2	24	0.611	0.591	0.250	0.77	0.30	0.81	0.79	0.41	0.16
MXL37A-24DP-025	2	25	0.637	0.617	0.250	0.79	0.30	0.81	0.82	0.41	0.16
MXL37A-24DP-028	2	28	0.713	0.693	0.250	0.85	0.30	0.81	0.90	0.41	0.16
MXL37A-24DP-030	2	30	0.764	0.744	0.250	0.91	0.30	0.81	0.95	0.41	0.16
MXL37A-24DP-032	2	32	0.815	0.795	0.250	0.97	0.30	0.81	1.00	0.41	0.16
MXL37A-24DP-036	2	36	0.917	0.897	0.250	1.07	0.30	0.81	1.11	0.41	0.16
MXL37A-24DP-040	2	40	1.019	0.999	0.250	1.17	0.31	0.84	1.21	0.41	0.16
MXL37A-24DP-042	2	42	1.070	1.050	0.250	1.23	0.31	0.84	1.26	0.41	0.16
MXL37A-24DP-044	2	44	1.120	1.100	0.250	1.29	0.31	0.84	1.32	0.41	0.16
MXL37A-24DP-048	2	48	1.222	1.202	0.250	1.39	0.31	0.84	1.42	0.41	0.16
MXL37A-24DP-060	2	60	1.528	1.508	0.250	1.69	0.31	0.84	1.73	0.41	0.16
MXL37A-24NP-060	3	60	1.528	1.508	0.250	1.15	0.38	0.88	---	0.50	0.19
MXL37A-24NP-072	3	72	1.833	1.813	0.250	1.35	0.38	0.88	---	0.50	0.19
MXL37A-27NP-080	3	80	2.037	2.017	0.3125	1.50	0.38	0.88	---	0.50	0.19
MXL37A-27NP-090	3	90	2.292	2.272	0.3125	1.50	0.38	0.88	---	0.50	0.19
MXL37A-27NP-100	3	100	2.546	2.526	0.3125	1.50	0.38	0.88	---	0.50	0.19
MXL37A-31NP-120	3	120	3.056	3.036	0.3750	1.50	0.38	0.88	---	0.50	0.19

XL

TIMING

XL Pulleys

.200 (1/5") Pitch -- For 1/4" Wide Belts

XL



.200 Circular Pitch

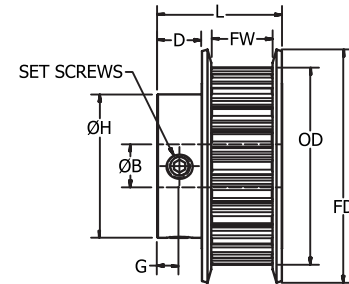
Materials

Aluminum

Finish: Clear Anodize

Double Flange

2 set screws @ 90°

(10 & 11 groove pulleys
have 1 set screw)

Use XL025 series belts

Part Number	No. of Grooves	Pitch Dia.	O.D.	B Bore Ø +0.001	H Hub Ø ±1/64	D Hub Lgth.	L Lgth. ±1/64	FD ±1/64	FW	G
XL25A-19DP-010	10	0.637	0.617	0.1875	0.375	0.25	0.69	0.88	0.31	0.13
XL25A-19DP-011	11	0.700	0.680	0.1875	0.438	0.25	0.69	0.94	0.31	0.13
XL25A-24DP-011	11	0.700	0.680	0.250	0.438	0.25	0.69	0.94	0.31	0.13
XL25A-19DP-012	12	0.764	0.744	0.1875	0.500	0.25	0.69	1.00	0.31	0.13
XL25A-24DP-012	12	0.764	0.744	0.250	0.500	0.25	0.69	1.00	0.31	0.13
XL25A-24DP-013	13	0.828	0.808	0.250	0.563	0.25	0.69	1.06	0.31	0.13
XL25A-24DP-014	14	0.891	0.871	0.250	0.563	0.25	0.69	1.09	0.31	0.13
XL25A-27DP-014	14	0.891	0.871	0.3125	0.563	0.25	0.69	1.09	0.31	0.13
XL25A-24DP-015	15	0.955	0.935	0.250	0.625	0.25	0.69	1.19	0.31	0.13
XL25A-27DP-015	15	0.955	0.935	0.3125	0.625	0.25	0.69	1.19	0.31	0.13
XL25A-24DP-016	16	1.019	0.999	0.250	0.688	0.25	0.69	1.25	0.31	0.13
XL25A-27DP-016	16	1.019	0.999	0.3125	0.688	0.25	0.69	1.25	0.31	0.13
XL25A-24DP-018	18	1.146	1.126	0.250	0.813	0.25	0.69	1.38	0.31	0.13
XL25A-27DP-018	18	1.146	1.126	0.3125	0.813	0.25	0.69	1.38	0.31	0.13
XL25A-24DP-020	20	1.273	1.253	0.250	0.938	0.31	0.75	1.50	0.31	0.16
XL25A-27DP-020	20	1.273	1.253	0.3125	0.938	0.31	0.75	1.50	0.31	0.16
XL25A-24DP-021	21	1.337	1.317	0.250	1.000	0.31	0.75	1.56	0.31	0.16
XL25A-27DP-021	21	1.337	1.317	0.3125	1.000	0.31	0.75	1.56	0.31	0.16
XL25A-24DP-022	22	1.401	1.381	0.250	1.000	0.31	0.75	1.63	0.31	0.16
XL25A-31DP-022	22	1.401	1.381	0.375	1.000	0.31	0.75	1.63	0.31	0.16
XL25A-24DP-024	24	1.528	1.508	0.250	1.063	0.34	0.78	1.75	0.31	0.17
XL25A-27DP-024	24	1.528	1.508	0.3125	1.063	0.34	0.78	1.75	0.31	0.17
XL25A-31DP-024	24	1.528	1.508	0.375	1.063	0.34	0.78	1.75	0.31	0.17
XL25A-24DP-026	26	1.655	1.635	0.250	1.188	0.34	0.78	1.88	0.31	0.17
XL25A-31DP-026	26	1.655	1.635	0.375	1.188	0.34	0.78	1.88	0.31	0.17
XL25A-24DP-028	28	1.783	1.763	0.250	1.188	0.34	0.78	2.00	0.31	0.17
XL25A-31DP-028	28	1.783	1.763	0.375	1.188	0.34	0.78	2.00	0.31	0.17
XL25A-24DP-030	30	1.910	1.890	0.250	1.312	0.34	0.78	2.13	0.31	0.17
XL25A-31DP-030	30	1.910	1.890	0.375	1.312	0.34	0.78	2.13	0.31	0.17

XL

TIMING

XL Pulleys

.200 (1/5") Pitch -- For 3/8" Wide Belts

XL



.200 Circular Pitch

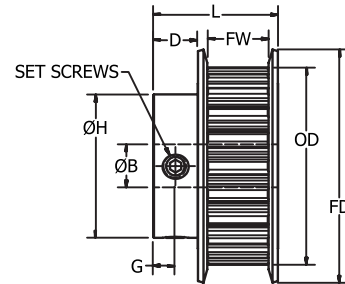
Materials

Aluminum

Finish: Clear Anodize

Double Flange

2 set screws @ 90°

(10 & 11 groove pulleys
have 1 set screw)

Use XL037 series belts

Part Number	No. of Grooves	Pitch Dia.	O.D.	B Bore Ø +0.001	H Hub Ø ±1/64	D Hub Lgth.	L Lgth. ±1/64	FD ±1/64	FW	G
XL37A-19DP-010	10	0.637	0.617	0.1875	0.44	0.25	0.81	0.88	0.43	0.13
XL37A-24DP-010	10	0.637	0.617	0.250	0.44	0.25	0.81	0.88	0.43	0.13
XL37A-19DP-011	11	0.700	0.680	0.1875	0.50	0.25	0.81	0.94	0.43	0.13
XL37A-24DP-011	11	0.700	0.680	0.250	0.50	0.25	0.81	0.94	0.43	0.13
XL37A-19DP-012	12	0.764	0.744	0.1875	0.50	0.25	0.81	1.00	0.43	0.13
XL37A-24DP-012	12	0.764	0.744	0.250	0.50	0.25	0.81	1.00	0.43	0.13
XL37A-27DP-012	12	0.764	0.744	0.3125	0.50	0.25	0.81	1.00	0.43	0.13
XL37A-24DP-013	13	0.828	0.808	0.250	0.56	0.25	0.81	1.06	0.43	0.13
XL37A-24DP-014	14	0.891	0.871	0.250	0.56	0.25	0.81	1.09	0.43	0.13
XL37A-27DP-014	14	0.891	0.871	0.3125	0.56	0.25	0.81	1.09	0.43	0.13
XL37A-24DP-015	15	0.955	0.935	0.250	0.63	0.25	0.81	1.18	0.43	0.13
XL37A-27DP-015	15	0.955	0.935	0.3125	0.63	0.25	0.81	1.18	0.43	0.13
XL37A-31DP-015	15	0.955	0.935	0.375	0.75	0.25	0.81	1.18	0.43	0.13
XL37A-36DP-015	15	0.955	0.935	0.500	0.75	0.25	0.81	1.18	0.43	0.13
XL37A-24DP-016	16	1.019	0.999	0.250	0.69	0.25	0.81	1.25	0.43	0.13
XL37A-27DP-016	16	1.019	0.999	0.3125	0.69	0.25	0.81	1.25	0.43	0.13
XL37A-31DP-016	16	1.019	0.999	0.375	0.69	0.25	0.81	1.25	0.43	0.13
XL37A-24DP-017	17	1.082	1.062	0.250	0.75	0.25	0.81	1.31	0.43	0.13
XL37A-24DP-018	18	1.146	1.126	0.250	0.81	0.25	0.81	1.37	0.43	0.13
XL37A-27DP-018	18	1.146	1.126	0.3125	0.81	0.25	0.81	1.37	0.43	0.13
XL37A-31DP-018	18	1.146	1.126	0.375	0.81	0.25	0.81	1.37	0.43	0.13
XL37A-24DP-019	19	1.210	1.190	0.250	0.88	0.25	0.81	1.43	0.43	0.13
XL37A-24DP-020	20	1.273	1.253	0.250	0.94	0.31	0.88	1.50	0.43	0.16
XL37A-27DP-020	20	1.273	1.253	0.3125	0.94	0.31	0.88	1.50	0.43	0.16
XL37A-31DP-020	20	1.273	1.253	0.375	0.94	0.31	0.88	1.50	0.43	0.16
XL37A-36DP-020	20	1.273	1.253	0.500	0.94	0.31	0.88	1.50	0.43	0.16

Continued on next page

XL

TIMING

XL Pulleys

.200 (1/5") Pitch -- For 3/8" Wide Belts

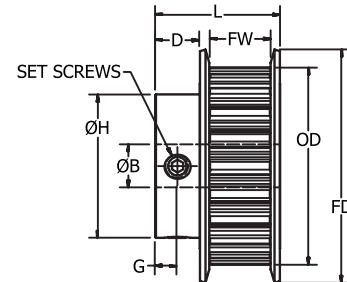
XL



.200 Circular Pitch

Materials

Aluminum
Finish: Clear Anodize
 Double Flange
 2 set screws @ 90°



Use XL037 series belts

Continued from previous page

Part Number	No. of Grooves	Pitch Dia.	O.D.	B Bore Ø +0.001	H Hub Ø ±1/64	D Hub Lgth.	L Lgth. ±1/64	FD ±1/64	FW	G
XL37A-24DP-021	21	1.337	1.317	0.250	1.00	0.31	0.88	1.56	0.43	0.16
XL37A-27DP-021	21	1.337	1.317	0.3125	1.00	0.31	0.88	1.56	0.43	0.16
XL37A-31DP-021	21	1.337	1.317	0.375	1.00	0.31	0.88	1.56	0.43	0.16
XL37A-24DP-022	22	1.401	1.381	0.250	1.00	0.31	0.88	1.63	0.43	0.16
XL37A-27DP-022	22	1.401	1.381	0.3125	1.00	0.31	0.88	1.63	0.43	0.16
XL37A-31DP-022	22	1.401	1.381	0.375	1.00	0.31	0.88	1.63	0.43	0.16
XL37A-24DP-023	23	1.464	1.444	0.250	1.06	0.31	0.88	1.69	0.43	0.16
XL37A-24DP-024	24	1.528	1.508	0.250	1.06	0.34	0.91	1.75	0.43	0.17
XL37A-27DP-024	24	1.528	1.508	0.3125	1.06	0.34	0.91	1.75	0.43	0.17
XL37A-31DP-024	24	1.528	1.508	0.375	1.06	0.34	0.91	1.75	0.43	0.17
XL37A-36DP-024	24	1.528	1.508	0.500	1.06	0.34	0.91	1.75	0.43	0.17
XL37A-24DP-025	25	1.592	1.572	0.250	1.09	0.34	0.91	1.81	0.43	0.17
XL37A-31DP-025	25	1.592	1.572	0.375	1.09	0.34	0.91	1.81	0.43	0.17
XL37A-24DP-026	26	1.655	1.635	0.250	1.09	0.34	0.91	1.88	0.43	0.17
XL37A-31DP-026	26	1.655	1.635	0.375	1.09	0.34	0.91	1.88	0.43	0.17
XL37A-24DP-028	28	1.783	1.763	0.250	1.09	0.34	0.91	2.00	0.43	0.17
XL37A-27DP-028	28	1.783	1.763	0.3125	1.09	0.34	0.91	2.00	0.43	0.17
XL37A-31DP-028	28	1.783	1.763	0.375	1.09	0.34	0.91	2.00	0.43	0.17
XL37A-24DP-030	30	1.910	1.890	0.250	1.31	0.34	0.91	2.13	0.43	0.17
XL37A-27DP-030	30	1.910	1.890	0.3125	1.31	0.34	0.91	2.13	0.43	0.17
XL37A-31DP-030	30	1.910	1.890	0.375	1.31	0.34	0.91	2.13	0.43	0.17
XL37A-36DP-030	30	1.910	1.890	0.500	1.31	0.34	0.91	2.13	0.43	0.17
XL37A-31DP-032	32	2.037	2.017	0.375	1.43	0.34	0.91	2.25	0.43	0.17

XL

TIMING

XL Pulleys

.200 (1/5") Pitch -- For 3/8" Wide Belts

XL



.200 Circular Pitch

Materials

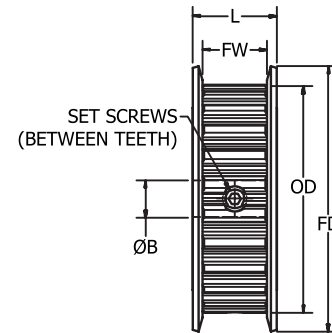
Aluminum

Finish: Clear Anodize

Double Flange

No Hub

2 set screws @ approximately 90°

(10 & 12 groove pulleys
have 1 set screw)

Use XL037 series belts

Part Number	No. of Grooves	Pitch Dia.	O.D.	B Bore Ø +0.001	L Lgth. ±1/64	FD ±1/64	FW	G
XL37A-19DH-010	10	0.637	0.617	0.1875	0.56	0.88	0.43	0.28
XL37A-24DH-010	10	0.637	0.617	0.250	0.56	0.88	0.43	0.28
XL37A-19DH-011	11	0.700	0.680	0.1875	0.56	0.94	0.43	0.28
XL37A-24DH-011	11	0.700	0.680	0.250	0.56	0.94	0.43	0.28
XL37A-19DH-012	12	0.764	0.744	0.1875	0.56	1.00	0.43	0.28
XL37A-24DH-012	12	0.764	0.744	0.250	0.56	1.00	0.43	0.28
XL37A-24DH-014	14	0.891	0.871	0.250	0.56	1.09	0.43	0.28
XL37A-27DH-014	14	0.891	0.871	0.3125	0.56	1.09	0.43	0.28
XL37A-31DH-014	14	0.891	0.871	0.375	0.56	1.09	0.43	0.28
XL37A-24DH-015	15	0.955	0.935	0.250	0.56	1.19	0.43	0.28
XL37A-27DH-015	15	0.955	0.935	0.3125	0.56	1.19	0.43	0.28
XL37A-24DH-016	16	1.019	0.999	0.250	0.56	1.25	0.43	0.28
XL37A-27DH-016	16	1.019	0.999	0.3125	0.56	1.25	0.43	0.28
XL37A-24DH-018	18	1.146	1.126	0.250	0.56	1.38	0.43	0.28
XL37A-27DH-018	18	1.146	1.126	0.3125	0.56	1.38	0.43	0.28
XL37A-36DH-018	18	1.146	1.126	0.500	0.56	1.38	0.43	0.28
XL37A-24DH-020	20	1.273	1.253	0.250	0.56	1.50	0.43	0.28
XL37A-27DH-020	20	1.273	1.253	0.3125	0.56	1.50	0.43	0.28
XL37A-31DH-020	20	1.273	1.253	0.375	0.56	1.50	0.43	0.28
XL37A-24DH-021	21	1.337	1.317	0.250	0.56	1.56	0.43	0.28
XL37A-27DH-021	21	1.337	1.317	0.3125	0.56	1.56	0.43	0.28
XL37A-24DH-022	22	1.401	1.381	0.250	0.56	1.63	0.43	0.28
XL37A-27DH-022	22	1.401	1.381	0.3125	0.56	1.63	0.43	0.28
XL37A-24DH-024	24	1.528	1.508	0.250	0.56	1.75	0.43	0.28
XL37A-27DH-024	24	1.528	1.508	0.3125	0.56	1.75	0.43	0.28
XL37A-31DH-024	24	1.528	1.508	0.375	0.56	1.75	0.43	0.28
XL37A-24DH-028	28	1.783	1.763	0.250	0.56	2.00	0.43	0.28
XL37A-31DH-028	28	1.783	1.763	0.375	0.56	2.00	0.43	0.28
XL37A-24DH-030	30	1.910	1.890	0.250	0.56	2.13	0.43	0.28
XL37A-31DH-030	30	1.910	1.890	0.375	0.56	2.13	0.43	0.28
XL37A-27DH-032	32	2.037	2.017	0.3125	0.56	2.25	0.43	0.28
XL37A-31DH-032	32	2.037	2.017	0.375	0.56	2.25	0.43	0.28

XL

TIMING

XL Pulleys

.200 (1/5") Pitch -- For 3/8" Wide Belts

XL



.200 Circular Pitch

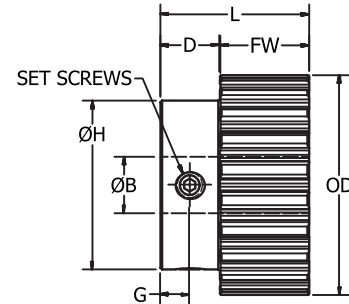
Materials

Aluminum

Finish: Clear Anodize

No Flange

2 set screws @ 90°

(10 & 11 groove pulleys
have 1 set screw)

Use XL037 series belts

Part Number	No. of Grooves	Pitch Dia.	O.D.	B Bore Ø +0.001	H Hub Ø ±1/64	D Hub Lgth.	L Lgth. ±1/64	FW	G
XL37A-19NP-010	10	0.637	0.617	0.1875	0.44	0.25	0.81	0.56	0.13
XL37A-24NP-010	10	0.637	0.617	0.250	0.44	0.25	0.81	0.56	0.13
XL37A-19NP-011	11	0.700	0.680	0.1875	0.50	0.25	0.81	0.56	0.13
XL37A-24NP-011	11	0.700	0.680	0.250	0.50	0.25	0.81	0.56	0.13
XL37A-19NP-012	12	0.764	0.744	0.1875	0.56	0.25	0.81	0.56	0.13
XL37A-24NP-012	12	0.764	0.744	0.250	0.56	0.25	0.81	0.56	0.13
XL37A-24NP-014	14	0.891	0.871	0.250	0.63	0.25	0.81	0.56	0.13
XL37A-27NP-014	14	0.891	0.871	0.3125	0.63	0.25	0.81	0.56	0.13
XL37A-24NP-015	15	0.955	0.935	0.250	0.69	0.25	0.88	0.56	0.16
XL37A-27NP-015	15	0.955	0.935	0.3125	0.69	0.31	0.88	0.56	0.16
XL37A-31NP-015	15	0.955	0.935	0.375	0.69	0.31	0.88	0.56	0.16
XL37A-24NP-016	16	1.019	0.999	0.250	0.75	0.31	0.88	0.56	0.16
XL37A-27NP-016	16	1.019	0.999	0.3125	0.75	0.31	0.88	0.56	0.16
XL37A-24NP-017	17	1.082	1.062	0.250	0.81	0.31	0.88	0.56	0.16
XL37A-24NP-018	18	1.146	1.126	0.250	0.88	0.31	0.88	0.56	0.16
XL37A-27NP-018	18	1.146	1.126	0.3125	0.88	0.31	0.88	0.56	0.16
XL37A-31NP-018	18	1.146	1.126	0.375	0.88	0.31	0.88	0.56	0.16
XL37A-24NP-019	19	1.210	1.190	0.250	0.88	0.31	0.88	0.56	0.16
XL37A-24NP-020	20	1.273	1.253	0.250	0.94	0.31	0.94	0.56	0.19
XL37A-27NP-020	20	1.273	1.253	0.3125	0.94	0.38	0.94	0.56	0.19
XL37A-31NP-020	20	1.273	1.253	0.375	0.94	0.38	0.94	0.56	0.19
XL37A-24NP-021	21	1.337	1.317	0.250	1.00	0.38	0.94	0.56	0.19
XL37A-27NP-021	21	1.337	1.317	0.3125	1.00	0.38	0.94	0.56	0.19
XL37A-24NP-022	22	1.401	1.381	0.250	1.06	0.38	0.94	0.56	0.19
XL37A-27NP-022	22	1.401	1.381	0.3125	1.06	0.38	0.94	0.56	0.19
XL37A-31NP-022	22	1.401	1.381	0.375	1.06	0.38	0.94	0.56	0.19
XL37A-24NP-023	23	1.464	1.444	0.250	1.13	0.38	0.94	0.56	0.19
XL37A-24NP-024	24	1.528	1.508	0.250	1.19	0.38	0.94	0.56	0.19
XL37A-27NP-024	24	1.528	1.508	0.3125	1.19	0.38	0.94	0.56	0.19
XL37A-31NP-024	24	1.528	1.508	0.375	1.19	0.38	0.94	0.56	0.19
XL37A-24NP-025	25	1.592	1.572	0.250	1.25	0.38	0.94	0.56	0.19
XL37A-31NP-025	25	1.592	1.572	0.375	1.25	0.38	0.94	0.56	0.19

Continued on next page

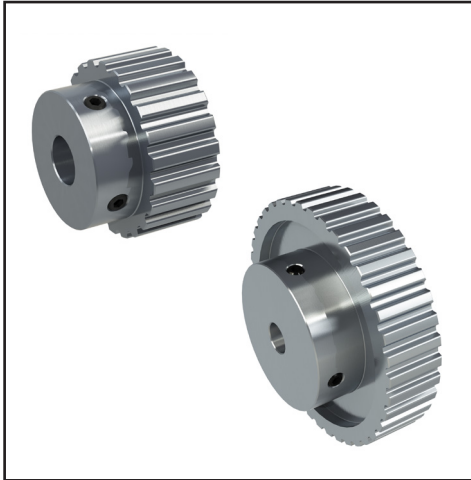
XL

TIMING

XL Pulleys

.200 (1/5") Pitch -- For 3/8" Wide Belts

XL



.200 Circular Pitch

Materials

Aluminum
 Finish: Clear Anodize
 No Flange
 2 set screws @ 90°

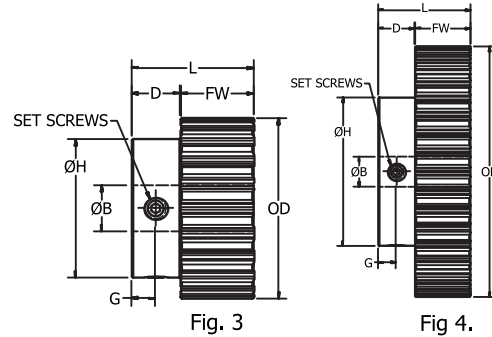


Fig. 3

Fig. 4.

Use XL037 series belts

Continued from previous page

Part Number	Fig. No.	No. of Grooves	Pitch Dia.	O.D.	B Bore Ø +0.001	H Hub Ø ±1/64	D Hub Lgth.	L Lgth. ±1/64	FW	G
XL37A-27NP-027	3	27	1.719	1.699	0.3125	1.25	0.38	0.94	0.56	0.19
XL37A-24NP-028	3	28	1.783	1.763	0.250	1.25	0.38	0.94	0.56	0.19
XL37A-27NP-028	3	28	1.783	1.763	0.3125	1.25	0.38	0.94	0.56	0.19
XL37A-31NP-028	3	28	1.783	1.763	0.375	1.25	0.38	0.94	0.56	0.19
XL37A-27NP-029	3	29	1.846	1.826	0.3125	1.31	0.38	0.94	0.56	0.19
XL37A-24NP-030	3	30	1.910	1.890	0.250	1.38	0.38	0.94	0.56	0.19
XL37A-27NP-030	3	30	1.910	1.890	0.3125	1.38	0.38	0.94	0.56	0.19
XL37A-31NP-030	3	30	1.910	1.890	0.375	1.38	0.38	0.94	0.56	0.19
XL37A-27NP-032	3	32	2.037	2.017	0.3125	1.50	0.38	1.00	0.56	0.22
XL37A-31NP-032	3	32	2.037	2.017	0.375	1.50	0.44	1.00	0.56	0.22
XL37A-36NP-032	3	32	2.037	2.017	0.500	1.50	0.44	1.00	0.56	0.22
XL37A-27NP-036	3	36	2.292	2.272	0.3125	1.50	0.44	1.00	0.56	0.22
XL37A-31NP-036	3	36	2.292	2.272	0.375	1.50	0.44	1.00	0.56	0.22
XL37A-36NP-036	3	36	2.292	2.272	0.500	1.50	0.44	1.00	0.56	0.22
XL37A-27NP-040	4	40	2.546	2.526	0.3125	1.50	0.44	1.00	0.56	0.22
XL37A-31NP-040	4	40	2.546	2.526	0.375	1.50	0.44	1.00	0.56	0.22
XL37A-36NP-040	4	40	2.546	2.526	0.500	1.50	0.44	1.00	0.56	0.22
XL37A-27NP-042	4	42	2.674	2.654	0.3125	1.50	0.44	1.00	0.56	0.22
XL37A-31NP-042	4	42	2.674	2.654	0.375	1.50	0.44	1.00	0.56	0.22
XL37A-36NP-042	4	42	2.674	2.654	0.500	1.50	0.44	1.00	0.56	0.22
XL37A-27NP-044	4	44	2.801	2.781	0.3125	1.50	0.44	1.00	0.56	0.22
XL37A-31NP-044	4	44	2.801	2.781	0.375	1.50	0.44	1.00	0.56	0.22
XL37A-36NP-044	4	44	2.801	2.781	0.500	1.50	0.44	1.00	0.56	0.22
XL37A-27NP-045	4	45	2.865	2.845	0.3125	1.50	0.44	1.00	0.56	0.22
XL37A-31NP-045	4	45	2.865	2.845	0.375	1.50	0.44	1.00	0.56	0.22
XL37A-36NP-045	4	45	2.865	2.845	0.500	1.50	0.44	1.00	0.56	0.22
XL37A-27NP-048	4	48	3.056	3.036	0.3125	1.50	0.44	1.00	0.56	0.22
XL37A-31NP-048	4	48	3.056	3.036	0.375	1.50	0.44	1.00	0.56	0.22
XL37A-36NP-048	4	48	3.056	3.036	0.500	1.50	0.44	1.00	0.56	0.22
XL37A-27NP-050	4	50	3.183	3.163	0.3125	1.50	0.44	1.00	0.56	0.22
XL37A-31NP-050	4	50	3.183	3.163	0.375	1.50	0.44	1.00	0.56	0.22
XL37A-36NP-050	4	50	3.183	3.163	0.500	1.50	0.44	1.00	0.56	0.22
XL37A-31NP-060	4	60	3.820	3.800	0.375	1.50	0.44	1.00	0.56	0.22
XL37A-36NP-060	4	60	3.820	3.800	0.500	1.50	0.44	1.00	0.56	0.22
XL37A-31NP-072	4	72	4.584	4.564	0.375	1.50	0.44	1.00	0.56	0.22
XL37A-36NP-072	4	72	4.584	4.564	0.500	1.50	0.44	1.00	0.56	0.22

XL

TIMING

XL Pulleys

.200 (1/5") Pitch -- For 3/8" Wide Belts

XL



.200 Circular Pitch

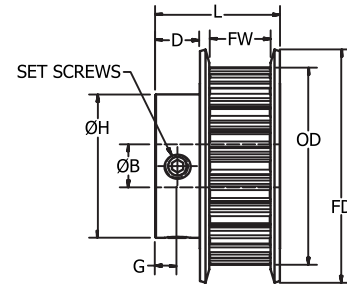
Materials

Steel

Finish: Black Oxide

Double Flange

2 set screws @ 90°

(10 & 11 groove pulleys
have 1 set screw)

Use XL037 series belts

Continued from previous page

Part Number	No. of Grooves	Pitch Dia.	O.D.	B Bore Ø +0.001	H Hub Ø ±1/64	D Hub Lgth.	L Lgth. ±1/64	FD ±1/64	FW	G
XL37S-19DP-010	10	0.637	0.617	0.1875	0.44	0.27	0.81	0.88	0.43	0.13
XL37S-24DP-010	10	0.637	0.617	0.250	0.44	0.27	0.81	0.88	0.43	0.13
XL37S-19DP-011	11	0.700	0.680	0.1875	0.50	0.27	0.81	0.94	0.43	0.13
XL37S-24DP-011	11	0.700	0.680	0.250	0.50	0.27	0.81	0.94	0.43	0.13
XL37S-19DP-012	12	0.764	0.744	0.1875	0.50	0.27	0.81	1.00	0.43	0.13
XL37S-24DP-012	12	0.764	0.744	0.250	0.50	0.27	0.81	1.00	0.43	0.13
XL37S-27DP-012	12	0.764	0.744	0.3125	0.50	0.27	0.81	1.00	0.43	0.13
XL37S-24DP-014	14	0.891	0.871	0.250	0.56	0.27	0.81	1.09	0.43	0.13
XL37S-27DP-014	14	0.891	0.871	0.3125	0.56	0.27	0.81	1.09	0.43	0.13
XL37S-24DP-015	15	0.955	0.935	0.250	0.63	0.27	0.81	1.19	0.43	0.13
XL37S-27DP-015	15	0.955	0.935	0.3125	0.63	0.27	0.81	1.19	0.43	0.13
XL37S-31DP-015	15	0.955	0.935	0.375	0.75	0.27	0.81	1.19	0.43	0.13
XL37S-36DP-015	15	0.955	0.935	0.500	0.75	0.27	0.81	1.19	0.43	0.13
XL37S-24DP-016	16	1.019	0.999	0.250	0.69	0.27	0.81	1.25	0.43	0.13
XL37S-27DP-016	16	1.019	0.999	0.3125	0.69	0.27	0.81	1.25	0.43	0.13
XL37S-24DP-018	18	1.146	1.126	0.250	0.81	0.27	0.81	1.38	0.43	0.13
XL37S-27DP-018	18	1.146	1.126	0.3125	0.81	0.27	0.81	1.38	0.43	0.13
XL37S-31DP-018	18	1.146	1.126	0.375	0.81	0.27	0.81	1.38	0.43	0.13
XL37S-24DP-020	20	1.273	1.253	0.250	0.94	0.33	0.88	1.50	0.43	0.16
XL37S-27DP-020	20	1.273	1.253	0.3125	0.94	0.33	0.88	1.50	0.43	0.16
XL37S-31DP-020	20	1.273	1.253	0.375	0.94	0.33	0.88	1.50	0.43	0.16
XL37S-36DP-020	20	1.273	1.253	0.500	0.94	0.33	0.88	1.50	0.43	0.16

Continued on next page

XL

TIMING

XL Pulleys

.200 (1/5") Pitch -- For 3/8" Wide Belts

XL



.200 Circular Pitch

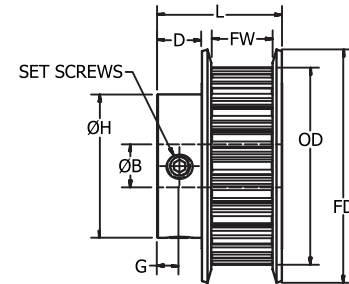
Materials

Steel

Finish: Black Oxide

Double Flange

2 set screws @ 90°



Use XL037 series belts

Continued from previous page

Part Number	No. of Grooves	Pitch Dia.	O.D.	B Bore Ø +0.001	H Hub Ø ±1/64	D Hub Lgth.	L Lgth. ±1/64	FD ±1/64	FW	G
XL37S-24DP-021	21	1.337	1.317	0.250	1.00	0.33	0.88	1.56	0.43	0.16
XL37S-27DP-021	21	1.337	1.317	0.3125	1.00	0.33	0.88	1.56	0.43	0.16
XL37S-24DP-022	22	1.401	1.381	0.250	1.00	0.33	0.88	1.63	0.43	0.16
XL37S-27DP-022	22	1.401	1.381	0.3125	1.00	0.33	0.88	1.63	0.43	0.16
XL37S-31DP-022	22	1.401	1.381	0.375	1.00	0.33	0.88	1.63	0.43	0.16
XL37S-24DP-024	24	1.528	1.508	0.250	1.06	0.36	0.91	1.75	0.43	0.17
XL37S-27DP-024	24	1.528	1.508	0.3125	1.06	0.36	0.91	1.75	0.43	0.17
XL37S-31DP-024	24	1.528	1.508	0.375	1.06	0.36	0.91	1.75	0.43	0.17
XL37S-36DP-024	24	1.528	1.508	0.500	1.06	0.36	0.91	1.75	0.43	0.17
XL37S-24DP-025	25	1.592	1.572	0.250	1.09	0.36	0.91	1.81	0.43	0.17
XL37S-31DP-025	25	1.592	1.572	0.375	1.09	0.36	0.91	1.81	0.43	0.17
XL37S-24DP-028	28	1.783	1.763	0.250	1.19	0.36	0.91	2.00	0.43	0.17
XL37S-27DP-028	28	1.783	1.763	0.3125	1.19	0.36	0.91	2.00	0.43	0.17
XL37S-31DP-028	28	1.783	1.763	0.375	1.19	0.36	0.91	2.00	0.43	0.17
XL37S-24DP-030	30	1.910	1.890	0.250	1.31	0.36	0.91	2.13	0.43	0.17
XL37S-27DP-030	30	1.910	1.890	0.3125	1.31	0.36	0.91	2.13	0.43	0.17
XL37S-31DP-030	30	1.910	1.890	0.375	1.31	0.36	0.91	2.13	0.43	0.17
XL37S-36DP-030	30	1.910	1.890	0.500	1.31	0.36	0.91	2.13	0.43	0.17
XL37S-31DP-032	32	2.037	2.017	0.375	1.44	0.36	0.91	2.25	0.43	0.17

XL

TIMING

XL Pulleys

.200 (1/5") Pitch -- For 3/8" Wide Belts

XL



.200 Circular Pitch

Materials

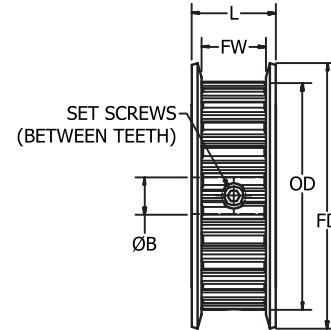
Steel

Finish: Clear Anodize

Double Flange

No Hub

2 set screws @ approximately 90°

(10 & 12 groove pulleys
have 1 set screw)

Use XL037 series belts

Part Number	No. of Grooves	Pitch Dia.	O.D.	B Bore Ø +0.001	L Lgth. ±1/64	FD ±1/64	FW	G
XL37S-19DH-010	10	0.637	0.617	0.1875	0.55	0.88	0.43	0.27
XL37S-24DH-010	10	0.637	0.617	0.250	0.55	0.88	0.43	0.27
XL37S-19DH-011	11	0.700	0.680	0.1875	0.55	0.94	0.43	0.27
XL37S-24DH-011	11	0.700	0.680	0.250	0.55	0.94	0.43	0.27
XL37S-19DH-012	12	0.764	0.744	0.1875	0.55	1.00	0.43	0.27
XL37S-24DH-012	12	0.764	0.744	0.250	0.55	1.00	0.43	0.27
XL37S-24DH-014	14	0.891	0.871	0.250	0.55	1.09	0.43	0.27
XL37S-24DH-015	15	0.955	0.935	0.250	0.55	1.19	0.43	0.27
XL37S-27DH-015	15	0.955	0.935	0.3125	0.55	1.19	0.43	0.27
XL37S-24DH-016	16	1.019	0.999	0.250	0.55	1.25	0.43	0.27
XL37S-27DH-016	16	1.019	0.999	0.3125	0.55	1.25	0.43	0.27
XL37S-24DH-018	18	1.146	1.126	0.250	0.55	1.38	0.43	0.27
XL37S-27DH-018	18	1.146	1.126	0.3125	0.55	1.38	0.43	0.27
XL37S-24DH-020	20	1.273	1.253	0.250	0.55	1.50	0.43	0.27
XL37S-27DH-020	20	1.273	1.253	0.3125	0.55	1.50	0.43	0.27
XL37S-31DH-020	20	1.273	1.253	0.375	0.55	1.50	0.43	0.27
XL37S-24DH-021	21	1.337	1.317	0.250	0.55	1.56	0.43	0.27
XL37S-27DH-021	21	1.337	1.317	0.3125	0.55	1.56	0.43	0.27
XL37S-24DH-022	22	1.401	1.381	0.250	0.55	1.63	0.43	0.27
XL37S-27DH-022	22	1.401	1.381	0.3125	0.55	1.63	0.43	0.27
XL37S-24DH-024	24	1.528	1.508	0.250	0.55	1.75	0.43	0.27
XL37S-27DH-024	24	1.528	1.508	0.3125	0.55	1.75	0.43	0.27
XL37S-31DH-024	24	1.528	1.508	0.375	0.55	1.75	0.43	0.27
XL37S-24DH-028	28	1.783	1.763	0.250	0.55	2.00	0.43	0.27
XL37S-31DH-028	28	1.783	1.763	0.375	0.55	2.00	0.43	0.27
XL37S-24DH-030	30	1.910	1.890	0.250	0.55	2.13	0.43	0.27
XL37S-31DH-030	30	1.910	1.890	0.375	0.55	2.13	0.43	0.27
XL37S-27DH-032	32	2.037	2.017	0.3125	0.55	2.25	0.43	0.27
XL37S-31DH-032	32	2.037	2.017	0.375	0.55	2.25	0.43	0.27

L

TIMING

L Pulleys

.375 Pitch -- For 1/2" Wide Belts

L



.375 Circular Pitch

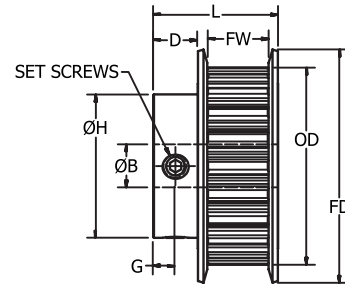
Materials

Steel

Finish: Black Oxide

Double Flange

2 set screws @ 90°



Use L050 series belts

Part Number	No. of Grooves	Pitch Dia.	O.D.	B Bore Ø +0.001	H Hub Ø ±1/64	D Hub Lgth.	L Lgth. ±1/64	FD ±1/64	FW	G
L50A-31DP-010	10	1.194	1.164	0.375	0.88	0.41	1.13	1.44	0.56	0.20
L50A-36DP-010	10	1.194	1.164	0.500	0.88	0.41	1.13	1.44	0.56	0.20
L50A-31DP-011	11	1.313	1.283	0.375	1.00	0.41	1.13	1.53	0.56	0.20
L50A-36DP-011	11	1.313	1.283	0.500	1.00	0.41	1.13	1.53	0.56	0.20
L50A-31DP-012	12	1.432	1.402	0.375	1.13	0.47	1.19	1.66	0.56	0.23
L50A-36DP-012	12	1.432	1.402	0.500	1.13	0.47	1.19	1.66	0.56	0.23
L50A-31DP-013	13	1.552	1.522	0.375	1.13	0.47	1.19	1.78	0.56	0.23
L50A-36DP-013	13	1.552	1.522	0.500	1.13	0.47	1.19	1.78	0.56	0.23
L50A-31DP-014	14	1.671	1.641	0.375	1.25	0.47	1.19	1.91	0.56	0.23
L50A-36DP-014	14	1.671	1.641	0.500	1.25	0.47	1.19	1.91	0.56	0.23
L50A-31DP-015	15	1.790	1.760	0.375	1.38	0.53	1.25	2.03	0.56	0.27
L50A-36DP-015	15	1.790	1.760	0.500	1.38	0.53	1.25	2.03	0.56	0.27
L50A-36DP-016	16	1.910	1.880	0.500	1.38	0.53	1.25	2.13	0.56	0.27
L50A-41DP-016	16	1.910	1.880	0.625	1.38	0.53	1.25	2.13	0.56	0.27
L50A-31DP-017	17	2.029	1.999	0.500	1.50	0.53	1.25	2.25	0.56	0.27
L50A-41DP-017	17	2.029	1.999	0.625	1.50	0.53	1.25	2.25	0.56	0.27
L50A-31DP-018	18	2.149	2.119	0.500	1.63	0.53	1.25	2.38	0.56	0.27
L50A-41DP-018	18	2.149	2.119	0.625	1.63	0.53	1.25	2.38	0.56	0.27
L50A-31DP-019	19	2.268	2.238	0.500	1.69	0.59	1.31	2.50	0.56	0.30
L50A-41DP-019	19	2.268	2.238	0.625	1.69	0.59	1.31	2.50	0.56	0.30
L50A-31DP-020	20	2.387	2.357	0.500	1.81	0.59	1.31	2.63	0.56	0.30
L50A-41DP-020	20	2.387	2.357	0.625	1.81	0.59	1.31	2.63	0.56	0.30
L50A-31DP-021	21	2.507	2.477	0.500	2.00	0.63	1.38	2.75	0.59	0.31
L50A-41DP-021	21	2.507	2.477	0.625	2.00	0.63	1.38	2.75	0.59	0.31
L50A-31DP-022	22	2.626	2.596	0.500	2.13	0.63	1.38	2.88	0.59	0.31
L50A-41DP-022	22	2.626	2.596	0.625	2.13	0.63	1.38	2.88	0.59	0.31
L50A-31DP-024	24	2.865	2.835	0.500	2.25	0.63	1.38	3.09	0.59	0.31
L50A-41DF-024	24	2.865	2.835	0.625	2.25	0.63	1.38	3.09	0.59	0.31

Continued on next page

L

TIMING

L Pulleys

.375 Pitch -- For 1/2" Wide Belts

L



.375 Circular Pitch

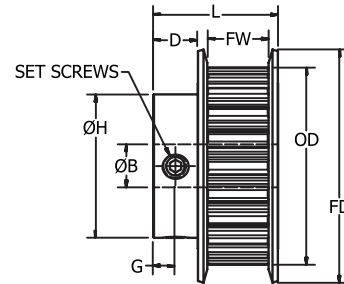
Materials

Steel

Finish: Black Oxide

Double Flange

2 set screws @ 90°



Use L50S series belts

Continued from previous page

Part Number	No. of Grooves	Pitch Dia.	O.D.	B Bore Ø +0.001	H Hub Ø ±1/64	D Hub Lgth.	L Lgth. ±1/64	FD ±1/64	FW	G
L50S-31DP-010	10	1.194	1.164	0.375	0.81	0.36	1.14	1.42	0.59	0.18
L50S-36DP-010	10	1.194	1.164	0.500	0.81	0.36	1.14	1.42	0.59	0.18
L50S-31DP-012	12	1.432	1.402	0.375	1.06	0.48	1.25	1.65	0.59	0.24
L50S-36DP-012	12	1.432	1.402	0.500	1.06	0.48	1.25	1.65	0.59	0.24
L50S-31DP-014	14	1.671	1.641	0.375	1.13	0.48	1.25	1.89	0.59	0.24
L50S-36DP-014	14	1.671	1.641	0.500	1.13	0.48	1.25	1.89	0.59	0.24
L50S-31DP-016	16	1.910	1.880	0.375	1.44	0.61	1.39	2.13	0.59	0.30
L50S-36DP-016	16	1.910	1.880	0.500	1.44	0.61	1.39	2.13	0.59	0.30
L50S-31DP-017	17	2.029	1.999	0.375	1.50	0.61	1.39	2.24	0.59	0.30
L50S-36DP-017	17	2.029	1.999	0.500	1.50	0.61	1.39	2.24	0.59	0.30
L50S-31DP-018	18	2.149	2.119	0.375	1.56	0.61	1.39	2.36	0.59	0.30
L50S-36DP-018	18	2.149	2.119	0.500	1.56	0.61	1.39	2.36	0.59	0.30
L50S-31DP-019	19	2.268	2.238	0.375	1.63	0.61	1.39	2.52	0.59	0.30
L50S-36DP-019	19	2.268	2.238	0.500	1.63	0.61	1.39	2.52	0.59	0.30
L50S-31DP-020	20	2.387	2.357	0.375	1.69	0.61	1.39	2.62	0.59	0.30
L50S-36DP-020	20	2.387	2.357	0.500	1.69	0.61	1.39	2.62	0.59	0.30
L50S-31DP-021	21	2.507	2.477	0.375	1.88	0.67	1.44	2.76	0.59	0.34
L50S-36DP-021	21	2.507	2.477	0.500	1.88	0.67	1.44	2.76	0.59	0.34
L50S-31DP-022	22	2.626	2.596	0.375	2.00	0.73	1.50	2.95	0.59	0.37
L50S-36DP-022	22	2.626	2.596	0.500	2.00	0.73	1.50	2.95	0.59	0.37
L50S-31DP-024	24	2.865	2.835	0.375	2.25	0.73	1.50	3.11	0.59	0.37
L50S-36DP-024	24	2.865	2.835	0.500	2.25	0.73	1.50	3.11	0.59	0.37
L50S-31DP-025	26	3.104	3.074	0.375	2.25	0.73	1.50	3.39	0.59	0.37
L50S-36DP-026	26	3.104	3.074	0.500	2.25	0.73	1.50	3.39	0.59	0.37
L50S-31DP-027	28	3.342	3.312	0.375	2.25	0.73	1.50	3.58	0.59	0.37
L50S-36DP-028	28	3.342	3.312	0.500	2.25	0.73	1.50	3.58	0.59	0.37
L50S-31DP-029	30	3.581	3.551	0.375	2.25	0.73	1.50	3.82	0.59	0.37
L50S-36DP-030	30	3.581	3.551	0.500	2.25	0.73	1.50	3.82	0.59	0.37
L50S-31DP-031	32	3.820	3.790	0.375	2.56	0.86	1.64	4.02	0.59	0.43
L50S-36DP-032	32	3.820	3.790	0.500	2.56	0.86	1.64	4.02	0.59	0.43

3HTD

TIMING

3HTD Pulleys

3mm Pitch (.1181 inch) -- For 6mm Wide Belts

3HTD



.1181 Circular Pitch

Materials

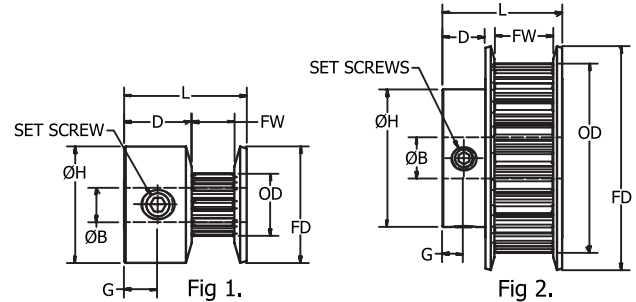
Aluminum

Finish: Clear Anodize

Double Flange

2 set screws @ 90°

(10 to 13 groove pulleys have 1 set screw)



Use 3HTD06 series belts

Part Number	Fig No.	No. of Grooves	Pitch Dia.	O.D.	B Bore Ø +0.001	H Hub Ø ±1/64	D Hub Lgth.	L Lgth. ±1/64	FD ±1/64	FW	G
3HTD06A-16DP-010	1	10	0.376	0.346	0.125	0.51	0.23	0.56	0.51	0.28	0.12
3HTD06A-19DP-010	1	10	0.376	0.346	0.1875	0.51	0.23	0.56	0.51	0.28	0.12
3HTD06A-16DP-011	1	11	0.414	0.384	0.125	0.53	0.23	0.56	0.53	0.28	0.12
3HTD06A-19DP-012	1	12	0.451	0.421	0.1875	0.58	0.23	0.56	0.58	0.28	0.12
3HTD06A-19DP-013	1	13	0.489	0.459	0.1875	0.61	0.23	0.56	0.61	0.28	0.12
3HTD06A-19DP-014	1	14	0.526	0.496	0.1875	0.64	0.23	0.56	0.64	0.28	0.12
3HTD06A-19DP-015	1	15	0.564	0.534	0.1875	0.69	0.23	0.56	0.69	0.28	0.12
3HTD06A-24DP-015	1	15	0.564	0.534	0.250	0.69	0.23	0.56	0.69	0.28	0.12
3HTD06A-19DP-016	1	16	0.602	0.572	0.1875	0.71	0.23	0.56	0.71	0.28	0.12
3HTD06A-19DP-017	1	17	0.639	0.609	0.1875	0.74	0.23	0.56	0.74	0.28	0.12
3HTD06A-24DP-018	2	18	0.677	0.647	0.250	0.44	0.30	0.69	0.79	0.28	0.15
3HTD06A-24DP-019	2	19	0.714	0.684	0.250	0.47	0.30	0.69	0.82	0.28	0.15
3HTD06A-24DP-020	2	20	0.752	0.722	0.250	0.50	0.30	0.69	0.90	0.28	0.15
3HTD06A-24DP-022	2	22	0.827	0.797	0.250	0.56	0.30	0.69	0.95	0.28	0.15
3HTD06A-24DP-024	2	24	0.902	0.872	0.250	0.63	0.30	0.69	1.03	0.28	0.15
3HTD06A-24DP-025	2	25	0.940	0.910	0.250	0.63	0.30	0.69	1.06	0.28	0.15
3HTD06A-24DP-026	2	26	0.977	0.947	0.250	0.63	0.30	0.69	1.11	0.28	0.15
3HTD06A-24DP-028	2	28	1.053	1.023	0.250	0.70	0.30	0.69	1.17	0.28	0.15
3HTD06A-24DP-030	2	30	1.128	1.098	0.250	0.78	0.30	0.69	1.25	0.28	0.15
3HTD06A-24DP-032	2	32	1.203	1.173	0.250	0.85	0.30	0.69	1.32	0.28	0.15
3HTD06A-24DP-034	2	34	1.278	1.248	0.250	0.92	0.31	0.72	1.40	0.28	0.16
3HTD06A-24DP-036	2	36	1.353	1.323	0.250	1.00	0.31	0.72	1.47	0.28	0.16
3HTD06A-24DP-038	2	38	1.429	1.399	0.250	1.08	0.31	0.72	1.55	0.28	0.16
3HTD06A-24DP-040	2	40	1.504	1.474	0.250	1.15	0.31	0.72	1.63	0.28	0.16
3HTD06A-24DP-044	2	44	1.654	1.624	0.250	1.30	0.31	0.72	1.78	0.28	0.16

3HTD

TIMING

3HTD Pulleys

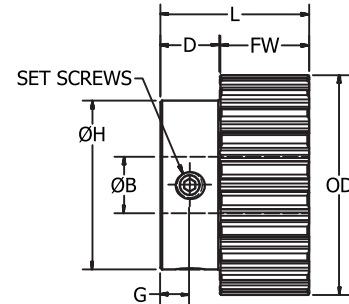
3mm Pitch (.1181 inch) -- For 6mm Wide Belts

3HTD

.1181 Circular Pitch

Materials

Aluminum
Finish: Clear Anodize
 No Flange
 2 set screws @ 90°

**Use 3HTD06 series belts**

Part Number	No. of Grooves	Pitch Dia.	O.D.	B Bore Ø +0.001	H Hub Ø ±1/64	D Hub Lgth.	L Lgth. ±1/64	FW	G
3HTD06A-24NP-018	18	0.677	0.647	0.250	0.44	0.30	0.69	0.39	0.15
3HTD06A-24NP-019	19	0.714	0.684	0.250	0.47	0.30	0.69	0.39	0.15
3HTD06A-24NP-020	20	0.752	0.722	0.250	0.50	0.30	0.69	0.39	0.15
3HTD06A-24NP-022	22	0.827	0.797	0.250	0.56	0.30	0.69	0.39	0.15
3HTD06A-24NP-024	24	0.902	0.872	0.250	0.63	0.30	0.69	0.39	0.15
3HTD06A-24NP-025	25	0.940	0.910	0.250	0.63	0.30	0.69	0.39	0.15
3HTD06A-24NP-026	26	0.977	0.947	0.250	0.63	0.30	0.69	0.39	0.15
3HTD06A-24NP-028	28	1.053	1.023	0.250	0.70	0.30	0.69	0.39	0.15
3HTD06A-24NP-030	30	1.128	1.098	0.250	0.78	0.30	0.69	0.39	0.15
3HTD06A-24NP-032	32	1.203	1.173	0.250	0.85	0.30	0.69	0.39	0.15
3HTD06A-24NP-034	34	1.278	1.248	0.250	0.92	0.31	0.72	0.41	0.16
3HTD06A-24NP-036	36	1.353	1.323	0.250	1.00	0.31	0.72	0.41	0.16
3HTD06A-24NP-038	38	1.429	1.399	0.250	1.08	0.31	0.72	0.41	0.16
3HTD06A-24NP-040	40	1.504	1.474	0.250	1.15	0.31	0.72	0.41	0.16
3HTD06A-24NP-044	44	1.654	1.624	0.250	1.30	0.31	0.72	0.41	0.16
3HTD06A-27NP-045	45	1.692	1.662	0.3125	1.25	0.33	0.73	0.41	0.16
3HTD06A-27NP-048	48	1.805	1.775	0.3125	1.25	0.33	0.73	0.41	0.16
3HTD06A-27NP-050	50	1.880	1.850	0.3125	1.25	0.33	0.73	0.41	0.16
3HTD06A-27NP-056	56	2.105	2.075	0.3125	1.25	0.33	0.73	0.41	0.16
3HTD06A-27NP-060	60	2.256	2.226	0.3125	1.25	0.33	0.73	0.41	0.16
3HTD06A-27NP-062	62	2.331	2.301	0.3125	1.25	0.33	0.73	0.41	0.16
3HTD06A-27NP-068	68	2.556	2.526	0.3125	1.25	0.33	0.73	0.41	0.16
3HTD06A-27NP-072	72	2.707	2.677	0.3125	1.25	0.33	0.73	0.41	0.16
3HTD06A-27NP-080	80	3.008	2.978	0.3125	1.25	0.33	0.73	0.41	0.16

3HTD

TIMING

3HTD Pulleys

3mm Pitch (.1181 inch) -- For 9mm Wide Belts

3HTD

.1181 Circular Pitch

Materials

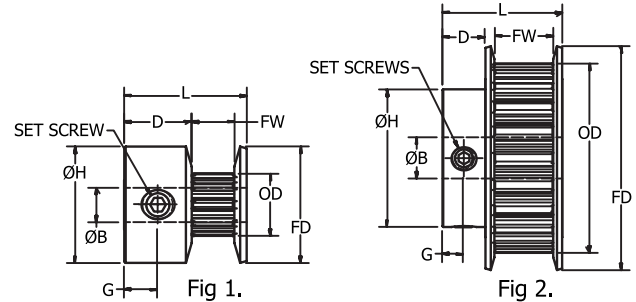
Aluminum

Finish: Clear Anodize

Double Flange

2 set screws @ 90°

(10 to 13 groove pulleys have 1 set screw)

**Use 3HTD09 series belts**

Part Number	Fig No.	No. of Grooves	Pitch Dia.	O.D.	B Bore Ø +0.001	H Hub Ø ±1/64	D Hub Lgth.	L Lgth. ±1/64	FD ±1/64	FW	G
3HTD09A-16DP-010	1	10	0.376	0.346	0.125	0.51	0.23	0.69	0.51	0.40	0.12
3HTD09A-16DP-011	1	11	0.414	0.384	0.125	0.53	0.23	0.69	0.53	0.40	0.12
3HTD09A-19DP-012	1	12	0.451	0.421	0.1875	0.58	0.23	0.69	0.58	0.40	0.12
3HTD09A-19DP-013	1	13	0.489	0.459	0.1875	0.61	0.23	0.69	0.61	0.40	0.12
3HTD09A-19DP-014	1	14	0.526	0.496	0.1875	0.64	0.23	0.69	0.64	0.40	0.12
3HTD09A-19DP-015	1	15	0.564	0.534	0.1875	0.69	0.23	0.69	0.69	0.40	0.12
3HTD09A-19DP-016	1	16	0.602	0.572	0.1875	0.71	0.23	0.69	0.71	0.40	0.12
3HTD09A-19DP-017	1	17	0.639	0.609	0.1875	0.74	0.23	0.69	0.74	0.40	0.12
3HTD09A-24DP-018	2	18	0.677	0.647	0.250	0.44	0.30	0.81	0.79	0.40	0.15
3HTD09A-24DP-019	2	19	0.714	0.684	0.250	0.47	0.30	0.81	0.82	0.40	0.15
3HTD09A-24DP-020	2	20	0.752	0.722	0.250	0.50	0.30	0.81	0.90	0.40	0.15
3HTD09A-24DP-022	2	22	0.827	0.797	0.250	0.56	0.30	0.81	0.95	0.40	0.15
3HTD09A-24DP-024	2	24	0.902	0.872	0.250	0.63	0.30	0.81	1.03	0.40	0.15
3HTD09A-24DP-025	2	25	0.940	0.910	0.250	0.63	0.30	0.81	1.06	0.40	0.15
3HTD09A-24DP-026	2	26	0.977	0.947	0.250	0.63	0.30	0.81	1.11	0.40	0.15
3HTD09A-24DP-028	2	28	1.053	1.023	0.250	0.70	0.30	0.81	1.17	0.40	0.15
3HTD09A-24DP-030	2	30	1.128	1.098	0.250	0.78	0.30	0.81	1.25	0.40	0.15
3HTD09A-24DP-032	2	32	1.203	1.173	0.250	0.85	0.30	0.81	1.32	0.40	0.15
3HTD09A-24DP-034	2	34	1.278	1.248	0.250	0.92	0.30	0.84	1.40	0.40	0.16
3HTD09A-24DP-036	2	36	1.353	1.323	0.250	1.00	0.30	0.84	1.47	0.40	0.16
3HTD09A-24DP-038	2	38	1.429	1.399	0.250	1.08	0.30	0.84	1.55	0.40	0.16
3HTD09A-24DP-040	2	40	1.504	1.474	0.250	1.15	0.30	0.84	1.63	0.40	0.16
3HTD09A-24DP-044	2	44	1.654	1.624	0.250	1.30	0.30	0.84	1.78	0.40	0.16

3HTD

TIMING

3HTD Pulleys

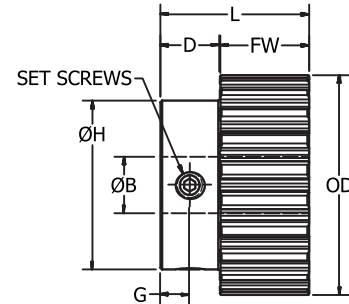
3mm Pitch (.1181 inch) -- For 9mm Wide Belts

3HTD

.1181 Circular Pitch

Materials

Aluminum
Finish: Clear Anodize
 No Flange
 2 set screws @ 90°

**Use 3HTD09 series belts**

Part Number	No. of Grooves	Pitch Dia.	O.D.	B Bore Ø +0.001	H Hub Ø ±1/64	D Hub Lgth.	L Lgth. ±1/64	FW	G
3HTD09A-24NP-018	18	0.677	0.647	0.250	0.44	0.00	0.81	0.51	0.15
3HTD09A-24NP-019	19	0.714	0.684	0.250	0.47	0.30	0.81	0.51	0.15
3HTD09A-24NP-020	20	0.752	0.722	0.250	0.50	0.30	0.81	0.51	0.15
3HTD09A-24NP-022	22	0.827	0.797	0.250	0.56	0.30	0.81	0.51	0.15
3HTD09A-24NP-024	24	0.902	0.872	0.250	0.63	0.30	0.81	0.51	0.15
3HTD09A-24NP-025	25	0.940	0.910	0.250	0.63	0.30	0.81	0.51	0.15
3HTD09A-24NP-026	26	0.977	0.947	0.250	0.63	0.30	0.81	0.51	0.15
3HTD09A-24NP-028	28	1.053	1.023	0.250	0.70	0.30	0.81	0.51	0.15
3HTD09A-24NP-030	30	1.128	1.098	0.250	0.78	0.30	0.81	0.51	0.15
3HTD09A-24NP-032	32	1.203	1.173	0.250	0.85	0.30	0.81	0.51	0.15
3HTD09A-24NP-034	34	1.278	1.248	0.250	0.92	0.31	0.84	0.53	0.16
3HTD09A-24NP-036	36	1.353	1.323	0.250	1.00	0.31	0.84	0.53	0.16
3HTD09A-24NP-038	38	1.429	1.399	0.250	1.08	0.31	0.84	0.53	0.16
3HTD09A-24NP-040	40	1.504	1.474	0.250	1.15	0.31	0.84	0.53	0.16
3HTD09A-24NP-044	44	1.654	1.624	0.250	1.30	0.31	0.84	0.53	0.16
3HTD09A-27NP-045	45	1.692	1.662	0.3125	1.25	0.38	0.88	0.50	0.19
3HTD09A-27NP-048	48	1.805	1.775	0.3125	1.25	0.38	0.88	0.50	0.19
3HTD09A-27NP-050	50	1.880	1.850	0.3125	1.25	0.38	0.88	0.50	0.19
3HTD09A-27NP-056	56	2.105	2.075	0.3125	1.25	0.38	0.88	0.50	0.19
3HTD09A-27NP-060	60	2.256	2.226	0.3125	1.25	0.38	0.88	0.50	0.19
3HTD09A-27NP-062	62	2.331	2.301	0.3125	1.25	0.38	0.88	0.50	0.19
3HTD09A-27NP-068	68	2.556	2.526	0.3125	1.25	0.38	0.88	0.50	0.19
3HTD09A-27NP-072	72	2.707	2.677	0.3125	1.25	0.38	0.88	0.50	0.19
3HTD09A-27NP-080	80	3.008	2.978	0.3125	1.25	0.38	0.88	0.50	0.19

5HTD

TIMING

5HTD Pulleys

5mm Pitch (.1968 inch) -- For 9mm Wide Belts

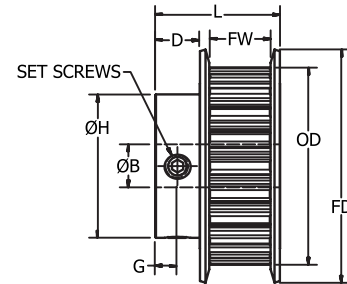
5HTD



.1969 Circular Pitch

Materials

Aluminum
Finish: Clear Anodize
 Double Flange
 2 set screws @ 90°



Use 5HTD09 series belts

Part Number	No. of Grooves	Pitch Dia.	O.D.	B Bore Ø +0.001	H Hub Ø ±1/64	D Hub Lgth.	L Lgth. ±1/64	FD ±1/64	FW	G
5HTD09A-24DP-012	12	0.752	0.707	0.250	0.44	0.25	0.80	0.88	0.42	0.13
5HTD09A-24DP-013	13	0.815	0.770	0.250	0.50	0.25	0.80	0.94	0.42	0.13
5HTD09A-24DP-014	14	0.877	0.832	0.250	0.50	0.25	0.80	1.00	0.42	0.13
5HTD09A-24DP-015	15	0.940	0.895	0.250	0.56	0.25	0.80	1.06	0.42	0.13
5HTD09A-24DP-016	16	1.003	0.958	0.250	0.56	0.25	0.80	1.09	0.42	0.13
5HTD09A-24DP-017	17	1.065	1.020	0.250	0.63	0.25	0.80	1.19	0.42	0.13
5HTD09A-24DP-018	18	1.128	1.083	0.250	0.69	0.25	0.80	1.25	0.42	0.13
5HTD09A-24DP-019	19	1.191	1.146	0.250	0.75	0.25	0.80	1.31	0.42	0.13
5HTD09A-24DP-020	20	1.253	1.208	0.250	0.81	0.25	0.80	1.38	0.42	0.13
5HTD09A-24DP-022	22	1.379	1.334	0.250	0.94	0.25	0.80	1.50	0.42	0.13
5HTD09A-24DP-024	24	1.504	1.459	0.250	1.00	0.31	0.94	1.63	0.42	0.16
5HTD09A-24DP-025	25	1.566	1.521	0.250	1.00	0.31	0.94	1.69	0.42	0.16
5HTD09A-24DP-026	26	1.629	1.584	0.250	1.06	0.31	0.94	1.75	0.42	0.16
5HTD09A-24DP-028	28	1.754	1.709	0.250	1.19	0.31	0.94	1.88	0.42	0.16
5HTD09A-24DP-030	30	1.880	1.835	0.250	1.19	0.31	0.94	2.00	0.42	0.16
5HTD09A-24DP-032	32	2.005	1.960	0.250	1.25	0.31	0.94	2.13	0.42	0.16
5HTD09A-24DP-034	34	2.130	2.085	0.250	1.38	0.31	0.94	2.25	0.42	0.16

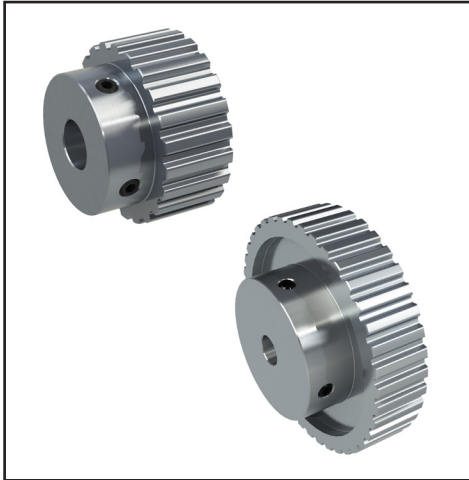
5HTD

TIMING

5HTD Pulleys

5mm Pitch (.1968 inch) -- For 9mm Wide Belts

5HTD



.1969 Circular Pitch

Materials

Aluminum

Finish: Clear Anodize

Double Flange

2 set screws @ 90°

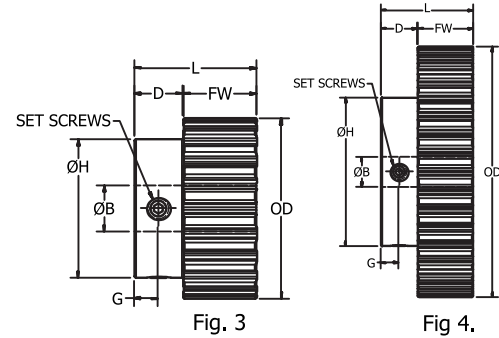
(12 & 13 groove pulleys
have 1 set screw)

Fig. 3

Fig. 4.

Use 5HTD09 series belts

Part Number	Fig. No.	No. of Grooves	Pitch Dia.	O.D.	B Bore Ø +0.001	H Hub Ø ±1/64	D Hub Lgth.	L Lgth. ±1/64	FW	G
5HTD09A-24NP-012	3	12	0.752	0.707	0.250	0.44	0.25	0.80	0.54	0.13
5HTD09A-24NP-013	3	13	0.815	0.770	0.250	0.50	0.25	0.80	0.54	0.13
5HTD09A-24NP-014	3	14	0.877	0.832	0.250	0.50	0.25	0.80	0.54	0.13
5HTD09A-24NP-015	3	15	0.940	0.895	0.250	0.56	0.25	0.80	0.54	0.13
5HTD09A-24NP-016	3	16	1.003	0.958	0.250	0.56	0.25	0.80	0.54	0.13
5HTD09A-24NP-017	3	17	1.065	1.020	0.250	0.63	0.25	0.80	0.54	0.13
5HTD09A-24NP-018	3	18	1.128	1.083	0.250	0.69	0.25	0.80	0.54	0.13
5HTD09A-24NP-019	3	19	1.191	1.146	0.250	0.75	0.25	0.80	0.54	0.13
5HTD09A-24NP-020	3	20	1.253	1.208	0.250	0.81	0.25	0.80	0.54	0.13
5HTD09A-24NP-022	3	22	1.379	1.334	0.250	0.94	0.25	0.80	0.54	0.13
5HTD09A-24NP-024	3	24	1.504	1.459	0.250	1.00	0.31	0.86	0.54	0.16
5HTD09A-24NP-025	3	25	1.566	1.521	0.250	1.00	0.31	0.86	0.54	0.16
5HTD09A-24NP-026	3	26	1.629	1.584	0.250	1.06	0.31	0.86	0.54	0.16
5HTD09A-24NP-028	3	28	1.754	1.709	0.250	1.19	0.31	0.86	0.54	0.16
5HTD09A-24NP-030	3	30	1.880	1.835	0.250	1.19	0.31	0.86	0.54	0.16
5HTD09A-24NP-032	3	32	2.005	1.960	0.250	1.25	0.31	0.86	0.54	0.16
5HTD09A-24NP-034	3	34	2.130	2.085	0.250	1.38	0.31	0.86	0.54	0.16
5HTD09A-24NP-036	3	36	2.256	2.211	0.3125	1.50	0.39	0.94	0.54	0.20
5HTD09A-24NP-038	3	38	2.381	2.336	0.3125	1.50	0.39	0.94	0.54	0.20
5HTD09A-24NP-040	3	40	2.506	2.461	0.3125	1.50	0.39	0.94	0.54	0.20
5HTD09A-24NP-044	4	44	2.757	2.712	0.3125	1.50	0.39	0.94	0.54	0.20
5HTD09A-24NP-048	4	48	3.008	2.963	0.375	1.50	0.39	0.94	0.54	0.20
5HTD09A-24NP-050	4	50	3.133	3.088	0.375	1.50	0.39	0.94	0.54	0.20
5HTD09A-24NP-056	4	56	3.509	3.464	0.375	1.50	0.39	0.94	0.54	0.20
5HTD09A-24NP-060	4	60	3.760	3.715	0.375	1.50	0.39	0.94	0.54	0.20
5HTD09A-24NP-062	4	62	3.885	3.840	0.375	1.50	0.39	0.94	0.54	0.20
5HTD09A-24NP-070	4	70	4.386	4.341	0.375	1.50	0.39	0.94	0.54	0.20
5HTD09A-24NP-072	4	72	4.511	4.466	0.375	1.50	0.39	0.94	0.54	0.20

5HTD

TIMING

5HTD

5HTD Pulleys

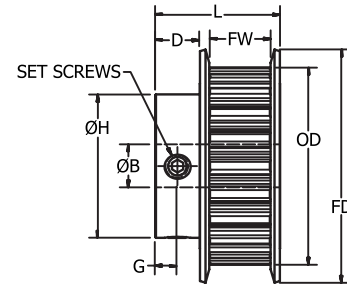
5mm Pitch (.1968 inch) -- For 15mm Wide Belts



.1969 Circular Pitch

Materials

Aluminum
Finish: Clear Anodize
 Double Flange
 2 set screws @ 90°

**Use 5HTD15 series belts**

Part Number	No. of Grooves	Pitch Dia.	O.D.	B Bore Ø +0.001	H Hub Ø ±1/64	D Hub Lgth.	L Lgth. ±1/64	FD ±1/64	FW	G
5HTD15A-24DP-012	12	0.752	0.707	0.250	0.44	0.25	1.03	0.88	0.65	0.13
5HTD15A-24DP-013	13	0.815	0.770	0.250	0.50	0.25	1.03	0.94	0.65	0.13
5HTD15A-24DP-014	14	0.877	0.832	0.250	0.50	0.25	1.03	1.00	0.65	0.13
5HTD15A-24DP-015	15	0.940	0.895	0.250	0.56	0.25	1.03	1.06	0.65	0.13
5HTD15A-24DP-016	16	1.003	0.958	0.250	0.56	0.25	1.03	1.09	0.65	0.13
5HTD15A-24DP-017	17	1.065	1.020	0.250	0.63	0.25	1.03	1.19	0.65	0.13
5HTD15A-24DP-018	18	1.128	1.083	0.250	0.69	0.25	1.03	1.25	0.65	0.13
5HTD15A-24DP-019	19	1.191	1.146	0.250	0.75	0.25	1.03	1.31	0.65	0.13
5HTD15A-24DP-020	20	1.253	1.208	0.250	0.81	0.25	1.03	1.38	0.65	0.13
5HTD15A-24DP-022	22	1.379	1.334	0.250	0.94	0.25	1.03	1.50	0.65	0.13
5HTD15A-24DP-024	24	1.504	1.459	0.250	1.00	0.31	1.09	1.63	0.65	0.16
5HTD15A-24DP-025	25	1.566	1.521	0.250	1.00	0.31	1.09	1.69	0.65	0.16
5HTD15A-24DP-026	26	1.629	1.584	0.250	1.06	0.31	1.09	1.75	0.65	0.16
5HTD15A-24DP-028	28	1.754	1.709	0.250	1.19	0.31	1.09	1.88	0.65	0.16
5HTD15A-24DP-030	30	1.880	1.835	0.250	1.19	0.31	1.09	2.00	0.65	0.16
5HTD15A-24DP-032	32	2.005	1.960	0.250	1.25	0.31	1.09	2.13	0.65	0.16
5HTD15A-24DP-034	34	2.130	2.085	0.250	1.38	0.31	1.09	2.25	0.65	0.16

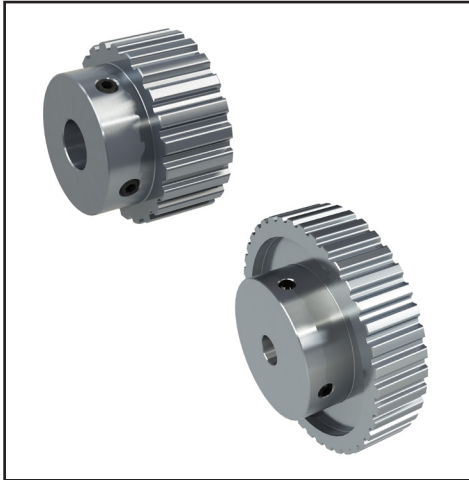
5HTD

TIMING

5HTD Pulleys

5mm Pitch (.1968 inch) -- For 15mm Wide Belts

5HTD



.1969 Circular Pitch

Materials

Aluminum

Finish: Clear Anodize

No Flange

2 set screws @ 90°

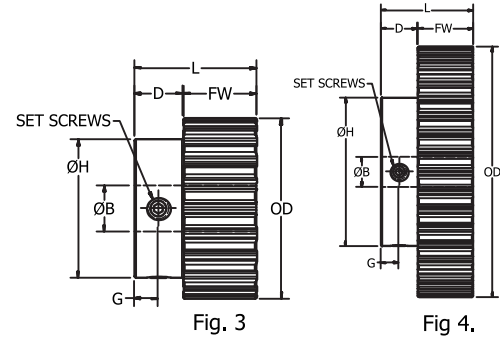
(12 & 13 groove pulleys
have 1 set screw)

Fig. 3

Fig. 4.

Use 5HTD15 series belts

Part Number	Fig. No.	No. of Grooves	Pitch Dia.	O.D.	B Bore Ø +0.001	H Hub Ø ±1/64	D Hub Lgth.	L Lgth. ±1/64	FW	G
5HTD15A-24NP-012	3	12	0.752	0.707	0.250	0.44	0.25	1.03	0.78	0.13
5HTD15A-24NP-013	3	13	0.815	0.770	0.250	0.50	0.25	1.03	0.78	0.13
5HTD15A-24NP-014	3	14	0.877	0.832	0.250	0.50	0.25	1.03	0.78	0.13
5HTD15A-24NP-015	3	15	0.940	0.895	0.250	0.56	0.25	1.03	0.78	0.13
5HTD15A-24NP-016	3	16	1.003	0.958	0.250	0.56	0.25	1.03	0.78	0.13
5HTD15A-24NP-017	3	17	1.065	1.020	0.250	0.63	0.25	1.03	0.78	0.13
5HTD15A-24NP-018	3	18	1.128	1.083	0.250	0.69	0.25	1.03	0.78	0.13
5HTD15A-24NP-019	3	19	1.191	1.146	0.250	0.75	0.25	1.03	0.78	0.13
5HTD15A-24NP-020	3	20	1.253	1.208	0.250	0.81	0.25	1.03	0.78	0.13
5HTD15A-24NP-022	3	22	1.379	1.334	0.250	0.94	0.25	1.03	0.78	0.13
5HTD15A-24NP-024	3	24	1.504	1.459	0.250	1.00	0.31	1.03	0.78	0.16
5HTD15A-24NP-025	3	25	1.566	1.521	0.250	1.00	0.31	1.03	0.78	0.16
5HTD15A-24NP-026	3	26	1.629	1.584	0.250	1.06	0.31	1.03	0.78	0.16
5HTD15A-24NP-028	3	28	1.754	1.709	0.250	1.19	0.31	1.03	0.78	0.16
5HTD15A-24NP-030	3	30	1.880	1.835	0.250	1.19	0.31	1.03	0.78	0.16
5HTD15A-24NP-032	3	32	2.005	1.960	0.250	1.25	0.31	1.03	0.78	0.16
5HTD15A-24NP-034	3	34	2.130	2.085	0.250	1.38	0.31	1.03	0.78	0.16
5HTD15A-27NP-036	3	36	2.256	2.211	0.3125	1.50	0.41	1.09	0.78	0.20
5HTD15A-27NP-038	3	38	2.381	2.336	0.3125	1.50	0.41	1.09	0.78	0.20
5HTD15A-27NP-040	3	40	2.506	2.461	0.3125	1.50	0.41	1.09	0.78	0.20
5HTD15A-27NP-044	4	44	2.757	2.712	0.3125	1.50	0.41	1.09	0.78	0.20
5HTD15A-31NP-048	4	48	3.008	2.963	0.375	1.50	0.41	1.09	0.78	0.20
5HTD15A-31NP-050	4	50	3.133	3.088	0.375	1.50	0.41	1.09	0.78	0.20
5HTD15A-31NP-056	4	56	3.509	3.464	0.375	1.50	0.41	1.09	0.78	0.20
5HTD15A-31NP-060	4	60	3.760	3.715	0.375	1.50	0.41	1.09	0.78	0.20
5HTD15A-31NP-062	4	62	3.885	3.840	0.375	1.50	0.41	1.09	0.78	0.20
5HTD15A-31NP-070	4	70	4.386	4.341	0.375	1.50	0.41	1.09	0.78	0.20
5HTD15A-31NP-072	4	72	4.511	4.466	0.375	1.50	0.41	1.09	0.78	0.20

2GT

TIMING

GT®2 Pulleys

2mm Pitch (.0787 inch) -- For 3mm Wide Belts

2GT



.0787 Circular Pitch

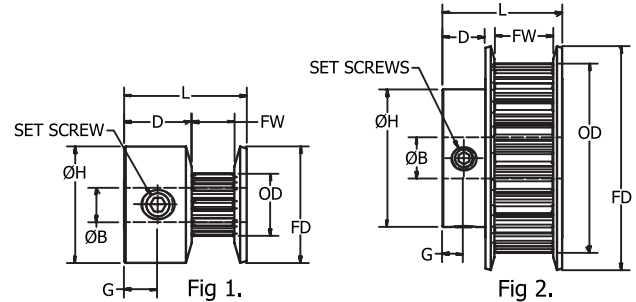
Materials

Aluminum

Finish: Clear Anodize

Double Flange

2 set screws @ 90°

(12 to 16 groove pulleys
have 1 set screw)

Use 2GT03 series belts

Part Number	Fig No.	No. of Grooves	Pitch Dia.	O.D.	B Bore Ø +0.001	H Hub Ø ±1/64	D Hub Lgth.	L Lgth. ±1/64	FD ±1/64	FW	G
2GT03A-16DP-012	1	12	0.301	0.281	0.125	0.48	0.23	0.44	0.48	0.16	0.11
2GT03A-16DP-013	1	13	0.326	0.306	0.125	0.51	0.23	0.44	0.51	0.16	0.11
2GT03A-16DP-014	1	14	0.351	0.331	0.125	0.53	0.23	0.44	0.53	0.16	0.11
2GT03A-19DP-015	1	15	0.376	0.356	0.1875	0.56	0.23	0.44	0.56	0.16	0.11
2GT03A-19DP-016	1	16	0.401	0.381	0.1875	0.58	0.23	0.44	0.58	0.16	0.11
2GT03A-19DP-017	2	17	0.426	0.406	0.1875	0.31	0.53	0.48	0.64	0.16	0.11
2GT03A-24DP-017	1	17	0.426	0.406	0.250	0.64	0.23	0.44	0.64	0.16	0.11
2GT03A-19DP-018	2	18	0.451	0.431	0.1875	0.31	0.53	0.48	0.64	0.16	0.11
2GT03A-24DP-018	1	18	0.451	0.431	0.250	0.64	0.23	0.44	0.64	0.16	0.11
2GT03A-19DP-019	2	19	0.476	0.456	0.1875	0.31	0.53	0.48	0.64	0.16	0.11
2GT03A-24DP-019	1	19	0.476	0.456	0.250	0.64	0.23	0.44	0.64	0.16	0.11
2GT03A-19DP-020	2	20	0.501	0.481	0.1875	0.36	0.53	0.48	0.69	0.16	0.11
2GT03A-24DP-020	1	20	0.501	0.481	0.250	0.69	0.23	0.44	0.69	0.16	0.11
2GT03A-19DP-021	2	21	0.526	0.506	0.1875	0.39	0.53	0.48	0.71	0.16	0.11
2GT03A-24DP-021	1	21	0.526	0.506	0.250	0.71	0.23	0.44	0.71	0.16	0.11
2GT03A-19DP-022	2	22	0.551	0.531	0.1875	0.39	0.53	0.48	0.74	0.16	0.11
2GT03A-24DP-022	1	22	0.551	0.531	0.250	0.74	0.23	0.44	0.74	0.16	0.11
2GT03A-24DP-024	2	24	0.602	0.582	0.250	0.44	0.25	0.52	0.79	0.16	0.13
2GT03A-24DP-025	2	25	0.627	0.607	0.250	0.47	0.25	0.52	0.82	0.16	0.13
2GT03A-24DP-026	2	26	0.652	0.632	0.250	0.49	0.25	0.52	0.84	0.16	0.13
2GT03A-24DP-028	2	28	0.702	0.682	0.250	0.49	0.25	0.52	0.90	0.16	0.13
2GT03A-24DP-030	2	30	0.752	0.732	0.250	0.55	0.25	0.52	0.95	0.16	0.13
2GT03A-24DP-032	2	32	0.802	0.782	0.250	0.60	0.25	0.52	1.00	0.16	0.13
2GT03A-24DP-036	2	36	0.902	0.882	0.250	0.68	0.25	0.52	1.11	0.16	0.13
2GT03A-24DP-040	2	40	1.003	0.983	0.250	0.75	0.25	0.53	1.21	0.16	0.13
2GT03A-24DP-042	2	42	1.053	1.033	0.250	0.81	0.25	0.53	1.26	0.16	0.13
2GT03A-24DP-044	2	44	1.103	1.083	0.250	0.86	0.25	0.53	1.32	0.16	0.13
2GT03A-24DP-045	2	45	1.128	1.108	0.250	0.90	0.25	0.53	1.34	0.16	0.13
2GT03A-24DP-048	2	48	1.203	1.183	0.250	0.94	0.25	0.53	1.42	0.16	0.13
2GT03A-24DP-050	2	50	1.253	1.233	0.250	0.94	0.25	0.53	1.47	0.16	0.13
2GT03A-24DP-056	2	56	1.404	1.384	0.250	1.03	0.25	0.53	1.58	0.16	0.13
2GT03A-24DP-060	2	60	1.504	1.484	0.250	1.22	0.25	0.53	1.73	0.16	0.13

2GT

TIMING

GT®2 Pulleys

2mm Pitch (.0787 inch) -- For 6mm Wide Belts

2GT



.0787 Circular Pitch

Materials

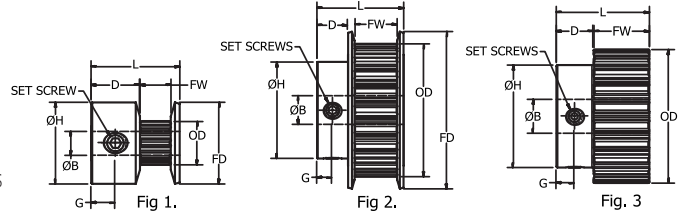
Aluminum

Finish: Clear Anodize

Double Flange &

No Flange

2 set screws @ 90°

(12 to 16 groove pulleys
have 1 set screw)

Use 2GT06 series belts

Part Number	Fig No.	No. of Grooves	Pitch Dia.	O.D.	B Bore Ø +0.001	H Hub Ø ±1/64	D Hub Lgth.	L Lgth. ±1/64	FD ±1/64	FW	G
2GT06A-16DP-012	1	12	0.301	0.281	0.125	0.48	0.23	0.56	0.48	0.29	0.11
2GT06A-16DP-013	1	13	0.326	0.306	0.125	0.51	0.23	0.56	0.51	0.29	0.11
2GT06A-16DP-014	1	14	0.351	0.331	0.125	0.53	0.23	0.56	0.53	0.29	0.11
2GT06A-19DP-015	1	15	0.376	0.356	0.1875	0.56	0.23	0.56	0.56	0.29	0.11
2GT06A-19DP-016	1	16	0.401	0.381	0.1875	0.58	0.23	0.56	0.58	0.29	0.11
2GT06A-19DP-017	2	17	0.426	0.406	0.1875	0.31	0.23	0.63	0.64	0.29	0.11
2GT06A-24DP-017	1	17	0.426	0.406	0.250	0.64	0.23	0.56	0.64	0.29	0.11
2GT06A-19DP-018	2	18	0.451	0.431	0.1875	0.31	0.23	0.63	0.64	0.29	0.11
2GT06A-24DP-018	1	18	0.451	0.431	0.250	0.64	0.23	0.56	0.64	0.29	0.11
2GT06A-19DP-019	2	19	0.476	0.456	0.1875	0.34	0.23	0.63	0.64	0.29	0.11
2GT06A-24DP-019	1	19	0.476	0.456	0.250	0.64	0.23	0.56	0.64	0.29	0.11
2GT06A-19DP-020	2	20	0.501	0.481	0.1875	0.36	0.23	0.63	0.69	0.29	0.11
2GT06A-24DP-020	1	20	0.501	0.481	0.250	0.69	0.23	0.56	0.69	0.29	0.11
2GT06A-19DP-021	2	21	0.526	0.506	0.1875	0.39	0.23	0.63	0.71	0.29	0.11
2GT06A-24DP-021	1	21	0.526	0.506	0.250	0.71	0.23	0.56	0.71	0.29	0.11
2GT06A-19DP-022	2	22	0.551	0.531	0.1875	0.39	0.23	0.63	0.74	0.29	0.11
2GT06A-24DP-022	1	22	0.551	0.531	0.250	0.74	0.23	0.56	0.74	0.29	0.11
2GT06A-24DP-024	2	24	0.602	0.582	0.250	0.44	0.30	0.69	0.79	0.29	0.16
2GT06A-24DP-025	2	25	0.627	0.607	0.250	0.47	0.30	0.69	0.82	0.29	0.16
2GT06A-24DP-026	2	26	0.652	0.632	0.250	0.49	0.30	0.69	0.84	0.29	0.16
2GT06A-24DP-028	2	28	0.702	0.682	0.250	0.49	0.30	0.69	0.90	0.29	0.16
2GT06A-24DP-030	2	30	0.752	0.732	0.250	0.55	0.30	0.69	0.95	0.29	0.16
2GT06A-24DP-032	2	32	0.802	0.782	0.250	0.60	0.30	0.69	1.00	0.29	0.16
2GT06A-24DP-036	2	36	0.902	0.882	0.250	0.68	0.30	0.69	1.11	0.29	0.16
2GT06A-24DP-040	2	40	1.003	0.983	0.250	0.75	0.31	0.72	1.21	0.29	0.16
2GT06A-24DP-042	2	42	1.053	1.033	0.250	0.81	0.31	0.72	1.26	0.29	0.16
2GT06A-24DP-044	2	44	1.103	1.083	0.250	0.86	0.31	0.72	1.32	0.29	0.16
2GT06A-24DP-045	2	45	1.128	1.108	0.250	0.90	0.31	0.72	1.34	0.29	0.16
2GT06A-24DP-048	2	48	1.203	1.183	0.250	0.94	0.31	0.72	1.42	0.29	0.16
2GT06A-24DP-050	2	50	1.253	1.233	0.250	0.94	0.31	0.72	1.47	0.29	0.16
2GT06A-24DP-056	2	56	1.404	1.384	0.250	1.03	0.31	0.72	1.58	0.29	0.16
2GT06A-24DP-060	2	60	1.504	1.484	0.250	1.22	0.31	0.72	1.73	0.29	0.16
2GT06A-24NP-060	3	60	1.504	1.484	0.250	1.15	0.38	0.75	---	0.38	0.19
2GT06A-24NP-062	3	62	1.554	1.534	0.250	1.15	0.38	0.75	---	0.38	0.19
2GT06A-24NP-068	3	68	1.704	1.684	0.250	1.20	0.38	0.75	---	0.38	0.19
2GT06A-24NP-072	3	72	1.805	1.785	0.250	1.20	0.38	0.75	---	0.38	0.19
2GT06A-27NP-074	3	74	1.855	1.835	0.3125	1.22	0.38	0.75	---	0.38	0.19
2GT06A-27NP-080	3	80	2.005	1.985	0.3125	1.50	0.38	0.75	---	0.38	0.19
2GT06A-27NP-090	3	90	2.256	2.236	0.3125	1.50	0.38	0.75	---	0.38	0.19
2GT06A-27NP-100	3	100	2.506	2.486	0.3125	1.50	0.38	0.75	---	0.38	0.19
2GT06A-31NP-120	3	120	3.008	2.988	0.375	1.50	0.38	0.75	---	0.38	0.19

ondrives.us

1-888-260-7466

516-771-6444

sales@ondrivesus.com

www.ondrivesus.com

2GT

TIMING

GT®2 Pulleys

2mm Pitch (.0787 inch) -- For 9mm Wide Belts

2GT



.0787 Circular Pitch

Materials

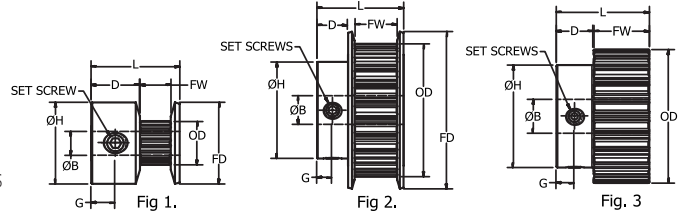
Aluminum

Finish: Clear Anodize

Double Flange &

No Flange

2 set screws @ 90°

(12 to 16 groove pulleys
have 1 set screw)

Use 2GT09 series belts

Part Number	Fig No.	No. of Grooves	Pitch Dia.	O.D.	B Bore Ø +0.001	H Hub Ø ±1/64	D Hub Lgth.	L Lgth. ±1/64	FD ±1/64	FW	G
2GT09A-16DP-012	1	12	0.301	0.281	0.125	0.48	0.23	0.69	0.48	0.41	0.11
2GT09A-16DP-013	1	13	0.326	0.306	0.125	0.51	0.23	0.69	0.51	0.41	0.11
2GT09A-16DP-014	1	14	0.351	0.331	0.125	0.53	0.23	0.69	0.53	0.41	0.11
2GT09A-19DP-015	1	15	0.376	0.356	0.1875	0.56	0.23	0.69	0.56	0.41	0.11
2GT09A-19DP-016	1	16	0.401	0.381	0.1875	0.58	0.23	0.69	0.58	0.41	0.11
2GT09A-19DP-017	2	17	0.426	0.406	0.1875	0.31	0.23	0.75	0.64	0.41	0.11
2GT09A-24DP-017	1	17	0.426	0.406	0.250	0.64	0.23	0.69	0.64	0.41	0.11
2GT09A-19DP-018	2	18	0.451	0.431	0.1875	0.31	0.23	0.75	0.64	0.41	0.11
2GT09A-24DP-018	1	18	0.451	0.431	0.250	0.64	0.23	0.69	0.64	0.41	0.11
2GT09A-19DP-019	2	19	0.476	0.456	0.1875	0.34	0.23	0.75	0.64	0.41	0.11
2GT09A-24DP-019	1	19	0.476	0.456	0.250	0.64	0.23	0.69	0.64	0.41	0.11
2GT09A-19DP-020	2	20	0.501	0.481	0.1875	0.36	0.23	0.75	0.69	0.41	0.11
2GT09A-24DP-020	1	20	0.501	0.481	0.250	0.69	0.23	0.69	0.69	0.41	0.11
2GT09A-19DP-021	2	21	0.526	0.506	0.1875	0.39	0.23	0.75	0.71	0.41	0.11
2GT09A-24DP-021	1	21	0.526	0.506	0.250	0.71	0.23	0.69	0.71	0.41	0.11
2GT09A-19DP-022	2	22	0.551	0.531	0.1875	0.39	0.23	0.75	0.74	0.41	0.11
2GT09A-24DP-022	1	22	0.551	0.531	0.250	0.74	0.23	0.69	0.74	0.41	0.11
2GT09A-24DP-024	2	24	0.602	0.582	0.250	0.44	0.30	0.81	0.79	0.41	0.16
2GT09A-24DP-025	2	25	0.627	0.607	0.250	0.47	0.30	0.81	0.82	0.41	0.16
2GT09A-24DP-026	2	26	0.652	0.632	0.250	0.49	0.30	0.81	0.84	0.41	0.16
2GT09A-24DP-028	2	28	0.702	0.682	0.250	0.49	0.30	0.81	0.90	0.41	0.16
2GT09A-24DP-030	2	30	0.752	0.732	0.250	0.55	0.30	0.81	0.95	0.41	0.16
2GT09A-24DP-032	2	32	0.802	0.782	0.250	0.60	0.30	0.81	1.00	0.41	0.16
2GT09A-24DP-036	2	36	0.902	0.882	0.250	0.68	0.30	0.81	1.11	0.41	0.16
2GT09A-24DP-040	2	40	1.003	0.983	0.250	0.75	0.31	0.84	1.21	0.41	0.16
2GT09A-24DP-042	2	42	1.053	1.033	0.250	0.81	0.31	0.84	1.26	0.41	0.16
2GT09A-24DP-044	2	44	1.103	1.083	0.250	0.86	0.31	0.84	1.32	0.41	0.16
2GT09A-24DP-045	2	45	1.128	1.108	0.250	0.90	0.31	0.84	1.34	0.41	0.16
2GT09A-24DP-048	2	48	1.203	1.183	0.250	0.94	0.31	0.84	1.42	0.41	0.16
2GT09A-24DP-050	2	50	1.253	1.233	0.250	0.94	0.31	0.84	1.47	0.41	0.16
2GT09A-24DP-056	2	56	1.404	1.384	0.250	1.03	0.31	0.84	1.58	0.41	0.16
2GT09A-24DP-060	2	60	1.504	1.484	0.250	1.22	0.31	0.84	1.73	0.41	0.16
2GT09A-24NP-060	3	60	1.504	1.484	0.250	1.15	0.38	0.88	---	0.50	0.19
2GT09A-24NP-062	3	62	1.554	1.534	0.250	1.15	0.38	0.88	---	0.50	0.19
2GT09A-24NP-068	3	68	1.704	1.684	0.250	1.20	0.38	0.88	---	0.50	0.19
2GT09A-24NP-072	3	72	1.805	1.785	0.250	1.20	0.38	0.88	---	0.50	0.19
2GT09A-27NP-074	3	74	1.855	1.835	0.3125	1.22	0.38	0.88	---	0.50	0.19
2GT09A-27NP-080	3	80	2.005	1.985	0.3125	1.50	0.38	0.88	---	0.50	0.19
2GT09A-27NP-090	3	90	2.256	2.236	0.3125	1.50	0.38	0.88	---	0.50	0.19
2GT09A-27NP-100	3	100	2.506	2.486	0.3125	1.50	0.38	0.88	---	0.50	0.19
2GT09A-31NP-120	3	120	3.008	2.988	0.375	1.50	0.38	0.88	---	0.50	0.19

ondrives.us

1-888-260-7466

sales@ondrivesus.com

516-771-6444

www.ondrivesus.com

3GT

TIMING

GT®2 Pulleys

3mm Pitch (.1181 inch) -- For 6mm Wide Belts

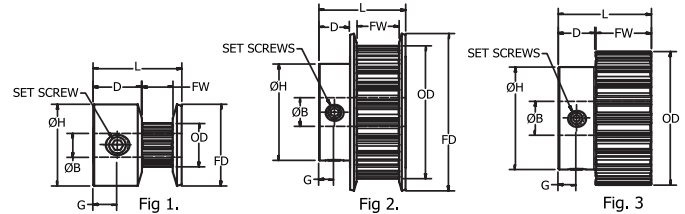
3GT



.1181 Circular Pitch

Materials

Aluminum
Finish: Clear Anodize
 Double Flange &
 No Flange
 2 set screws @ 90°



Use 3GT06 series belts

Part Number	Fig No.	No. of Grooves	Pitch Dia.	O.D.	B Bore Ø +0.001	H Hub Ø ±1/64	D Hub Lgth.	L Lgth. ±1/64	FD ±1/64	FW	G
3GT06A-19DP-016	1	16	0.602	0.572	0.1875	0.71	0.23	0.56	0.71	0.28	0.12
3GT06A-19DP-017	1	17	0.639	0.609	0.1875	0.74	0.23	0.56	0.74	0.28	0.12
3GT06A-24DP-018	2	18	0.677	0.647	0.250	0.44	0.30	0.69	0.79	0.28	0.15
3GT06A-24DP-019	2	19	0.714	0.684	0.250	0.47	0.30	0.69	0.82	0.28	0.15
3GT06A-24DP-020	2	20	0.752	0.722	0.250	0.50	0.30	0.69	0.90	0.28	0.15
3GT06A-24DP-021	2	21	0.790	0.760	0.250	0.50	0.30	0.69	0.90	0.28	0.15
3GT06A-24DP-022	2	22	0.827	0.797	0.250	0.56	0.30	0.69	0.95	0.28	0.15
3GT06A-24DP-024	2	24	0.902	0.872	0.250	0.63	0.30	0.69	1.03	0.28	0.15
3GT06A-24DP-025	2	25	0.940	0.910	0.250	0.63	0.30	0.69	1.06	0.28	0.15
3GT06A-24DP-026	2	26	0.977	0.947	0.250	0.63	0.30	0.69	1.11	0.28	0.15
3GT06A-24DP-028	2	28	1.053	1.023	0.250	0.70	0.30	0.69	1.17	0.28	0.15
3GT06A-24DP-030	2	30	1.128	1.098	0.250	0.78	0.30	0.69	1.25	0.28	0.15
3GT06A-24DP-032	2	32	1.203	1.173	0.250	0.85	0.30	0.69	1.32	0.28	0.15
3GT06A-24DP-034	2	34	1.278	1.248	0.250	0.92	0.31	0.72	1.40	0.28	0.16
3GT06A-24NP-034	3	34	1.278	1.248	0.250	0.92	0.31	0.72	---	0.41	0.16
3GT06A-24DP-036	2	36	1.353	1.323	0.250	1.00	0.31	0.72	1.47	0.28	0.16
3GT06A-24NP-036	3	36	1.353	1.323	0.250	1.00	0.31	0.72	---	0.41	0.16
3GT06A-24DP-038	2	38	1.429	1.399	0.250	1.08	0.31	0.72	1.55	0.28	0.16
3GT06A-24NP-038	3	38	1.429	1.399	0.250	1.08	0.33	0.73	---	0.41	0.16
3GT06A-24DP-040	2	40	1.504	1.474	0.250	1.15	0.31	0.72	1.63	0.28	0.16
3GT06A-24NP-040	3	40	1.504	1.474	0.250	1.15	0.33	0.73	---	0.41	0.16
3GT06A-24DP-044	2	44	1.654	1.624	0.250	1.30	0.31	0.72	1.78	0.28	0.16
3GT06A-24NP-044	3	44	1.654	1.624	0.250	1.30	0.33	0.73	---	0.41	0.16
3GT06A-24DP-045	2	45	1.692	1.662	0.250	1.30	0.31	0.72	1.78	0.28	0.16
3GT06A-27NP-045	3	45	1.692	1.662	0.3125	1.25	0.33	0.73	---	0.41	0.16
3GT06A-27NP-048	3	48	1.805	1.775	0.3125	1.25	0.33	0.73	---	0.41	0.16
3GT06A-27NP-050	3	50	1.880	1.850	0.3125	1.25	0.33	0.73	---	0.41	0.16
3GT06A-27NP-056	3	56	2.105	2.075	0.3125	1.25	0.33	0.73	---	0.41	0.16
3GT06A-27NP-060	3	60	2.256	2.226	0.3125	1.25	0.33	0.73	---	0.41	0.16
3GT06A-27NP-062	3	62	2.331	2.301	0.3125	1.25	0.33	0.73	---	0.41	0.16
3GT06A-27NP-068	3	68	2.557	2.527	0.3125	1.25	0.33	0.73	---	0.41	0.16
3GT06A-27NP-072	3	72	2.707	2.677	0.3125	1.25	0.33	0.73	---	0.41	0.16
3GT06A-27NP-080	3	80	3.008	2.978	0.3125	1.25	0.33	0.73	---	0.41	0.16

3GT

TIMING

GT®2 Pulleys

3mm Pitch (.1181 inch) -- For 9mm Wide Belts

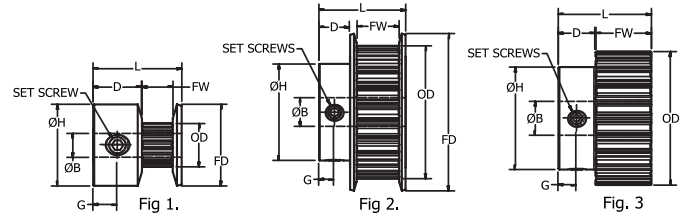
3GT



.1181 Circular Pitch

Materials

Aluminum
 Finish: Clear Anodize
 Double Flange &
 No Flange
 2 set screws @ 90°



Use 3GT09 series belts

Part Number	Fig No.	No. of Grooves	Pitch Dia.	O.D.	B Bore Ø +0.001	H Hub Ø ±1/64	D Hub Lgth.	L Lgth. ±1/64	FD ±1/64	FW	G
3GT09A-19DP-016	1	16	0.602	0.572	0.1875	0.71	0.23	0.69	0.71	0.40	0.12
3GT09A-19DP-017	1	17	0.639	0.609	0.1875	0.74	0.23	0.69	0.74	0.40	0.12
3GT09A-24DP-018	2	18	0.677	0.647	0.250	0.44	0.30	0.81	0.79	0.40	0.15
3GT09A-24DP-019	2	19	0.714	0.684	0.250	0.47	0.30	0.81	0.82	0.40	0.15
3GT09A-24DP-020	2	20	0.752	0.722	0.250	0.50	0.30	0.81	0.90	0.40	0.15
3GT09A-24DP-021	2	21	0.790	0.760	0.250	0.50	0.30	0.81	0.90	0.40	0.15
3GT09A-24DP-022	2	22	0.827	0.797	0.250	0.56	0.30	0.81	0.95	0.40	0.15
3GT09A-24DP-024	2	24	0.902	0.872	0.250	0.63	0.30	0.81	1.03	0.40	0.15
3GT09A-24DP-025	2	25	0.940	0.910	0.250	0.63	0.30	0.81	1.06	0.40	0.15
3GT09A-24DP-026	2	26	0.977	0.947	0.250	0.63	0.30	0.81	1.11	0.40	0.15
3GT09A-24DP-028	2	28	1.053	1.023	0.250	0.70	0.31	0.84	1.17	0.40	0.16
3GT09A-24DP-030	2	30	1.128	1.098	0.250	0.78	0.31	0.84	1.25	0.40	0.16
3GT09A-24DP-032	2	32	1.203	1.173	0.250	0.85	0.31	0.84	1.32	0.40	0.16
3GT09A-24DP-034	2	34	1.278	1.248	0.250	0.92	0.31	0.84	1.40	0.40	0.16
3GT09A-24NP-034	3	34	1.278	1.248	0.250	0.92	0.31	0.84	---	0.53	0.16
3GT09A-24DP-036	2	36	1.353	1.323	0.250	1.00	0.31	0.84	1.47	0.40	0.16
3GT09A-24NP-036	3	36	1.353	1.323	0.250	1.00	0.31	0.84	---	0.53	0.16
3GT09A-24DP-038	2	38	1.429	1.399	0.250	1.08	0.31	0.84	1.55	0.40	0.16
3GT09A-24NP-038	3	38	1.429	1.399	0.250	1.08	0.31	0.84	---	0.53	0.16
3GT09A-24DP-040	2	40	1.504	1.474	0.250	1.15	0.31	0.84	1.63	0.40	0.16
3GT09A-24NP-040	3	40	1.504	1.474	0.250	1.15	0.31	0.84	---	0.53	0.16
3GT09A-24DP-044	2	44	1.654	1.624	0.250	1.30	0.31	0.84	1.78	0.40	0.16
3GT09A-24NP-044	3	44	1.654	1.624	0.250	1.30	0.31	0.84	---	0.53	0.16
3GT09A-24DP-045	2	45	1.692	1.662	0.250	1.30	0.31	0.84	1.78	0.40	0.16
3GT09A-27NP-045	3	45	1.692	1.662	0.3125	1.25	0.38	0.88	---	0.50	0.19
3GT09A-27NP-048	3	48	1.805	1.775	0.3125	1.25	0.38	0.88	---	0.50	0.19
3GT09A-27NP-050	3	50	1.880	1.850	0.3125	1.25	0.38	0.88	---	0.50	0.19
3GT09A-27NP-056	3	56	2.105	2.075	0.3125	1.25	0.38	0.88	---	0.50	0.19
3GT09A-27NP-060	3	60	2.256	2.226	0.3125	1.25	0.38	0.88	---	0.50	0.19
3GT09A-27NP-062	3	62	2.331	2.301	0.3125	1.25	0.38	0.88	---	0.50	0.19
3GT09A-27NP-068	3	68	2.557	2.527	0.3125	1.25	0.38	0.88	---	0.50	0.19
3GT09A-27NP-072	3	72	2.707	2.677	0.3125	1.25	0.38	0.88	---	0.50	0.19
3GT09A-27NP-080	3	80	3.008	2.978	0.3125	1.25	0.38	0.88	---	0.50	0.19

5GT

TIMING

5GT

GT®2 Pulleys

5mm Pitch (.1968 inch) -- For 15mm Wide Belts



.1969 Circular Pitch

Materials

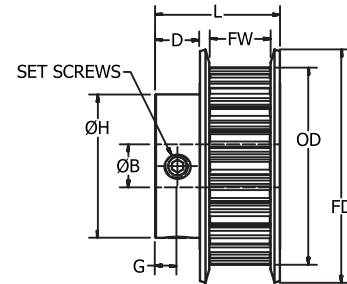
Aluminum

Finish: Clear Anodize

Double Flange

2 set screws @ 90°

(12 & 13 groove pulleys
have 1 set screw)



Use 5GT09 series belts

Part Number	No. of Grooves	Pitch Dia.	O.D.	B Bore Ø +0.001	H Hub Ø ±1/64	D Hub Lgth.	L Lgth. ±1/64	FD ±1/64	FW	G
5GT09A-24DP-012	12	0.752	0.707	0.250	0.44	0.25	0.80	0.88	0.42	0.13
5GT09A-24DP-013	13	0.815	0.770	0.250	0.50	0.25	0.80	0.94	0.42	0.13
5GT09A-24DP-014	14	0.877	0.832	0.250	0.50	0.25	0.80	1.00	0.42	0.13
5GT09A-24DP-015	15	0.940	0.895	0.250	0.56	0.25	0.80	1.06	0.42	0.13
5GT09A-24DP-016	16	1.003	0.958	0.250	0.56	0.25	0.80	1.09	0.42	0.13
5GT09A-24DP-017	17	1.065	1.020	0.250	0.63	0.25	0.80	1.19	0.42	0.13
5GT09A-24DP-018	18	1.128	1.083	0.250	0.69	0.25	0.80	1.25	0.42	0.13
5GT09A-24DP-019	19	1.191	1.146	0.250	0.75	0.25	0.80	1.31	0.42	0.13
5GT09A-24DP-020	20	1.253	1.208	0.250	0.81	0.25	0.80	1.38	0.42	0.13
5GT09A-24DP-022	22	1.379	1.334	0.250	0.94	0.25	0.80	1.50	0.42	0.13
5GT09A-31DP-024	24	1.504	1.459	0.375	1.00	0.38	0.92	1.63	0.42	0.19
5GT09A-31DP-025	25	1.566	1.521	0.375	1.00	0.38	0.92	1.69	0.42	0.19
5GT09A-31DP-026	26	1.629	1.584	0.375	1.06	0.38	0.92	1.75	0.42	0.19
5GT09A-36DP-028	28	1.754	1.709	0.500	1.19	0.50	1.05	1.88	0.42	0.25
5GT09A-36DP-030	30	1.880	1.835	0.500	1.19	0.50	1.05	2.00	0.42	0.25
5GT09A-36DP-032	32	2.005	1.960	0.500	1.25	0.50	1.05	2.13	0.42	0.25
5GT09A-36DP-034	34	2.130	2.085	0.500	1.38	0.50	1.05	2.25	0.42	0.25

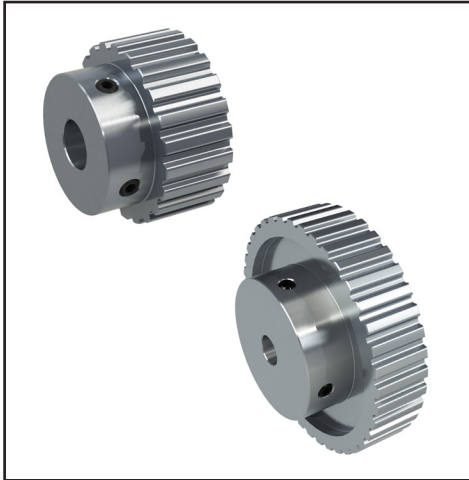
5GT

TIMING

GT®2 Pulleys

5mm Pitch (.1968 inch) -- For 9mm Wide Belts

5GT



.1969 Circular Pitch

Materials

Aluminum

Finish: Clear Anodize

No Flange

2 set screws @ 90°

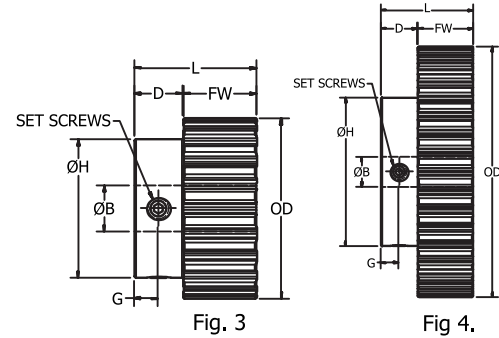
(12 & 13 groove pulleys
have 1 set screw)

Fig. 3

Fig. 4.

Use 5GT09 series belts

Part Number	Fig. No.	No. of Grooves	Pitch Dia.	O.D.	B Bore Ø +0.001	H Hub Ø ±1/64	D Hub Lgth.	L Lgth. ±1/64	FW	G
5GT09A-24NP-012	3	12	0.752	0.707	0.250	0.44	0.25	0.80	0.54	0.13
5GT09A-24NP-013	3	13	0.815	0.770	0.250	0.63	0.25	0.80	0.54	0.13
5GT09A-24NP-014	3	14	0.877	0.832	0.250	0.63	0.25	0.80	0.54	0.13
5GT09A-24NP-015	3	15	0.940	0.895	0.250	0.63	0.25	0.80	0.54	0.13
5GT09A-24NP-016	3	16	1.003	0.958	0.250	0.63	0.25	0.80	0.54	0.13
5GT09A-24NP-017	3	17	1.065	1.020	0.250	0.63	0.25	0.80	0.54	0.13
5GT09A-24NP-018	3	18	1.128	1.083	0.250	0.69	0.25	0.80	0.54	0.13
5GT09A-24NP-019	3	19	1.191	1.146	0.250	0.75	0.25	0.80	0.54	0.13
5GT09A-24NP-020	3	20	1.253	1.208	0.250	0.81	0.25	0.80	0.54	0.13
5GT09A-24NP-022	3	22	1.379	1.334	0.250	0.94	0.25	0.80	0.54	0.13
5GT09A-31NP-024	3	24	1.504	1.459	0.375	1.13	0.38	0.92	0.54	0.19
5GT09A-31NP-025	3	25	1.566	1.521	0.375	1.13	0.38	0.92	0.54	0.19
5GT09A-31NP-026	3	26	1.629	1.584	0.375	1.13	0.38	0.92	0.54	0.19
5GT09A-36NP-028	3	28	1.754	1.709	0.500	1.50	0.50	1.05	0.54	0.25
5GT09A-36NP-030	3	30	1.880	1.835	0.500	1.50	0.50	1.05	0.54	0.25
5GT09A-36NP-032	3	32	2.005	1.960	0.500	1.50	0.50	1.05	0.54	0.25
5GT09A-36NP-034	3	34	2.130	2.085	0.500	1.50	0.50	1.05	0.54	0.25
5GT09A-36NP-036	3	36	2.256	2.211	0.500	1.50	0.50	1.05	0.54	0.25
5GT09A-36NP-038	3	38	2.381	2.336	0.500	1.50	0.50	1.05	0.54	0.25
5GT09A-36NP-040	3	40	2.506	2.461	0.500	1.50	0.50	1.05	0.54	0.25
5GT09A-36NP-044	4	44	2.757	2.712	0.500	1.50	0.50	1.05	0.54	0.25
5GT09A-36NP-048	4	48	3.008	2.963	0.500	1.50	0.50	1.05	0.54	0.25
5GT09A-36NP-050	4	50	3.133	3.088	0.500	1.50	0.50	1.05	0.54	0.25
5GT09A-36NP-056	4	56	3.509	3.464	0.500	1.50	0.50	1.05	0.54	0.25
5GT09A-36NP-060	4	60	3.760	3.715	0.500	1.50	0.50	1.05	0.54	0.25
5GT09A-36NP-062	4	62	3.885	3.840	0.500	1.50	0.50	1.05	0.54	0.25
5GT09A-36NP-070	4	70	4.386	4.341	0.500	1.50	0.50	1.05	0.54	0.25
5GT09A-36NP-072	4	72	4.511	4.466	0.500	1.50	0.50	1.05	0.54	0.25

5GT

TIMING

GT®2 Pulleys

5mm Pitch (.1968 inch) -- For 15mm Wide Belts

5GT



.1969 Circular Pitch

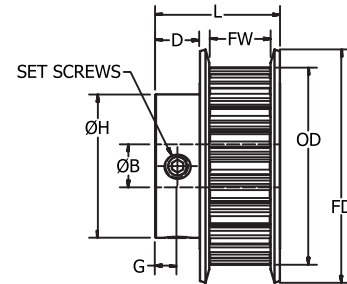
Materials

Aluminum

Finish: Clear Anodize

Double Flange

2 set screws @ 90°

(12 & 13 groove pulleys
have 1 set screw)

Use 5GT15 series belts

Part Number	No. of Grooves	Pitch Dia.	O.D.	B Bore Ø +0.001	H Hub Ø ±1/64	D Hub Lgth.	L Lgth. ±1/64	FD ±1/64	FW	G
5GT15A-24DP-012	12	0.752	0.707	0.250	0.44	0.25	1.03	0.88	0.65	0.13
5GT15A-24DP-013	13	0.815	0.770	0.250	0.50	0.25	1.03	0.94	0.65	0.13
5GT15A-24DP-014	14	0.877	0.832	0.250	0.50	0.25	1.03	1.00	0.65	0.13
5GT15A-24DP-015	15	0.940	0.895	0.250	0.56	0.25	1.03	1.06	0.65	0.13
5GT15A-24DP-016	16	1.003	0.958	0.250	0.56	0.25	1.03	1.09	0.65	0.13
5GT15A-24DP-017	17	1.065	1.020	0.250	0.63	0.25	1.03	1.19	0.65	0.13
5GT15A-24DP-018	18	1.128	1.083	0.250	0.69	0.25	1.03	1.25	0.65	0.13
5GT15A-24DP-019	19	1.191	1.146	0.250	0.75	0.25	1.03	1.31	0.65	0.13
5GT15A-24DP-020	20	1.253	1.208	0.250	0.81	0.25	1.03	1.38	0.65	0.13
5GT15A-24DP-022	22	1.379	1.334	0.250	0.94	0.25	1.03	1.50	0.65	0.13
5GT15A-31DP-024	24	1.504	1.459	0.375	1.00	0.38	1.16	1.63	0.65	0.19
5GT15A-31DP-025	25	1.566	1.521	0.375	1.00	0.38	1.16	1.69	0.65	0.19
5GT15A-31DP-026	26	1.629	1.584	0.375	1.06	0.38	1.16	1.75	0.65	0.19
5GT15A-36DP-028	28	1.754	1.709	0.500	1.19	0.50	1.28	1.88	0.65	0.25
5GT15A-36DP-030	30	1.880	1.835	0.500	1.19	0.50	1.28	2.00	0.65	0.25
5GT15A-36DP-032	32	2.005	1.960	0.500	1.25	0.50	1.28	2.13	0.65	0.25
5GT15A-36DP-034	34	2.130	2.085	0.500	1.38	0.50	1.28	2.25	0.65	0.25

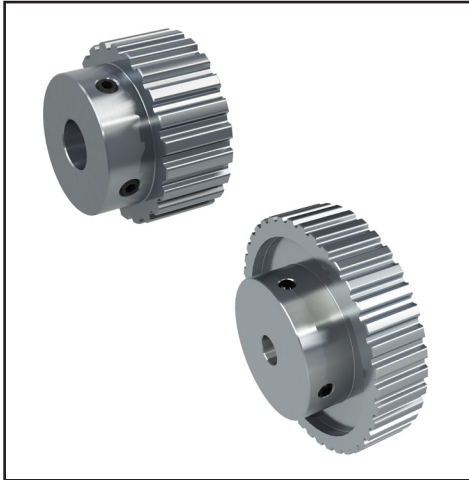
5GT

TIMING

GT®2 Pulleys

5mm Pitch (.1968 inch) -- For 15mm Wide Belts

5GT



.1969 Circular Pitch

Materials

Aluminum

Finish: Clear Anodize

No Flange

2 set screws @ 90°

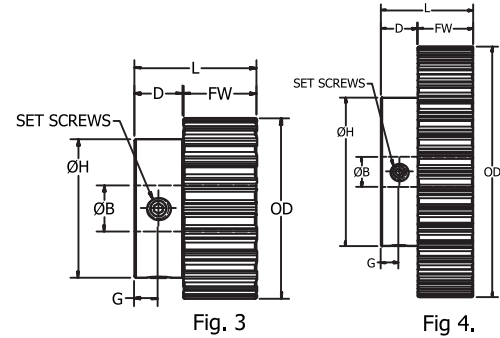
(12 & 13 groove pulleys
have 1 set screw)

Fig. 3

Fig. 4.

Use 5GT15 series belts

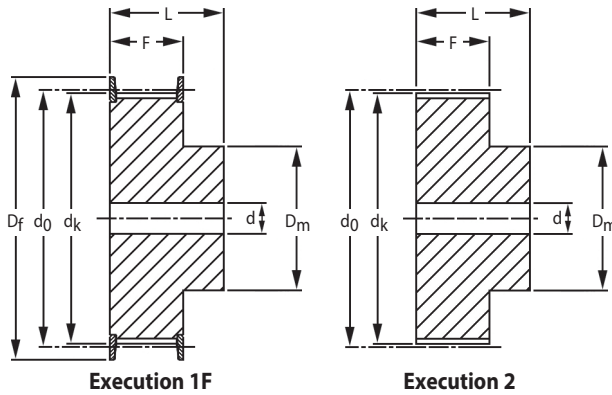
Part Number	Fig. No.	No. of Grooves	Pitch Dia.	O.D.	B Bore Ø +0.001	H Hub Ø ±1/64	D Hub Lgth.	L Lgth. ±1/64	FW	G
5GT15A-24NP-012	3	12	0.752	0.707	0.250	0.44	0.25	1.03	0.78	0.13
5GT15A-24NP-013	3	13	0.815	0.770	0.250	0.63	0.25	1.03	0.78	0.13
5GT15A-24NP-014	3	14	0.877	0.832	0.250	0.63	0.25	1.03	0.78	0.13
5GT15A-24NP-015	3	15	0.940	0.895	0.250	0.63	0.25	1.03	0.78	0.13
5GT15A-24NP-016	3	16	1.003	0.958	0.250	0.63	0.25	1.03	0.78	0.13
5GT15A-24NP-017	3	17	1.065	1.020	0.250	0.63	0.25	1.03	0.78	0.13
5GT15A-24NP-018	3	18	1.128	1.083	0.250	0.69	0.25	1.03	0.78	0.13
5GT15A-24NP-019	3	19	1.191	1.146	0.250	0.75	0.25	1.03	0.78	0.13
5GT15A-24NP-020	3	20	1.253	1.208	0.250	0.81	0.25	1.03	0.78	0.13
5GT15A-24NP-022	3	22	1.379	1.334	0.250	0.94	0.25	1.03	0.78	0.13
5GT15A-31NP-024	3	24	1.504	1.459	0.375	1.13	0.38	1.16	0.78	0.19
5GT15A-31NP-025	3	25	1.566	1.521	0.375	1.13	0.38	1.16	0.78	0.19
5GT15A-31NP-026	3	26	1.629	1.584	0.375	1.13	0.38	1.16	0.78	0.19
5GT15A-36NP-028	3	28	1.754	1.709	0.500	1.50	0.50	1.28	0.78	0.25
5GT15A-36NP-030	3	30	1.880	1.835	0.500	1.50	0.50	1.28	0.78	0.25
5GT15A-36NP-032	3	32	2.005	1.960	0.500	1.50	0.50	1.28	0.78	0.25
5GT15A-36NP-034	3	34	2.130	2.085	0.500	1.50	0.50	1.28	0.78	0.25
5GT15A-36NP-036	3	36	2.256	2.211	0.500	1.50	0.50	1.28	0.78	0.25
5GT15A-36NP-038	3	38	2.381	2.336	0.500	1.50	0.50	1.28	0.78	0.25
5GT15A-36NP-040	3	40	2.506	2.461	0.500	1.50	0.50	1.28	0.78	0.25
5GT15A-36NP-044	4	44	2.757	2.712	0.500	1.50	0.50	1.28	0.78	0.25
5GT15A-36NP-048	4	48	3.008	2.963	0.500	1.50	0.50	1.28	0.78	0.25
5GT15A-36NP-050	4	50	3.133	3.088	0.500	1.50	0.50	1.28	0.78	0.25
5GT15A-36NP-056	4	56	3.509	3.464	0.500	1.50	0.50	1.28	0.78	0.25
5GT15A-36NP-060	4	60	3.760	3.715	0.500	1.50	0.50	1.28	0.78	0.25
5GT15A-36NP-062	4	62	3.885	3.840	0.500	1.50	0.50	1.28	0.78	0.25
5GT15A-36NP-070	4	70	4.386	4.341	0.500	1.50	0.50	1.28	0.78	0.25
5GT15A-36NP-072	4	72	4.511	4.466	0.500	1.50	0.50	1.28	0.78	0.25

PULLEYS & BELTS

Synchronous High Torque Timing Pulleys

5mm Pitch - To Suit 10mm Wide Belts

AT5



Part Number	Type	No. of Teeth	PCD d_0	Tip Dia. d_k	Flange Dia. D_f	Hub Dia. D_m	Face Width F	Overall Width L	Bore d	No. of Flanges
21AT5/12-2	1F	12	19.10	17.90	23.00	11	15	21	*	2
21AT5/14-2	1F	14	22.28	21.10	25.00	13	15	21	*	2
21AT5/15-2	1F	15	23.87	22.65	28.00	16	15	21	6	2
21AT5/16-2	1F	16	25.46	24.24	32.00	18	15	21	6	2
21AT5/18-2	1F	18	28.65	27.43	32.00	20	15	21	6	2
21AT5/19-2	1F	19	30.24	29.02	36.00	22	15	21	6	2
21AT5/20-2	1F	20	31.83	30.61	36.00	23	15	21	6	2
21AT5/22-2	1F	22	35.01	33.79	38.00	24	15	21	6	2
21AT5/24-2	1F	24	38.20	36.98	42.00	26	15	21	6	2
21AT5/25-2	1F	25	39.79	38.57	44.00	26	15	21	6	2
21AT5/26-2	1F	26	41.38	40.16	44.00	26	15	21	6	2
21AT5/27-2	1F	27	42.97	41.75	48.00	30	15	21	8	2
21AT5/28-2	1F	28	44.56	43.34	48.00	32	15	21	8	2
21AT5/30-2	1F	30	47.75	46.53	51.00	34	15	21	8	2
21AT5/32-2	1F	32	50.93	49.71	54.00	38	15	21	8	2
21AT5/36-2	1F	36	57.30	56.08	64.00	38	15	21	8	2
21AT5/40-2	1F	40	63.66	62.44	66.50	40	15	21	8	2
21AT5/42-2	1F	42	66.85	65.63	70.00	40	15	21	8	2
21AT5/44-0	2	44	70.03	68.81	-	45	15	21	8	0
21AT5/48-0	2	48	76.39	75.17	-	50	15	21	8	0
21AT5/60-0	2	60	95.49	94.27	-	65	15	21	8	0

Material

Aluminium with Zinc plated steel flanges.
* Centre drilled or pilot bored.

Other Info.

All dimensions subject to change.
If a dimension is critical to your application, please contact Sales for confirmation.

✉ sales@ondrives.us
🌐 www.ondrives.us

☎ 516-771-6777
📠 516-771-6444

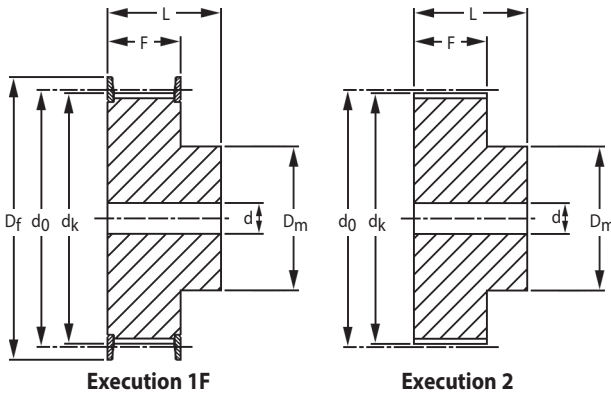
ondrives.US Corp.

AT5

PULLEYS & BELTS

Synchronous High Torque Timing Pulleys

5mm Pitch - To Suit 16mm Wide Belts

**Execution 1F****Execution 2**

Part Number	Type	No. of Teeth	PCD d_0	Tip Dia. d_k	Flange Dia. D_f	Hub Dia. D_m	Face Width F	Overall Width L	Bore d	No. of Flanges
27AT5/12-2	1F	12	19.10	17.90	23.00	11	21	27	*	2
27AT5/14-2	1F	14	22.28	21.10	25.00	13	21	27	*	2
27AT5/15-2	1F	15	23.87	22.65	28.00	16	21	27	6	2
27AT5/16-2	1F	16	25.46	24.24	32.00	18	21	27	6	2
27AT5/18-2	1F	18	28.65	27.43	32.00	20	21	27	6	2
27AT5/19-2	1F	19	30.24	29.02	36.00	22	21	27	6	2
27AT5/20-2	1F	20	31.83	30.61	36.00	23	21	27	6	2
27AT5/22-2	1F	22	35.01	33.79	38.00	24	21	27	6	2
27AT5/24-2	1F	24	38.20	36.98	42.00	26	21	27	6	2
27AT5/25-2	1F	25	39.79	38.57	44.00	26	21	27	6	2
27AT5/26-2	1F	26	41.38	40.16	44.00	26	21	27	6	2
27AT5/27-2	1F	27	42.97	41.75	48.00	30	21	27	8	2
27AT5/28-2	1F	28	44.56	43.34	48.00	32	21	27	8	2
27AT5/30-2	1F	30	47.75	46.53	51.00	34	21	27	8	2
27AT5/32-2	1F	32	50.93	49.71	54.00	38	21	27	8	2
27AT5/36-2	1F	36	57.30	56.08	64.00	38	21	27	8	2
27AT5/40-2	1F	40	63.66	62.44	66.50	40	21	27	8	2
27AT5/42-2	1F	42	66.85	65.63	70.00	40	21	27	8	2
27AT5/44-0	2	44	70.03	68.81	-	45	21	27	8	0
27AT5/48-0	2	48	76.39	75.17	-	50	21	27	8	0
27AT5/60-0	2	60	95.49	94.27	-	65	21	27	8	0

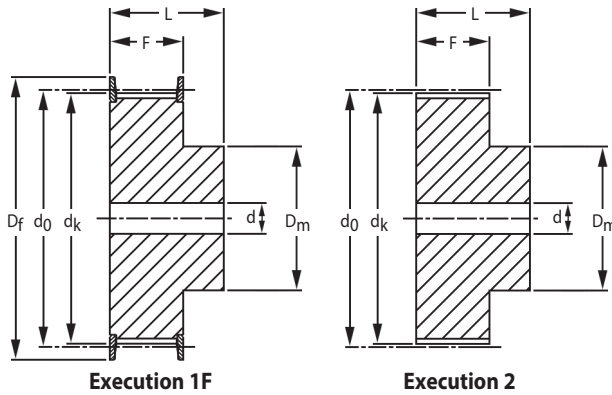
MaterialAluminium with Zinc plated steel flanges.
* Centre drilled or pilot bored.**Other Info.**All dimensions subject to change.
If a dimension is critical to your application, please contact Sales for confirmation.**ondrives**.US Corp.☎ 516-771-6777
📠 516-771-6444📧 sales@ondrives.us
🌐 www.ondrives.us

PULLEYS & BELTS

Synchronous High Torque Timing Pulleys

5mm Pitch - To Suit 25mm Wide Belts

AT5



Part Number	Type	No. of Teeth	PCD d_p	Tip Dia. d_k	Flange Dia. D_f	Hub Dia. D_m	Face Width F	Overall Width L	Bore d	No. of Flanges
36AT5/12-2	1F	12	19.10	17.90	23.00	11	30	36	*	2
36AT5/14-2	1F	14	22.28	21.10	25.00	13	30	36	*	2
36AT5/15-2	1F	15	23.87	22.65	28.00	16	30	36	6	2
36AT5/16-2	1F	16	25.46	24.24	32.00	18	30	36	6	2
36AT5/18-2	1F	18	28.65	27.43	32.00	20	30	36	6	2
36AT5/19-2	1F	19	30.24	29.02	36.00	22	30	36	6	2
36AT5/20-2	1F	20	31.83	30.61	36.00	23	30	36	6	2
36AT5/22-2	1F	22	35.01	33.79	38.00	24	30	36	6	2
36AT5/24-2	1F	24	38.20	36.98	42.00	26	30	36	6	2
36AT5/25-2	1F	25	39.79	38.57	44.00	26	30	36	6	2
36AT5/26-2	1F	26	41.38	40.16	44.00	26	30	36	6	2
36AT5/27-2	1F	27	42.97	41.75	48.00	30	30	36	8	2
36AT5/28-2	1F	28	44.56	43.34	48.00	32	30	36	8	2
36AT5/30-2	1F	30	47.75	46.53	51.00	34	30	36	8	2
36AT5/32-2	1F	32	50.93	49.71	54.00	38	30	36	8	2
36AT5/36-2	1F	36	57.30	56.08	64.00	38	30	36	8	2
36AT5/40-2	1F	40	63.66	62.44	66.50	40	30	36	8	2
36AT5/42-2	1F	42	66.85	65.63	70.00	40	30	36	8	2
36AT5/44-0	2	44	70.03	68.81	-	45	30	36	8	0
36AT5/48-0	2	48	76.39	75.17	-	50	30	36	8	0
36AT5/60-0	2	60	95.49	94.27	-	65	30	36	8	0

Material

Aluminium with Zinc plated steel flanges.
* Centre drilled or pilot bored.

Other Info.

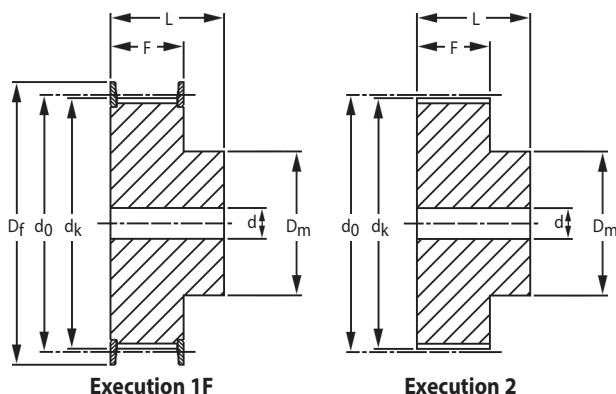
All dimensions subject to change.
If a dimension is critical to your application, please contact Sales for confirmation.

AT10

PULLEYS & BELTS

Synchronous High Torque Timing Pulleys

10mm Pitch - To Suit 16mm Wide Belts

**Execution 1F****Execution 2**

Part Number	Type	No. of Teeth	PCD d_0	Tip Dia. d_k	Flange Dia. D_f	Hub Dia. D_m	Face Width F	Overall Width L	Bore d	No. of Flanges
31AT10/15-2	1F	15	47.75	45.98	51.00	32	21	31	8	2
31AT10/16-2	1F	16	50.93	49.10	54.00	35	21	31	8	2
31AT10/18-2	1F	18	57.30	55.45	60.00	40	21	31	8	2
31AT10/19-2	1F	19	60.48	58.65	66.50	44	21	31	8	2
31AT10/20-2	1F	20	63.66	61.80	66.50	46	21	31	8	2
31AT10/22-2	1F	22	70.03	68.20	75.00	52	21	31	8	2
31AT10/24-2	1F	24	76.39	74.55	83.00	58	21	31	8	2
31AT10/25-2	1F	25	79.58	77.75	83.00	60	21	31	8	2
31AT10/26-2	1F	26	82.76	80.90	87.00	60	21	31	8	2
31AT10/27-2	1F	27	85.94	84.10	91.00	60	21	31	8	2
31AT10/28-2	1F	28	89.13	87.30	93.00	60	21	31	8	2
31AT10/30-2	1F	30	95.49	93.65	97.00	60	21	31	8	2
31AT10/32-2	1F	32	101.86	100.00	106.00	65	21	31	10	2
31AT10/36-2	1F	36	114.59	112.75	119.00	70	21	31	10	2
31AT10/40-2	1F	40	127.32	125.50	131.00	80	21	31	10	2
31AT10/44-0	2	44	140.06	138.20	-	88	21	31	10	0
31AT10/48-0	2	48	152.79	150.95	-	95	21	31	16	0
31AT10/60-0	2	60	190.99	189.15	-	110	21	31	16	0

Material

Aluminium with Zinc plated steel flanges.

Other Info.

All dimensions subject to change.

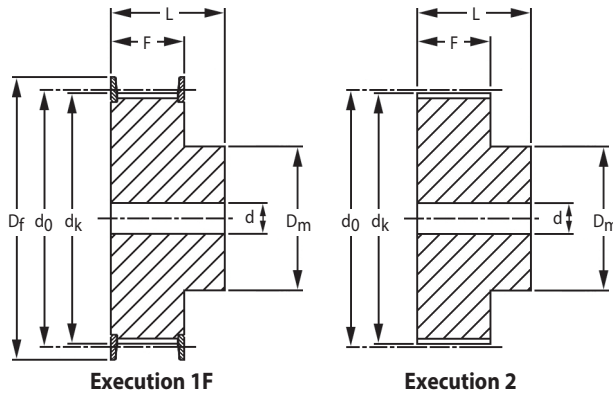
If a dimension is critical to your application, please contact Sales for confirmation.

PULLEYS & BELTS

Synchronous High Torque Timing Pulleys

10mm Pitch - To Suit 25mm Wide Belts

AT10



Execution 1F

Execution 2

Part Number	Type	No. of Teeth	PCD d_0	Tip Dia. d_k	Flange Dia. D_f	Hub Dia. D_m	Face Width F	Overall Width L	Bore d	No. of Flanges
40AT10/15-2	1F	15	47.75	45.98	51.00	32	30	40	8	2
40AT10/16-2	1F	16	50.93	49.10	54.00	35	30	40	8	2
40AT10/18-2	1F	18	57.30	55.45	60.00	40	30	40	8	2
40AT10/19-2	1F	19	60.48	58.65	66.50	44	30	40	8	2
40AT10/20-2	1F	20	63.66	61.80	66.50	46	30	40	8	2
40AT10/22-2	1F	22	70.03	68.20	75.00	52	30	40	8	2
40AT10/24-2	1F	24	76.39	74.55	83.00	58	30	40	8	2
40AT10/25-2	1F	25	79.58	77.75	83.00	60	30	40	8	2
40AT10/26-2	1F	26	82.76	80.90	87.00	60	30	40	8	2
40AT10/27-2	1F	27	85.94	84.10	91.00	60	30	40	8	2
40AT10/28-2	1F	28	89.13	87.30	93.00	60	30	40	8	2
40AT10/30-2	1F	30	95.49	93.65	97.00	60	30	40	8	2
40AT10/32-2	1F	32	101.86	100.00	106.00	65	30	40	10	2
40AT10/36-2	1F	36	114.59	112.75	119.00	70	30	40	10	2
40AT10/40-2	1F	40	127.32	125.50	131.00	80	30	40	10	2
40AT10/44-0	2	44	140.06	138.20	-	88	30	40	10	0
40AT10/48-0	2	48	152.79	150.95	-	95	30	40	16	0
40AT10/60-0	2	60	190.99	189.15	-	110	30	40	16	0

Material

Aluminium with Zinc plated steel flanges.

Other Info.

All dimensions subject to change.

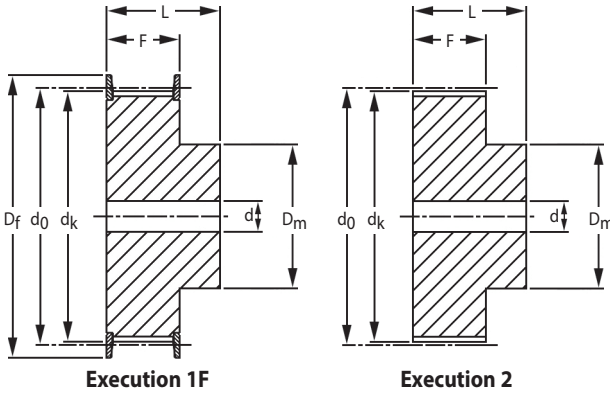
If a dimension is critical to your application, please contact Sales for confirmation.

AT10

PULLEYS & BELTS

Synchronous High Torque Timing Pulleys

10mm Pitch - To Suit 32mm Wide Belts

**Execution 1F****Execution 2**

Part Number	Type	No. of Teeth	PCD d_0	Tip Dia. d_k	Flange Dia. D_f	Hub Dia. D_m	Face Width F	Overall Width L	Bore d	No. of Flanges
47AT10/18-2	1F	18	57.30	55.45	60.00	40	37	47	10	2
47AT10/19-2	1F	19	60.48	58.65	66.50	44	37	47	10	2
47AT10/20-2	1F	20	63.66	61.80	66.50	46	37	47	12	2
47AT10/22-2	1F	22	70.03	68.20	75.00	52	37	47	12	2
47AT10/24-2	1F	24	76.39	74.55	83.00	58	37	47	12	2
47AT10/25-2	1F	25	79.58	77.75	83.00	60	37	47	12	2
47AT10/26-2	1F	26	82.76	80.90	87.00	60	37	47	12	2
47AT10/27-2	1F	27	85.94	84.10	91.00	60	37	47	12	2
47AT10/28-2	1F	28	89.13	87.30	93.00	60	37	47	12	2
47AT10/30-2	1F	30	95.49	93.65	97.00	60	37	47	12	2
47AT10/32-2	1F	32	101.86	100.00	106.00	65	37	47	12	2
47AT10/36-2	1F	36	114.59	112.75	119.00	70	37	47	16	2
47AT10/40-2	1F	40	127.32	125.50	131.00	80	37	47	16	2
47AT10/44-0	2	44	140.06	138.20	-	88	37	47	16	0
47AT10/48-0	2	48	152.79	150.95	-	95	37	47	16	0
47AT10/60-0	2	60	190.99	189.15	-	110	37	47	16	0

Material

Aluminium with Zinc plated steel flanges.

Other Info.

All dimensions subject to change.

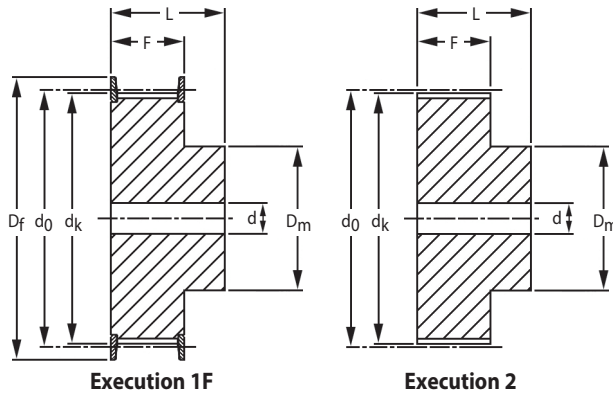
If a dimension is critical to your application, please contact Sales for confirmation.

PULLEYS & BELTS

Synchronous High Torque Timing Pulleys

10mm Pitch - To Suit 50mm Wide Belts

AT10



Part Number	Type	No. of Teeth	PCD d_0	Tip Dia. d_k	Flange Dia. D_f	Hub Dia. D_m	Face Width F	Overall Width L	Bore d	No. of Flanges
66AT10/18-2	1F	18	57.30	55.45	60.00	40	56	66	10	2
66AT10/19-2	1F	19	60.48	58.65	66.50	44	56	66	10	2
66AT10/20-2	1F	20	63.66	61.80	66.50	46	56	66	12	2
66AT10/22-2	1F	22	70.03	68.20	75.00	52	56	66	12	2
66AT10/24-2	1F	24	76.39	74.55	83.00	58	56	66	12	2
66AT10/25-2	1F	25	79.58	77.75	83.00	60	56	66	12	2
66AT10/26-2	1F	26	82.76	80.90	87.00	60	56	66	12	2
66AT10/27-2	1F	27	85.94	84.10	91.00	60	56	66	12	2
66AT10/28-2	1F	28	89.13	87.30	93.00	60	56	66	12	2
66AT10/30-2	1F	30	95.49	93.65	97.00	60	56	66	12	2
66AT10/32-2	1F	32	101.86	100.00	106.00	65	56	66	12	2
66AT10/36-2	1F	36	114.59	112.75	119.00	70	56	66	16	2
66AT10/40-2	1F	40	127.32	125.50	131.00	80	56	66	16	2
66AT10/44-0	2	44	140.06	138.20	-	88	56	66	16	0
66AT10/48-0	2	48	152.79	150.95	-	95	56	66	16	0
66AT10/60-0	2	60	190.99	189.15	-	110	56	66	16	0

Material

Aluminium with Zinc plated steel flanges.

Other Info.

All dimensions subject to change.

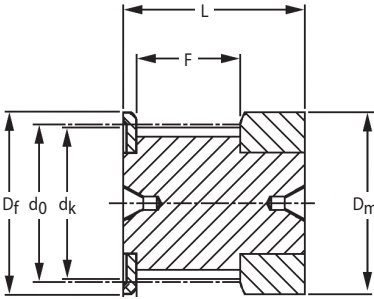
If a dimension is critical to your application, please contact Sales for confirmation.

T2.5

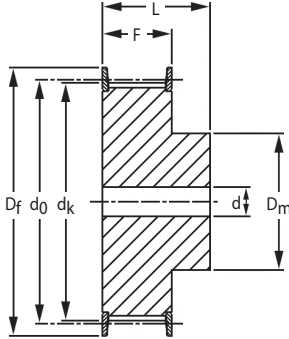
PULLEYS & BELTS

Synchronous Timing Pulleys

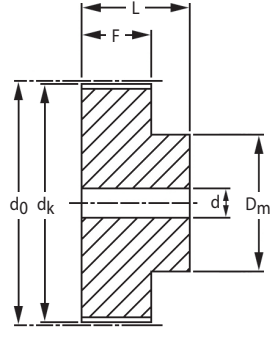
2.5mm Pitch - To Suit 6mm Wide Belts



Execution 0F



Execution 1F



Execution 2

Part Number	Type	No. of Teeth	PCD d_0	Tip Dia. d_k	Flange Dia. D_f	Hub Dia. D_m	Face Width F	Overall Width L	Bore d	No. of Flanges
16T2.5/10-2	0F	10	7.96	7.45	13.0	13	9	16	*	2
16T2.5/12-2	0F	12	9.55	9.00	13.0	13	9	16	*	2
16T2.5/14-2	0F	14	11.14	10.60	15.0	15	9	16	*	2
16T2.5/15-2	0F	15	11.94	11.40	15.0	15	9	16	*	2
16T2.5/16-2	0F	16	12.73	12.20	16.0	16	9	16	*	2
16T2.5/18-2	1F	18	14.32	13.80	17.5	10	10	16	*	2
16T2.5/19-2	1F	19	15.12	14.60	20.0	10	10	16	*	2
16T2.5/20-2	1F	20	15.92	15.40	20.0	11	10	16	*	2
16T2.5/22-2	1F	22	17.51	17.00	22.0	11	10	16	*	2
16T2.5/24-2	1F	24	19.10	18.55	22.0	12	10	16	4	2
16T2.5/25-2	1F	25	19.89	19.35	25.0	13	10	16	4	2
16T2.5/26-2	1F	26	20.69	20.15	26.0	14	10	16	4	2
16T2.5/28-2	1F	28	22.28	21.75	26.0	14	10	16	4	2
16T2.5/30-2	1F	30	23.87	23.35	26.0	16	10	16	6	2
16T2.5/32-2	1F	32	25.46	24.95	32.0	16	10	16	6	2
16T2.5/36-2	1F	36	28.65	28.10	36.0	20	10	16	6	2
16T2.5/40-2	1F	40	31.83	31.30	38.0	22	10	16	6	2
16T2.5/44-0	2	44	35.01	34.50	-	24	10	16	6	0
16T2.5/48-0	2	48	38.20	37.70	-	26	10	16	6	0
16T2.5/60-0	2	60	47.75	47.25	-	34	10	16	8	0

Material

Aluminium with Zinc plated steel flanges.
* Centre drilled or pilot bored.

Other Info.

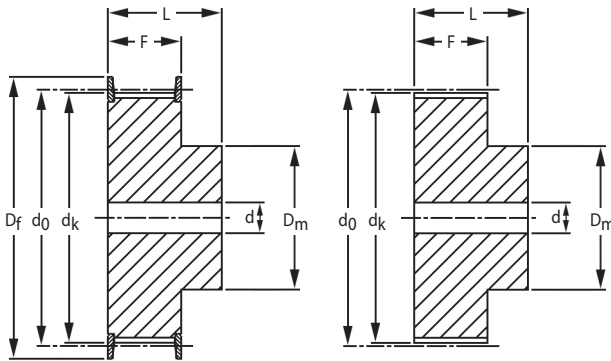
All dimensions subject to change.
If a dimension is critical to your application, please contact Sales for confirmation.

T5

PULLEYS & BELTS

Synchronous Timing Pulleys

5mm Pitch - To Suit 10mm Wide Belts

**Execution 1F****Execution 2**

Part Number	Type	No. of Teeth	PCD d_0	Tip Dia. d_k	Flange Dia. D_f	Hub Dia. D_m	Face Width F	Overall Width L	Bore d	No. of Flanges
21T5/10-2	1F	10	15.92	15.05	19.5	8	15	21	*	2
21T5/12-2	1F	12	19.10	18.25	23.0	11	15	21	*	2
21T5/14-2	1F	14	22.28	21.45	25.0	13	15	21	*	2
21T5/15-2	1F	15	23.87	23.05	28.0	16	15	21	6	2
21T5/16-2	1F	16	25.46	24.60	32.0	18	15	21	6	2
21T5/18-2	1F	18	28.65	27.80	32.0	20	15	21	6	2
21T5/19-2	1F	19	30.24	29.40	36.0	22	15	21	6	2
21T5/20-2	1F	20	31.83	31.00	36.0	23	15	21	6	2
21T5/22-2	1F	22	35.01	34.15	38.0	24	15	21	6	2
21T5/24-2	1F	24	38.20	37.40	42.0	26	15	21	6	2
21T5/25-2	1F	25	39.79	38.95	44.0	26	15	21	6	2
21T5/26-2	1F	26	41.38	40.60	44.0	26	15	21	6	2
21T5/27-2	1F	27	42.97	42.20	48.0	30	15	21	8	2
21T5/28-2	1F	28	44.56	43.75	48.0	32	15	21	8	2
21T5/30-2	1F	30	47.75	46.95	51.0	34	15	21	8	2
21T5/32-2	1F	32	50.93	50.10	54.0	38	15	21	8	2
21T5/36-2	1F	36	57.30	56.45	64.0	38	15	21	8	2
21T5/40-2	1F	40	63.66	62.85	66.5	40	15	21	8	2
21T5/42-2	1F	42	66.85	66.00	70.0	40	15	21	8	2
21T5/44-0	2	44	70.03	69.20	-	45	15	21	8	0
21T5/48-0	2	48	76.39	75.55	-	50	15	21	8	0
21T5/60-0	2	60	95.49	94.65	-	65	15	21	8	0

MaterialAluminium with Zinc plated steel flanges.
* Centre drilled or pilot bored.**Other Info.**

All dimensions subject to change.

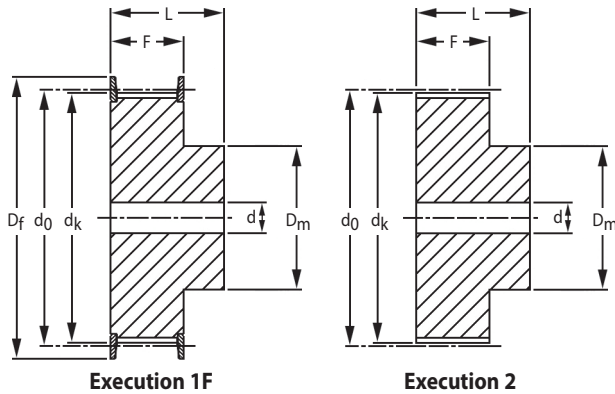
If a dimension is critical to your application, please contact Sales for confirmation.

PULLEYS & BELTS

Synchronous Timing Pulleys

5mm Pitch - To Suit 16mm Wide Belts

T5



Part Number	Type	No. of Teeth	PCD d_0	Tip Dia. d_k	Flange Dia. D_f	Hub Dia. D_m	Face Width F	Overall Width L	Bore d	No. of Flanges
27T5/10-2	1F	10	15.92	15.05	19.5	8	21	27	*	2
27T5/12-2	1F	12	19.10	18.25	23.0	11	21	27	*	2
27T5/14-2	1F	14	22.28	21.45	25.0	13	21	27	*	2
27T5/15-2	1F	15	23.87	23.05	28.0	16	21	27	6	2
27T5/16-2	1F	16	25.46	24.60	32.0	18	21	27	6	2
27T5/18-2	1F	18	28.65	27.80	32.0	20	21	27	6	2
27T5/19-2	1F	19	30.24	29.40	36.0	22	21	27	6	2
27T5/20-2	1F	20	31.83	31.00	36.0	23	21	27	6	2
27T5/22-2	1F	22	35.01	34.15	38.0	24	21	27	6	2
27T5/24-2	1F	24	38.20	37.40	42.0	26	21	27	6	2
27T5/25-2	1F	25	39.79	38.95	44.0	26	21	27	6	2
27T5/26-2	1F	26	41.38	40.60	44.0	26	21	27	6	2
27T5/27-2	1F	27	42.97	42.20	48.0	30	21	27	8	2
27T5/28-2	1F	28	44.56	43.75	48.0	32	21	27	8	2
27T5/30-2	1F	30	47.75	46.95	51.0	34	21	27	8	2
27T5/32-2	1F	32	50.93	50.10	54.0	38	21	27	8	2
27T5/36-2	1F	36	57.30	56.45	64.0	38	21	27	8	2
27T5/40-2	1F	40	63.66	62.85	66.5	40	21	27	8	2
27T5/42-2	1F	42	66.85	66.00	70.0	40	21	27	8	2
27T5/44-0	2	44	70.03	69.20	-	45	21	27	8	0
27T5/48-0	2	48	76.39	75.55	-	50	21	27	8	0
27T5/60-0	2	60	95.49	94.65	-	65	21	27	8	0

Material

Aluminium with Zinc plated steel flanges.
* Centre drilled or pilot bored.

Other Info.

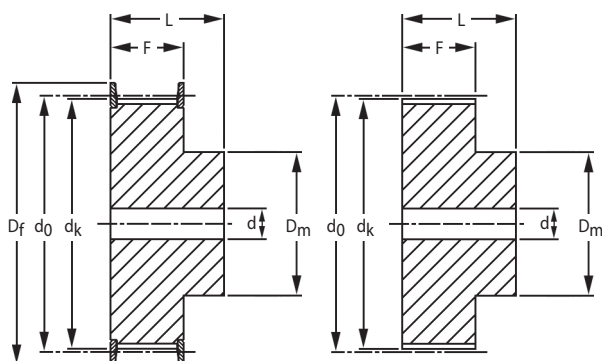
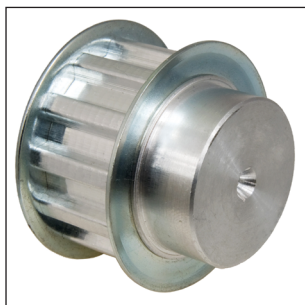
All dimensions subject to change.
If a dimension is critical to your application, please contact Sales for confirmation.

T5

PULLEYS & BELTS

Synchronous Timing Pulleys

5mm Pitch - To Suit 25mm Wide Belts



Execution 1F

Execution 2

Part Number	Type	No. of Teeth	PCD d_0	Tip Dia. d_k	Flange Dia. D_f	Hub Dia. D_m	Face Width F	Overall Width L	Bore d	No. of Flanges
36T5/10-2	1F	10	15.92	15.05	19.5	8	30	36	*	2
36T5/12-2	1F	12	19.10	18.25	23.0	11	30	36	*	2
36T5/14-2	1F	14	22.28	21.45	25.0	13	30	36	*	2
36T5/15-2	1F	15	23.87	23.05	28.0	16	30	36	6	2
36T5/16-2	1F	16	25.46	24.60	32.0	18	30	36	6	2
36T5/18-2	1F	18	28.65	27.80	32.0	20	30	36	6	2
36T5/19-2	1F	19	30.24	29.40	36.0	22	30	36	6	2
36T5/20-2	1F	20	31.83	31.00	36.0	23	30	36	6	2
36T5/22-2	1F	22	35.01	34.15	38.0	24	30	36	6	2
36T5/24-2	1F	24	38.20	37.40	42.0	26	30	36	8	2
36T5/25-2	1F	25	39.79	38.95	44.0	26	30	36	8	2
36T5/26-2	1F	26	41.38	40.60	44.0	26	30	36	8	2
36T5/27-2	1F	27	42.97	42.20	48.0	30	30	36	8	2
36T5/28-2	1F	28	44.56	43.75	48.0	32	30	36	8	2
36T5/30-2	1F	30	47.75	46.95	51.0	34	30	36	8	2
36T5/32-2	1F	32	50.93	50.10	54.0	38	30	36	8	2
36T5/36-2	1F	36	57.30	56.45	64.0	38	30	36	8	2
36T5/40-2	1F	40	63.66	62.85	66.5	40	30	36	8	2
36T5/42-2	1F	42	66.85	66.00	70.0	40	30	36	8	2
36T5/44-0	2	44	70.03	69.20	-	45	30	36	8	0
36T5/48-0	2	48	76.39	75.55	-	50	30	36	8	0
36T5/60-0	2	60	95.49	94.65	-	65	30	36	8	0

Material

Aluminium with Zinc plated steel flanges.
* Centre drilled or pilot bored.

Other Info.

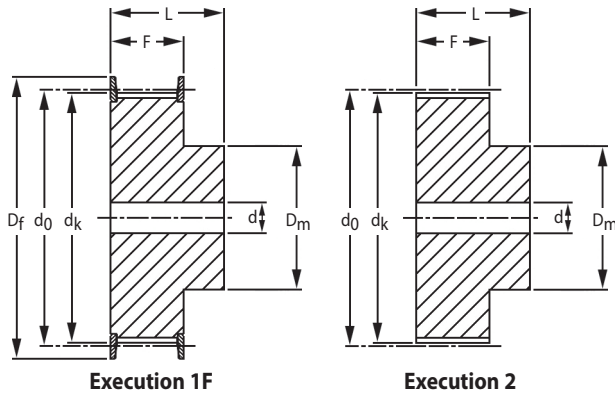
All dimensions subject to change.
If a dimension is critical to your application, please contact Sales for confirmation.

PULLEYS & BELTS

T10

Synchronous Timing Pulleys

10mm Pitch - To Suit 16mm Wide Belts



Execution 1F

Execution 2

Part Number	Type	No. of Teeth	PCD d_0	Tip Dia. d_k	Flange Dia. D_f	Hub Dia. D_m	Face Width F	Overall Width L	Bore d	No. of Flanges
31T10/12-2	1F	12	38.20	36.35	42	28	21	31	6	2
31T10/14-2	1F	14	44.56	42.70	48	32	21	31	8	2
31T10/15-2	1F	15	47.75	45.90	51	32	21	31	8	2
31T10/16-2	1F	16	50.93	49.10	54	35	21	31	8	2
31T10/18-2	1F	18	57.30	55.45	60	40	21	31	8	2
31T10/19-2	1F	19	60.48	58.65	66	44	21	31	8	2
31T10/20-2	1F	20	63.66	61.80	66	46	21	31	8	2
31T10/22-2	1F	22	70.03	68.20	75	52	21	31	8	2
31T10/24-2	1F	24	76.39	74.55	83	58	21	31	8	2
31T10/25-2	1F	25	79.58	77.75	83	60	21	31	8	2
31T10/26-2	1F	26	82.76	80.90	87	60	21	31	8	2
31T10/27-2	1F	27	85.94	84.10	91	60	21	31	8	2
31T10/28-2	1F	28	89.13	87.25	93	60	21	31	8	2
31T10/30-2	1F	30	95.49	93.65	97	60	21	31	8	2
31T10/32-2	1F	32	101.86	100.00	106	65	21	31	10	2
31T10/36-2	1F	36	114.59	112.75	119	70	21	31	10	2
31T10/40-2	1F	40	127.32	125.45	131	80	21	31	10	2
31T10/44-0	2	44	140.06	138.20	-	88	21	31	10	0
31T10/48-0	2	48	152.79	150.95	-	95	21	31	16	0
31T10/60-0	2	60	190.99	189.10	-	110	21	31	16	0

Material

Aluminium with Zinc plated steel flanges.

Other Info.

All dimensions subject to change.

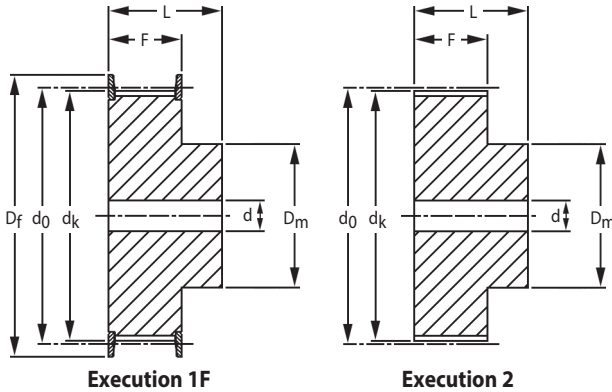
If a dimension is critical to your application, please contact Sales for confirmation.

T10

PULLEYS & BELTS

Synchronous Timing Pulleys

10mm Pitch - To Suit 25mm Wide Belts

**Execution 1F****Execution 2**

Part Number	Type	No. of Teeth	PCD d_0	Tip Dia. d_k	Flange Dia. D_f	Hub Dia. D_m	Face Width F	Overall Width L	Bore d	No. of Flanges
40T10/12-2	1F	12	38.20	36.35	42	28	30	40	6	2
40T10/14-2	1F	14	44.56	42.70	48	32	30	40	8	2
40T10/15-2	1F	15	47.75	45.90	51	32	30	40	8	2
40T10/16-2	1F	16	50.93	49.10	54	35	30	40	8	2
40T10/18-2	1F	18	57.30	55.45	60	40	30	40	8	2
40T10/19-2	1F	19	60.48	58.65	66	44	30	40	8	2
40T10/20-2	1F	20	63.66	61.80	66	46	30	40	8	2
40T10/22-2	1F	22	70.03	68.20	75	52	30	40	8	2
40T10/24-2	1F	24	76.39	74.55	83	58	30	40	8	2
40T10/25-2	1F	25	79.58	77.75	83	60	30	40	8	2
40T10/26-2	1F	26	82.76	80.90	87	60	30	40	8	2
40T10/27-2	1F	27	85.94	84.10	91	60	30	40	8	2
40T10/28-2	1F	28	89.13	87.25	93	60	30	40	8	2
40T10/30-2	1F	30	95.49	93.65	97	60	30	40	8	2
40T10/32-2	1F	32	101.86	100.00	106	65	30	40	10	2
40T10/36-2	1F	36	114.59	112.75	119	70	30	40	10	2
40T10/40-2	1F	40	127.32	125.45	131	80	30	40	10	2
40T10/44-0	2	44	140.06	138.20	-	88	30	40	10	0
40T10/48-0	2	48	152.79	150.95	-	95	30	40	16	0
40T10/60-0	2	60	190.99	189.10	-	110	30	40	16	0

Material

Aluminium with Zinc plated steel flanges.

Other Info.

All dimensions subject to change.

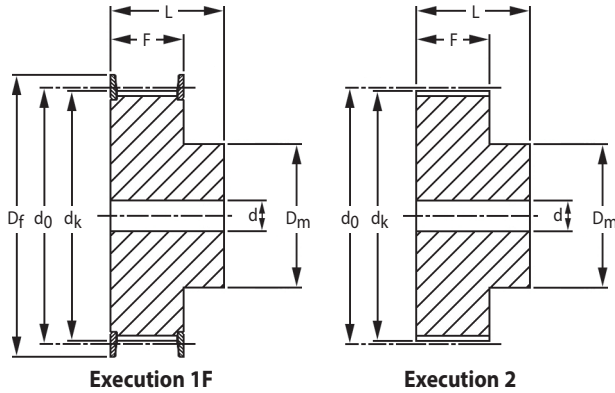
If a dimension is critical to your application, please contact Sales for confirmation.

PULLEYS & BELTS

T10

Synchronous Timing Pulleys

10mm Pitch - To Suit 32mm Wide Belts



Part Number	Type	No. of Teeth	PCD d_o	Tip Dia. d_k	Flange Dia. D_f	Hub Dia. D_m	Face Width F	Overall Width L	Bore d	No. of Flanges
47T10/18-2	1F	18	57.30	55.45	60	40	37	47	10	2
47T10/19-2	1F	19	60.48	58.60	66	44	37	47	10	2
47T10/20-2	1F	20	63.66	61.80	66	46	37	47	12	2
47T10/22-2	1F	22	70.03	68.20	75	52	37	47	12	2
47T10/24-2	1F	24	76.39	74.55	83	58	37	47	12	2
47T10/25-2	1F	25	79.58	77.75	83	60	37	47	12	2
47T10/26-2	1F	26	82.76	80.90	87	60	37	47	12	2
47T10/27-2	1F	27	85.94	84.10	91	60	37	47	12	2
47T10/28-2	1F	28	89.13	87.25	93	60	37	47	12	2
47T10/30-2	1F	30	95.49	93.65	97	60	37	47	12	2
47T10/32-2	1F	32	101.86	100.00	106	65	37	47	12	2
47T10/36-2	1F	36	114.59	112.75	119	70	37	47	16	2
47T10/40-2	1F	40	127.32	125.45	131	80	37	47	16	2
47T10/44-2	2	44	140.06	138.20	-	88	37	47	16	0
47T10/48-2	2	48	152.79	150.95	-	95	37	47	16	0
47T10/60-2	2	60	190.99	189.00	-	110	37	47	16	0

Material

Aluminium with Zinc plated steel flanges.

Other Info.

All dimensions subject to change.

If a dimension is critical to your application, please contact Sales for confirmation.