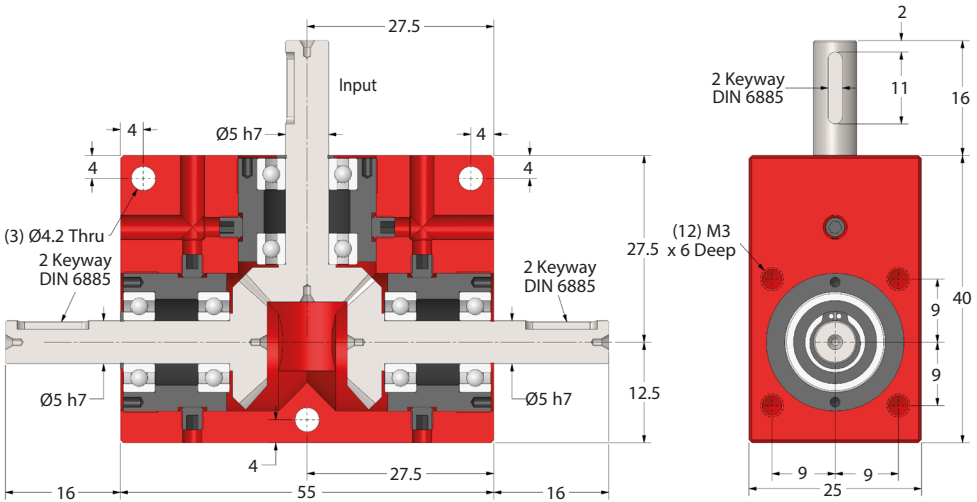
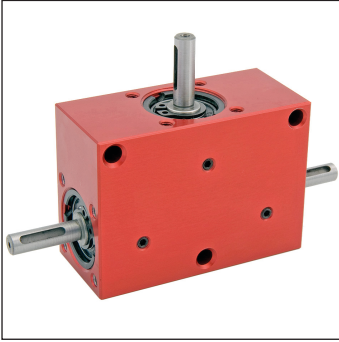


BLHM20e-cad
Drawings
Available

GEARBOXES

Bevel Heavy Duty Gearbox - Counter Rotating Outputs

Hardened Bevels 0.53 – 1.77 Nm **1:1 - 2:1**

Part Number	Ratio	Efficiency at 1000 Rpm
BLHM20-1	1:1	88%
BLHM20-2	2:1	88%

Weight: 0.160 kg approx.

Output Backlash: $\approx 1''$.

Max. Input Speed: 3,000 Rpm.

Greased for Life: Shell Gadus S2 V220AD 2.

Input/Output Key: KK2-10.

Testing in your application is necessary.

You will need to assess duty cycles and confirm gearbox suitability with your own calculations.

All figures listed are to be used for guidance only.

Output Torque Nm

Rpm Input	Reduction Ratio	
	1:1	2:1
3000	0.66	0.53
2000	0.72	0.58
1000	0.88	0.70
500	1.00	0.80
100	1.35	1.08
50	1.48	1.18
10	1.77	1.41

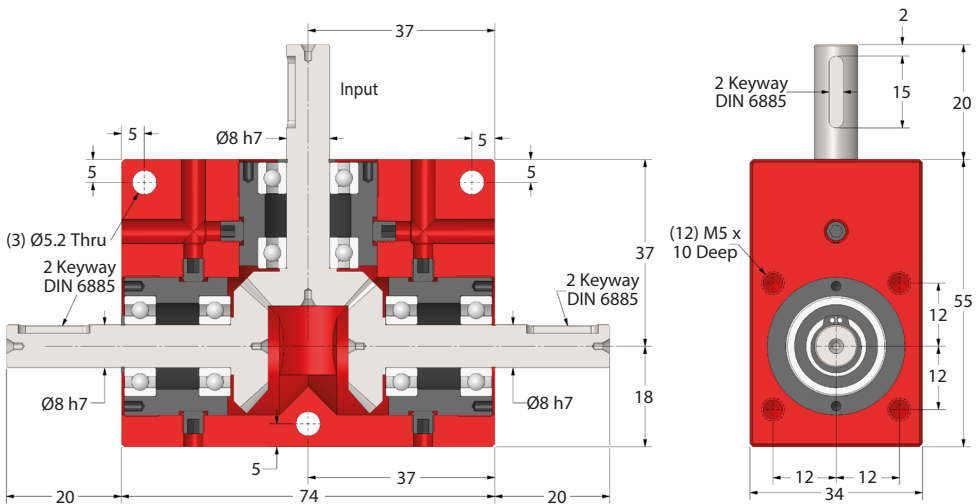
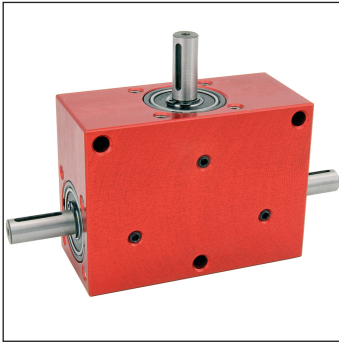
GEARBOXES

Bevel Heavy Duty Gearbox - Counter Rotating Outputs

Hardened Bevels 1.32 – 4.4 Nm **1:1 - 2:1**

e-cad
Drawings
Available

BLHM30



Part Number	Ratio	Efficiency at 1000 Rpm
BLHM30-1	1:1	88%
BLHM30-2	2:1	88%

Weight: 0.345 kg approx.

Output Backlash: $\approx 1^\circ$.

Max. Input Speed: 3,000 Rpm.

Greased for Life: Shell Gadus S2 V220AD 2.

Input/Output Key: KK2-14.

Testing in your application is necessary.

You will need to assess duty cycles and confirm gearbox suitability with your own calculations.

All figures listed are to be used for guidance only.

Output Torque Nm

Rpm	Reduction Ratio	
	1:1	2:1
3000	1.65	1.32
2000	1.81	1.45
1000	2.20	1.76
500	2.51	2.00
100	3.38	2.70
50	3.70	3.00
10	4.40	3.54

sales@ondrives.us
www.ondrives.us

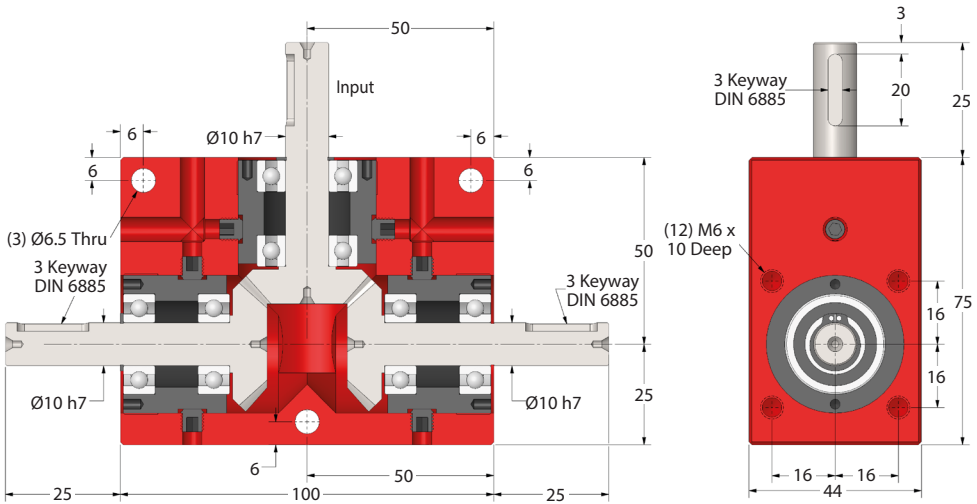
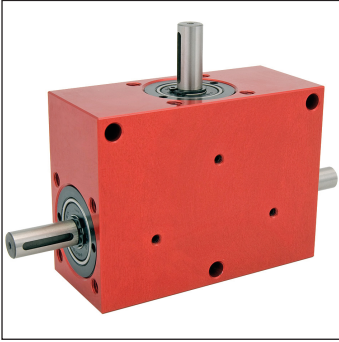
516-771-6777
516-771-6444

ondrives.US Corp.

BLHM40**e-cad**
Drawings
Available

GEARBOXES

Bevel Heavy Duty Gearbox - Counter Rotating Outputs

Hardened Bevels 3 – 10.3 Nm **1:1 - 2:1**

Part Number	Ratio	Efficiency at 1000 Rpm
BLHM40-1	1:1	88%
BLHM40-2	2:1	88%

Weight: 1.025 kg approx.

Output Backlash: $\approx 1'$.

Max. Input Speed: 3,000 Rpm.

Greased for Life: Shell Gadus S2 V220AD 2.

Input/Output Key: KK3-20.

Testing in your application is necessary.

You will need to assess duty cycles and confirm gearbox suitability with your own calculations.

All figures listed are to be used for guidance only.

Output Torque Nm

Rpm Input	Reduction Ratio	
	1:1	2:1
3000	4.0	3.0
2000	4.4	3.4
1000	5.1	4.0
500	5.8	4.6
100	7.6	6.0
50	8.5	6.3
10	10.3	8.0

ondrives.US Corp.☎ 516-771-6777
📠 516-771-6444📧 sales@ondrives.us
🌐 www.ondrives.us

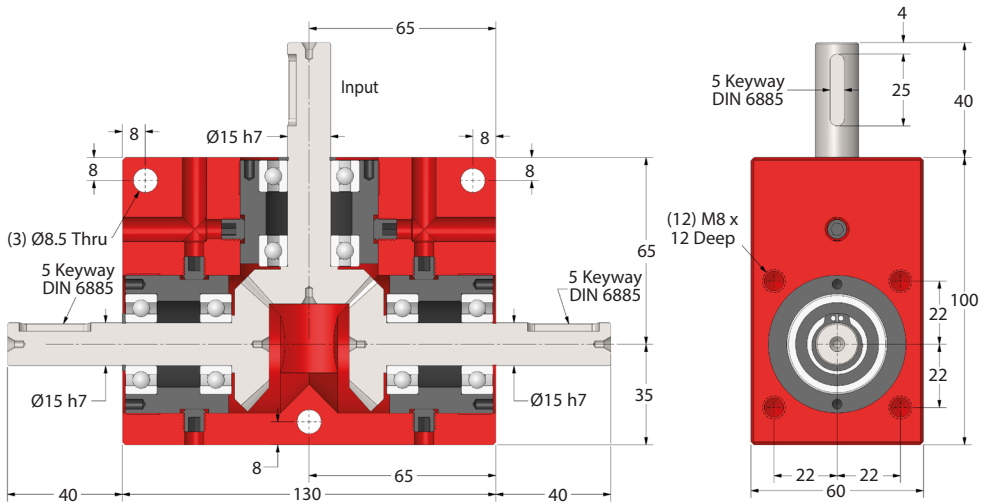
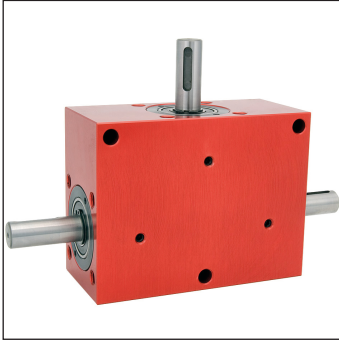
GEARBOXES

Bevel Heavy Duty Gearbox - Counter Rotating Outputs

Hardened Bevels 7.7 – 30 Nm **1:1 - 2:1**

e-cad
Drawings
Available

BLHM50



Part Number	Ratio	Efficiency at 1000 Rpm
BLHM50-1	1:1	88%
BLHM50-2	2:1	88%

Weight: 2.527 kg approx.

Output Backlash: $\approx 1^\circ$.

Max. Input Speed: 3,000 Rpm.

Greased for Life: Shell Gadus S2 V220AD 2.

Input/Output Key: KK5-25.

Testing in your application is necessary.

You will need to assess duty cycles and confirm gearbox suitability with your own calculations.

All figures listed are to be used for guidance only.

Output Torque Nm

Rpm	Reduction Ratio	
	1:1	2:1
Input		
3000	11.5	7.7
2000	13.2	8.7
1000	15.9	10.2
500	17.5	11.6
100	23.0	15.0
50	25.0	17.0
10	30.0	20.0

sales@ondrives.us
www.ondrives.us

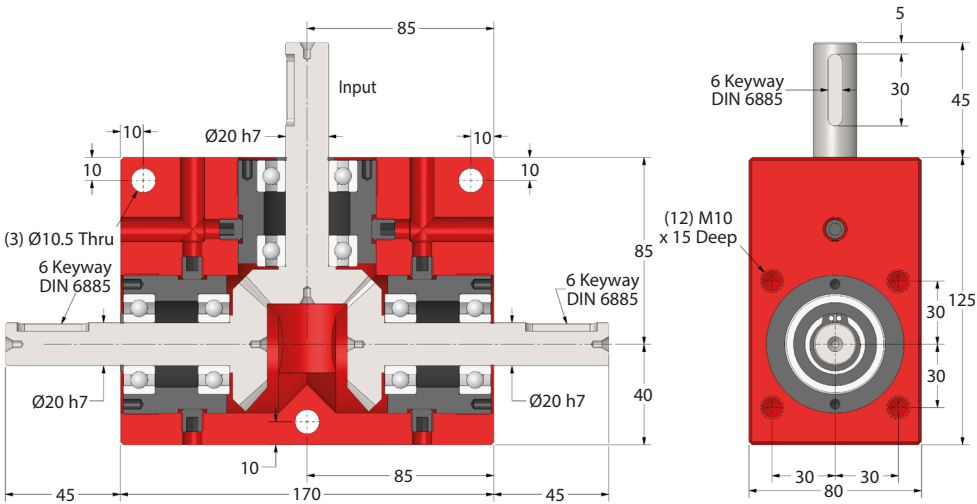
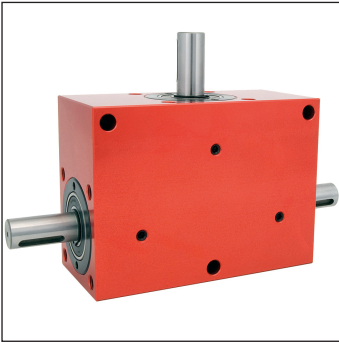
516-771-6777
516-771-6444

ondrives.US Corp.

BLHM60**e-cad**
Drawings
Available

GEARBOXES

Bevel Heavy Duty Gearbox - Counter Rotating Outputs

Hardened Bevels 19 – 70 Nm **1:1 - 2:1**

Part Number	Ratio	Efficiency at 1000 Rpm
BLHM60-1	1:1	88%
BLHM60-2	2:1	88%

Weight: 5.200 kg approx.

Output Backlash: ±1°.

Max. Input Speed: 3,000 Rpm.

Greased for Life: Shell Gadus S2 V220AD 2.

Input/Output Key: KK6-30.

Testing in your application is necessary.

You will need to assess duty cycles and confirm gearbox suitability with your own calculations.

All figures listed are to be used for guidance only.

Output Torque Nm

Rpm Input	Reduction Ratio	
	1:1	2:1
3000	26	19
2000	30	22
1000	35	25
500	40	29
100	53	38
50	57	43
10	70	52

ondrives.US Corp.☎ 516-771-6777
📠 516-771-6444📧 sales@ondrives.us
🌐 www.ondrives.us

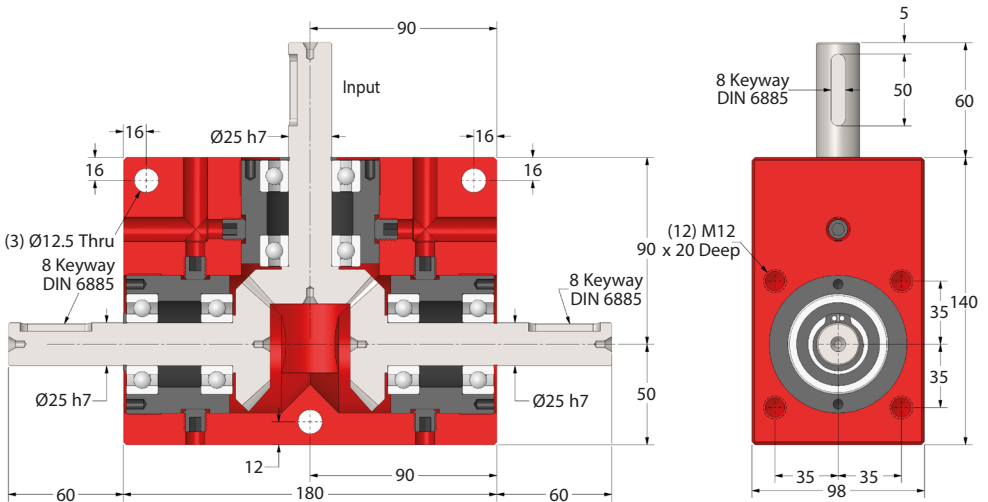
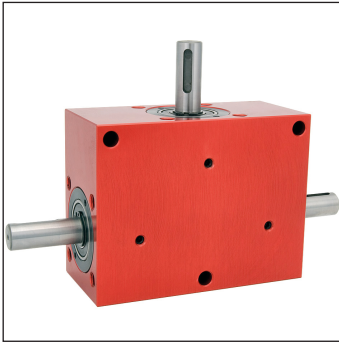
GEARBOXES

Bevel Heavy Duty Gearbox - Counter Rotating Outputs

Hardened Bevels 26 – 128 Nm **1:1 - 2:1**

e-cad
Drawings
Available

BLHM70



Part Number	Ratio	Efficiency at 1000 Rpm
BLHM70-1	1:1	88%
BLHM70-2	2:1	88%

Weight: 8,762 kg approx.

Output Backlash: $\approx 1^\circ$.

Max. Input Speed: 3,000 Rpm.

Greased for Life: Shell Gadus S2 V220AD 2.

Input/Output Key: KK8-7-50.

Testing in your application is necessary.

You will need to assess duty cycles and confirm gearbox suitability with your own calculations.

All figures listed are to be used for guidance only.

Output Torque Nm

Rpm	Reduction Ratio	
	1:1	2:1
Input		
3000	43	26
2000	47	30
1000	51	34
500	64	38
100	85	51
50	94	60
10	128	77

sales@ondrives.us
www.ondrives.us

516-771-6777
516-771-6444

ondrives.US Corp.