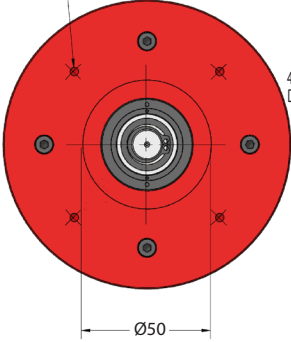
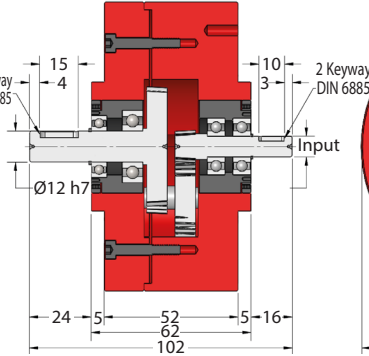
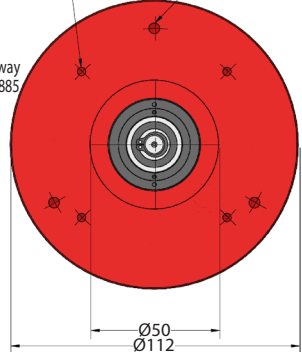


TG112**e-cad**
Drawings
Available

GEARBOXES

Inline Low Backlash Taper Gear Reducer

8mm Shaft Input, 12mm Shaft Output 3.1 – 12.7 Nm **2:1 - 16:1**(4) M4 x 8 Deep
(80 PCD)4 Keyway
DIN 6885(3) M5 x 15 Deep
(90 PCD)
(4) M4 x 8 Deep
(80 PCD)

Part Number	Ratio	Efficiency at 1000 Rpm	Nm Output at 1000 Rpm	Direction
TG112-2A	2:1	92%	4.0	Same
TG112-4A	4:1	92%	4.5	Same
TG112-5A	5:1	92%	5.0	Same
TG112-6A	6:1	92%	5.6	Same
TG112-8A	8:1	92%	5.6	Same
TG112-10A	10:1	92%	5.0	Same
TG112-12A	12:1	92%	5.0	Same
TG112-16A	16:1	92%	4.5	Same

Weight: 1.50 kg.**Output Backlash:** ≤8 arc/min at output.**Max. Input Speed:** 3,000 Rpm.**Greased for Life:** Shell Gadus S5 V42P 2.5.**Output Key:** KK4-15. **Input Key:** KK2-10.

Testing in your application is necessary.

You will need to assess duty cycles and confirm gearbox suitability with your own calculations.

All figures listed are to be used for guidance only.

Output Torque Nm

Rpm	Reduction Ratio							
	2:1	4:1	5:1	6:1	8:1	10:1	12:1	16:1
3000	3.1	3.7	4.1	4.1	4.5	4.1	4.1	3.7
2000	3.5	3.9	4.2	4.5	4.8	4.3	4.3	3.8
1000	4.0	4.5	5.0	5.6	5.6	5.0	5.0	4.5
500	4.7	5.1	5.6	6.4	6.4	5.6	5.7	5.1
200	5.3	6.3	7.0	7.0	8.0	6.3	7.1	6.3
100	6.0	7.8	8.0	8.0	9.8	7.8	8.8	7.8
50	7.4	7.8	9.8	9.8	9.8	7.8	8.8	7.8
10	8.1	9.5	11.4	12.1	12.7	9.6	11.5	9.5

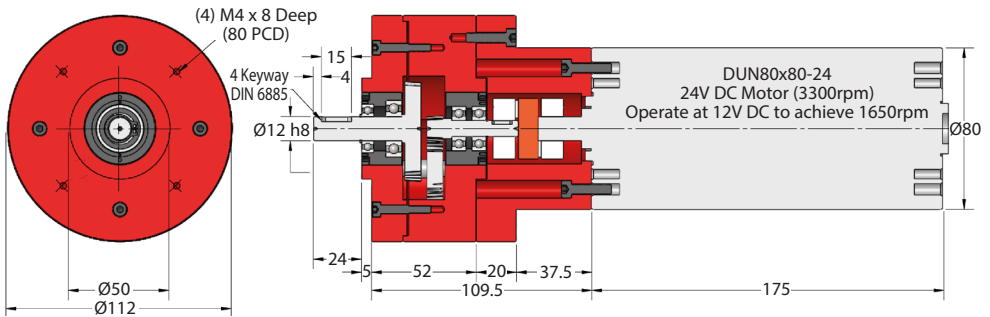
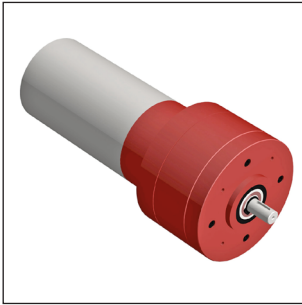
GEARBOXES

Motorised Taper Gear Reducer

With DC Motor Fitted, 1.14 – 5Nm **2:1 - 16:1**

e-cad
Drawings
Available

TG112-ADC



Part Number	Ratio	Output Torque at 1650 Rpm Input Nm	L	Direction	DC Motor
TG112-2ADC	2:1	1.14	175	Same	DUN80x80-24
TG112-4ADC	4:1	2.28	175	Same	DUN80x80-24
TG112-5ADC	5:1	2.85	175	Same	DUN80x80-24
TG112-6ADC	6:1	3.42	175	Same	DUN80x80-24
TG112-8ADC	8:1	4.56	175	Same	DUN80x80-24
TG112-10ADC	10:1	5.00	175	Same	DUN80x80-24
TG112-12ADC	12:1	5.00	175	Same	DUN80x80-24
TG112-16ADC	16:1	4.50	175	Same	DUN80x80-24

Weight: 3.5 kg.

Assembly includes:-

- 1 x Gearhead
- 1 x DC Motor
- 1 x Shaft Coupling
- 1 x Set of fixing screws for motor to plate
- 1 x Set of fixing screws for plate to gearbox
- 1 x Adaptor plate

Check motor data and gearbox chart for max. torque figures. Testing in your applications is necessary.

You will need to assess duty cycles and confirm gearbox suitability with your own calculations. All figures listed are to be used for guidance only.