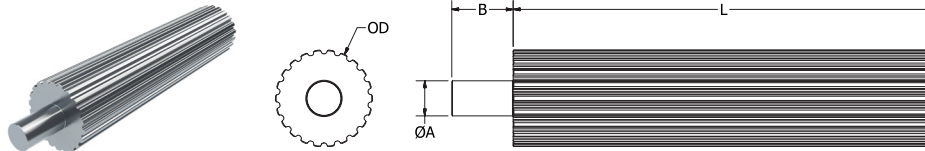


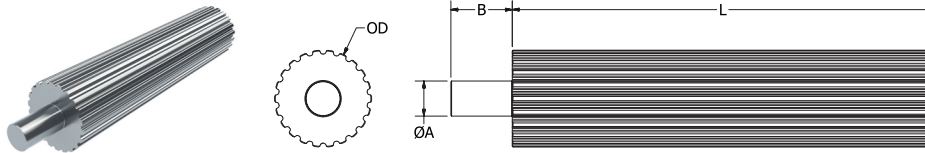
40DP**40DP TIMING PULLEY STOCK****40DP****.0816 Pitch (2.07mm)****.0816 Circular Pitch
Material - Aluminum**

Dimensions in inches

Part Number	No. of Grooves	Pitch Diameter	OD +.000/-003	Usable Length (L)	Journal Diameter (A)	Journal Length (B)
40DP-2PA-010	10	0.260	0.246	2	3/16 to 7/32 ‡	1.00
40DP-2PA-011	11	0.286	0.272			
40DP-2PA-012	12	0.312	0.298	3	1/4 to 3/8 ‡	
40DP-2PA-013	13	0.338	0.324			
40DP-2PA-014	14	0.364	0.350		5/16 to 7/16 ‡	
40DP-2PA-015	15	0.390	0.376			
40DP-2PA-016	16	0.416	0.402			
40DP-2PA-017	17	0.442	0.428			
40DP-2PA-018	18	0.468	0.454			
40DP-2PA-019	19	0.494	0.480	4	3/8	0.88
40DP-2PA-020	20	0.520	0.506			
40DP-2PA-021	21	0.546	0.532			
40DP-2PA-022	22	0.572	0.558			
40DP-2PA-023	23	0.598	0.584	5	1/2	3/4 to 1 ‡
40DP-5PA-024	24	0.624	0.610			
40DP-5PA-025	25	0.650	0.636			
40DP-5PA-026	26	0.676	0.662			
40DP-5PA-027	27	0.702	0.688			
40DP-5PA-028	28	0.728	0.714			
40DP-5PA-029	29	0.754	0.740			
40DP-6PA-030	30	0.780	0.766	6	1/2	3/4 to 1 ‡
40DP-6PA-031	31	0.806	0.792			
40DP-6PA-032	32	0.832	0.818			
40DP-6PA-033	33	0.858	0.844			
40DP-6PA-034	34	0.884	0.870			
40DP-6PA-035	35	0.910	0.896			
40DP-6PA-036	36	0.936	0.922			
40DP-6PA-038	38	0.988	0.974			
40DP-6PA-039	39	1.014	1.000			
40DP-7PA-040	40	1.040	1.026			

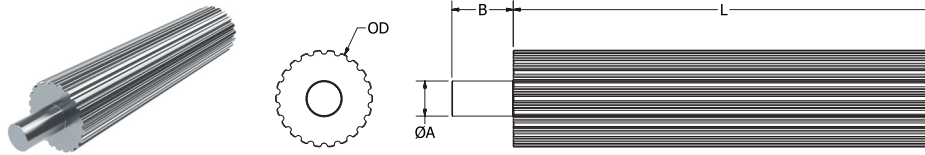
‡ Dimension at Ondrives.US option

Continued on next page

40DP**40DP TIMING PULLEY STOCK****40DP****.0816 Pitch (2.07mm)****.0816 Circular Pitch
Material - Aluminum**Dimensions in inches
Continued from previous page

Part Number	No. of Grooves	Pitch Diameter	OD +.000/- .003	Usable Length (L)	Journal Diameter (A)	Journal Length (B)
40DP-7PA-042	42	1.092	1.078	7	1/2	3/4 to 1 ‡
40DP-7PA-044	44	1.144	1.130			
40DP-7PA-045	45	1.170	1.156			
40DP-7PA-048	48	1.248	1.234			
40DP-7PA-050	50	1.300	1.286			
40DP-7PA-051	51	1.326	1.312			
40DP-7PA-054	54	1.404	1.390			
40DP-7PA-055	55	1.430	1.416			
40DP-7PA-056	56	1.456	1.442			
40DP-7PA-057	57	1.482	1.468			
40DP-8PA-060	60	1.560	1.546	8	3/4	
40DP-8PA-064	64	1.664	1.650			
40DP-8PA-065	65	1.690	1.676			
40DP-8PA-066	66	1.716	1.702			
40DP-8PA-070	70	1.820	1.806			
40DP-8PA-072	72	1.872	1.858			
40DP-8PA-075	75	1.950	1.936			
40DP-8PA-080	80	2.080	2.066			
40DP-8PA-082	82	2.132	2.118			
40DP-8PA-084	84	2.184	2.170			
40DP-8PA-088	88	2.288	2.274			
40DP-8PA-090	90	2.340	2.326			
40DP-8PA-096	96	2.496	2.482			
40DP-8PA-098	98	2.548	2.534			
40DP-8PA-100	100	2.600	2.586			
40DP-8PA-102	102	2.652	2.638			
40DP-8PA-108	108	2.808	2.794			
40DP-8PA-110	110	2.860	2.846			
40DP-8PA-120	120	3.120	3.106			
40DP-8PA-130	130	3.380	3.366			
40DP-8PA-140	140	3.640	3.626			
40DP-8PA-150	150	3.900	3.886			

‡ Dimension at Ondrives.US option

MXL**MXL TIMING PULLEY STOCK****MXL****.080 Pitch (2.03mm)****.080 Circular Pitch
Material - Aluminum**

OD Tolerance:

Up to 40 Grooves +.002/-.000

42 to 45 Grooves +.003/-.000

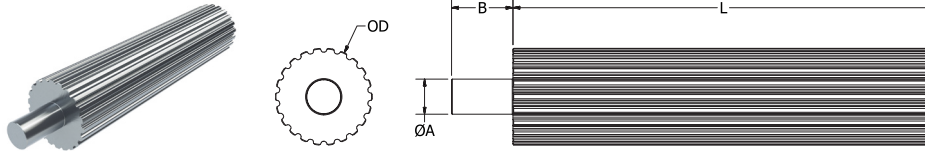
Dimensions in inches

Part Number	No. of Grooves	Pitch Diameter	OD	Usable Length (L)	Journal Diameter (A)	Journal Length (B)
MXL-2PA-010	10	0.255	0.235	2	3/16 to 5/16 ‡	1.00
MXL-2PA-011	11	0.280	0.260			
MXL-2PA-012	12	0.306	0.286			
MXL-2PA-013	13	0.331	0.311	3	1/4 to 3/8 ‡	
MXL-3PA-014	14	0.357	0.337			
MXL-3PA-015	15	0.382	0.362			
MXL-3PA-016	16	0.407	0.387			
MXL-3PA-017	17	0.433	0.413			
MXL-3PA-018	18	0.458	0.438			
MXL-3PA-019	19	0.484	0.464	4	3/8	0.88
MXL-4PA-020	20	0.509	0.489			
MXL-4PA-021	21	0.535	0.515			
MXL-4PA-022	22	0.560	0.540	5	1/2	3/4 to 1 ‡
MXL-4PA-023	23	0.586	0.566			
MXL-5PA-024	24	0.611	0.591			
MXL-5PA-025	25	0.637	0.617			
MXL-5PA-026	26	0.662	0.642			
MXL-5PA-027	27	0.687	0.667			
MXL-5PA-028	28	0.713	0.693			
MXL-5PA-029	29	0.738	0.718	6		
MXL-6PA-030	30	0.764	0.744			
MXL-6PA-031	31	0.789	0.769			
MXL-6PA-032	32	0.815	0.795			
MXL-6PA-033	33	0.840	0.820			
MXL-6PA-034	34	0.866	0.846			
MXL-6PA-035	35	0.891	0.871			
MXL-6PA-036	36	0.917	0.897	7		
MXL-6PA-037	37	0.942	0.922			
MXL-6PA-038	38	0.968	0.948			
MXL-6PA-039	39	0.993	0.973			
MXL-7PA-040	40	1.019	0.999			
MXL-7PA-042	42	1.070	1.050			
MXL-7PA-044	44	1.120	1.100			
MXL-7PA-045	45	1.146	1.126			

‡ Dimension at Ondrives.US option

Continued on next page

ondrives.US Corp.**Page 2 - 7**216 N. Main St., Freeport, NY 11520
ISO9001:2008 Certifiedphone: 888-260-7466
fax: 516-771-6444www.ondrivesUS.com
sales@ondrivesUS.com

MXL**MXL TIMING PULLEY STOCK****MXL****.200 (1/5") Pitch****.080 Circular Pitch
Material - Aluminum**

OD Tolerance:

42 to 75 Grooves +.003/-.000

80 to 150 Grooves +.004/-.000

Dimensions in inches

Continued from previous page

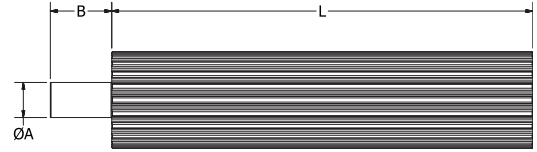
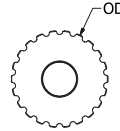
Part Number	No. of Grooves	Pitch Diameter	OD	Usable Length (L)	Journal Diameter (A)	Journal Length (B)
MXL-7PA-048	48	1.222	1.202	7	1/2	3/4 to 1 ‡
MXL-7PA-049	49	1.248	1.228			
MXL-7PA-050	50	1.273	1.253			
MXL-7PA-051	51	1.299	1.279			
MXL-7PA-052	52	1.324	1.304			
MXL-7PA-054	54	1.375	1.355			
MXL-7PA-055	55	1.401	1.381			
MXL-7PA-056	56	1.426	1.406			
MXL-7PA-057	57	1.451	1.431			
MXL-8PA-060	60	1.528	1.508			
MXL-8PA-064	64	1.630	1.610			
MXL-8PA-065	65	1.655	1.635			
MXL-8PA-066	66	1.681	1.661			
MXL-8PA-070	70	1.783	1.763			
MXL-8PA-072	72	1.833	1.813			
MXL-8PA-075	75	1.910	1.890			
MXL-8PA-080	80	2.037	2.017			
MXL-8PA-082	82	2.088	2.068			
MXL-8PA-084	84	2.139	2.119			
MXL-8PA-088	88	2.241	2.221			
MXL-8PA-090	90	2.292	2.272			
MXL-8PA-096	96	2.445	2.425			
MXL-8PA-098	98	2.496	2.476			
MXL-8PA-100	100	2.546	2.526			
MXL-8PA-102	102	2.597	2.577			
MXL-8PA-108	108	2.750	2.730			
MXL-8PA-110	110	2.801	2.781			
MXL-8PA-120	120	3.056	3.036			
MXL-8PA-130	130	3.310	3.290			
MXL-8PA-140	140	3.565	3.545			
MXL-8PA-150	150	3.820	3.800			

‡ Dimension at Ondrives.US option

XL**XL TIMING PULLEY STOCK****XL****.200 (1/5") Pitch****.080 Circular Pitch
Material - Aluminum**

OD Tolerance:

8 to 16 Grooves +.002/-.000
 17 to 31 Grooves +.003/-.000
 32 to 62 Grooves +.004/-.000
 72 to 80 Grooves +.005/-.000



Dimensions in inches

Part Number		No. of Grooves	Pitch Diameter	OD	Usable Length (L)	Journal Diameter (A)	Journal Length (B)
Aluminum	Steel						
XL-6PA-008	XL-6PS-008	8	0.509	0.489	6	1/2 TO 7/16 ‡	7/8
XL-6PA-010	XL-6PS-010	10	0.637	0.617			
XL-6PA-011	XL-6PS-011	11	0.700	0.680			
XL-8PA-012	XL-8PS-012	12	0.764	0.744			
XL-8PA-013	XL-8PS-013	13	0.828	0.808			
XL-8PA-014	XL-8PS-014	14	0.891	0.871			
XL-8PA-015	XL-8PS-015	15	0.955	0.935			
XL-8PA-016	XL-8PS-016	16	1.019	0.999			
XL-8PA-017	XL-8PS-017	17	1.082	1.062			
XL-8PA-018	XL-8PS-018	18	1.146	1.126			
XL-8PA-019	XL-8PS-019	19	1.210	1.190	8	1/2	3/4 to 1 ‡
XL-8PA-020	XL-8PS-020	20	1.273	1.253			
XL-8PA-021	XL-8PS-021	21	1.337	1.317			
XL-8PA-022	XL-8PS-022	22	1.401	1.381			
XL-8PA-023	XL-8PS-023	23	1.464	1.444			
XL-8PA-024	XL-8PS-024	24	1.528	1.508			
XL-8PA-025	XL-8PS-025	25	1.592	1.572			
XL-8PA-026	XL-8PS-026	26	1.655	1.635			
XL-8PA-027	XL-8PS-027	27	1.719	1.699			
XL-8PA-028	XL-8PS-028	28	1.783	1.763			
XL-8PA-029	XL-8PS-029	29	1.846	1.826	3/4 to 1 ‡	1	
XL-8PA-030	XL-8PS-030	30	1.910	1.890			
XL-8PA-031	XL-8PS-031	31	1.974	1.954			
XL-8PA-032	XL-8PS-032	32	2.037	2.017			
XL-8PA-033	XL-8PS-033	33	2.101	2.081			
XL-8PA-034	XL-8PS-034	34	2.165	2.145			
XL-8PA-035	XL-8PS-035	35	2.228	2.208			
XL-8PA-036	XL-8PS-036	36	2.292	2.272			
XL-8PA-037	XL-8PS-037	37	2.355	2.335			
XL-8PA-038	XL-8PS-038	38	2.419	2.399			
XL-8PA-040	XL-8PS-040	40	2.546	2.526			
XL-8PA-042	XL-8PS-042	42	2.674	2.654			
XL-8PA-043	XL-8PS-043	43	2.737	2.717			
XL-8PA-044	XL-8PS-044	44	2.801	2.781			
XL-8PA-045	XL-8PS-045	45	2.865	2.845			
XL-8PA-046	XL-8PS-046	46	2.928	2.908			
XL-8PA-048	XL-8PS-048	48	3.056	3.036			
XL-8PA-050	XL-8PS-050	50	3.183	3.163			
XL-8PA-060	XL-8PS-060	60	3.820	3.800			
XL-8PA-062	XL-8PS-062	62	3.947	3.927			
XL-8PA-072	XL-8PS-072	72	4.584	4.564			
XL-8PA-080	XL-8PS-080	80	5.093	5.073			

‡ Dimension at Ondrives.US option

Continued on next page

ondrives.US Corp.**Page 3 - 13**216 N. Main St., Freeport, NY 11520
ISO9001:2008 Certifiedphone: 888-260-7466
fax: 516-771-6444www.ondrivesUS.com
sales@ondrivesUS.com

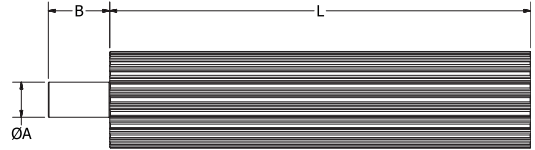
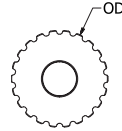
XL**XL TIMING PULLEY STOCK****XL****.200 (1/5") Pitch****.200 Circular Pitch**

OD Tolerance:

18 to 31 Grooves +.003/-.000

32 to 60 Grooves +.004/-.000

64 & 72 Grooves +.005/-.000



Continued from previous page

Part Number		No. of Grooves	Pitch Diameter	OD	Usable Length (L)	Journal Diameter (A)	Journal Length (B)
Aluminum	Steel						
XL-12PA-018	XL-12PS-018	18	1.146	1.126	12	1/2	3/4 to 1 ‡
XL-12PA-019	XL-12PS-019	19	1.210	1.190			
XL-12PA-020	XL-12PS-020	20	1.273	1.253			
XL-12PA-021	XL-12PS-021	21	1.337	1.317			
XL-12PA-022	XL-12PS-022	22	1.401	1.381			
XL-12PA-023	XL-12PS-023	23	1.464	1.444			
XL-12PA-024	XL-12PS-024	24	1.528	1.508			
XL-12PA-025	XL-12PS-025	25	1.592	1.572			
XL-12PA-026	XL-12PS-026	26	1.655	1.635			
XL-12PA-027	XL-12PS-027	27	1.719	1.699			
XL-12PA-028	XL-12PS-028	28	1.783	1.763			
XL-12PA-029	XL-12PS-029	29	1.846	1.826			
XL-12PA-030	XL-12PS-030	30	1.910	1.890			
XL-12PA-031	XL-12PS-031	31	1.974	1.954			
XL-12PA-032	XL-12PS-032	32	2.037	2.017			
XL-12PA-033	XL-12PS-033	33	2.101	2.081			
XL-12PA-034	XL-12PS-034	34	2.165	2.145			
XL-12PA-035	XL-12PS-035	35	2.228	2.208			
XL-12PA-036	XL-12PS-036	36	2.292	2.272			
XL-12PA-037	XL-12PS-037	37	2.355	2.335			
XL-12PA-038	XL-12PS-038	38	2.419	2.399			
XL-12PA-039	XL-12PS-039	39	2.483	2.463			
XL-12PA-040	XL-12PS-040	40	2.546	2.526			
XL-12PA-041	XL-12PS-041	41	2.610	2.590			
XL-12PA-042	XL-12PS-042	42	2.674	2.654			
XL-12PA-044	XL-12PS-044	44	2.801	2.781			
XL-12PA-045	XL-12PS-045	45	2.865	2.845			
XL-12PA-046	XL-12PS-046	46	2.928	2.908			
XL-12PA-048	XL-12PS-048	48	3.056	3.036			
XL-12PA-050	XL-12PS-050	50	3.183	3.163			
XL-12PA-054	XL-12PS-054	54	3.438	3.418			
XL-12PA-060	XL-12PS-060	60	3.820	3.800			
XL-12PA-064	XL-12PS-064	64	4.074	4.054			
XL-12PA-072	XL-12PS-072	72	4.584	4.564			
						3/4 to 1 ‡	1
						1	

‡ Dimension at Ondrives.US option



L TIMING PULLEY STOCK



.375 Pitch (9.52mm)

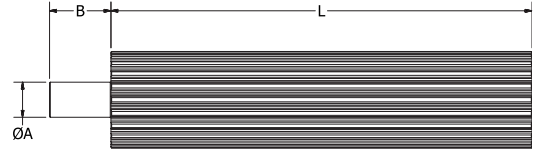
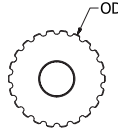
.375 Circular Pitch

OD Tolerance:

10 to 17 Grooves +.003/-.000

18 to 32 Grooves +.004/-.000

34 to 48 Grooves +.005/-.000



Dimensions in inches

Part Number		No. of Grooves	Pitch Diameter	OD	Usable Length (L)	Journal Diameter (A)	Journal Length (B)
Aluminum	Steel						
L-8PA-010	L-8PS-010	10	1.194	1.164	8	3/4	1-1/8
L-8PA-011	L-8PS-011	11	1.313	1.283			
L-12PA-012	L-12PS-012	12	1.432	1.402	12		
L-8PA-013	L-8PS-013	13	1.552	1.522	8		
L-8PA-014	L-8PS-014	14	1.671	1.641	12	1	3/4 to 1 ‡
L-12PA-014	L-12PS-014	14	1.671	1.641			
L-12PA-015	L-12PS-015	15	1.790	1.760			
L-12PA-016	L-12PS-016	16	1.910	1.880			
L-8PA-017	L-8PS-017	17	2.029	1.999	8		
L-12PA-018	---	18	2.149	2.119	12		
L-8PA-019	L-8PS-019	19	2.268	2.238	8		
L-12PA-020	L-12PS-020	20	2.387	2.357	12		
L-12PA-021	L-12PS-021	21	2.507	2.477			
L-12PA-022	L-12PS-022	22	2.626	2.596			
L-10PA-023	---	23	2.745	2.715	10		
L-12PA-024	L-12PS-024	24	2.865	2.835	12		
L-8PA-026	L-8PS-026	26	3.104	3.074	8		
L-12PA-028	---	28	3.342	3.312	12		
L-10PA-029	---	29	3.462	3.432	10		
L-12PA-030	L-12PS-030	30	3.581	3.551	12		
L-12PA-032	L-12PS-032	32	3.820	3.790			
L-10PA-034	---	34	4.058	4.028	10		
L-12PA-036	L-12PS-036	36	4.297	4.267	12		
L-10PA-040	---	40	4.775	4.745	10	1	
L-10PA-042	---	42	5.013	4.983			
L-10PA-044	---	44	5.252	5.222			
L-10PA-048	---	48	5.730	5.700			

‡ Dimension at Ondrives.US option

3HTD**3HTD TIMING PULLEY STOCK****3HTD**

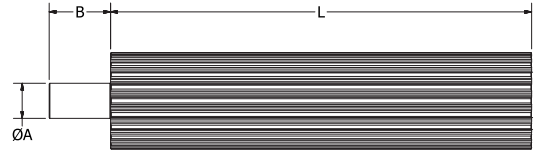
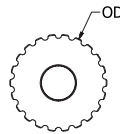
3mm Pitch (.1181 inch)

.1181 Circular Pitch

OD Tolerance:

Up to 27 Grooves +.002/-.000

28 to 37 Grooves +.003/-.000



Dimensions in inches

Part Number		No. of Grooves	Pitch Diameter	OD	Usable Length (L)	Journal Diameter (A)	Journal Length (B)
Aluminum	Steel						
3HTD-3PA-010	3HTD-3PS-010	10	.376	.346	3	3/16	1
3HTD-3PA-011	3HTD-3PS-011	11	.414	.384			
3HTD-4PA-012	3HTD-4PS-012	12	.451	.421	4	1/4	7/8
3HTD-4PA-013	3HTD-4PS-013	13	.489	.459			
3HTD-4PA-014	3HTD-4PS-014	14	.526	.496			
3HTD-4PA-015	3HTD-4PS-015	15	.564	.534	5	5/16	3/8
3HTD-5PA-016	3HTD-5PS-016	16	.602	.572			
3HTD-5PA-017	3HTD-5PS-017	17	.639	.609			
3HTD-5PA-018	3HTD-5PS-018	18	.677	.647			
3HTD-5PA-019	3HTD-5PS-019	19	.714	.684	6	1/2	3/4 to 1 ‡
3HTD-6PA-020	3HTD-6PS-020	20	.752	.722			
3HTD-6PA-021	3HTD-6PS-021	21	.790	.760			
3HTD-6PA-022	3HTD-6PS-022	22	.827	.797			
3HTD-6PA-023	3HTD-6PS-023	23	.865	.835			
3HTD-6PA-024	3HTD-6PS-024	24	.902	.872			
3HTD-6PA-025	3HTD-6PS-025	25	.940	.910			
3HTD-6PA-026	3HTD-6PS-026	26	.977	.947			
3HTD-6PA-027	3HTD-6PS-027	27	1.015	.985			
3HTD-6PA-028	3HTD-6PS-028	28	1.053	1.023	7	1.098	1.135
3HTD-7PA-030	3HTD-7PS-030	30	1.128	1.098			
3HTD-7PA-031	3HTD-7PS-031	31	1.165	1.135			
3HTD-7PA-032	3HTD-7PS-032	32	1.203	1.173	8	1.241	1.211
3HTD-7PA-033	3HTD-7PS-033	33	1.241	1.211			
3HTD-7PA-034	3HTD-7PS-034	34	1.278	1.248	8	1.316	1.286
3HTD-7PA-035	3HTD-7PS-035	35	1.316	1.286			
3HTD-8PA-036	3HTD-8PS-036	36	1.353	1.323	8	1.391	1.361
3HTD-8PA-037	3HTD-8PS-037	37	1.391	1.361			

‡ Dimension at Ondrives.US option

Continued on next page

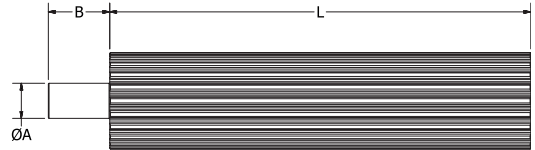
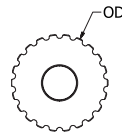
3HTD**3HTD TIMING PULLEY STOCK****3HTD**

3mm Pitch (.1181 inch)

.1181 Circular Pitch

OD Tolerance:

38 to 52 Grooves +.003/-.000
 54 to 100 Grooves +.004/-.000
 110 to 160 Grooves +.005/-.000



Dimensions in inches
 Continued from previous page

Part Number		No. of Grooves	Pitch Diameter	OD	Usable Length (L)	Journal Diameter (A)	Journal Length (B)
Aluminum	Steel						
3HTD-8PA-038	3HTD-8PS-038	38	1.429	1.399	8	1/2	3/4 to 1 ‡
3HTD-8PA-039	3HTD-8PS-039	39	1.466	1.436			
3HTD-8PA-040	3HTD-8PS-040	40	1.504	1.474			
3HTD-8PA-042	3HTD-8PS-042	42	1.579	1.549			
3HTD-8PA-044	3HTD-8PS-044	44	1.654	1.624			
3HTD-8PA-045	3HTD-8PS-045	45	1.692	1.662			
3HTD-8PA-048	3HTD-8PS-048	48	1.805	1.775			
3HTD-8PA-050	3HTD-8PS-050	50	1.880	1.850			
3HTD-8PA-052	3HTD-8PS-052	52	1.955	1.925			
3HTD-8PA-054	3HTD-8PS-054	54	2.030	2.000			
3HTD-8PA-056	3HTD-8PS-056	56	2.105	2.075			
3HTD-8PA-060	3HTD-8PS-060	60	2.256	2.226			
3HTD-8PA-062	3HTD-8PS-062	62	2.331	2.301			
3HTD-8PA-064	3HTD-8PS-064	64	2.406	2.376			
3HTD-8PA-066	3HTD-8PS-066	66	2.481	2.451			
3HTD-8PA-068	3HTD-8PS-068	68	2.556	2.526			
3HTD-8PA-070	3HTD-8PS-070	70	2.632	2.602			
3HTD-8PA-072	3HTD-8PS-072	72	2.707	2.677			
3HTD-8PA-075	3HTD-8PS-075	75	2.820	2.790			
3HTD-8PA-080	3HTD-8PS-080	80	3.008	2.978			
3HTD-8PA-090	3HTD-8PS-090	90	3.384	3.354			
3HTD-8PA-100	3HTD-8PS-100	100	3.760	3.730	1	1	
3HTD-8PA-110	3HTD-8PS-110	110	4.136	4.106			
3HTD-8PA-120	3HTD-8PS-120	120	4.511	4.481			
3HTD-8PA-130	3HTD-8PS-130	130	4.887	4.857			
3HTD-8PA-140	3HTD-8PS-140	140	5.263	5.233			
3HTD-8PA-150	3HTD-8PS-150	150	5.639	5.609			
3HTD-8PA-160	3HTD-8PS-160	160	6.015	5.985			

‡ Dimension at Ondrives.US option

5HTD**5HTD TIMING PULLEY STOCK****5HTD**

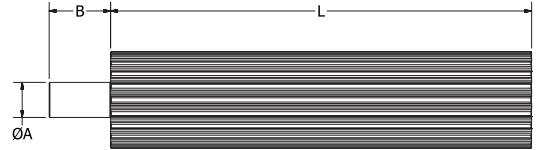
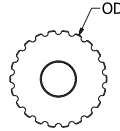
5mm Pitch (.1969 inch)

.1969 Circular Pitch

OD Tolerance:

Up to 16 Grooves +.002/-.000

17 to 32 Grooves +.003/-.000



Dimensions in inches

Part Number		No. of Grooves	Pitch Diameter	OD	Usable Length (L)	Journal Diameter (A)	Journal Length (B)
Aluminum	Steel						
5HTD-6PA-012	5HTD-6PS-012	12	.752	.707	6	1/2	7/8
5HTD-6PA-013	5HTD-6PS-013	13	.815	.770			
5HTD-7PA-014	5HTD-7PS-014	14	.877	.832	7	1/2	3/4 to 1 ‡
5HTD-7PA-015	5HTD-7PS-015	15	.940	.895			
5HTD-7PA-016	5HTD-7PS-016	16	1.003	.958			
5HTD-7PA-017	5HTD-7PS-017	17	1.065	1.020			
5HTD-8PA-018	5HTD-8PS-018	18	1.128	1.083	8	1/2	
5HTD-8PA-019	5HTD-8PS-019	19	1.191	1.146			
5HTD-8PA-020	5HTD-8PS-020	20	1.253	1.208			
5HTD-8PA-021	5HTD-8PS-021	21	1.316	1.271			
5HTD-8PA-022	5HTD-8PS-022	22	1.379	1.334			
5HTD-8PA-023	5HTD-8PS-023	23	1.441	1.396			
5HTD-8PA-024	5HTD-8PS-024	24	1.504	1.459			
5HTD-8PA-025	5HTD-8PS-025	25	1.566	1.521			
5HTD-8PA-026	5HTD-8PS-026	26	1.629	1.584			
5HTD-8PA-027	5HTD-8PS-027	27	1.692	1.647			
5HTD-8PA-028	5HTD-8PS-028	28	1.754	1.709			
5HTD-8PA-029	5HTD-8PS-029	29	1.817	1.772			3/4
5HTD-8PA-030	5HTD-8PS-030	30	1.880	1.835			
5HTD-8PA-031	5HTD-8PS-031	31	1.942	1.897			
5HTD-8PA-032	5HTD-8PS-032	32	2.005	1.960			

‡ Dimension at Ondrives.US option

Continued on next page

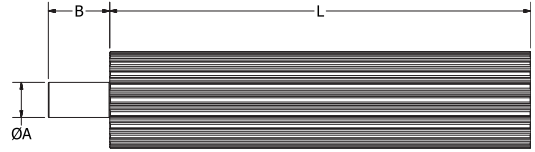
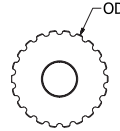
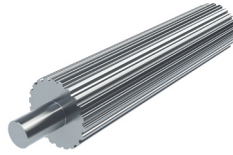
5HTD**5HTD TIMING PULLEY STOCK****5HTD**

5mm Pitch (.1969 inch)

.1969 Circular Pitch

OD Tolerance:

33 to 62 Grooves +.004/-.000
 65 to 112 Grooves +.005/-.000
 126 Grooves +.006/-.000



Dimensions in inches
 Continued from previous page

Part Number		No. of Grooves	Pitch Diameter	OD	Usable Length (L)	Journal Diameter (A)	Journal Length (B)
Aluminum	Steel						
5HTD-8PA-033	5HTD-8PS-033	33	2.068	2.023	8	3/4	3/4 to 1 ‡
5HTD-8PA-034	5HTD-8PS-034	34	2.130	2.085			
5HTD-8PA-035	5HTD-8PS-035	35	2.193	2.148			
5HTD-8PA-036	5HTD-8PS-036	36	2.256	2.211			
5HTD-8PA-038	5HTD-8PS-038	38	2.381	2.336			
5HTD-8PA-040	5HTD-8PS-040	40	2.506	2.461			
5HTD-8PA-042	5HTD-8PS-042	42	2.632	2.587			
5HTD-8PA-044	5HTD-8PS-044	44	2.757	2.712			
5HTD-8PA-045	5HTD-8PS-045	45	2.820	2.775			
5HTD-8PA-046	5HTD-8PS-046	46	2.882	2.837			
5HTD-8PA-048	5HTD-8PS-048	48	3.008	2.963			
5HTD-8PA-050	5HTD-8PS-050	50	3.133	3.088			
5HTD-8PA-054	5HTD-8PS-054	54	3.384	3.339			
5HTD-8PA-056	5HTD-8PS-056	56	3.509	3.464			
5HTD-8PA-060	5HTD-8PS-060	60	3.760	3.715			
5HTD-8PA-062	5HTD-8PS-062	62	3.885	3.840			
5HTD-8PA-065	5HTD-8PS-065	65	4.073	4.028			
5HTD-8PA-072	5HTD-8PS-072	72	4.511	4.466			
5HTD-8PA-080	5HTD-8PS-080	80	5.013	4.968			
5HTD-8PA-090	5HTD-8PS-090	90	5.639	5.594			
5HTD-8PA-100	5HTD-8PS-100	100	6.266	6.221			
5HTD-6PA-112	5HTD-6PS-112	112	7.018	6.973	6	1	
5HTD-6PA-126	5HTD-6PS-126	126	7.895	7.850			

‡ Dimension at Ondrives.US option

2GT**GT®2 TIMING PULLEY STOCK****2GT**

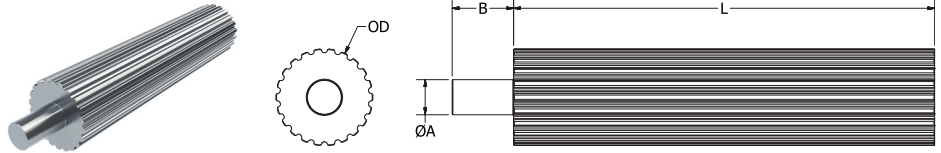
2mm Pitch (.0787 inch)

.0787 Circular Pitch
Material - Aluminum

OD Tolerance:

Up to 40 Grooves +.002/-.000

42 to 44 Grooves +.003/-.000



Dimensions in inches

Part Number	No. of Grooves	Pitch Diameter	OD	Usable Length (L)	Journal Diameter (A)	Journal Length (B)
2GT-2PA-010	10	.251	.231	2	5/16	1
2GT-2PA-011	11	.276	.256			
2GT-2PA-012	12	.301	.281			
2GT-2PA-013	13	.326	.306	3	3/8	
2GT-3PA-014	14	.351	.331			
2GT-3PA-015	15	.376	.356			
2GT-3PA-016	16	.401	.381			
2GT-3PA-017	17	.426	.406			
2GT-3PA-018	18	.451	.431	4	7/8	
2GT-3PA-019	19	.476	.456			
2GT-4PA-020	20	.501	.481			
2GT-4PA-021	21	.526	.506	5	1/2	3/4 to 1 ‡
2GT-4PA-022	22	.551	.531			
2GT-4PA-023	23	.576	.556			
2GT-5PA-024	24	.602	.582			
2GT-5PA-025	25	.627	.607			
2GT-5PA-026	26	.652	.632			
2GT-5PA-027	27	.677	.657			
2GT-5PA-028	28	.702	.682			
2GT-5PA-029	29	.727	.707			
2GT-6PA-030	30	.752	.732			
2GT-6PA-031	31	.777	.757			
2GT-6PA-032	32	.802	.782			
2GT-6PA-033	33	.827	.807			
2GT-6PA-034	34	.852	.832			
2GT-6PA-035	35	.877	.857			
2GT-6PA-036	36	.902	.882			
2GT-6PA-037	37	.927	.907			
2GT-6PA-038	38	.952	.932			
2GT-6PA-039	39	.977	.957			
2GT-6PA-040	40	1.003	.983	7	1/2	3/4 to 1 ‡
2GT-7PA-042	42	1.053	1.033			
2GT-7PA-044	44	1.103	1.083			

‡ Dimension at Ondrives.US option

Continued on next page

2GT**GT®2 TIMING PULLEY STOCK****2GT**

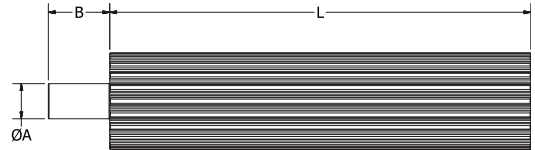
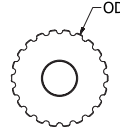
2mm Pitch (.0787 inch)

**.0787 Circular Pitch
Material - Aluminum**

OD Tolerance:

45 to 80 Grooves +.003/-.000

82 to 150 Grooves +.004/-.000

Dimensions in inches
Continued from previous page

Part Number	No. of Grooves	Pitch Diameter	OD	Usable Length (L)	Journal Diameter (A)	Journal Length (B)
2GT-7PA-045	45	1.128	1.108	7	1/2	3/4 to 1 ‡
2GT-7PA-048	48	1.203	1.183			
2GT-7PA-049	49	1.228	1.208			
2GT-7PA-050	50	1.253	1.233			
2GT-7PA-051	51	1.278	1.258			
2GT-7PA-052	52	1.303	1.283			
2GT-7PA-054	54	1.353	1.333			
2GT-7PA-055	55	1.379	1.359			
2GT-7PA-056	56	1.404	1.384			
2GT-7PA-057	57	1.429	1.409			
2GT-8PA-060	60	1.504	1.484	8	3/4	
2GT-8PA-064	64	1.604	1.584			
2GT-8PA-065	65	1.629	1.609			
2GT-8PA-066	66	1.654	1.634			
2GT-8PA-070	70	1.754	1.734			
2GT-8PA-072	72	1.805	1.785			
2GT-8PA-075	75	1.880	1.860			
2GT-8PA-080	80	2.005	1.985			
2GT-8PA-082	82	2.055	2.035			
2GT-8PA-084	84	2.105	2.085			
2GT-8PA-088	88	2.206	2.186			
2GT-8PA-090	90	2.256	2.236			
2GT-8PA-096	96	2.406	2.386			
2GT-8PA-098	98	2.456	2.436			
2GT-8PA-100	100	2.506	2.486			
2GT-8PA-102	102	2.557	2.537			
2GT-8PA-108	108	2.707	2.687			
2GT-8PA-110	110	2.757	2.737			
2GT-8PA-120	120	3.008	2.988			
2GT-8PA-130	130	3.258	3.238			
2GT-8PA-140	140	3.509	3.489			
2GT-8PA-150	150	3.760	3.740			

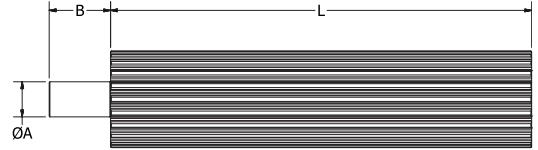
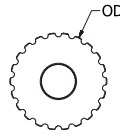
‡ Dimension at Ondrives.US option

3GT**GT®2 TIMING PULLEY STOCK****3GT****3mm Pitch (.1181 inch)****.1181 Circular Pitch
Material - Aluminum**

OD Tolerance:

Up to 27 Grooves +.002/-.000

28 to 37 Grooves +.003/-.000



Dimensions in inches

Part Number	No. of Grooves	Pitch Diameter	OD	Usable Length (L)	Journal Diameter (A)	Journal Length (B)	
3GT-3PA-009	9	.338	.308	3	3/16 to 3/8 ‡	1	
3GT-3PA-010	10	.376	.346		1/4 to 3/8 ‡		
3GT-3PA-011	11	.414	.384			4	5/16 to 7/16 ‡
3GT-4PA-012	12	.451	.421	3/8			
3GT-4PA-013	13	.489	.459		5		1/2
3GT-4PA-014	14	.526	.496				
3GT-4PA-015	15	.564	.534				
3GT-5PA-016	16	.602	.572				
3GT-5PA-017	17	.639	.609	6			
3GT-5PA-018	18	.677	.647				
3GT-5PA-019	19	.714	.684				
3GT-6PA-020	20	.752	.722				
3GT-6PA-021	21	.790	.760				
3GT-6PA-022	22	.827	.797				
3GT-6PA-023	23	.865	.835				
3GT-6PA-024	24	.902	.872				
3GT-6PA-025	25	.940	.910				
3GT-6PA-026	26	.977	.947		7		
3GT-6PA-027	27	1.015	.985				
3GT-6PA-028	28	1.053	1.023				
3GT-6PA-029	29	1.090	1.060				
3GT-7PA-030	30	1.128	1.098				
3GT-7PA-031	31	1.165	1.135				
3GT-7PA-032	32	1.203	1.173				
3GT-7PA-033	33	1.241	1.211				
3GT-7PA-034	34	1.278	1.248	8			
3GT-7PA-035	35	1.316	1.286				
3GT-8PA-036	36	1.353	1.323				
3GT-8PA-037	37	1.391	1.361				

‡ Dimension at Ondrives.US option

Continued on next page

3GT**3GT TIMING PULLEY STOCK****3GT**

3mm Pitch (.1181 inch)

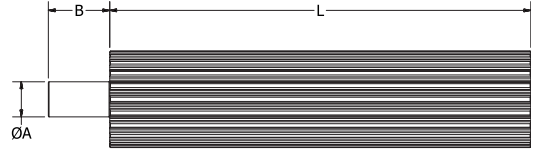
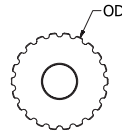
.1181 Circular Pitch
Material - Aluminum

OD Tolerance:

38 to 52 Grooves +.003/-.000

54 to 100 Grooves +.004/-.000

110 to 160 Grooves +.005/-.000

Dimensions in inches
Continued from previous page

Part Number	No. of Grooves	Pitch Diameter	OD	Usable Length (L)	Journal Diameter (A)	Journal Length (B)
3GT-8PA-038	38	1.429	1.399	8	1/2	3/4 to 1 ‡
3GT-8PA-039	39	1.466	1.436			
3GT-8PA-040	40	1.504	1.474			
3GT-8PA-042	42	1.579	1.549			
3GT-8PA-044	44	1.654	1.624			
3GT-8PA-045	45	1.692	1.662			
3GT-8PA-048	48	1.805	1.775			
3GT-8PA-050	50	1.880	1.850			
3GT-8PA-052	52	1.955	1.925			
3GT-8PA-054	54	2.030	2.000			
3GT-8PA-056	56	2.105	2.075			
3GT-8PA-060	60	2.256	2.226			
3GT-8PA-062	62	2.331	2.301			
3GT-8PA-064	64	2.406	2.376			
3GT-8PA-066	66	2.481	2.451			
3GT-8PA-068	68	2.557	2.527			
3GT-8PA-070	70	2.632	2.602			
3GT-8PA-072	72	2.707	2.677			
3GT-8PA-075	75	2.820	2.790			
3GT-8PA-080	80	3.008	2.978			
3GT-8PA-090	90	3.384	3.354			
3GT-8PA-100	100	3.760	3.730			
3GT-8PA-110	110	4.136	4.106			
3GT-8PA-120	120	4.511	4.481			
3GT-8PA-130	130	4.887	4.857			
3GT-8PA-140	140	5.263	5.233			
3GT-8PA-150	150	5.639	5.609			
3GT-8PA-160	160	6.015	5.985			

‡ Dimension at Ondrives.US option

5GT**GT®2 TIMING PULLEY STOCK****5GT**

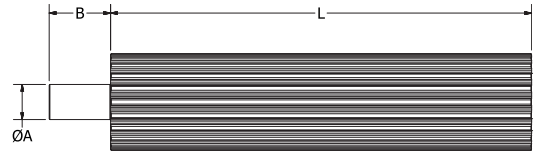
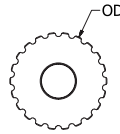
5mm Pitch (.1969 inch)

.1969 Circular Pitch
Material - Aluminum

OD Tolerance:

Up to 16 Grooves +.002/-.000

17 to 32 Grooves +.003/-.000



Dimensions in inches

Part Number	No. of Grooves	Pitch Diameter	OD	Usable Length (L)	Journal Diameter (A)	Journal Length (B)	
5GT-6PA-012	12	.752	.707	6	1/2	7/8	
5GT-6PA-013	13	.815	.770				
5GT-7PA-014	14	.877	.832	7		3/4 to 1 ‡	
5GT-7PA-015	15	.940	.895				
5GT-7PA-016	16	1.003	.958				
5GT-7PA-017	17	1.065	1.020	8			1/2 to 3/4 ‡
5GT-8PA-018	18	1.128	1.083				
5GT-8PA-019	19	1.191	1.146				
5GT-8PA-020	20	1.253	1.208				
5GT-8PA-021	21	1.316	1.271				
5GT-8PA-022	22	1.379	1.334				
5GT-8PA-023	23	1.441	1.396				
5GT-8PA-024	24	1.504	1.459				
5GT-8PA-025	25	1.566	1.521				
5GT-8PA-026	26	1.629	1.584				
5GT-8PA-027	27	1.692	1.647				
5GT-8PA-028	28	1.754	1.709				
5GT-8PA-029	29	1.817	1.772				
5GT-8PA-030	30	1.880	1.835				
5GT-8PA-031	31	1.942	1.897				
5GT-8PA-032	32	2.005	1.960				

‡ Dimension at Ondrives.US option

Continued on next page

5GT**GT®2 TIMING PULLEY STOCK****5GT**

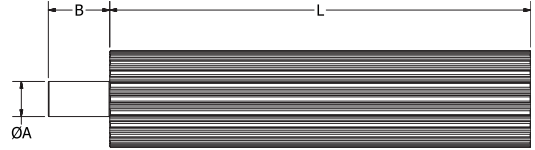
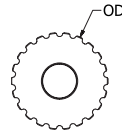
5mm Pitch (.1969 inch)

.1969 Circular Pitch
Material - Aluminum

OD Tolerance:

33 to 62 Grooves +.004/-.000

65 to 90 Grooves +.005/-.000

Dimensions in inches
Continued from previous page

Part Number	No. of Grooves	Pitch Diameter	OD	Usable Length (L)	Journal Diameter (A)	Journal Length (B)
5GT-8PA-033	33	2.068	2.023	8	1/2 to 3/4 ‡	3/4 to 1 ‡
5GT-8PA-034	34	2.130	2.085			
5GT-8PA-035	35	2.193	2.148			
5GT-8PA-036	36	2.256	2.211			
5GT-8PA-038	38	2.381	2.336		3/4	11/16 to 1 ‡
5GT-8PA-040	40	2.506	2.461			
5GT-8PA-042	42	2.632	2.587			
5GT-8PA-044	44	2.757	2.712			
5GT-8PA-045	45	2.820	2.775		3/4 to 1 ‡	
5GT-8PA-046	46	2.882	2.837			
5GT-8PA-048	48	3.008	2.963			
5GT-8PA-050	50	3.133	3.088			
5GT-8PA-054	54	3.384	3.339		1	1
5GT-8PA-056	56	3.509	3.464			
5GT-8PA-060	60	3.760	3.715			
5GT-8PA-062	62	3.885	3.840			
5GT-8PA-065	65	4.073	4.028			
5GT-8PA-072	72	4.511	4.466			
5GT-8PA-080	80	5.013	4.968			
5GT-8PA-090	90	5.639	5.594			

‡ Dimension at Ondrives.US option

Continued on next page

5GT**GT®2 TIMING PULLEY STOCK****5GT**

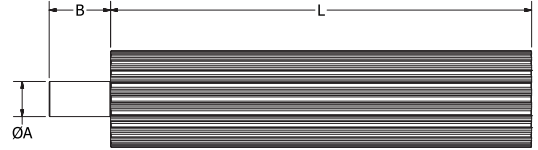
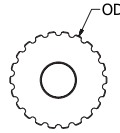
5mm Pitch (.1969 inch)

.1969 Circular Pitch
Material - Steel

OD Tolerance:

Up to 16 Grooves +.002/-.000

17 to 32 Grooves +.003/-.000

Dimensions in inches
Continued from previous page

Part Number	No. of Grooves	Pitch Diameter	OD	Usable Length (L)	Journal Diameter (A)	Journal Length (B)
5GT-6PS-012	12	.752	.707	6	1/2	7/8
5GT-6PS-013	13	.815	.770			
5GT-7PS-014	14	.877	.832	7		3/4 to 1 ‡
5GT-7PS-015	15	.940	.895			
5GT-7PS-016	16	1.003	.958			
5GT-7PS-017	17	1.065	1.020	8		
5GT-8PS-018	18	1.128	1.083			
5GT-8PS-019	19	1.191	1.146			
5GT-8PS-020	20	1.253	1.208			
5GT-8PS-021	21	1.316	1.271			
5GT-8PS-022	22	1.379	1.334			
5GT-8PS-023	23	1.441	1.396			
5GT-8PS-024	24	1.504	1.459			
5GT-8PS-025	25	1.566	1.521			
5GT-8PS-026	26	1.629	1.584			
5GT-8PS-027	27	1.692	1.647			
5GT-8PS-028	28	1.754	1.709			
5GT-8PS-029	29	1.817	1.772			
5GT-8PS-030	30	1.880	1.835			
5GT-8PS-031	31	1.942	1.897	3/4	11/16 to 1 ‡	
5GT-8PS-032	32	2.005	1.960			

‡ Dimension at Ondrives.US option

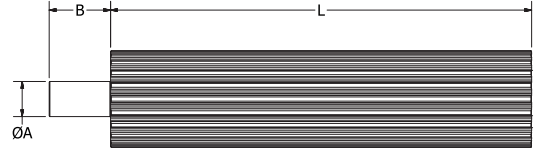
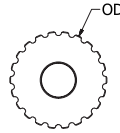
Continued on next page

5GT**5GT TIMING PULLEY STOCK****5GT**

5mm Pitch (.1969 mm)

.1969 Circular Pitch
Material - Steel

OD Tolerance:

33 to 62 Grooves +.004/-.000
65 to 112 Grooves +.005/-.000
126 Grooves +.006/-.000Dimensions in inches
Continued from previous page

Part Number	No. of Grooves	Pitch Diameter	OD	Usable Length (L)	Journal Diameter (A)	Journal Length (B)
5GT-8PS-033	33	2.068	2.023	8	3/4	11/16 to 1 ‡
5GT-8PS-034	34	2.130	2.085			
5GT-8PS-035	35	2.193	2.148			
5GT-8PS-036	36	2.256	2.211			
5GT-8PS-038	38	2.381	2.336			
5GT-8PS-040	40	2.506	2.461			
5GT-8PS-042	42	2.632	2.587			
5GT-8PS-044	44	2.757	2.712			
5GT-8PS-045	45	2.820	2.775			
5GT-8PS-046	46	2.882	2.837			
5GT-8PS-048	48	3.008	2.963			
5GT-8PS-050	50	3.133	3.088			
5GT-8PS-054	54	3.384	3.339			
5GT-8PS-056	56	3.509	3.464			
5GT-8PS-060	60	3.760	3.715			
5GT-8PS-062	62	3.885	3.840			
5GT-8PS-065	65	4.073	4.028			
5GT-8PS-072	72	4.511	4.466			
5GT-8PS-080	80	5.013	4.968			
5GT-8PS-090	90	5.639	5.594			
5GT-8PS-100	100	6.266	6.221			
5GT-6PS-112	112	7.018	6.973	6	1	1
5GT-6PS-126	126	7.895	7.850			

‡ Dimension at Ondrives.US option