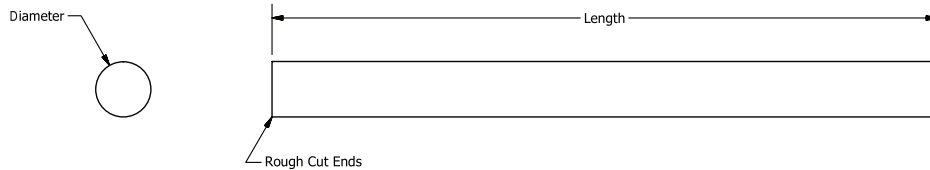
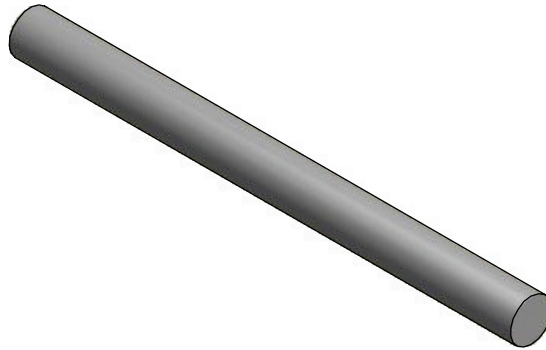


GS
INCH

Precision Ground Shafting

303 Stainless Steel

12"-24"-36" and 600 - 900mm Lengths



- + Precision ground 303 Stainless Steel
- + Toleranced for ball bearings, available in inch and metric sizes
- + Perfect for use with: ball bearings, pulleys, couplings, gears, any rotating components
- + From stock delivery
- + Other materials available
- + Special sizes are available please ask
- + Customizing: grooves, journals, flats, drill holes, thread + tapped holes, chamfers, special diameters, special lengths

GS
INCH

Precision Ground Shafting

303 Stainless Steel 12"-24"-36" Lengths

These shafts are ideal for use with:

- Ball bearings
- Pulleys
- Couplings
- Gears
- Any rotating component

Customizing is available

- Grooves
- Journals
- Flats
- Drill holes
- Chamfers
- Special lengths

Special sizes are available please ask

Nominal Dia. (Ref)	Diameter (In.)	±1/8" Length	Part Number
1/32	.0313 -.0002	12"	GS0313-120SC
	.0317 -.0002		GS0317-120SC
3/64	.0467 -.0002		GS0467-120SC
1/16	.0548 -.0002		GS0548-120SC
	.0622 -.0002		GS0622-120SC
	.0626 -.0002		GS0626-120SC
5/64	.0630 -.0002		GS0630-120SC
	.0778 -.0002		GS0778-120SC
	.0781 -.0002		GS0781-120SC
3/32	.0786 -.0002		GS0786-120SC
	.0934 -.0002		GS0934-120SC
1/8	.0938 -.0002		GS0938-120SC
	.0942 -.0002	GS0942-120SC	
1/8	.1251 -.0002	GS1251-120SC	
	.1247 -.0002	GS1247-240SC	
	.1250 -.0002	GS1250-240SC	
	.1251 -.0002	GS1251-240SC	
5/32	.1255 -.0002	GS1255-240SC	
	.1559 -.0002	GS1559-240SC	
	.1562 -.0002	GS1562-240SC	
3/16	.1567 -.0002	GS1567-240SC	
	.1872 -.0002	GS1872-240SC	
	.1875 -.0002	GS1875-240SC	
7/32	.1880 -.0002	GS1880-240SC	
	.2184 -.0002	GS2184-240SC	
	.2187 -.0002	GS2187-240SC	
1/4	.2192 -.0002	GS2192-240SC	
	.2497 -.0002	GS2497-240SC	
5/16	.2500 -.0002	GS2500-240SC	
	.3122 -.0002	GS3122-240SC	
	.3125 -.0002	GS3125-240SC	
	.3130 -.0002	GS3130-240SC	

GS
INCH

Precision Ground Shafting

303 Stainless Steel 12"-24"-36" Lengths

These shafts are ideal for use with:

- Ball bearings
- Pulleys
- Couplings
- Gears
- Any rotating component

Customizing is available

- Grooves
- Journals
- Flats
- Drill holes
- Chamfers
- Special lengths

Special sizes are available please ask

Nominal Dia. (Ref)	Diameter (In.)	±1/8" Length	Part Number
1/4	.2490 -.0003	36"	GS2490-360SC
	.2495 -.0003		GS2495-360SC
	.2497 -.0002		GS2497-360SC
	.2500 -.0002		GS2500-360SC
	.2505 -.0002		GS2505-360SC
3/8	.3740 -.0003		GS3740-360SC
	.3745 -.0003		GS3745-360SC
	.3747 -.0002		GS3747-360SC
	.3750 -.0002		GS3750-360SC
	.3755 -.0002		GS3755-360SC
1/2	.4990 -.0005		GS4990-360SC
	.4995 -.0005		GS4995-360SC
	.4997 -.0002		GS4997-360SC
	.5000 -.0002		GS5000-360SC
	.5005 -.0002		GS5005-360SC
5/8	.6247 -.0004		GS6247-360SC
	.6250 -.0004		GS6250-360SC
	.6255 -.0004		GS6255-360SC
3/4	.7490 -.0005		GS7490-360SC
	.7495 -.0005		GS7495-360SC
	.7497 -.0004	GS7497-360SC	
	.7500 -.0004	GS7500-360SC	
	.7505 -.0004	GS7505-360SC	
1"	.9990 -.0005	GS9990-360SC	
	.9995 -.0005	GS9995-360SC	
	.9997 -.0004	GS9997-360SC	
	1.0000 -.0004	GS10000-360SC	
	1.0005 -.0004	GS10005-360SC	
1-1/4	1.2490 -.0005	GS12490-360SC	
	1.2495 -.0005	GS12495-360SC	
	1.2497 -.0004	GS12497-360SC	

See next page for metric

Precision Ground Shafting

303 Stainless Steel 600 - 900mm Lengths

These shafts are ideal for use with:

- Ball bearings
- Pulleys
- Couplings
- Gears
- Any rotating component

Customizing is available

- Grooves
- Journals
- Flats
- Drill holes
- Chamfers
- Special lengths

Special sizes are available please ask

Nominal Dia. (Ref)	Diameter (In.)		±3mm Length	Part Number
3mm	2.992	-0,005	600mm	GSM2.992-600SC
	3.000	-0,005		GSM3.000-600SC
	3.003	-0,005		GSM3.003-600SC
4mm	3.992	-0,005		GSM3.992-600SC
	3.999	-0,005		GSM3.999-600SC
5mm	4.992	-0,005		GSM4.992-600SC
	5.000	-0,005		GSM5.000-600SC
6mm	5.993	-0,005		GSM5.993-600SC
	6.000	-0,005		GSM6.000-600SC
7mm	6.992	-0,005		GSM6.992-600SC
	7.000	-0,005		GSM7.000-600SC
8mm	7.993	-0,005		GSM7.993-600SC
	8.000	-0,005	GSM8.000-600SC	
5mm	4.991	-0,005	900mm	GSM4.991-900SC
	5.000	-0,005		GSM5.000-900SC
6mm	5.992	-0,005		GSM5.992-900SC
	6.000	-0,005		GSM6.000-900SC
7mm	6.992	-0,005		GSM6.992-900SC
	7.000	-0,005		GSM7.000-900SC
8mm	7.993	-0,005		GSM7.993-900SC
	8.000	-0,005		GSM8.000-900SC
9mm	8.992	-0,005		GSM8.992-900SC
	9.000	-0,005		GSM9.000-900SC
10mm	9.992	-0,005		GSM9.992-900SC
	10.000	-0,005		GSM10.000-900SC
12mm	11.991	-0,005		GSM11.991-900SC
	12.000	-0,005		GSM12.000-900SC
13mm	12.993	-0,005		GSM12.993-900SC
	13.000	-0,005		GSM13.000-900SC
14mm	13.993	-0,005		GSM13.993-900SC
	14.000	-0,005		GSM14.000-900SC
15mm	14.992	-0,005		GSM14.992-900SC
	15.000	-0,005		GSM15.000-900SC
16mm	15.994	-0,005		GSM15.994-900SC
	16.000	-0,008		GSM16.000-900SC
20mm	19.992	-0,008		GSM19.992-900SC
	20.000	-0,008		GSM20.000-900SC
25mm	24.993	-0,008	GSM24.993-900SC	
	25.000	-0,008	GSM25.000-900SC	
30mm	29.992	-0,008	GSM29.992-900SC	
	30.000	-0,008	GSM30.000-900SC	