

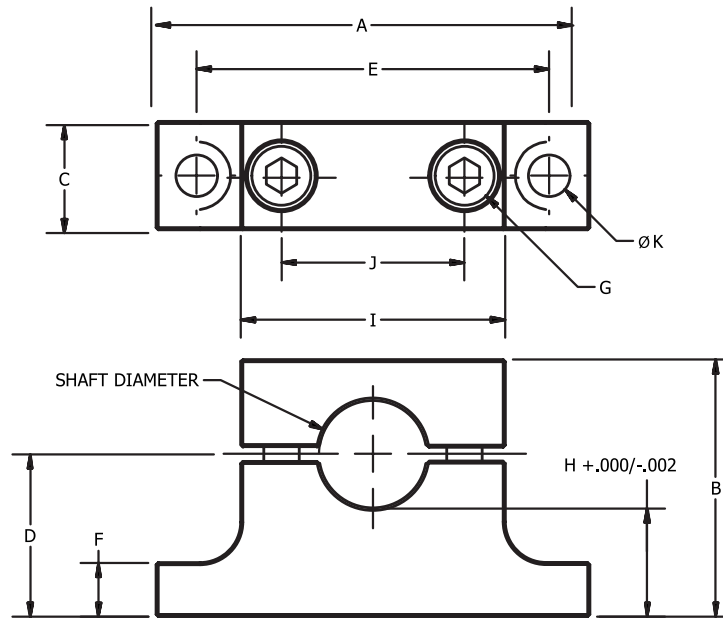
LPBS-M

COMPONENTS

Easy-Access™ 304 Stainless Steel Shaft Supports

Low Profile, Top Loading

LPBS-M



All dimensions are in millimeters

| Part Number | Shaft Dia. | A | B | C | D | E | F | G | H | I | J | K | Weight (lb) |
|-------------|------------|-----|----|----|----|----|----|----|------|----|----|-----|-------------|
| LPBS-08M | 8 | 44 | 21 | 10 | 12 | 35 | 5 | M4 | 8.0 | 26 | 16 | 4.5 | 0.084 |
| LPBS-10M | 10 | 46 | 25 | 12 | 14 | 38 | 5 | M4 | 9.0 | 28 | 18 | 4.5 | 0.130 |
| LPBS-12M | 12 | 48 | 25 | 12 | 14 | 40 | 5 | M4 | 8.0 | 30 | 20 | 4.5 | 0.133 |
| LPBS-16M | 16 | 62 | 31 | 13 | 18 | 50 | 6 | M5 | 10.0 | 38 | 26 | 5.5 | 0.224 |
| LPBS-20M | 20 | 65 | 36 | 13 | 22 | 54 | 8 | M5 | 12.0 | 42 | 30 | 5.5 | 0.278 |
| LPBS-25M | 25 | 80 | 44 | 19 | 27 | 66 | 8 | M6 | 14.5 | 52 | 38 | 6.6 | 0.606 |
| LPBS-30M | 30 | 96 | 52 | 19 | 32 | 78 | 10 | M8 | 17.0 | 62 | 44 | 9 | 0.801 |
| LPBS-40M | 40 | 108 | 66 | 19 | 40 | 90 | 12 | M8 | 20.0 | 72 | 55 | 9 | 1.122 |

Materials: 304 Stainless Steel
Fasteners: 18-8 Stainless Steel

Lowest profile available
Easily customizable

ROHS compliant

The unique removable top design of this shaft support allows the user to easily remove the shafts, linear bearings and carriage without upsetting the position of the shaft support. This eliminates the need to reset the critical parallel alignment required in many linear shaft systems.

Available shaft diameters from 8mm to 40mm

Maintains alignment while servicing shafts and bearings

Customs available (bore size, bore shape, material)

Parallel and perpendicular surfaces for easy alignment

Superior shaft holding strength

Lowest base to shaft height available

| Easy-Access™ Shaft Supports | Common Shaft Supports |
|-----------------------------------|-----------------------------|
|-----------------------------------|-----------------------------|

✓ ✓

✓ ✗

✓ ✗

✓ ✗

✓ ✗

✓ ✗

ondrives.us

1-888-260-7466
516-771-6444

sales@ondrivesus.com
www.ondrivesus.com