

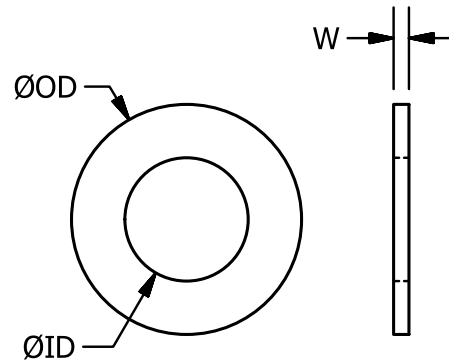
TBW

COMPONENTS

TBW

Thrust Washers

Metric



All dimensions in millimeters

Carbon Steel Washer	Stainless Steel Washer	ID	OD	W
TBW-04C	TBW-04S	4.01 +0.05/-0	9.04 +0/-0.10	1.27 ±0.05
TBW-05C	TBW-05S	5.08 +0.13/-0	11.96 +0/-0.18	1.27 ±0.05
TBW-06C	TBW-06S	6.07 +0.13/-0	13.97 +0/-0.18	1.27 ±0.05
TBW-07C	TBW-07S	7.06 +0.12/-0	16.97 +0/-0.18	1.27 ±0.05
TBW-08C	TBW-08S	8.08 +0.12/-0	15.96 +0/-0.16	1.27 ±0.05
TBW-10C	TBW-10S	10.06 +0.13/-0	20.96 +0/-0.18	1.57 ±0.06
TBW-12C	TBW-12S	12.06 +0.13/-0	23.98 +0/-0.18	1.57 ±0.06
TBW-16C	TBW-16S	16.07 +0.19/-0	27.97 +0/-0.23	2.36 ±0.08
TBW-19C	TBW-19S	19.08 +0.17/-0	31.98 +0/-0.23	2.36 ±0.08
TBW-25C	TBW-25S	25.07 +0.23/-0	40.97 +0/-0.28	3.18 ±0.13
TBW-28C	TBW-28S	28.07 +0.23/-0	43.97 +0/-0.28	3.18 ±0.13

For bearing sets, including Ball + Ball Retainer, see Thrust Bearings

Carbon Steel Washer

Washer: CR 1075 steel heat treated to RC 59-61

Stainless Steel Washer

Washer: CR 410 stainless steel heat treated to RC 38-42

ondrives.us

☎ 1-888-260-7466
📄 516-771-6444

💻 sales@ondrivesus.com
🌐 www.ondrivesus.com