

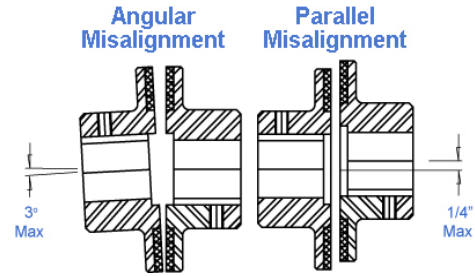
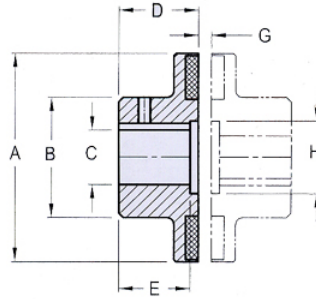
MDC

COUPLINGS

MDC

Magnetic Disc Couplings

Air Gap Coupling - No Mechanical Connection



Order 2 hubs of the same part number to make a complete coupling. Bore sizes can be different.

Part Number	HP @ 1750 RPM	Max Speed RPM	Torque NORMAL in.lbs	Torque PEAK in.lbs	OD A	HD B	Max Bore C	D	E	TYP. Gap G	H	Weight per hub † lb
MDC-27	0.03	42500	1.08	2	1.06	0.81	0.38	0.63	0.63	0.125	N/A	0.11
MDC-44	0.08	26000	4	5	1.72	0.81	0.38	0.59	0.59	0.19	N/A	0.22
MDC-50	0.17	23000	6	8	1.98	1.12	0.50	0.59	0.59	0.19	N/A	0.32
MDC-60	0.25	19000	9	12	2.36	1.50	0.63	0.75	0.75	0.19	N/A	0.58
MDC-73	0.45	15500	15	20	2.86	2.00	1.000	1.00	1.00	0.19	N/A	1.27
MDC-98	1.22	11700	44	48	3.84	2.75	1.375	1.00	1.00	0.19	N/A	2.20
MDC-107	2	10500	72	80	4.20	2.75	1.375	1.00	1.00	0.25	N/A	2.55
MDC-130	3	9000	108	120	5.10	3.00	1.625	1.50	1.25	0.25	2.06	4.39
MDC-145	10	7800	360	400	5.79	4.25	2.375	2.07	1.81	0.25	3.06	8.97
MDC-150	13	7800	470	540	5.79	2.37	1.500	1.64	1.25	0.25	1.88	7.12

Example of a complete part number: MDC-27-24 is a single hub, size 27 with a 1/4" bore.

† weight per hub includes magnets.

Coupler Size	Inch Bore Sizes																
	SOLID	1/8"	3/16"	1/4"	5/16"	3/8"	1/2"	5/8"	3/4"	7/8"	1"	1-1/8"	1-1/4"	1-3/8"	1-1/2"	1-5/8"	
MDC-27	•	•	•	•	•												
MDC-44	•		•	•	•	•											
MDC-50	•			•	•	•											
MDC-60	•					•	•	•	•								
MDC-73	•						•	•	•	•	•						
MDC-98	•						•	•	•	•	•	•					
MDC-107	•							•	•	•	•	•	•	•			
MDC-130	•								•	•	•	•	•	•	•	•	•
MDC-145	•										•						
MDC-150	•											•					
Bore Code	00	16	19	24	27	31	36	41	47	50	53	55	57	59	62	64	

Coupler Size	Metric Bore Sizes															
	SOLID	5	6	8	10	12	14	18	20	24	28	38	40	42	50	
MDC-27	•	•	•	•												
MDC-44	•	•	•	•	•	•										
MDC-50	•		•	•	•	•	•	•								
MDC-60	•				•	•	•	•								
MDC-73	•					•	•	•								
MDC-98	•						•		•	•						
MDC-107	•							•		•	•					
MDC-130	•								•	•	•	•	•		•	
MDC-145	•												•			•
MDC-150	•													•		
Bore Code	00	20	22	28	32	35	38	45	48	51	54	61	63	65	70	

Materials:

MDC-27 to MDC-98, 416 stainless hub with 303 stainless cover plate over the magnets. Supplied with 2 set screws @ 90 degrees

MDC-107 to MDC-150, 303 stainless hub and cover plate over the magnets.

MDC are bored to order and can be supplied with set screws and key-ways.