

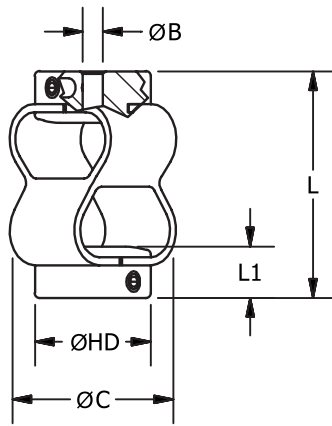
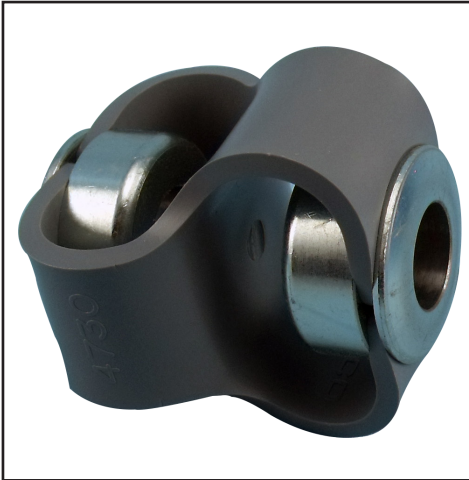
047
049

COUPLINGS

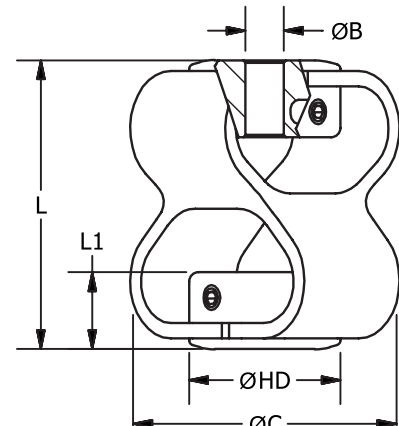
Double Loop Coupling

"K" Coupling

047
049



SIZE 10



SIZE 20,30,40

Part Number		Offset												
Steel zinc plated hubs	Stainless Steel hubs	Bores*		Max Torque (in-lb)		Max Ang.	Max Radial	Max Axial	Hub Dia HD	Clearance Dia. C	Length L	Hub Length L1	Set Screw	Mass (lb)
		Min	Max	(1)	(2)									
047.10	049.10	3mm	3/8"	4.43	7.08	10°	.10	.18	.17	1.06	1.06	.31	M3	0.055
047.20	049.20	6mm	1/2"	15.90	26.60	15°	.13	.30	.99	1.89	1.89	.50	M4	0.203
047.30	049.30	3/8"	16mm	44.30	70.80	15°	.13	.33	1.13	2.13	2.17	.63	M5	0.273
047.40	049.40	3/8"	16mm	88.50	159.30	15°	.13	.43	1.13	2.20	2.20	.63	M6	0.299

*Couplings with dissimilar bores are non-standard

(1) Torque at maximum displacement

(2) Torque at 1 degree angular, 2mm axial and 0.5mm radial misalignment

Size	Available Bores																
	Inch								Metric								
	1/8"	3/16"	1/4"	5/16"	3/8"	1/2"	5/8"	3	4	5	6	8	10	12	14	15	16
10
20
30
40
Code	16	19	24	27	31	36	41	14	18	20	22	28	32	35	38	40	42

High torsional rigidity

One piece design

Outstanding resistance to acids, alkalis,

solvents, oils, grease, ozone

High / Low temperature flexibility (-40°C to +100°C)

Damping of vibration and shock

Corrosion protection

Maximum speed 3000 rpm

Hubs: Zinc plated steel or 300 series Stainless

Double Loop: Hytrel™ trade mark of Dupont

Materials

Hubs: Zinc plated steel or 300 Series stainless steel

Flexible Center: Hytrel (trade mark of DuPont)

Temperature Range

-40°C to +100°C

Performance

High torsional rigidity.

One-piece design.

Outstanding chemical resistance to acids, alkalis, solvents, oils, grease, ozone.

High / Low temperature flexibility

Damping of vibration and shock

Corrosion Protection

Other bore sizes and combination bores on request