

500  
514

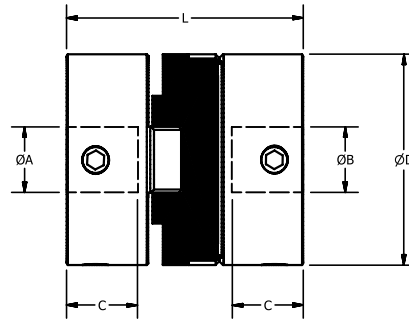
# COUPLINGS

500  
514

## Standard Oldham Zero Backlash

Aluminum Hubs - Set Screw Style

**Mechanical Fuse - Disc Will Break Allowing Hubs to Disconnect**



Standard Coupler

**Backlash-free up to 10<sup>8</sup> turns**  
**25%+ increased Torque option**  
**Large misalignment capability**

Std. Coupling	Peak Torque lb.in	Static Break Torque lb.in	ØD	Ang. Offset ±deg.	Max Radial Offset ±in.	Mass lb.*	Moment of inertia lb.in <sup>2</sup> x 10 <sup>-5</sup> *	Set Scr.	L	C	ØH	Max Bore
500.06	0.5	6	0.25	1	0.008	0.006	27	M3	0.5	0.15	0.25	1/8"
500.09	1.8	18	0.38	1	0.008	0.009	60	M3	0.5	0.15	0.38	5mm
514H13	4.4	35	0.50	1.5	0.008	0.024	90	M3	0.63	0.17	0.50	1/4"
514H19	15	71	0.75	1.5	0.016	0.029	200	M5	1.02	0.37	0.75	8mm
514H25	35	115	1.00	3	0.016	0.068	860	M5	1.28	0.46	1.00	1/2"
514H33	80	465	1.31	3	0.016	0.148	3870	M6	1.65	0.59	1.31	16mm
514H41	150	500	1.63	3	0.020	0.313	10850	M6	2.00	0.70	1.63	20mm
514H50	265	840	1.97	3	0.020	0.459	25780	M8	2.35	0.81	1.97	1"
514H57	390	1325	2.25	3	0.020	0.796	42370	M8	3.07	1.12	2.25	30mm

Size	Available Bores																											
	Inch														Metric													
	1/8	3/16	1/4	5/16	3/8	1/2	5/8	3/4	7/8	1"	1-1/8	2	3	4	5	6	8	9	10	12	14	15	16	20	24	25	30	
06	.											.	.															
09	.	.										.	.	.	.													
13	.	.	.									.	.	.	.													
19	.	.	.	.								.	.	.	.													
25			.	.	.	.						.	.	.	.													
33			.	.	.	.	.					.	.	.	.	.	.	.	.	.	.	.	.	.	.	.	.	
41			.	.	.	.	.	.				.	.	.	.	.	.	.	.	.	.	.	.	.	.	.	.	
50			.	.	.	.	.	.	.			.	.	.	.	.	.	.	.	.	.	.	.	.	.	.	.	
57			.	.	.	.	.	.	.	.		.	.	.	.	.	.	.	.	.	.	.	.	.	.	.	.	
Code	16	19	24	27	31	36	41	47	50	53	55	11	14	18	20	22	28	30	32	35	38	40	42	48	51	52	56	

**Coupling Part Number**

Consists of base number plus two bore codes  
 Add required bore codes to end of part number  
 eg, 516H25.2431 (bored 1/4" x 3/8")

**Materials**

**Hubs (size 06-13):** Brass (blind bores .15 deep)

**Hubs (size 19-57):** Aluminum 2011 T8

**Fasteners:** Alloy Steel, Black Oiled

**Disc:** Acetal (Black)

**Performance**

Max speed: 3000 RPM, Max Angular Offset (@ 3000 RPM) Operating temperature range -20 to +60 deg.C

**Additional Info**

Backlash Free. Parallel out of line compensation.  
 Lubrication free. Compact and detachable.  
 Angular, radial and axial flexibility. Isolates vibration and ab-sorbs shock. No corrosion. Non-Magnetic. Low Inertia. Resonance dampening.  
 Electrical isolation between shafts >3kw. Boring out service available at extra cost. Keyways available in 7mm and larger bore sizes.

\*Mass and Moment of Inertia for High Torque couplings is slightly higher.

**Service Factor**

Duty	Factor
Momentary	1
1 hr per day	2
3 hrs per day	4
6 hrs per day	6
12 hrs per day	8

Peak Torque, select a size where Peak Torque exceeds the application torque x service factor