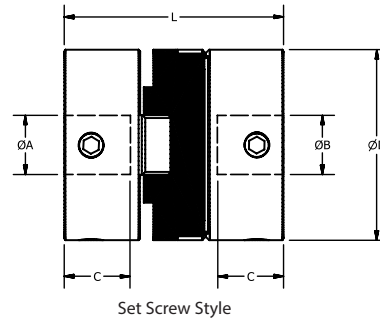


Standard Oldham Zero Backlash

Stainless Steel Hubs - Set Screw Style

Mechanical Fuse - Disc Will Break Allowing Hubs to Disconnect

Set Screw Style

Backlash-free up to 10⁸ turns
25%+ increased Torque option
Large misalignment capability

Slight torsional damping
Electrically isolating
Low inertia

Part Number	Max Bore ØB	ØD	L	C	Set Scr.	Ang. Offset ± deg.	Max Radial Offset ± in.	Static Break Torque lb.in	Peak Torque lb.in	Mass lb.	Moment of inertia lb.in ² x 10 ⁻⁵ *
864.13	.250"	0.50	0.63	0.21	M3	1.5	0.008	35	4.4	0.030	89
864.19	8mm	0.75	1.2	0.37	M4	3	0.016	70	15	0.100	750
864.25	12mm	1.00	1.28	0.46	M5	3	0.016	115	35	0.167	2003
864.33	16mm	1.31	1.65	0.60	M6	3	0.016	465	80	0.313	6335
864.41	20mm	1.63	2.00	0.70	M6	3	0.020	500	150	0.645	22268
864.50	1"	1.97	2.35	0.81	M8	3	0.020	840	265	1.125	57830

Size	Available Bores																							
	Inch										Metric													
	1/8	3/16	1/4	5/16	3/8	1/2	5/8	3/4	7/8	1"	3	4	5	6	8	9	10	12	14	15	16	20	24	25
13											
19											
25		
33			
41				
50				
CODE	16	19	24	27	31	36	41	47	50	53	14	18	20	22	28	30	32	35	38	40	42	48	51	52

Coupling Part Number

Consists of base number plus two bore codes
 Add required bore codes to end of part number
 eg, 864.25.2431 (bored 1/4" x 3/8")

Materials**Hubs:** Stainless Steel 303**Fasteners:** Stainless Steel 18-8**Disc:** Acetal (Black)**Performance**

Max speed: 3000 RPM, Max Angular Offset (@ 3000 RPM) Operating temperature range -20 to +60 deg.C

Additional Info

Backlash Free. Parallel out of line compensation.
 Lubrication free. Compact and detachable.
 Angular, radial and axial flexibility. Isolates vibration and ab-sorbs shock. No corrosion. Non-Magnetic. Low Inertia. Resonance dampening.
 Electrical isolation between shafts >3kw. Boring out service available at extra cost. Keyways available in 7mm and larger bore sizes.

*Mass and Moment of Inertia for High Torque couplings is slightly higher.

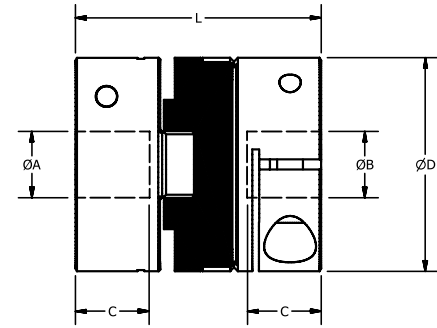
Service Factor

Duty	Factor
Momentary	1
1 hr per day	2
3 hrs per day	4
6 hrs per day	6
12 hrs per day	8

Peak Torque, select a size where Peak Torque exceeds the application torque x service factor

Standard Oldham Zero Backlash

Stainless Steel Hubs - Clamp Style

Mechanical Fuse - Disc Will Break Allowing Hubs to Disconnect

Clamp Style

Backlash-free up to 10^8 turns
 25%+ increased Torque option
 Large misalignment capability

Slight torsional damping
 Electrically isolating
 Low inertia

Part Number	Max Bore ØB	ØD	L	C	Cap Scr.	Ang. Offset ± deg.	Max Radial Offset ± in.	Static Break Torque lb.in	Peak Torque lb.in	Mass lb.	Moment of inertia lb.in ² x 10 ⁻⁵ *
Standard Torque											
Clamp											
866.19	8mm	0.75	1.2	0.37	M2.5	3	0.016	71	15	0.100	750
866.25	12mm	1.00	1.28	0.46	M3	3	0.016	115	35	0.167	2003
866.33	16mm	1.31	1.65	0.60	M4	3	0.016	465	80	0.313	6335
866.41	20mm	1.63	2.00	0.70	M4	3	0.020	500	150	0.645	22268
866.50	1"	1.97	2.35	0.81	M5	3	0.020	840	265	1.125	57830

Size	Available Bores																							
	Inch									Metric														
	3/16	1/4	5/16	3/8	1/2	5/8	3/4	7/8	1"	3	4	5	6	8	9	10	12	14	15	16	20	24	25	
19											
25								
33						
41						
50			
CODE	19	24	27	31	36	41	47	50	53	14	18	20	22	28	30	32	35	38	40	42	48	51	52	

Coupling Part Number

Consists of base number plus two bore codes
 Add required bore codes to end of part number
 eg, 864.25.2431 (bored 1/4" x 3/8")

Materials

Hubs: Stainless Steel 303

Fasteners: Stainless Steel 18-8

Disc: Acetal (Black)

Performance

Max speed: 3000 RPM, Max Angular Offset (@ 3000 RPM) Operating temperature range -20 to +60 deg.C

Additional Info

Backlash Free. Parallel out of line compensation.
 Lubrication free. Compact and detachable.
 Angular, radial and axial flexibility. Isolates vibration and ab-sorbs shock. No corrosion. Non-Magnetic. Low Inertia. Resonance dampening.
 Electrical isolation between shafts >3kw. Boring out service available at extra cost. Keyways available in 7mm and larger bore sizes.

*Mass and Moment of Inertia for High Torque couplings is slightly higher.

Service Factor

Duty	Factor
Momentary	1
1 hr per day	2
3 hrs per day	4
6 hrs per day	6
12 hrs per day	8

Peak Torque, select a size where Peak Torque exceeds the application torque x service factor