

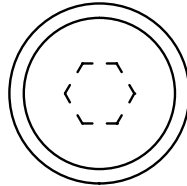
SH3  
SH4

# FASTENERS

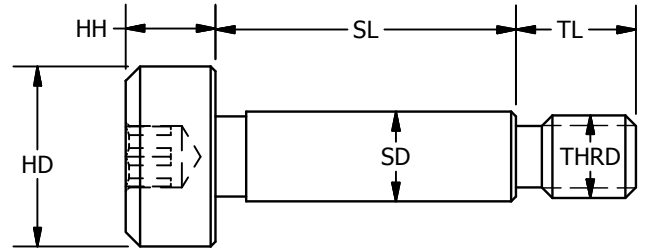
## Precision Shoulder Screws

Hex Socket Head - Inch Sizes

SH3  
SH4



Hex Socket Head



303 SS - Rockwell B83  
416 SS - Rockwell C26-32

| Part Number |           | -.001<br>SD | +.002<br>SL | ±.005<br>HD | ±.005<br>HH | TH    | ±.005<br>TL | HX   |
|-------------|-----------|-------------|-------------|-------------|-------------|-------|-------------|------|
| 303SS       | 416SS     |             |             |             |             |       |             |      |
| SH3-0909    | SH4-0909  | 0.0935      | 0.0943      | 3/16        | 3/32        | #2-56 | 1/8         | 1/16 |
| SH3-0912    | SH4-0912  | 0.0935      | 0.1255      | 3/16        | 3/32        | #2-56 | 1/8         | 1/16 |
| SH3-0918    | SH4-0918  | 0.0935      | 0.1880      | 3/16        | 3/32        | #2-56 | 1/8         | 1/16 |
| SH3-0925    | SH4-0925  | 0.0935      | 0.2505      | 3/16        | 3/32        | #2-56 | 1/8         | 1/16 |
| SH3-0931    | SH4-0931  | 0.0935      | 0.3130      | 3/16        | 3/32        | #2-56 | 1/8         | 1/16 |
| SH3-0937    | SH4-0937  | 0.0935      | 0.3755      | 3/16        | 3/32        | #2-56 | 1/8         | 1/16 |
| SH3-0950    | SH4-0950  | 0.0935      | 0.5005      | 3/16        | 3/32        | #2-56 | 1/8         | 1/16 |
| SH3-1212    | SH4-1212  | 0.1245      | 0.1255      | 1/4         | 1/8         | #4-40 | 5/32        | 5/64 |
| SH3-1218    | SH4-1218  | 0.1245      | 0.1880      | 1/4         | 1/8         | #4-40 | 5/32        | 5/64 |
| SH3-1225    | SH4-1225  | 0.1245      | 0.2505      | 1/4         | 1/8         | #4-40 | 5/32        | 5/64 |
| SH3-1231    | SH4-1231  | 0.1245      | 0.3130      | 1/4         | 1/8         | #4-40 | 5/32        | 5/64 |
| SH3-1237    | SH4-1237  | 0.1245      | 0.3755      | 1/4         | 1/8         | #4-40 | 5/32        | 5/64 |
| SH3-1250    | SH4-1250  | 0.1245      | 0.5005      | 1/4         | 1/8         | #4-40 | 5/32        | 5/64 |
| SH3-1262    | SH4-1262  | 0.1245      | 0.6255      | 1/4         | 1/8         | #4-40 | 5/32        | 5/64 |
| SH3-1275    | SH4-1275  | 0.1245      | 0.7505      | 1/4         | 1/8         | #4-40 | 5/32        | 5/64 |
| SH3-12100   | SH4-12100 | 0.1245      | 1.0005      | 1/4         | 1/8         | #4-40 | 5/32        | 5/64 |
| SH3-1512    | SH4-1512  | 0.1557      | 0.1255      | 9/32        | 1/8         | #6-32 | 3/16        | 3/32 |
| SH3-1518    | SH4-1518  | 0.1557      | 0.1880      | 9/32        | 1/8         | #6-32 | 3/16        | 3/32 |
| SH3-1525    | SH4-1525  | 0.1557      | 0.2505      | 9/32        | 1/8         | #6-32 | 3/16        | 3/32 |
| SH3-1531    | SH4-1531  | 0.1557      | 0.3130      | 9/32        | 1/8         | #6-32 | 3/16        | 3/32 |
| SH3-1537    | SH4-1537  | 0.1557      | 0.3755      | 9/32        | 1/8         | #6-32 | 3/16        | 3/32 |
| SH3-1543    | SH4-1543  | 0.1557      | 0.4380      | 9/32        | 1/8         | #6-32 | 3/16        | 3/32 |
| SH3-1550    | SH4-1550  | 0.1557      | 0.5005      | 9/32        | 1/8         | #6-32 | 3/16        | 3/32 |
| SH3-1562    | SH4-1562  | 0.1557      | 0.6255      | 9/32        | 1/8         | #6-32 | 3/16        | 3/32 |
| SH3-1575    | SH4-1575  | 0.1557      | 0.7505      | 9/32        | 1/8         | #6-32 | 3/16        | 3/32 |
| SH3-15100   | SH4-15100 | 0.1557      | 1.0005      | 9/32        | 1/8         | #6-32 | 3/16        | 3/32 |
| SH3-1812    | SH4-1812  | 0.1870      | 0.1255      | 5/16        | 5/32        | #8-32 | 3/16        | 3/32 |
| SH3-1815    | SH4-1815  | 0.1870      | 0.1565      | 5/16        | 5/32        | #8-32 | 3/16        | 3/32 |
| SH3-1818    | SH4-1818  | 0.1870      | 0.1880      | 5/16        | 5/32        | #8-32 | 3/16        | 3/32 |
| SH3-1825    | SH4-1825  | 0.1870      | 0.2505      | 5/16        | 5/32        | #8-32 | 3/16        | 3/32 |
| SH3-1831    | SH4-1831  | 0.1870      | 0.3130      | 5/16        | 5/32        | #8-32 | 3/16        | 3/32 |
| SH3-1837    | SH4-1837  | 0.1870      | 0.3755      | 5/16        | 5/32        | #8-32 | 3/16        | 3/32 |
| SH3-1843    | SH4-1843  | 0.1870      | 0.4380      | 5/16        | 5/32        | #8-32 | 3/16        | 3/32 |
| SH3-1850    | SH4-1850  | 0.1870      | 0.5005      | 5/16        | 5/32        | #8-32 | 3/16        | 3/32 |
| SH3-1862    | SH4-1862  | 0.1870      | 0.6255      | 5/16        | 5/32        | #8-32 | 3/16        | 3/32 |
| SH3-1875    | SH4-1875  | 0.1870      | 0.7505      | 5/16        | 5/32        | #8-32 | 3/16        | 3/32 |
| SH3-1887    | SH4-1887  | 0.1870      | 0.8755      | 5/16        | 5/32        | #8-32 | 3/16        | 3/32 |
| SH3-18100   | SH4-18100 | 0.1870      | 1.0005      | 5/16        | 5/32        | #8-32 | 3/16        | 3/32 |
| SH3-18125   | SH4-18125 | 0.1870      | 1.2505      | 5/16        | 5/32        | #8-32 | 3/16        | 3/32 |
| SH3-18137   | SH4-18137 | 0.1870      | 1.3755      | 5/16        | 5/32        | #8-32 | 3/16        | 3/32 |
| SH3-18150   | SH4-18150 | 0.1870      | 1.5005      | 5/16        | 5/32        | #8-32 | 3/16        | 3/32 |

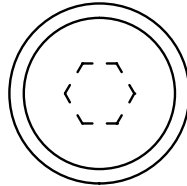
SH3  
SH4

# FASTENERS

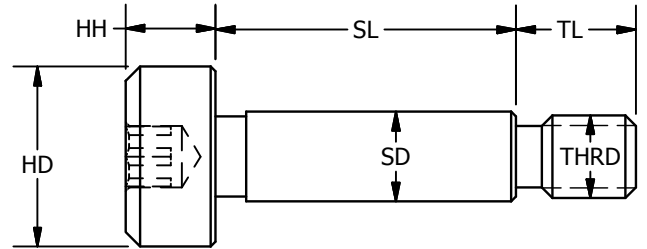
## Precision Shoulder Screws

Hex Socket Head - Inch Sizes

SH3  
SH4



Hex Socket Head



303 SS - Rockwell B83  
416 SS - Rockwell C26-32

| Part Number |           | -.001<br>SD | +.002<br>SL | +.005<br>HD | +.005<br>HH | TH      | +.005<br>TL | HX   |
|-------------|-----------|-------------|-------------|-------------|-------------|---------|-------------|------|
| 303SS       | 416SS     |             |             |             |             |         |             |      |
| SH3-2512    | SH4-2512  | 0.2495      | 0.1255      | 3/8         | 3/16        | #10-32  | 1/4         | 1/8  |
| SH3-2518    | SH4-2518  | 0.2495      | 0.1880      | 3/8         | 3/16        | #10-32  | 1/4         | 1/8  |
| SH3-2525    | SH4-2525  | 0.2495      | 0.2505      | 3/8         | 3/16        | #10-32  | 1/4         | 1/8  |
| SH3-2531    | SH4-2531  | 0.2495      | 0.3130      | 3/8         | 3/16        | #10-32  | 1/4         | 1/8  |
| SH3-2537    | SH4-2537  | 0.2495      | 0.3755      | 3/8         | 3/16        | #10-32  | 1/4         | 1/8  |
| SH3-2550    | SH4-2550  | 0.2495      | 0.5005      | 3/8         | 3/16        | #10-32  | 1/4         | 1/8  |
| SH3-2556    | SH4-2556  | 0.2495      | 0.5630      | 3/8         | 3/16        | #10-32  | 1/4         | 1/8  |
| SH3-2562    | SH4-2562  | 0.2495      | 0.6255      | 3/8         | 3/16        | #10-32  | 1/4         | 1/8  |
| SH3-2575    | SH4-2575  | 0.2495      | 0.7505      | 3/8         | 3/16        | #10-32  | 1/4         | 1/8  |
| SH3-2587    | SH4-2587  | 0.2495      | 0.8755      | 3/8         | 3/16        | #10-32  | 1/4         | 1/8  |
| SH3-2510    | SH4-2510  | 0.2495      | 1.0005      | 3/8         | 3/16        | #10-32  | 1/4         | 1/8  |
| SH3-25125   | SH4-25125 | 0.2495      | 1.2505      | 3/8         | 3/16        | #10-32  | 1/4         | 1/8  |
| SH3-25150   | SH4-25150 | 0.2495      | 1.5005      | 3/8         | 3/16        | #10-32  | 1/4         | 1/8  |
| SH3-3125    | SH4-3125  | 0.3120      | 0.2505      | 1/2         | 7/32        | 1/4-20  | 7/16        | 5/32 |
| SH3-3131    | SH4-3131  | 0.3120      | 0.3130      | 1/2         | 7/32        | 1/4-20  | 7/16        | 5/32 |
| SH3-3137    | SH4-3137  | 0.3120      | 0.3755      | 1/2         | 7/32        | 1/4-20  | 7/16        | 5/32 |
| SH3-3150    | SH4-3150  | 0.3120      | 0.5005      | 1/2         | 7/32        | 1/4-20  | 7/16        | 5/32 |
| SH3-3162    | SH4-3162  | 0.3120      | 0.6255      | 1/2         | 7/32        | 1/4-20  | 7/16        | 5/32 |
| SH3-3175    | SH4-3175  | 0.3120      | 0.7505      | 1/2         | 7/32        | 1/4-20  | 7/16        | 5/32 |
| SH3-3187    | SH4-3187  | 0.3120      | 0.8755      | 1/2         | 7/32        | 1/4-20  | 7/16        | 5/32 |
| SH3-31100   | SH4-31100 | 0.3120      | 1.0005      | 1/2         | 7/32        | 1/4-20  | 7/16        | 5/32 |
| SH3-3731A   | SH4-3731A | 0.3745      | 0.3130      | 1/2         | 7/32        | 1/4-20  | 7/16        | 5/32 |
| SH3-3737A   | SH4-3737A | 0.3745      | 0.3755      | 1/2         | 7/32        | 1/4-20  | 7/16        | 5/32 |
| SH3-3750A   | SH4-3750A | 0.3745      | 0.5005      | 1/2         | 7/32        | 1/4-20  | 7/16        | 5/32 |
| SH3-3762A   | SH4-3762A | 0.3745      | 0.6255      | 1/2         | 7/32        | 1/4-20  | 7/16        | 5/32 |
| SH3-3731    | SH4-3731  | 0.3745      | 0.3130      | 9/16        | 1/4         | 5/16-18 | 1/2         | 3/16 |
| SH3-3737    | SH4-3737  | 0.3745      | 0.3755      | 9/16        | 1/4         | 5/16-18 | 1/2         | 3/16 |
| SH3-3750    | SH4-3750  | 0.3745      | 0.5005      | 9/16        | 1/4         | 5/16-18 | 1/2         | 3/16 |
| SH3-3762    | SH4-3762  | 0.3745      | 0.6255      | 9/16        | 1/4         | 5/16-18 | 1/2         | 3/16 |
| SH3-3775    | SH4-3775  | 0.3745      | 0.7505      | 9/16        | 1/4         | 5/16-18 | 1/2         | 3/16 |
| SH3-37100   | SH4-37100 | 0.3745      | 1.0005      | 9/16        | 1/4         | 5/16-18 | 1/2         | 3/16 |
| SH3-37125   | SH4-37125 | 0.3745      | 1.2505      | 9/16        | 1/4         | 5/16-18 | 1/2         | 3/16 |
| SH3-37150   | SH4-37150 | 0.3745      | 1.5005      | 9/16        | 1/4         | 5/16-18 | 1/2         | 3/16 |
| SH3-5031    | SH4-5031  | 0.4995      | 0.3130      | 3/4         | 5/16        | 3/8-16  | 5/8         | 1/4  |
| SH3-5050    | SH4-5050  | 0.4995      | 0.5005      | 3/4         | 5/16        | 3/8-16  | 5/8         | 1/4  |
| SH3-5062    | SH4-5062  | 0.4995      | 0.6255      | 3/4         | 5/16        | 3/8-16  | 5/8         | 1/4  |
| SH3-5075    | SH4-5075  | 0.4995      | 0.7505      | 3/4         | 5/16        | 3/8-16  | 5/8         | 1/4  |
| SH3-50100   | SH4-50100 | 0.4995      | 1.0005      | 3/4         | 5/16        | 3/8-16  | 5/8         | 1/4  |

Specials made to order

Phillips Head Available on Request