

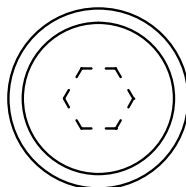
**SHM3**  
**SHM4**

# FASTENERS

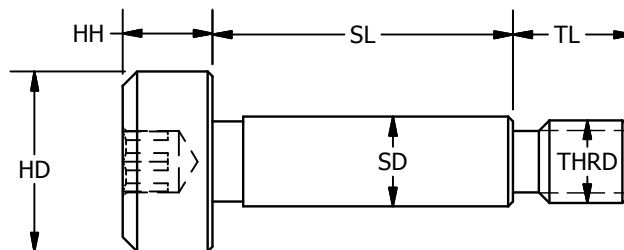
## Precision Shoulder Screws

Hex Socket Head - Metric Sizes

**SHM3**  
**SHM4**



Hex Socket Head



303 SS - Rockwell B83  
416 SS - Rockwell C26-32

Part Number		-.025 SD	+.050 SL	±.127 HD	±.127 HH	TH	TL	HX
303SS	416SS							
SHM3-43	SHM4-43	3.987	3.013	6	3	M3x0.5	4	2
SHM3-44	SHM4-44	3.987	4.013	6	3	M3x0.5	4	2
SHM3-45	SHM4-45	3.987	5.013	6	3	M3x0.5	4	2
SHM3-46	SHM4-46	3.987	6.013	6	3	M3x0.5	4	2
SHM3-47	SHM4-47	3.987	7.013	6	3	M3x0.5	4	2
SHM3-48	SHM4-48	3.987	8.013	6	3	M3x0.5	4	2
SHM3-410	SHM4-410	3.987	10.013	6	3	M3x0.5	4	2
SHM3-412	SHM4-412	3.987	12.013	6	3	M3x0.5	4	2
SHM3-416	SHM4-416	3.987	16.013	6	3	M3x0.5	4	2
SHM3-420	SHM4-420	3.987	20.013	6	3	M3x0.5	4	2
SHM3-425	SHM4-425	3.987	25.013	6	3	M3x0.5	4	2
SHM3-430	SHM4-430	3.987	30.013	6	3	M3x0.5	4	2
SHM3-54	SHM4-54	4.987	4.013	8	4	M4x0.7	5	2.5
SHM3-55	SHM4-55	4.987	5.013	8	4	M4x0.7	5	2.5
SHM3-56	SHM4-56	4.987	6.013	8	4	M4x0.7	5	2.5
SHM3-57	SHM4-57	4.987	7.013	8	4	M4x0.7	5	2.5
SHM3-58	SHM4-58	4.987	8.013	8	4	M4x0.7	5	2.5
SHM3-59	SHM4-59	4.987	9.013	8	4	M4x0.7	5	2.5
SHM3-510	SHM4-510	4.987	10.013	8	4	M4x0.7	5	2.5
SHM3-512	SHM4-512	4.987	12.013	8	4	M4x0.7	5	2.5
SHM3-514	SHM4-514	4.987	14.013	8	4	M4x0.7	5	2.5
SHM3-516	SHM4-516	4.987	16.013	8	4	M4x0.7	5	2.5
SHM3-520	SHM4-520	4.987	20.013	8	4	M4x0.7	5	2.5
SHM3-521	SHM4-521	4.987	21.013	8	4	M4x0.7	5	2.5
SHM3-525	SHM4-525	4.987	25.013	8	4	M4x0.7	5	2.5
SHM3-526	SHM4-526	4.987	26.013	8	4	M4x0.7	5	2.5
SHM3-530	SHM4-530	4.987	30.013	8	4	M4x0.7	5	2.5
SHM3-64	SHM4-64	5.987	4.013	10	5	M5x0.8	6	3
SHM3-65	SHM4-65	5.987	5.013	10	5	M5x0.8	6	3
SHM3-66	SHM4-66	5.987	6.013	10	5	M5x0.8	6	3
SHM3-68	SHM4-68	5.987	8.013	10	5	M5x0.8	6	3
SHM3-69	SHM4-69	5.987	9.013	10	5	M5x0.8	6	3
SHM3-610	SHM4-610	5.987	10.013	10	5	M5x0.8	6	3
SHM3-612	SHM4-612	5.987	12.013	10	5	M5x0.8	6	3
SHM3-614	SHM4-614	5.987	14.013	10	5	M5x0.8	6	3
SHM3-615	SHM4-615	5.987	15.013	10	5	M5x0.8	6	3
SHM3-616	SHM4-616	5.987	16.013	10	5	M5x0.8	6	3
SHM3-620	SHM4-620	5.987	20.013	10	5	M5x0.8	6	3
SHM3-625	SHM4-625	5.987	25.013	10	5	M5x0.8	6	3
SHM3-630	SHM4-630	5.987	30.013	10	5	M5x0.8	6	3

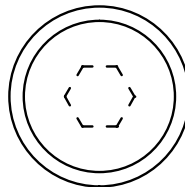
**SHM3**  
**SHM4**

# FASTENERS

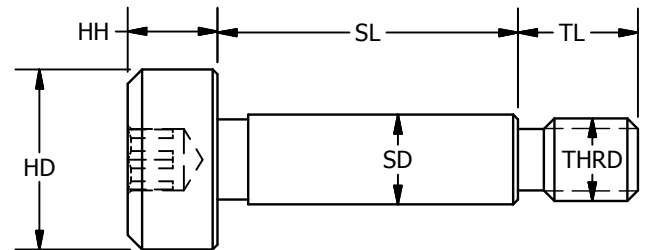
## Precision Shoulder Screws

Hex Socket Head - Metric Sizes

**SHM3**  
**SHM4**



Hex Socket Head



303 SS - Rockwell B83  
416 SS - Rockwell C26-32

Part Number		-.025 SD	+.050 SL	±.127 HD	±.127 HH	TH	TL	HX
303SS	416SS							
SHM3-86	SHM4-86	7.987	6.013	12	6	M6x1	11	4
SHM3-88	SHM4-88	7.987	8.013	12	6	M6x1	11	4
SHM3-810	SHM4-810	7.987	10.013	12	6	M6x1	11	4
SHM3-812	SHM4-812	7.987	12.013	12	6	M6x1	11	4
SHM3-814	SHM4-814	7.987	14.013	12	6	M6x1	11	4
SHM3-816	SHM4-816	7.987	16.013	12	6	M6x1	11	4
SHM3-820	SHM4-820	7.987	20.013	12	6	M6x1	11	4
SHM3-825	SHM4-825	7.987	25.013	12	6	M6x1	11	4
SHM3-830	SHM4-830	7.987	30.013	12	6	M6x1	11	4
SHM3-840	SHM4-840	7.987	40.013	12	6	M6x1	11	4
SHM3-860	SHM4-860	7.987	60.013	12	6	M6x1	11	4
SHM3-104A	SHM4-104A	9.987	4.013	12	6	M6x1	11	4
SHM3-108A	SHM4-108A	9.987	8.013	12	6	M6x1	11	4
SHM3-1010A	SHM4-1010A	9.987	10.013	12	6	M6x1	11	4
SHM3-1012A	SHM4-1012A	9.987	12.013	12	6	M6x1	11	4
SHM3-1016A	SHM4-1016A	9.987	16.013	12	6	M6x1	11	4
SHM3-105	SHM4-105	9.987	5.013	14	7	M8x1.25	12	5
SHM3-108	SHM4-108	9.987	8.013	14	7	M8x1.25	12	5
SHM3-109	SHM4-109	9.987	9.013	14	7	M8x1.25	12	5
SHM3-1010	SHM4-1010	9.987	10.013	14	7	M8x1.25	12	5
SHM3-1012	SHM4-1012	9.987	12.013	14	7	M8x1.25	12	5
SHM3-1013	SHM4-1013	9.987	13.013	14	7	M8x1.25	12	5
SHM3-1016	SHM4-1016	9.987	16.013	14	7	M8x1.25	12	5
SHM3-1020	SHM4-1020	9.987	20.013	14	7	M8x1.25	12	5
SHM3-1025	SHM4-1025	9.987	25.013	14	7	M8x1.25	12	5
SHM3-1030	SHM4-1030	9.987	30.013	14	7	M8x1.25	12	5
SHM3-1040	SHM4-1040	9.987	40.013	14	7	M8x1.25	12	5
SHM3-1045	SHM4-1045	9.987	45.013	14	7	M8x1.25	12	5
SHM3-1060	SHM4-1060	9.987	60.013	14	7	M8x1.25	12	5
SHM3-1080	SHM4-1080	9.987	80.013	14	7	M8x1.25	12	5
SHM3-1090	SHM4-1090	9.987	90.013	14	7	M8x1.25	12	5
SHM3-1210	SHM4-1210	11.987	10.013	20	8	M10x1.5	16	6
SHM3-1212	SHM4-1212	11.987	12.013	20	8	M10x1.5	16	6
SHM3-1216	SHM4-1216	11.987	16.013	20	8	M10x1.5	16	6
SHM3-1217	SHM4-1217	11.987	17.013	20	8	M10x1.5	16	6
SHM3-1220	SHM4-1220	11.987	20.013	20	8	M10x1.5	16	6
SHM3-1225	SHM4-1225	11.987	25.013	20	8	M10x1.5	16	6
SHM3-1230	SHM4-1230	11.987	30.013	20	8	M10x1.5	16	6
SHM3-1235	SHM4-1235	11.987	35.013	20	8	M10x1.5	16	6
SHM3-1240	SHM4-1240	11.987	40.013	20	8	M10x1.5	16	6
SHM3-1260	SHM4-1260	11.987	60.013	20	8	M10x1.5	16	6

Specials made to order

**ondrives.us**

☎ 1-888-260-7466  
📄 516-771-6444

💻 sales@ondrivesus.com  
🌐 www.ondrivesus.com