

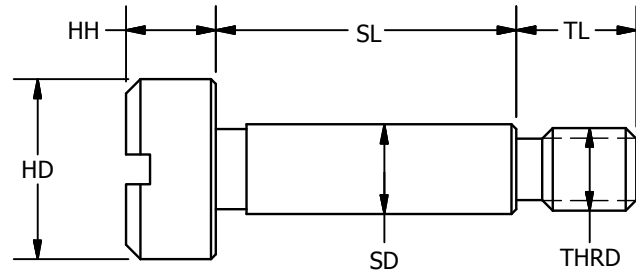
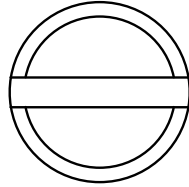
SS3
SS4

FASTENERS

Precision Shoulder Screws

Slotted Head - Inch Sizes

SS3
SS4



303 SS - Rockwell B83
416 SS - Rockwell C26-32

Part Number		-.001 SD	+.002 SL	±.005 HD	±.005 HH	TH	±.005 TL	Slot Width
303SS	416SS							
SS3-0909	SS4-0909	0.0935	0.0943	3/16	3/32	#2-56	1/8	.030-.035
SS3-0912	SS4-0912	0.0935	0.1255	3/16	3/32	#2-56	1/8	.030-.035
SS3-0918	SS4-0918	0.0935	0.1880	3/16	3/32	#2-56	1/8	.030-.035
SS3-0925	SS4-0925	0.0935	0.2505	3/16	3/32	#2-56	1/8	.030-.035
SS3-0931	SS4-0931	0.0935	0.3130	3/16	3/32	#2-56	1/8	.030-.035
SS3-0937	SS4-0937	0.0935	0.3755	3/16	3/32	#2-56	1/8	.030-.035
SS3-0950	SS4-0950	0.0935	0.5005	3/16	3/32	#2-56	1/8	.030-.035
SS3-1212	SS4-1212	0.1245	0.1255	1/4	1/8	#4-40	5/32	.040-.045
SS3-1218	SS4-1218	0.1245	0.1880	1/4	1/8	#4-40	5/32	.040-.045
SS3-1225	SS4-1225	0.1245	0.2505	1/4	1/8	#4-40	5/32	.040-.045
SS3-1231	SS4-1231	0.1245	0.3130	1/4	1/8	#4-40	5/32	.040-.045
SS3-1237	SS4-1237	0.1245	0.3755	1/4	1/8	#4-40	5/32	.040-.045
SS3-1250	SS4-1250	0.1245	0.5005	1/4	1/8	#4-40	5/32	.040-.045
SS3-1262	SS4-1262	0.1245	0.6255	1/4	1/8	#4-40	5/32	.040-.045
SS3-1275	SS4-1275	0.1245	0.7505	1/4	1/8	#4-40	5/32	.040-.045
SS3-12100	SS4-12100	0.1245	1.0005	1/4	1/8	#4-40	5/32	.040-.045
SS3-1512	SS4-1512	0.1557	0.1255	9/32	1/8	#6-32	3/16	.040-.045
SS3-1518	SS4-1518	0.1557	0.1880	9/32	1/8	#6-32	3/16	.040-.045
SS3-1525	SS4-1525	0.1557	0.2505	9/32	1/8	#6-32	3/16	.040-.045
SS3-1531	SS4-1531	0.1557	0.3130	9/32	1/8	#6-32	3/16	.040-.045
SS3-1812	SS4-1812	0.1870	0.1255	5/16	5/32	#8-32	3/16	.040-.045
SS3-1818	SS4-1818	0.1870	0.1880	5/16	5/32	#8-32	3/16	.040-.045
SS3-1825	SS4-1825	0.1870	0.2505	5/16	5/32	#8-32	3/16	.040-.045
SS3-1831	SS4-1831	0.1870	0.3130	5/16	5/32	#8-32	3/16	.040-.045
SS3-1837	SS4-1837	0.1870	0.3755	5/16	5/32	#8-32	3/16	.040-.045
SS3-1843	SS4-1843	0.1870	0.4380	5/16	5/32	#8-32	3/16	.040-.045
SS3-1850	SS4-1850	0.1870	0.5005	5/16	5/32	#8-32	3/16	.040-.045
SS3-1862	SS4-1862	0.1870	0.6255	5/16	5/32	#8-32	3/16	.040-.045
SS3-1875	SS4-1875	0.1870	0.7505	5/16	5/32	#8-32	3/16	.040-.045
SS3-1887	SS4-1887	0.1870	0.8755	5/16	5/32	#8-32	3/16	.040-.045
SS3-18100	SS4-18100	0.1870	1.0005	5/16	5/32	#8-32	3/16	.040-.045
SS3-18125	SS4-18125	0.1870	1.2505	5/16	5/32	#8-32	3/16	.040-.045
SS3-18137	SS4-18137	0.1870	1.3755	5/16	5/32	#8-32	3/16	.040-.045
SS3-18150	SS4-18150	0.1870	1.5005	5/16	5/32	#8-32	3/16	.040-.045
SS3-1843	SS4-1843	0.1870	0.4380	5/16	5/32	#8-32	3/16	.040-.045
SS3-1850	SS4-1850	0.1870	0.5005	5/16	5/32	#8-32	3/16	.040-.045
SS3-1862	SS4-1862	0.1870	0.6255	5/16	5/32	#8-32	3/16	.040-.045
SS3-1875	SS4-1875	0.1870	0.7505	5/16	5/32	#8-32	3/16	.040-.045
SS3-18100	SS4-18100	0.1870	1.0005	5/16	5/32	#8-32	3/16	.040-.045
SS3-18125	SS4-18125	0.1870	1.2505	5/16	5/32	#8-32	3/16	.040-.045
SS3-18150	SS4-18150	0.1870	1.5005	5/16	5/32	#8-32	3/16	.040-.045

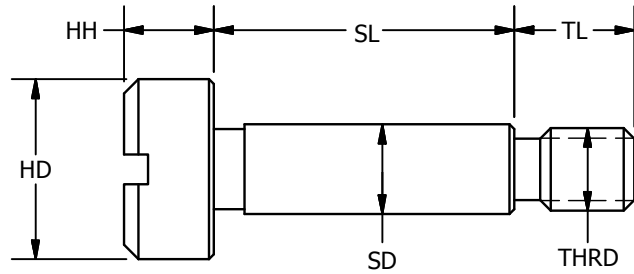
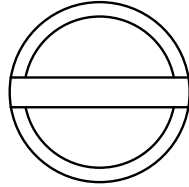
SS3
SS4

FASTENERS

Precision Shoulder Screws

Slotted Head - Inch Sizes

SS3
SS4



303 SS - Rockwell B83
416 SS - Rockwell C26-32

Part Number		-.001 SD	+.002 SL	±.005 HD	±.005 HH	TH	±.005 TL	Slot Width
303SS	416SS							
SS3-2512	SS4-2512	0.2495	0.1255	3/8	3/16	#10-32	1/4	.051-.057
SS3-2518	SS4-2518	0.2495	0.1880	3/8	3/16	#10-32	1/4	.051-.057
SS3-2525	SS4-2525	0.2495	0.2505	3/8	3/16	#10-32	1/4	.051-.057
SS3-2531	SS4-2531	0.2495	0.3130	3/8	3/16	#10-32	1/4	.051-.057
SS3-2537	SS4-2537	0.2495	0.3755	3/8	3/16	#10-32	1/4	.051-.057
SS3-2550	SS4-2550	0.2495	0.5005	3/8	3/16	#10-32	1/4	.051-.057
SS3-2556	SS4-2556	0.2495	0.5630	3/8	3/16	#10-32	1/4	.051-.057
SS3-2562	SS4-2562	0.2495	0.6255	3/8	3/16	#10-32	1/4	.051-.057
SS3-2575	SS4-2575	0.2495	0.7505	3/8	3/16	#10-32	1/4	.051-.057
SS3-2510	SS4-2510	0.2495	1.0005	3/8	3/16	#10-32	1/4	.051-.057
SS3-25125	SS4-25125	0.2495	1.2505	3/8	3/16	#10-32	1/4	.051-.057
SS3-25150	SS4-25150	0.2495	1.5005	3/8	3/16	#10-32	1/4	.051-.057
SS3-3125	SS4-3125	0.3120	0.2505	1/2	7/32	1/4-20	7/16	.057-.064
SS3-3131	SS4-3131	0.3120	0.3130	1/2	7/32	1/4-20	7/16	.057-.064
SS3-3137	SS4-3137	0.3120	0.3755	1/2	7/32	1/4-20	7/16	.057-.064
SS3-3150	SS4-3150	0.3120	0.5005	1/2	7/32	1/4-20	7/16	.057-.064
SS3-3162	SS4-3162	0.3120	0.6255	1/2	7/32	1/4-20	7/16	.057-.064
SS3-3175	SS4-3175	0.3120	0.7505	1/2	7/32	1/4-20	7/16	.057-.064
SS3-3731	SS4-3731	0.3745	0.3130	9/16	1/4	5/16-18	1/2	.060-.070
SS3-3731A	SS4-3731A	0.3745	0.3130	1/2	7/32	1/4-20	7/16	.057-.064
SS3-3737	SS4-3737	0.3745	0.3755	9/16	1/4	5/16-18	1/2	.060-.070
SS3-3737A	SS4-3737A	0.3745	0.3755	1/2	7/32	1/4-20	7/16	.057-.064
SS3-3750	SS4-3750	0.3745	0.5005	9/16	1/4	5/16-18	1/2	.060-.070
SS3-3750A	SS4-3750A	0.3745	0.5005	1/2	7/32	1/4-20	7/16	.057-.064
SS3-3762	SS4-3762	0.3745	0.6255	9/16	1/4	5/16-18	1/2	.060-.070
SS3-3762A	SS4-3762A	0.3745	0.6255	1/2	7/32	1/4-20	7/16	.057-.064
SS3-37100	SS4-37100	0.3745	1.0005	9/16	1/4	5/16-18	1/2	.060-.070
SS3-37125	SS4-37125	0.3745	1.2505	9/16	1/4	5/16-18	1/2	.060-.070
SS3-37150	SS4-37150	0.3745	1.5005	9/16	1/4	5/16-18	1/2	.060-.070
SS3-5031	SS4-5031	0.4995	0.3130	3/4	5/16	3/8-16	5/8	.060-.070
SS3-5050	SS4-5050	0.4995	0.5005	3/4	5/16	3/8-16	5/8	.060-.070
SS3-5062	SS4-5062	0.4995	0.6255	3/4	5/16	3/8-16	5/8	.060-.070
SS3-5075	SS4-5075	0.4995	0.7505	3/4	5/16	3/8-16	5/8	.060-.070
SS3-50100	SS4-50100	0.4995	1.0005	3/4	5/16	3/8-16	5/8	.060-.070

*Specials made to order

Slot Depth = 1/3 the Width of the Head