

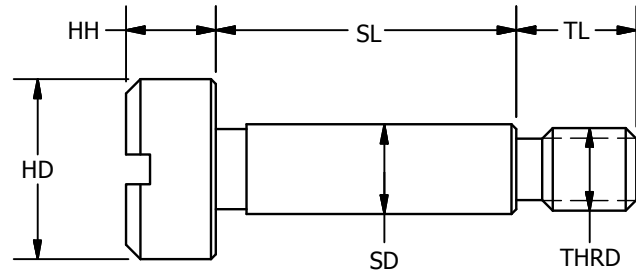
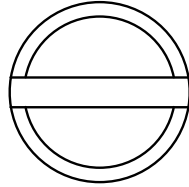
SSM3
SSM4

FASTENERS

Precision Shoulder Screws

Slotted Head - Metric Sizes

SSM3
SSM4



303 SS - Rockwell B83
416 SS - Rockwell C26-32

Part Number		-.025 SD	+.050 SL	±.127 HD	±.127 HH	TH	±.127 TL	Slot Width
303SS	416SS							
SSM3-43	SSM4-43	3.987	3.013	6	3	M3x0.5	4	1.14-1.27
SSM3-44	SSM4-44	3.987	4.013	6	3	M3x0.5	4	1.14-1.27
SSM3-45	SSM4-45	3.987	5.013	6	3	M3x0.5	4	1.14-1.27
SSM3-46	SSM4-46	3.987	6.013	6	3	M3x0.5	4	1.14-1.27
SSM3-47	SSM4-47	3.987	7.013	6	3	M3x0.5	4	1.14-1.27
SSM3-48	SSM4-48	3.987	8.013	6	3	M3x0.5	4	1.14-1.27
SSM3-410	SSM4-410	3.987	10.013	6	3	M3x0.5	4	1.14-1.27
SSM3-412	SSM4-412	3.987	12.013	6	3	M3x0.5	4	1.14-1.27
SSM3-416	SSM4-416	3.987	16.013	6	3	M3x0.5	4	1.14-1.27
SSM3-420	SSM4-420	3.987	20.013	6	3	M3x0.5	4	1.14-1.27
SSM3-425	SSM4-425	3.987	25.013	6	3	M3x0.5	4	1.14-1.27
SSM3-430	SSM4-430	3.987	30.013	6	3	M3x0.5	4	1.14-1.27
SSM3-54	SSM4-54	4.987	4.013	8	4	M4x0.7	5	1.27-1.45
SSM3-55	SSM4-55	4.987	5.013	8	4	M4x0.7	5	1.27-1.45
SSM3-56	SSM4-56	4.987	6.013	8	4	M4x0.7	5	1.27-1.45
SSM3-57	SSM4-57	4.987	7.013	8	4	M4x0.7	5	1.27-1.45
SSM3-58	SSM4-58	4.987	8.013	8	4	M4x0.7	5	1.27-1.45
SSM3-59	SSM4-59	4.987	9.013	8	4	M4x0.7	5	1.27-1.45
SSM3-510	SSM4-510	4.987	10.013	8	4	M4x0.7	5	1.27-1.45
SSM3-512	SSM4-512	4.987	12.013	8	4	M4x0.7	5	1.27-1.45
SSM3-514	SSM4-514	4.987	14.013	8	4	M4x0.7	5	1.27-1.45
SSM3-516	SSM4-516	4.987	16.013	8	4	M4x0.7	5	1.27-1.45
SSM3-520	SSM4-520	4.987	20.013	8	4	M4x0.7	5	1.27-1.45
SSM3-521	SSM4-521	4.987	21.013	8	4	M4x0.7	5	1.27-1.45
SSM3-525	SSM4-525	4.987	25.013	8	4	M4x0.7	5	1.27-1.45
SSM3-526	SSM4-526	4.987	26.013	8	4	M4x0.7	5	1.27-1.45
SSM3-530	SSM4-530	4.987	30.013	8	4	M4x0.7	5	1.27-1.45
SSM3-64	SSM4-64	5.987	4.013	10	5	M5x0.8	6	1.27-1.45
SSM3-65	SSM4-65	5.987	5.013	10	5	M5x0.8	6	1.27-1.45
SSM3-66	SSM4-66	5.987	6.013	10	5	M5x0.8	6	1.27-1.45
SSM3-68	SSM4-68	5.987	8.013	10	5	M5x0.8	6	1.27-1.45
SSM3-69	SSM4-69	5.987	9.013	10	5	M5x0.8	6	1.27-1.45
SSM3-610	SSM4-610	5.987	10.013	10	5	M5x0.8	6	1.27-1.45
SSM3-612	SSM4-612	5.987	12.013	10	5	M5x0.8	6	1.27-1.45
SSM3-614	SSM4-614	5.987	14.013	10	5	M5x0.8	6	1.27-1.45
SSM3-615	SSM4-615	5.987	15.013	10	5	M5x0.8	6	1.27-1.45
SSM3-616	SSM4-616	5.987	16.013	10	5	M5x0.8	6	1.27-1.45
SSM3-620	SSM4-620	5.987	20.013	10	5	M5x0.8	6	1.27-1.45
SSM3-625	SSM4-625	5.987	25.013	10	5	M5x0.8	6	1.27-1.45
SSM3-630	SSM4-630	5.987	30.013	10	5	M5x0.8	6	1.27-1.45

Specials made to order

Slot Depth = 1/3 the Width of the Head

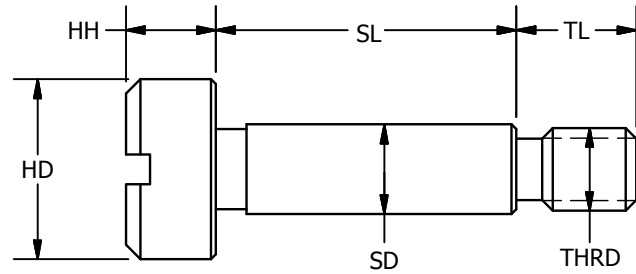
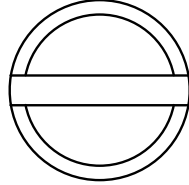
SSM3
SSM4

FASTENERS

Precision Shoulder Screws

Slotted Head - Metric Sizes

SSM3
SSM4



303 SS - Rockwell B83
416 SS - Rockwell C26-32

Part Number		-.025 SD	+.050 SL	±.127 HD	±.127 HH	TH	±.127 TL	Slot Width
303SS	416SS							
SSM3-86	SSM4-86	7.987	6.013	12	6	M6x1	11	1.52-1.83
SSM3-88	SSM4-88	7.987	8.013	12	6	M6x1	11	1.52-1.83
SSM3-810	SSM4-810	7.987	10.013	12	6	M6x1	11	1.52-1.83
SSM3-812	SSM4-812	7.987	12.013	12	6	M6x1	11	1.52-1.83
SSM3-814	SSM4-814	7.987	14.013	12	6	M6x1	11	1.52-1.83
SSM3-816	SSM4-816	7.987	16.013	12	6	M6x1	11	1.52-1.83
SSM3-820	SSM4-820	7.987	20.013	12	6	M6x1	11	1.52-1.83
SSM3-825	SSM4-825	7.987	25.013	12	6	M6x1	11	1.52-1.83
SSM3-830	SSM4-830	7.987	30.013	12	6	M6x1	11	1.52-1.83
SSM3-840	SSM4-840	7.987	40.013	12	6	M6x1	11	1.52-1.83
SSM3-860	SSM4-860	7.987	60.013	12	6	M6x1	11	1.52-1.83
SSM3-104A	SSM4-104A	9.987	4.013	12	6	M6x1	11	1.52-1.83
SSM3-105	SSM4-105	9.987	5.013	14	7	M8x1.25	12	1.78-1.91
SSM3-108	SSM4-108	9.987	8.013	14	7	M8x1.25	12	1.78-1.91
SSM3-108A	SSM4-108A	9.987	8.013	12	6	M6x1	11	1.52-1.83
SSM3-109	SSM4-109	9.987	9.013	14	7	M8x1.25	12	1.78-1.91
SSM3-1010	SSM4-1010	9.987	10.013	14	7	M8x1.25	12	1.78-1.91
SSM3-1010A	SSM4-1010A	9.987	10.013	12	6	M6x1	11	1.52-1.83
SSM3-1012	SSM4-1012	9.987	12.013	14	7	M8x1.25	12	1.78-1.91
SSM3-1012A	SSM4-1012A	9.987	12.013	12	6	M6x1	11	1.52-1.83
SSM3-1013	SSM4-1013	9.987	13.013	14	7	M8x1.25	12	1.78-1.91
SSM3-1016	SSM4-1016	9.987	16.013	14	7	M8x1.25	12	1.78-1.91
SSM3-1016A	SSM4-1016A	9.987	16.013	12	6	M6x1	11	1.52-1.83
SSM3-1020	SSM4-1020	9.987	20.013	14	7	M8x1.25	12	1.78-1.91
SSM3-1025	SSM4-1025	9.987	25.013	14	7	M8x1.25	12	1.78-1.91
SSM3-1030	SSM4-1030	9.987	30.013	14	7	M8x1.25	12	1.78-1.91
SSM3-1040	SSM4-1040	9.987	40.013	14	7	M8x1.25	12	1.78-1.91
SSM3-1045	SSM4-1045	9.987	45.013	14	7	M8x1.25	12	1.78-1.91
SSM3-1060	SSM4-1060	9.987	60.013	14	7	M8x1.25	12	1.78-1.91
SSM3-1080	SSM4-1080	9.987	80.013	14	7	M8x1.25	12	1.78-1.91
SSM3-1090	SSM4-1090	9.987	90.013	14	7	M8x1.25	12	1.78-1.91
SSM3-1210	SSM4-1210	11.987	10.013	20	8	M10x1.5	16	2.03-2.29
SSM3-1212	SSM4-1212	11.987	12.013	20	8	M10x1.5	16	2.03-2.29
SSM3-1216	SSM4-1216	11.987	16.013	20	8	M10x1.5	16	2.03-2.29
SSM3-1217	SSM4-1217	11.987	17.013	20	8	M10x1.5	16	2.03-2.29
SSM3-1220	SSM4-1220	11.987	20.013	20	8	M10x1.5	16	2.03-2.29
SSM3-1225	SSM4-1225	11.987	25.013	20	8	M10x1.5	16	2.03-2.29
SSM3-1230	SSM4-1230	11.987	30.013	20	8	M10x1.5	16	2.03-2.29
SSM3-1235	SSM4-1235	11.987	35.013	20	8	M10x1.5	16	2.03-2.29
SSM3-1240	SSM4-1240	11.987	40.013	20	8	M10x1.5	16	2.03-2.29
SSM3-1260	SSM4-1260	11.987	60.013	20	8	M10x1.5	16	2.03-2.29

Specials made to order

Slot Depth = 1/3 the Width of the Head