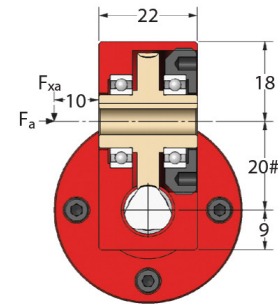
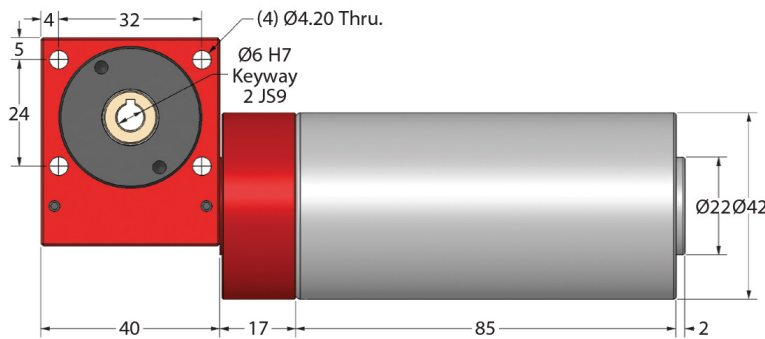
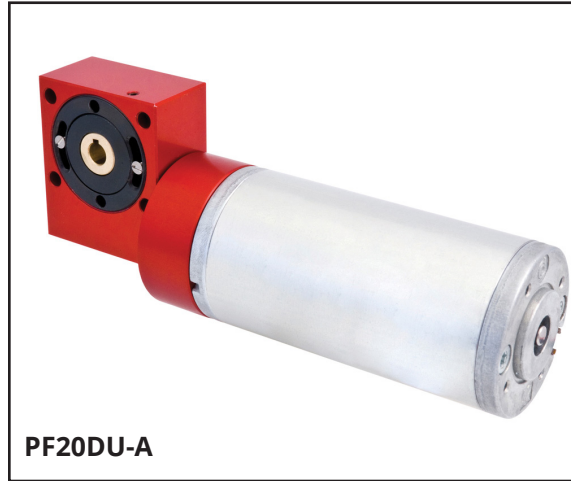
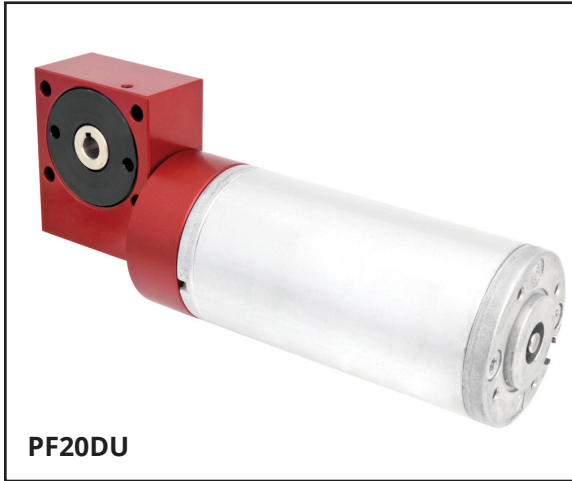


GEARBOXES

PF20DU

Precision Worm Gear Reducers Fitted with 24V DC Motor : 0.5 - 2.1 Nm

PF20DU



PF20DUA version (low backlash) output is on eccentric so centres will vary.

Part Number		Ratio	Rpm at 12V DC	Nominal Output Rpm	Efficiency at 1000 Rpm	Nm Output at 1550 Rpm Input	DC Motor
Standard $\leq 30'$	Low Backlash $\leq 8'$						
PF20DU-10	PF20DU-10A	10:1	1,550	155.0	86%	0.50	DUN42x40-24
PF20DU-12	PF20DU-12A	12:1	1,550	129.0	85%	0.70	DUN42x40-24
PF20DU-15	PF20DU-15A	15:1	1,550	103.0	84%	0.80	DUN42x40-24
PF20DU-20	PF20DU-20A	20:1	1,550	77.5	78%	1.10	DUN42x40-24
PF20DU-30	PF20DU-30A	30:1	1,550	51.0	71%	1.70	DUN42x40-24
PF20DU-60	PF20DU-60A	60:1	1,550	25.0	60%	2.10	DUN42x40-24
PF20DU-120	PF20DU-120A	120:1	1,550	13.0	32%	1.25	DUN42x40-24
PF20DU-SP	PF20DU-SPA	5:1 - 120:1	1,550	Special Ratios: Replace SP with required ratio			DUN42x40-24

Motor Part Number	Voltage (V)	No Load Speed (Rpm)	No Load Current (A)	Nominal Current (A)	Max. Efficiency	Nominal Torque (Ncm)	Nominal Speed (Rpm)	Moment of Inertia (gcm ²)
DUN42x40-24	24	3,800	0.175	1.22	63%	5.7	3,100	110

Other input speeds available. For details of PF20 gear reducer or to purchase separately, please contact us.

24V DC Motor

Commutation: Graphite. Number of Sectors: 12. Brushes: Rotary. Magnets: Ferrite.
 Axial Backlash: <0.15 mm. Radial Backlash: <0.15 mm.
 Max. Axial Load: 30 N Max. Radial Load at 20mm: 60 N
 Max. Shaft Push Pressure: 200 N. Operating Temperature Range: -20°C to +85°C.
 Max. Housing Temperature: +85°C. Mass: 0.49 kg. Starting Voltage: 1 V.

Motor performance data is based upon an operating temperature of +25°C. Testing in your application is necessary. You will need to assess duty cycles and confirm reducer suitability with your own calculations. All figures listed are to be used for guidance only. Tapped holes on input flange are not relative in position to the reducer body and will alter from box to box. This also applies to the motor leads. However, we can machine the tapped holes after assembly so they are relative in position to the reducer body. This will affect delivery.

ondrives.us

1-888-260-7466
516-771-6444

sales@ondrivesus.com
www.ondrivesus.com