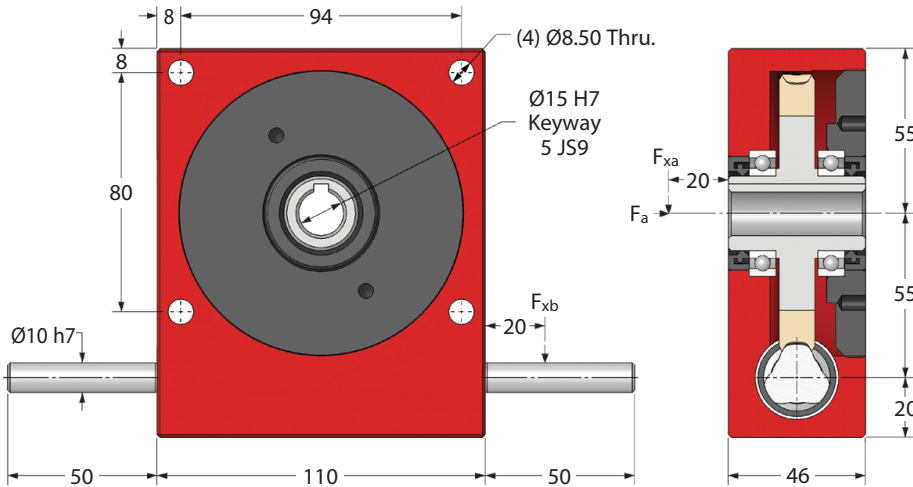
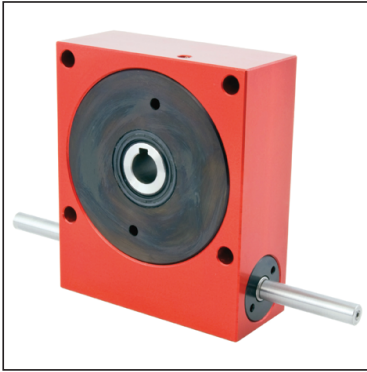


P55**e-cad**
Drawings
Available

GEARBOXES

Precision Worm Gear Reducers

Shaft Input 13.4 – 57 Nm **5:1 - 120:1**

Standard	Part Number	Part Number	Part Number	Ratio	Efficiency at 1000 Rpm	Reflected Inertia at Input (kg.m ²)	Self Locking Output
≤30'	Low Backlash ≤8'	Red. Backlash ≤4'					
P55-10	P55-10A	P55-10AR		10:1	89%	1.35 x 10 ⁻⁵	✗
P55-12	P55-12A	P55-12AR		12:1	88%	1.13 x 10 ⁻⁵	✗
P55-15	P55-15A	P55-15AR		15:1	86%	9.81 x 10 ⁻⁶	✗
P55-20	P55-20A	P55-20AR		20:1	84%	8.63 x 10 ⁻⁶	✗
P55-30	P55-30A	P55-30AR		30:1	78%	7.79 x 10 ⁻⁶	✗
P55-60	P55-60A	P55-60AR		60:1	69%	7.23 x 10 ⁻⁶	✓
P55-120	P55-120A	P55-120AR		120:1	47%	7.04 x 10 ⁻⁶	✓
P55-SP	P55-SPA	P55-SPAR		5:1-120:1	Special Ratios : Replace SP with required ratio		

Accessories**P55-X**

Single Output Shafts

P55-DX

Double Output Shafts

KK5-30

Output Key

Weight: 2.40 kg. **Greased for Life:** Shell Gadus S5 V42P 2.5.**F_{xb} at 1000 Rpm:** 14 kg. **F_{xa} at 1000 Rpm:** 60 kg. **F_a at 1000 Rpm:** 40 kg.**Input Shaft Modifications:**

Smaller Diameter, Mill Keyway/Flat, Shorten Shaft Length.

Circlip Groove, Pin Hole.

Testing in your application is necessary.

You will need to assess duty cycles and confirm suitability with your own calculations.

All figures listed are to be used for guidance only.

Output Torque Nm

Rpm	Reduction Ratio						
Input	10:1	12:1	15:1	20:1	30:1	60:1	120:1
3000	13.4	14.0	14.8	16.2	17.6	20.4	18.0
2000	16.2	16.9	18.3	19.1	20.4	23.9	20.0
1000	21.1	22.5	23.2	24.6	25.3	28.8	25.0
500	27.4	28.1	28.8	30.2	31.6	35.1	30.0
200	34.4	35.1	36.5	37.9	39.3	42.1	36.0
100	40.0	41.4	42.1	42.8	44.9	46.3	38.0
50	45.6	46.3	47.7	48.4	49.8	50.5	38.0
10	56.8	56.8	56.8	57.0	57.0	57.0	38.0