

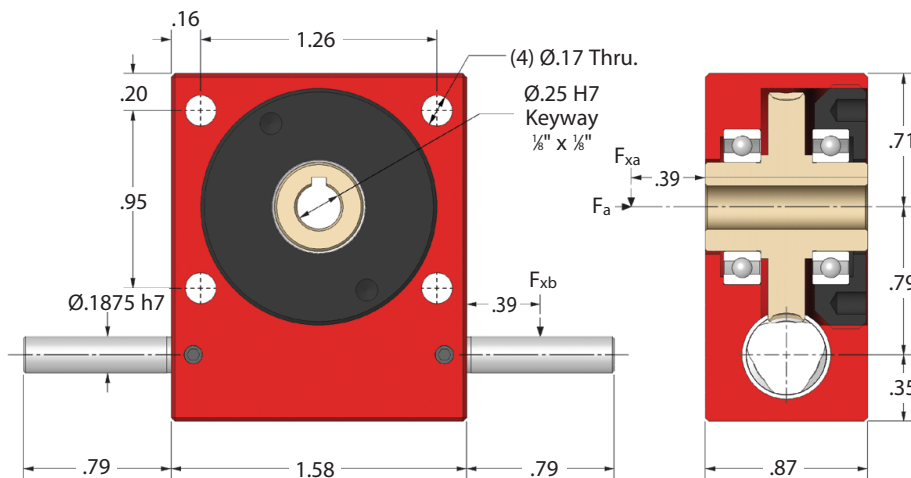
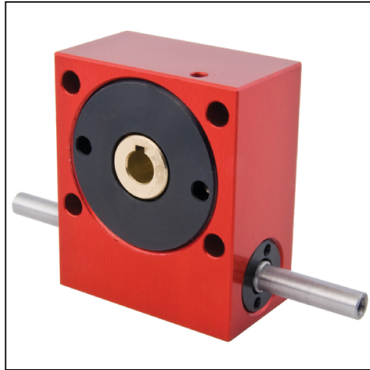
GEARBOXES

Precision Worm Gear Reducers

Shaft Input 11.1 – 44.3 lbf.in **5:1 - 120:1**

e-cad
Drawings
Available

PA20



Standard ≤30'	Part Number Low Backlash ≤8'	Red. Backlash ≤4'	Ratio	Efficiency at 1000 Rpm	Reflected Inertia at Input (lb.in ²)	Self Locking Output
PA20-10	PA20-10A	PA20-10AR	10:1	86%	6.94 x 10 ⁻⁴	✘
PA20-12	PA20-12A	PA20-12AR	12:1	85%	6.60 x 10 ⁻⁴	✘
PA20-15	PA20-15A	PA20-15AR	15:1	84%	6.32 x 10 ⁻⁴	✘
PA20-20	PA20-20A	PA20-20AR	20:1	78%	6.08 x 10 ⁻⁴	✘
PA20-30	PA20-30A	PA20-30AR	30:1	71%	5.95 x 10 ⁻⁴	✘
PA20-60	PA20-60A	PA20-60AR	60:1	60%	5.84 x 10 ⁻⁴	✓
PA20-120	PA20-120A	PA20-120AR	120:1	32%	5.13 x 10 ⁻⁴	✓
PA20-SP	PA20-SPA	PA20-SPAR	5:1-120:1	Special Ratios : Replace SP with required ratio		

Weight: 0.40 lb. Greased for Life: Shell Gadus S5 V42P 2.5.
F_{xb} at 1000 Rpm: 13.23 lb. F_{xa} at 1000 Rpm: 26.46 lb. F_a at 1000 Rpm: 11.02 lb.

Input Shaft Modifications:

Smaller Diameter, Mill Keyway/Flat, Shorten Shaft Length.
Circlip Groove, Pin Hole.

Testing in your application is necessary.
You will need to assess duty cycles and confirm suitability with your own calculations.
All figures listed are to be used for guidance only.

Output Torque lbf.in

Rpm Input	Reduction Ratio						
	10:1	12:1	15:1	20:1	30:1	60:1	120:1
3000	12.4	13.3	14.2	15.0	16.8	18.6	11.1
2000	15.0	15.0	15.9	15.9	18.6	21.2	12.6
1000	18.6	20.4	20.4	22.1	23.9	25.7	15.0
500	23.9	23.9	24.8	25.7	28.3	31.0	17.2
200	30.1	31.0	31.0	32.7	34.5	36.3	20.1
100	34.5	34.5	36.3	37.2	38.1	39.8	22.6
50	38.9	39.8	39.8	40.7	41.6	42.5	24.1
10	42.5	42.5	43.4	43.4	44.3	44.3	24.1

sales@ondrives.us
www.ondrives.us

516-771-6777
516-771-6444

ondrives .US Corp.