

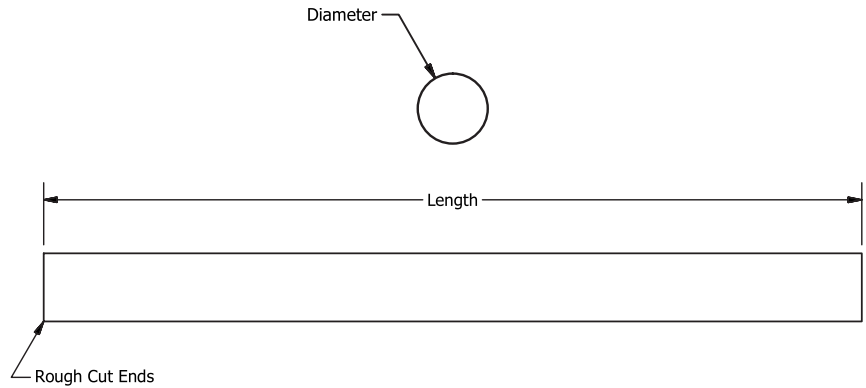
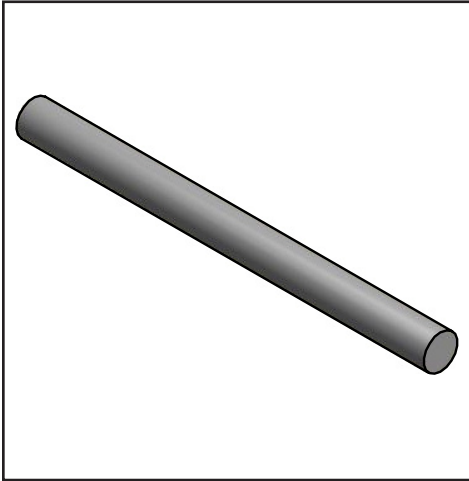
GA

SHAFTS

GA

12L14 Precision Ground Shafting

Inch - 1/8" to 1-1/4" Diameters
Rough Cut Ends



Toleranced for use with Ball Bearings

Inch Shafts			
Part Number	Nominal Diameter	Diameter	± .125" Length
GA1247-350SC	1/8"	0.1247	35"
GA1872-350SC	3/16"	0.1872	35"
GA2497-350SC	1/4"	0.2497	35"
GA3122-350SC	5/16"	0.3122	35"
GA3747-350SC	3/8"	0.3747	35"
GA4997-350SC	1/2"	0.4997	35"
GA6247-350SC	5/8"	0.6247	35"
GA7497-350SC	3/4"	0.7497	35"
GA9997-350SC	1"	0.9997	35"
GA12497-350SC	1-1/4"	1.2497	35"

Specifications:

Material: 12L14 Steel

Ideal use for:

Ball bearings, pulleys, couplings, gears, any rotating component

From stock delivery

Special sizes and other materials are available, please ask
Customizing is available: grooves, journals, flats, drill holes, thread + tapped holes, chamfers, special diameters, special lengths