

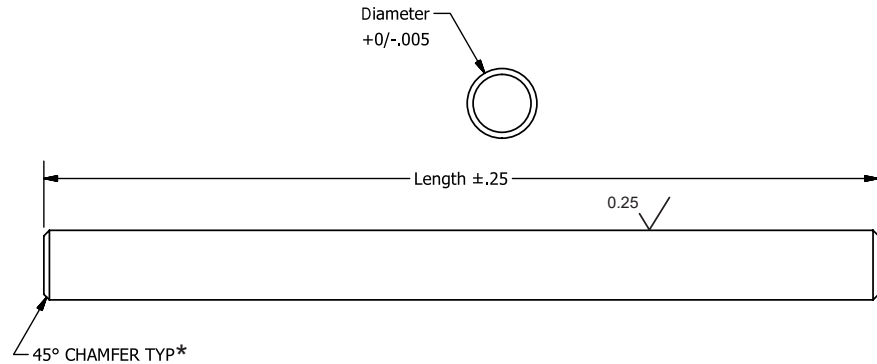
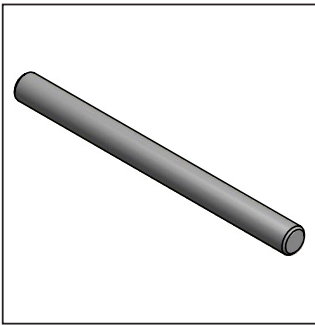
GPM

# SHAFTS

GPM

## 17-PH Stainless Precision Ground Shafting

1mm to 10mm Diameters - 20mm to 900mm Lengths



Part Number	Ref.	+0/-0.005 Diameter	+/- 0.25 Length
GPM1000-200	1mm	1.000	200mm
GPM1000-300	1mm	1.000	300mm
GPM1500-200	1.5mm	1.500	200mm
GPM1500-300	1.5mm	1.500	300mm
GPM1500-600	1.5mm	1.500	600mm
GPM2000-200	2mm	2.000	200mm
GPM2000-300	2mm	2.000	300mm
GPM2000-600	2mm	2.000	600mm
GPM2000-900	2mm	2.000	900mm
GPM2500-200	2.5mm	2.500	200mm
GPM2500-300	2.5mm	2.500	300mm
GPM2500-600	2.5mm	2.500	600mm
GPM2500-900	2.5mm	2.500	900mm
GPM3000-200	3mm	3.000	200mm
GPM3000-300	3mm	3.000	300mm
GPM3000-600	3mm	3.000	600mm
GPM3000-900	3mm	3.000	900mm
GPM4000-200	4mm	4.000	200mm
GPM4000-300	4mm	4.000	300mm
GPM4000-600	4mm	4.000	600mm
GPM4000-900	4mm	4.000	900mm

Part Number	Ref.	+0/-0.005 Diameter	+/- 0.25 Length
GPM5000-300	5mm	5.000	300mm
GPM5000-600	5mm	5.000	600mm
GPM5000-900	5mm	5.000	900mm
GPM6000-300	6mm	6.000	300mm
GPM6000-600	6mm	6.000	600mm
GPM6000-900	6mm	6.000	900mm
GPM7000-300	7mm	7.000	300mm
GPM7000-600	7mm	7.000	600mm
GPM7000-900	7mm	7.000	900mm
GPM8000-300	8mm	8.000	300mm
GPM8000-600	8mm	8.000	600mm
GPM8000-900	8mm	8.000	900mm
GPM9000-300	9mm	9.000	300mm
GPM9000-600	9mm	9.000	600mm
GPM9000-900	9mm	9.000	900mm
GPM10000-300	10mm	10.000	300mm
GPM10000-600	10mm	10.000	600mm
GPM10000-900	10mm	10.000	900mm

**Precision ground 17-4PH Stainless Steel**  
**Diameters from 1mm to 10mm**  
**Lengths from 200mm to 900mm**

**Straightness:**

Best efforts below 3mm Diameter  
 3mm to 6mm" Diameters: 0.0004mm/mm  
 Over 6mm Diameter: 0.0006mm/mm

**\*45° Chamfers:**

3mm Diameter and larger.  
 Break edge below 3mm Diameter

**From Stock Delivery**

**Surface Finish: 25µm**  
**Hardened to RC40-47**

**Other materials available from stock**

303, 316, 12L14 Steel

**Special sizes and other materials are available, Please ask.**

**Customizing:**

grooves, journals, flats, drill holes,  
 key slots, threaded ends, tapped ends,  
 custom diameters or lengths