

GSM

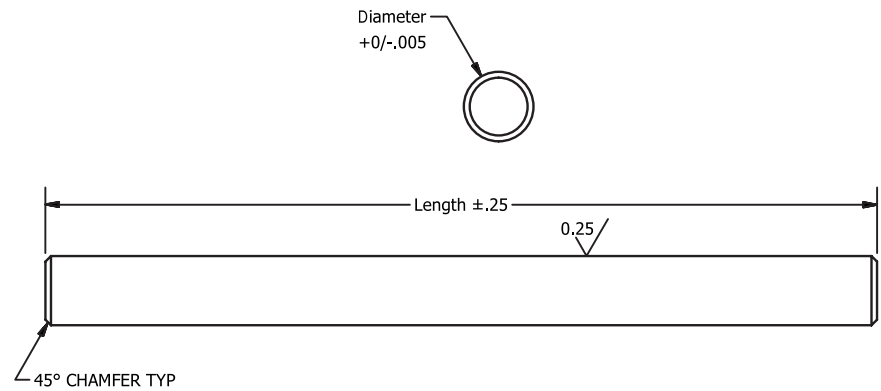
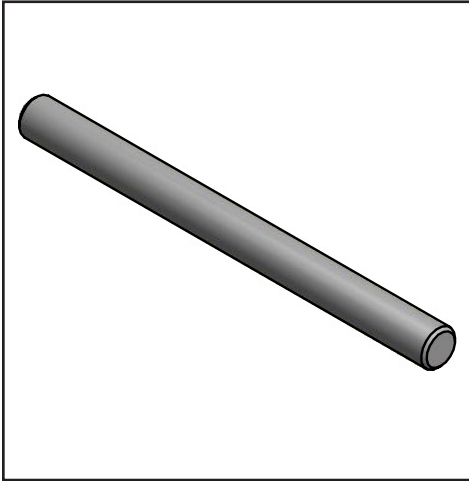
SHAFTS

Ground Shafting

303 Stainless Steel Metric

1mm to 10mm Diameters 200mm to 900mm Length

GSM



| Part Number | Ref. | +0.000 / -0.005 Diameter | +/- 0.25 Length |
|-------------|-------|--------------------------|-----------------|
| GSM1000-200 | 1mm | 1.000 | 200mm |
| GSM1000-300 | 1mm | 1.000 | 300mm |
| GSM1000-400 | 1mm | 1.000 | 400mm |
| GSM1000-600 | 1mm | 1.000 | 600mm |
| GSM1000-800 | 1mm | 1.000 | 800mm |
| GSM1000-900 | 1mm | 1.000 | 900mm |
| GSM1500-200 | 1,5mm | 1.500 | 200mm |
| GSM1500-300 | 1,5mm | 1.500 | 300mm |
| GSM1500-400 | 1,5mm | 1.500 | 400mm |
| GSM1500-600 | 1,5mm | 1.500 | 600mm |
| GSM1500-800 | 1,5mm | 1.500 | 800mm |
| GSM1500-900 | 1,5mm | 1.500 | 900mm |
| GSM2000-200 | 2mm | 2.000 | 200mm |
| GSM2000-300 | 2mm | 2.000 | 300mm |
| GSM2000-400 | 2mm | 2.000 | 400mm |
| GSM2000-600 | 2mm | 2.000 | 600mm |
| GSM2000-800 | 2mm | 2.000 | 800mm |
| GSM2000-900 | 2mm | 2.000 | 900mm |

| Part Number | Ref. | +0.000 / -0.005 Diameter | +/- 0.25 Length |
|-------------|-------|--------------------------|-----------------|
| GSM2500-200 | 2,5mm | 2.500 | 200mm |
| GSM2500-300 | 2,5mm | 2.500 | 300mm |
| GSM2500-400 | 2,5mm | 2.500 | 400mm |
| GSM2500-600 | 2,5mm | 2.500 | 600mm |
| GSM2500-800 | 2,5mm | 2.500 | 800mm |
| GSM2500-900 | 2,5mm | 2.500 | 900mm |
| GSM3000-200 | 3mm | 3.000 | 200mm |
| GSM3000-300 | 3mm | 3.000 | 300mm |
| GSM3000-400 | 3mm | 3.000 | 400mm |
| GSM3000-600 | 3mm | 3.000 | 600mm |
| GSM3000-800 | 3mm | 3.000 | 800mm |
| GSM3000-900 | 3mm | 3.000 | 900mm |
| GSM4000-200 | 4mm | 4.000 | 200mm |
| GSM4000-300 | 4mm | 4.000 | 300mm |
| GSM4000-400 | 4mm | 4.000 | 400mm |
| GSM4000-600 | 4mm | 4.000 | 600mm |
| GSM4000-800 | 4mm | 4.000 | 800mm |
| GSM4000-900 | 4mm | 4.000 | 900mm |

Specifications:

Material: 303 Stainless Steel

Straightness:

up to 6mm Diameter: .0004mm/mm

over 6mm Diameter: .0006mm/mm

Surface Finish: 0.25µin

Hardness: HRB83

***Chamfer:** 45° chamfer both ends on diameters 2.5mm and over; rough cut on diameters under 2.5mm

From stock delivery

Other materials available from stock: 316, 17-4 PH, 12L14

Special sizes and other materials are available, please ask

Customizing: grooves, journals, flats, drill holes, thread, tapped holes, chamfers, special diameters, special lengths

GSM

SHAFTS

Ground Shafting

GSM

303 Stainless Steel Metric
1mm to 10mm Diameters 200mm to 900mm Length

| Part Number | Ref. | +0.00 / -.005 Diameter | +/- .025 Length |
|-------------|------|------------------------------|-----------------------|
| GSM5000-200 | 5mm | 5.000 | 200mm |
| GSM5000-300 | 5mm | 5.000 | 300mm |
| GSM5000-400 | 5mm | 5.000 | 400mm |
| GSM5000-600 | 5mm | 5.000 | 600mm |
| GSM5000-800 | 5mm | 5.000 | 800mm |
| GSM5000-900 | 5mm | 5.000 | 900mm |
| GSM6000-200 | 6mm | 6.000 | 200mm |
| GSM6000-300 | 6mm | 6.000 | 300mm |
| GSM6000-400 | 6mm | 6.000 | 400mm |
| GSM6000-600 | 6mm | 6.000 | 600mm |
| GSM6000-800 | 6mm | 6.000 | 800mm |
| GSM6000-900 | 6mm | 6.000 | 900mm |
| GSM7000-200 | 7mm | 7.000 | 200mm |
| GSM7000-300 | 7mm | 7.000 | 300mm |
| GSM7000-400 | 7mm | 7.000 | 400mm |
| GSM7000-600 | 7mm | 7.000 | 600mm |
| GSM7000-800 | 7mm | 7.000 | 800mm |
| GSM7000-900 | 7mm | 7.000 | 900mm |

| Part Number | Ref. | +0.00 / -.005 Diameter | +/- 0.25 Length |
|--------------|------|------------------------------|-----------------------|
| GSM8000-200 | 8mm | 8.000 | 200mm |
| GSM8000-300 | 8mm | 8.000 | 300mm |
| GSM8000-400 | 8mm | 8.000 | 400mm |
| GSM8000-600 | 8mm | 8.000 | 600mm |
| GSM8000-800 | 8mm | 8.000 | 800mm |
| GSM8000-900 | 8mm | 8.000 | 900mm |
| GSM9000-200 | 9mm | 9.000 | 200mm |
| GSM9000-300 | 9mm | 9.000 | 300mm |
| GSM9000-400 | 9mm | 9.000 | 400mm |
| GSM9000-600 | 9mm | 9.000 | 600mm |
| GSM9000-800 | 9mm | 9.000 | 800mm |
| GSM9000-900 | 9mm | 9.000 | 900mm |
| GSM10000-200 | 10mm | 10.000 | 200mm |
| GSM10000-300 | 10mm | 10.000 | 300mm |
| GSM10000-400 | 10mm | 10.000 | 400mm |
| GSM10000-600 | 10mm | 10.000 | 600mm |
| GSM10000-800 | 10mm | 10.000 | 800mm |
| GSM10000-900 | 10mm | 10.000 | 900mm |

Specifications:**Material:** 303 Stainless Steel**Straightness:**

up to 6mm Diameter: .0004mm/mm
over 6mm Diameter: .0006mm/mm

Surface Finish: 0.25µin**Hardness:** HRB83

***Chamfer:** 45° chamfer both ends on diameters 2.5mm and over; rough cut on diameters under 2.5mm